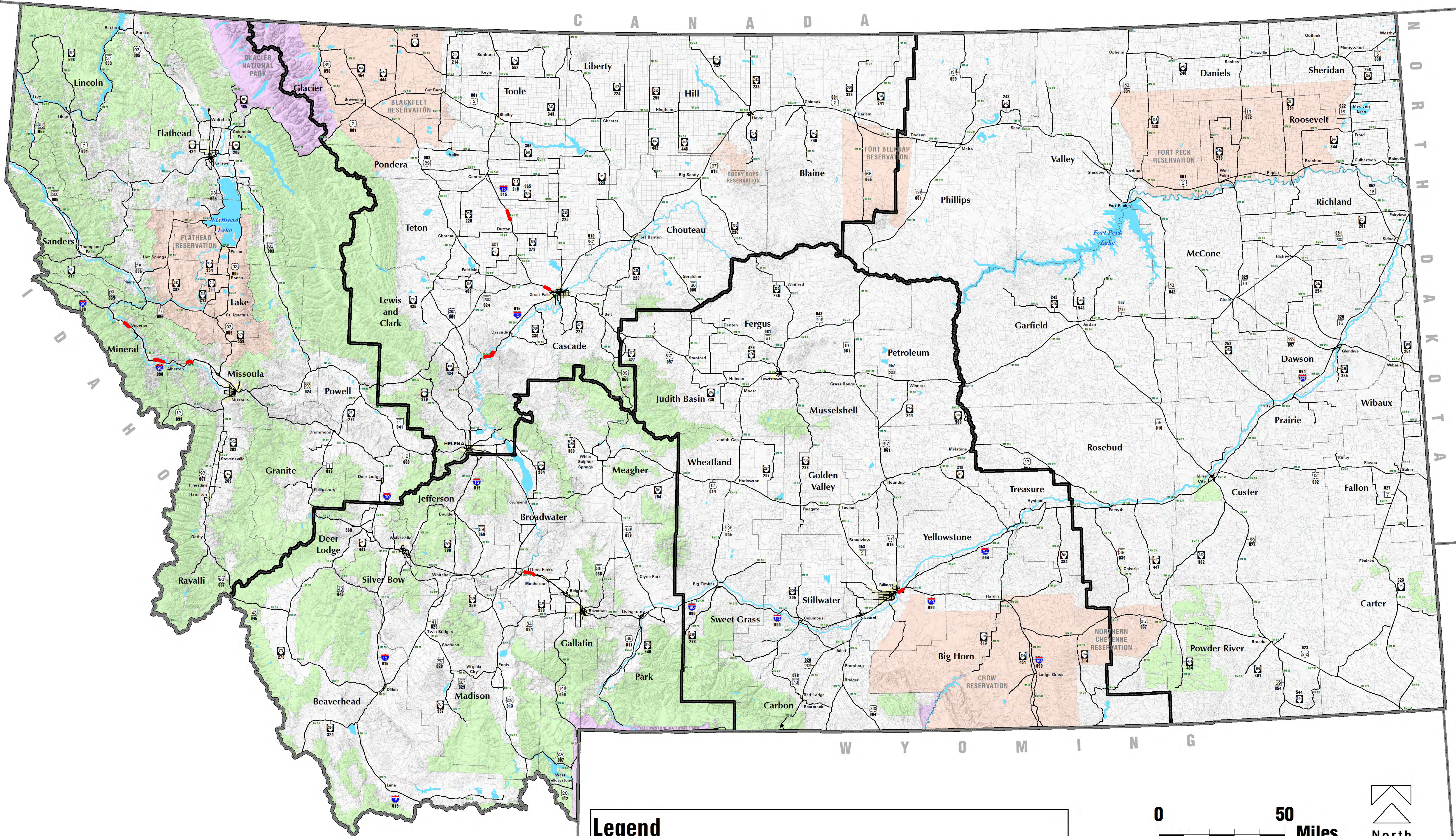


# Roadway Departure Safety Implementation Plan

## BRIDGE RAIL CRASH PATTERNS



Map prepared May, 2014 by Felsburg Holt & Ullevig in coordination with DiExSys. Bridge rail crash patterns were determined through modeling produced/revised in May, 2014 by DiExSys™. Map produced in ESRI ArcMap 10.2 ©. Land jurisdiction and highway information provided by MDT Hillshade provided by USGS. Mapped using lookup table (provided by MDT) for conversion between reference marker (RM) and true distance (DCMI) linear referencing systems. Map reduced from 34"x44".

**Legend**

- Bridge Rail Crash Patterns
- County Boundaries
- Reservations
- Forest Service Lands
- National Parks
- MDT Districts

