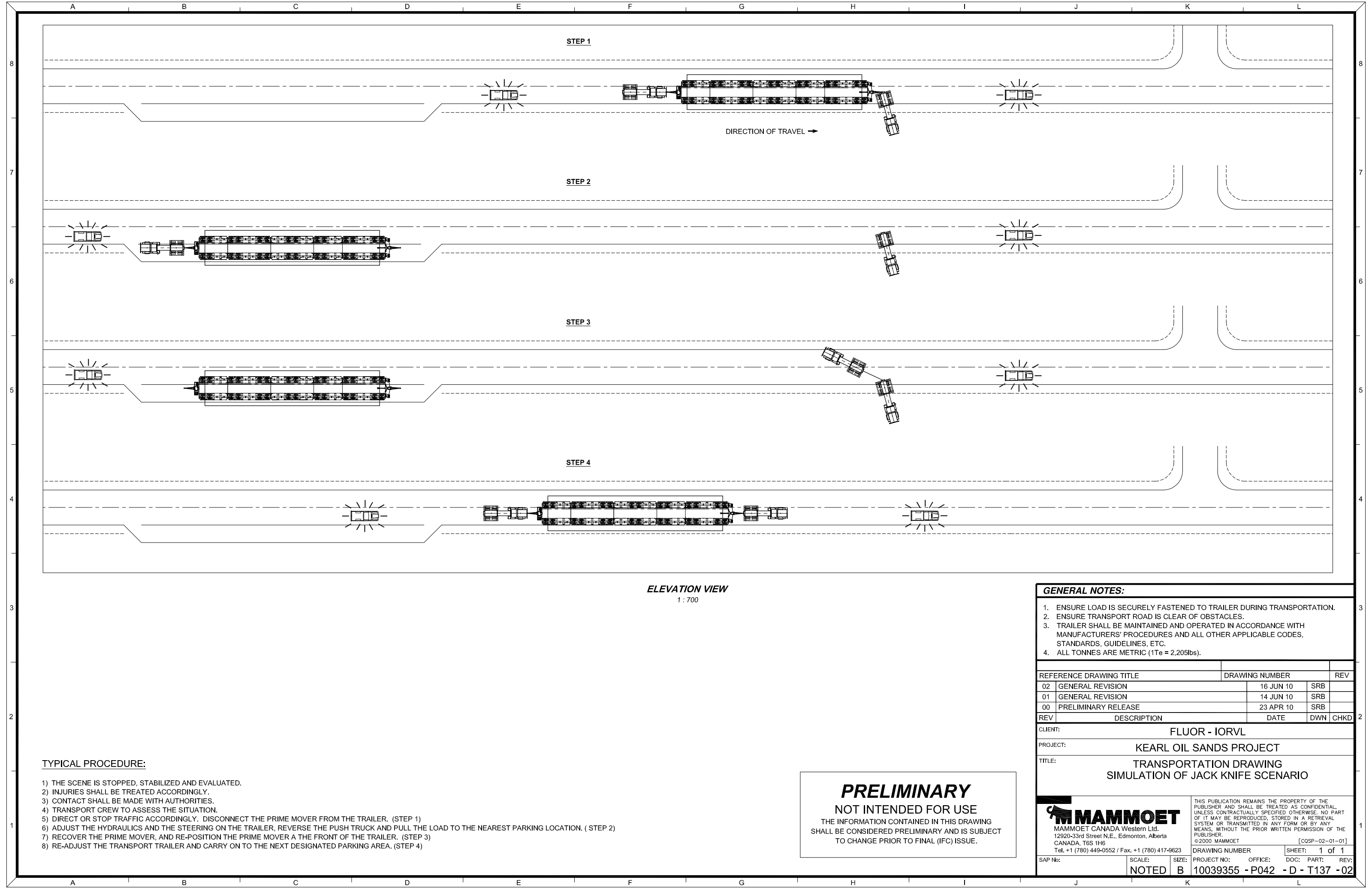




APPENDIX 1 – Table of Contents – Transportation Drawing



STEP 1

DIRECTION OF TRAVEL →

STEP 2

STEP 3

STEP 4

ELEVATION VIEW
1 : 700

TYPICAL PROCEDURE:

- 1) THE SCENE IS STOPPED, STABILIZED AND EVALUATED.
- 2) INJURIES SHALL BE TREATED ACCORDINGLY.
- 3) CONTACT SHALL BE MADE WITH AUTHORITIES.
- 4) TRANSPORT CREW TO ASSESS THE SITUATION.
- 5) DIRECT OR STOP TRAFFIC ACCORDINGLY. DISCONNECT THE PRIME MOVER FROM THE TRAILER. (STEP 1)
- 6) ADJUST THE HYDRAULICS AND THE STEERING ON THE TRAILER, REVERSE THE PUSH TRUCK AND PULL THE LOAD TO THE NEAREST PARKING LOCATION. (STEP 2)
- 7) RECOVER THE PRIME MOVER, AND RE-POSITION THE PRIME MOVER A THE FRONT OF THE TRAILER. (STEP 3)
- 8) RE-ADJUST THE TRANSPORT TRAILER AND CARRY ON TO THE NEXT DESIGNATED PARKING AREA. (STEP 4)

PRELIMINARY
NOT INTENDED FOR USE
THE INFORMATION CONTAINED IN THIS DRAWING
SHALL BE CONSIDERED PRELIMINARY AND IS SUBJECT
TO CHANGE PRIOR TO FINAL (IFC) ISSUE.

GENERAL NOTES:

1. ENSURE LOAD IS SECURELY FASTENED TO TRAILER DURING TRANSPORTATION.
2. ENSURE TRANSPORT ROAD IS CLEAR OF OBSTACLES.
3. TRAILER SHALL BE MAINTAINED AND OPERATED IN ACCORDANCE WITH MANUFACTURERS' PROCEDURES AND ALL OTHER APPLICABLE CODES, STANDARDS, GUIDELINES, ETC.
4. ALL TONNES ARE METRIC (1Te = 2,205lbs).

REV	DESCRIPTION	DATE	DWN	CHKD
02	GENERAL REVISION	16 JUN 10	SRB	
01	GENERAL REVISION	14 JUN 10	SRB	
00	PRELIMINARY RELEASE	23 APR 10	SRB	

CLIENT: FLUOR - IORVL
PROJECT: KEARL OIL SANDS PROJECT
TITLE: TRANSPORTATION DRAWING
SIMULATION OF JACK KNIFE SCENARIO

MAMMOET MAMMOET CANADA Western Ltd. 12920-33rd Street N.E., Edmonton, Alberta CANADA, T6S 1H6 Tel. +1 (780) 449-0552 / Fax. +1 (780) 417-9623	THIS PUBLICATION REMAINS THE PROPERTY OF THE PUBLISHER AND SHALL BE TREATED AS CONFIDENTIAL, UNLESS CONTRACTUALLY SPECIFIED OTHERWISE. NO PART OF IT MAY BE REPRODUCED, STORED IN A RETRIEVAL SYSTEM OR TRANSMITTED IN ANY FORM OR BY ANY MEANS, WITHOUT THE PRIOR WRITTEN PERMISSION OF THE PUBLISHER. ©2000 MAMMOET [COSP-02-01-01]
SAP No:	DRAWING NUMBER: 10039355 - P042 - D - T137 - 02
SCALE: NOTED	SIZE: B
PROJECT NO: 10039355 - P042	OFFICE: - D - T137 - 02
DOC: PART:	REV: 1 of 1