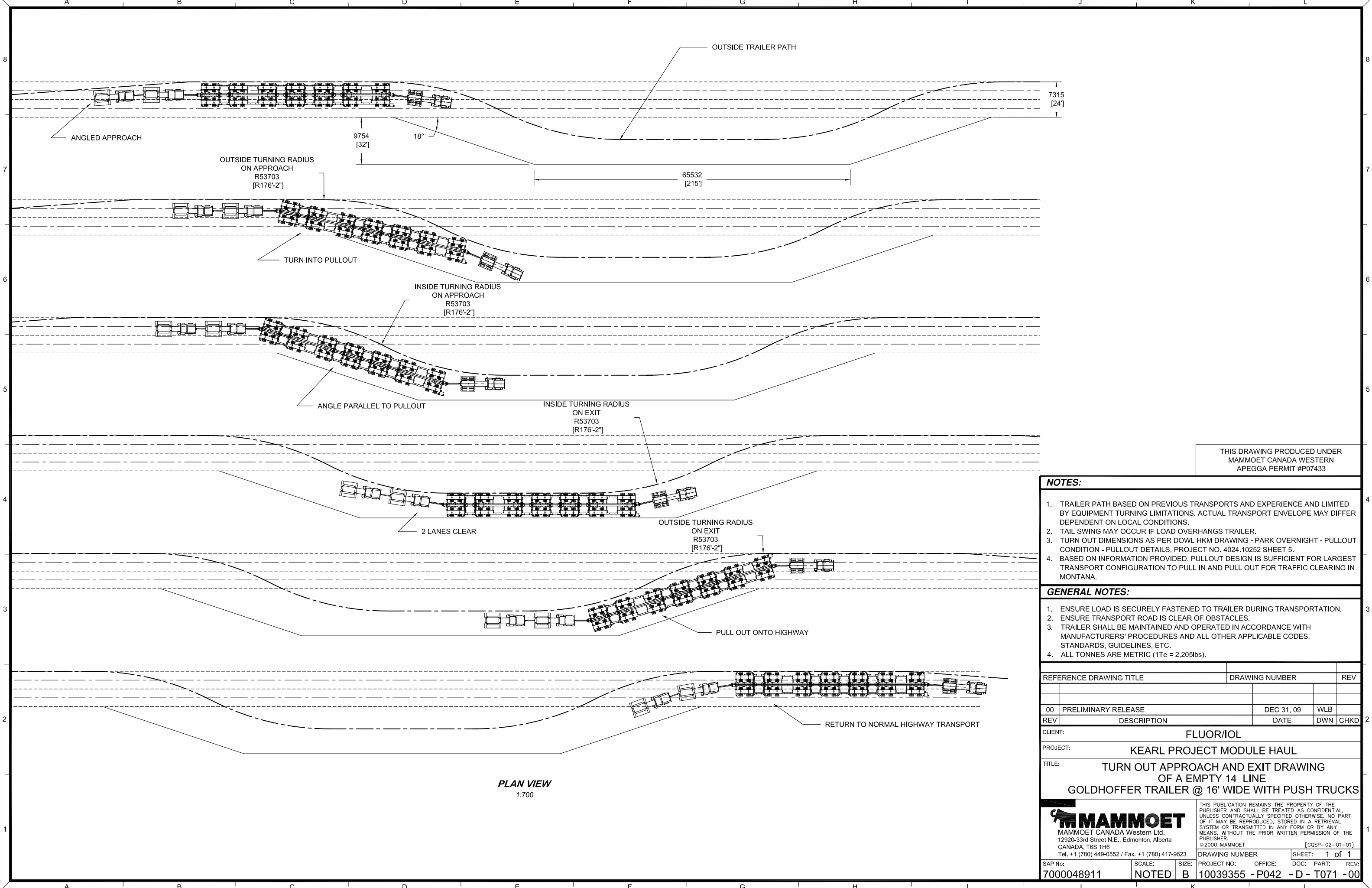




**APPENDIX 13 – Table of Contents – Trailer Path Drawing for Entrance to Turnout**



THIS DRAWING PRODUCED UNDER  
MAMMOET CANADA WESTERN  
APEGGA PERMIT #P07433

- NOTES:**
1. TRAILER PATH BASED ON PREVIOUS TRANSPORTS AND EXPERIENCE AND LIMITED BY EQUIPMENT TURNING LIMITATIONS. ACTUAL TRANSPORT ENVELOPE MAY DIFFER DEPENDENT ON LOCAL CONDITIONS.
  2. TAIL SWING MAY OCCUR IF LOAD OVERHANGS TRAILER.
  3. TURN OUT DIMENSIONS AS PER DOWL HKM DRAWING - PARK OVERNIGHT - PULLOUT CONDITION - PULLOUT DETAILS, PROJECT NO. 4024.10252 SHEET 5.
  4. BASED ON INFORMATION PROVIDED, PULLOUT DESIGN IS SUFFICIENT FOR LARGEST TRANSPORT CONFIGURATION TO PULL IN AND PULL OUT FOR TRAFFIC CLEARING IN MONTANA.

- GENERAL NOTES:**
1. ENSURE LOAD IS SECURELY FASTENED TO TRAILER DURING TRANSPORTATION.
  2. ENSURE TRANSPORT ROAD IS CLEAR OF OBSTACLES.
  3. TRAILER SHALL BE MAINTAINED AND OPERATED IN ACCORDANCE WITH MANUFACTURERS' PROCEDURES AND ALL OTHER APPLICABLE CODES, STANDARDS, GUIDELINES, ETC.
  4. ALL TONNES ARE METRIC (1Te = 2,205lbs).

REFERENCE DRAWING TITLE	DRAWING NUMBER	REV
00 PRELIMINARY RELEASE	DEC 31, 09	WLB
REV	DESCRIPTION	DATE DWN CHKD

CLIENT: **FLUOR/IOI**  
 PROJECT: **KEARL PROJECT MODULE HAUL**  
 TITLE: **TURN OUT APPROACH AND EXIT DRAWING OF A EMPTY 14 LINE GOLDHOFFER TRAILER @ 16' WIDE WITH PUSH TRUCKS**

**MAMMOET**  
 MAMMOET CANADA Western Ltd.  
 12920-33rd Street N.E., Edmonton, Alberta  
 CANADA, T6S 1H6  
 Tel. +1 (780) 449-0552 / Fax. +1 (780) 417-9623

THIS PUBLICATION REMAINS THE PROPERTY OF THE PUBLISHER AND SHALL BE TREATED AS CONFIDENTIAL, UNLESS CONTRACTUALLY SPECIFIED OTHERWISE. NO PART OF IT MAY BE REPRODUCED, STORED IN A RETRIEVAL SYSTEM OR TRANSMITTED IN ANY FORM OR BY ANY MEANS, WITHOUT THE PRIOR WRITTEN PERMISSION OF THE PUBLISHER.  
 ©2000 MAMMOET [COSP-02-01-01]

SAP No:	SCALE:	SIZE:	DRAWING NUMBER	SHEET: 1 of 1
7000048911	NOTED	B	PROJECT NO: 10039355 - P042 - D - T071 - 00	OFFICE: DOC: PART: REV: