



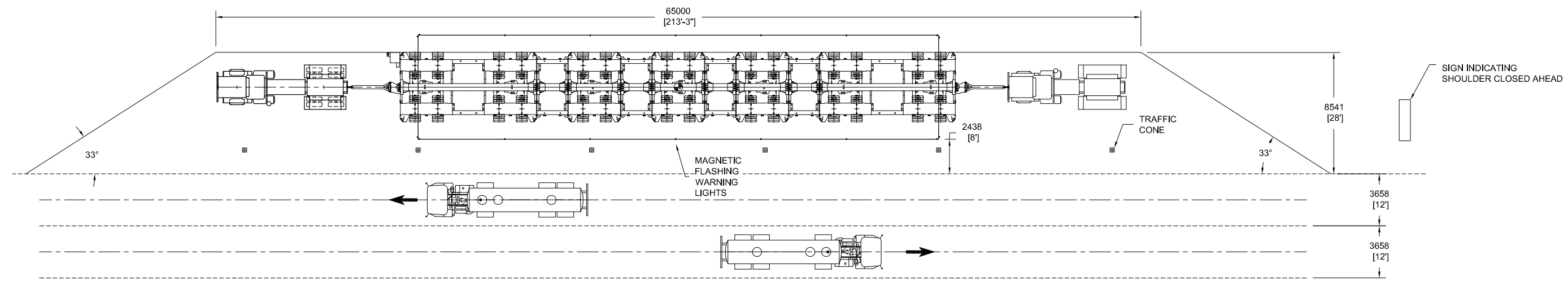
## APPENDIX 5 – Table of Contents – Typical Turnout Drawings

### 5.0 Typical Turnout Drawings

5.1	10039355-P042-D-T043.....	Park Overnight
5.2	10039355-P042-D-T042.....	Park
5.3	10039355-P042-D-T047.....	Clear



5.1 10039355-P042-D-T043.....Park Overnight



**PLAN VIEW - PARK DAYTIME**  
PULLOUT CONDITIONS  
1:300

THIS DRAWING PRODUCED UNDER  
MAMMOET CANADA WESTERN  
APEGGA PERMIT #P07433

**PRELIMINARY**  
NOT INTENDED FOR USE  
THE INFORMATION CONTAINED IN THIS DRAWING  
SHALL BE CONSIDERED PRELIMINARY AND IS SUBJECT  
TO CHANGE PRIOR TO FINAL (IFC) ISSUE.

**GENERAL NOTES:**

1. ENSURE LOAD IS SECURELY FASTENED TO TRAILER DURING TRANSPORTATION.
2. ENSURE TRANSPORT ROAD IS CLEAR OF OBSTACLES.
3. TRAILER SHALL BE MAINTAINED AND OPERATED IN ACCORDANCE WITH MANUFACTURERS' PROCEDURES AND ALL OTHER APPLICABLE CODES, STANDARDS, GUIDELINES, ETC.
4. ALL TONNES ARE METRIC (1Te = 2.205lbs).

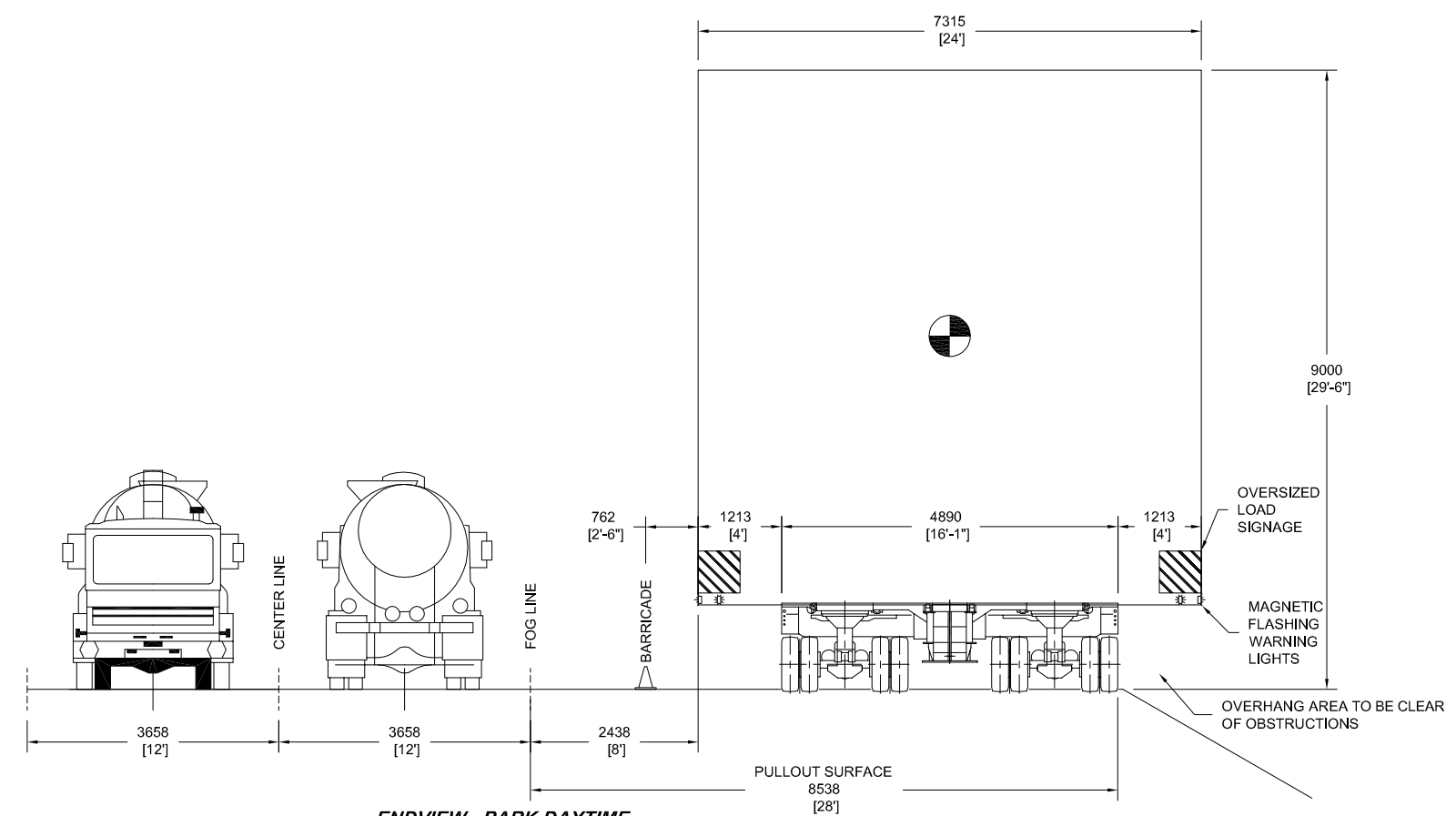
REFERENCE	DRAWING TITLE	DRAWING NUMBER	REV
04	GENERAL REVISION	APR 15, 10	SRB
03	GENERAL REVISION	APR 13, 2010	SRB
02	ADDED SHOULDER SIGN	MAR 15, 2010	SJG
01	PRELIMINARY RELEASE - ADDED DETAIL	OCT 20, 09	WLB
00	PRELIMINARY RELEASE	OCT 20, 09	WLB MT
REV	DESCRIPTION	DATE	DWN CHKD

CLIENT: **FLUOR - IOL**  
PROJECT: **KEARL OIL SANDS PROJECT**  
TITLE: **PARK DAYTIME - PULLOUT CONDITIONS  
OF A MODULE ON A  
14 LINE 16' WIDE HYDRAULIC PLATFORM TRAILER**

**MAMMOET**  
MAMMOET CANADA Western Ltd.  
12920-33rd Street N.E., Edmonton, Alberta  
CANADA, T6S 1H6  
Tel. +1 (780) 449-0552 / Fax. +1 (780) 417-9623

THIS PUBLICATION REMAINS THE PROPERTY OF THE PUBLISHER AND SHALL BE TREATED AS CONFIDENTIAL UNLESS CONTRACTUALLY SPECIFIED OTHERWISE. NO PART OF IT MAY BE REPRODUCED, STORED IN A RETRIEVAL SYSTEM OR TRANSMITTED IN ANY FORM OR BY ANY MEANS, WITHOUT THE PRIOR WRITTEN PERMISSION OF THE PUBLISHER.  
© 2000 MAMMOET [CQSP-02-01-01]

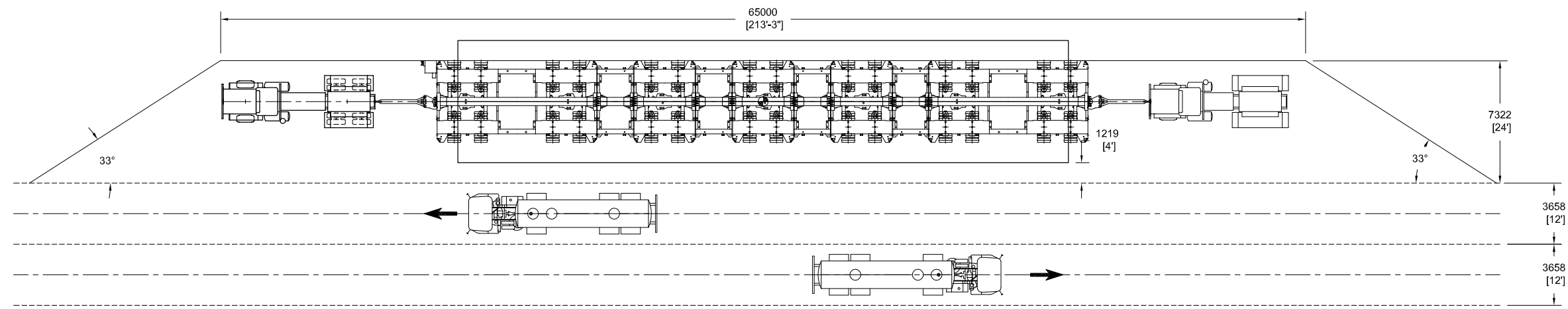
SAP No:	SCALE:	SIZE:	PROJECT NO:	OFFICE:	DOC:	PART:	REV:
7000045867	NOTED	B	10039355 - P042	- D	- T043	-04	



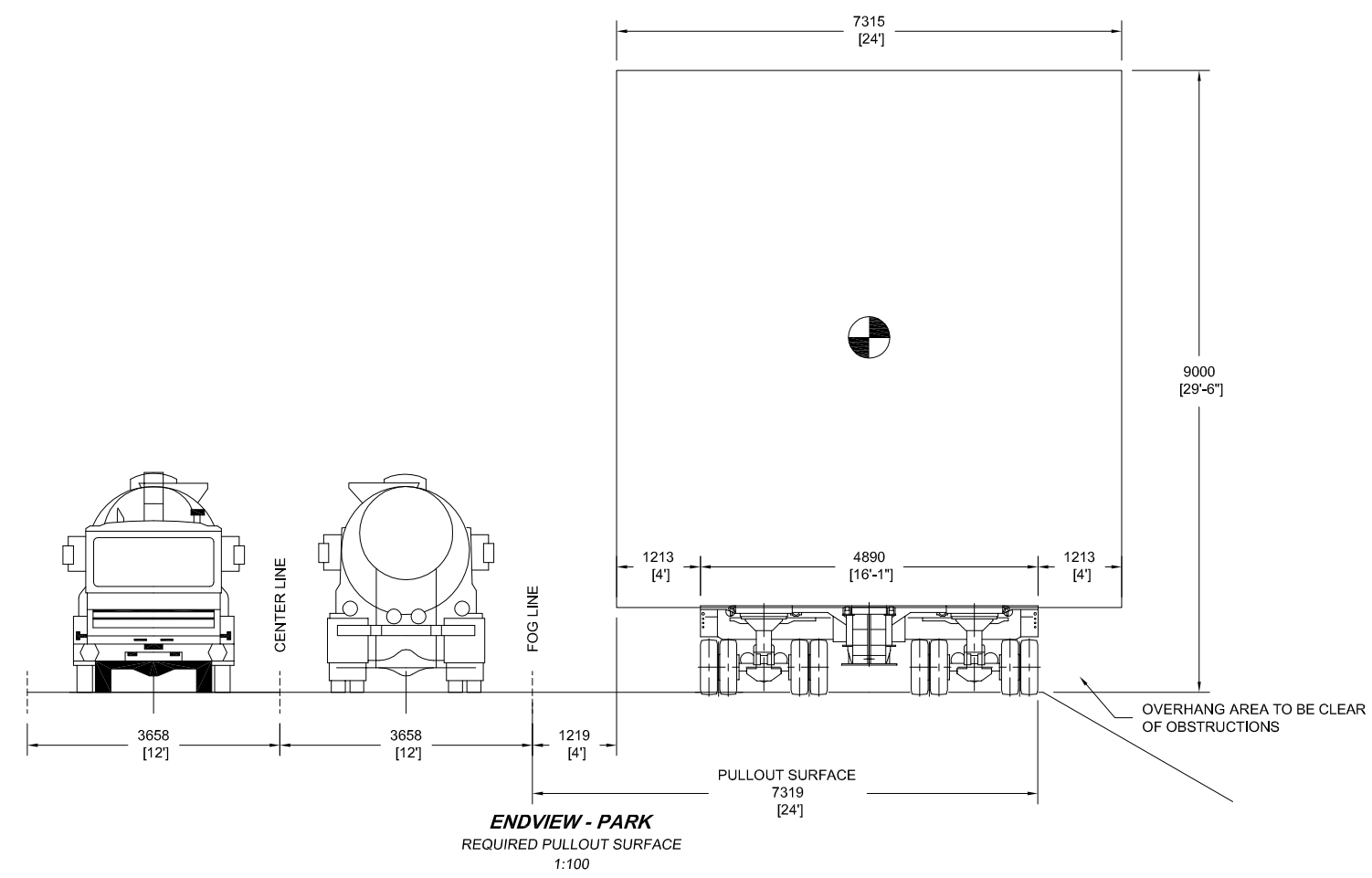
**ENDVIEW - PARK DAYTIME**  
REQUIRED PULLOUT SURFACE  
1:100



5.2 10039355-P042-D-T042.....Park



**PLAN VIEW - PARK**  
PULLOUT CONDITIONS  
1:300



**ENDVIEW - PARK**  
REQUIRED PULLOUT SURFACE  
1:100

THIS DRAWING PRODUCED UNDER  
MAMMOET CANADA WESTERN  
APEGGA PERMIT #P07433

**PRELIMINARY**  
NOT INTENDED FOR USE  
THE INFORMATION CONTAINED IN THIS DRAWING  
SHALL BE CONSIDERED PRELIMINARY AND IS SUBJECT  
TO CHANGE PRIOR TO FINAL (IFC) ISSUE.

**GENERAL NOTES:**

- ENSURE LOAD IS SECURELY FASTENED TO TRAILER DURING TRANSPORTATION.
- ENSURE TRANSPORT ROAD IS CLEAR OF OBSTACLES.
- TRAILER SHALL BE MAINTAINED AND OPERATED IN ACCORDANCE WITH MANUFACTURERS' PROCEDURES AND ALL OTHER APPLICABLE CODES, STANDARDS, GUIDELINES, ETC.
- ALL TONNES ARE METRIC (1Te = 2,205lbs).

REFERENCE DRAWING TITLE	DRAWING NUMBER	REV		
01 GENERAL REVISION	13 APR 10	SRB		
00 PRELIMINARY RELEASE	20 OCT 09	WLB MT		
REV	DESCRIPTION	DATE	DWN	CHKD

CLIENT: **FLUOR - IOL**

PROJECT: **KEARL OIL SANDS PROJECT**

TITLE: **PARK - PULLOUT CONDITIONS  
OF A MODULE ON A  
14 LINE 16' WIDE HYDRAULIC PLATFORM TRAILER**

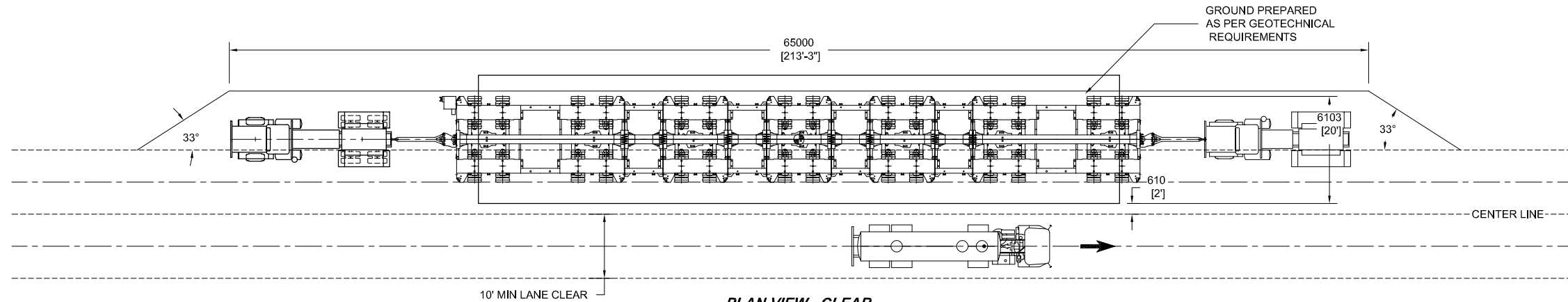
**MAMMOET**  
MAMMOET CANADA Western Ltd.  
12920-33rd Street N.E., Edmonton, Alberta  
CANADA, T6S 1H6  
Tel. +1 (780) 449-0552 / Fax. +1 (780) 417-9623

THIS PUBLICATION REMAINS THE PROPERTY OF THE PUBLISHER AND SHALL BE TREATED AS CONFIDENTIAL UNLESS CONTRACTUALLY SPECIFIED OTHERWISE. NO PART OF IT MAY BE REPRODUCED, STORED IN A RETRIEVAL SYSTEM OR TRANSMITTED IN ANY FORM OR BY ANY MEANS, WITHOUT THE PRIOR WRITTEN PERMISSION OF THE PUBLISHER.  
© 2000 MAMMOET [CQSP-02-01-01]

SAP No:	SCALE:	SIZE:	PROJECT NO:	OFFICE:	DOC:	PART:	REV:
7000045867	NOTED	B	10039355 -P042	- D -	T042	-01	



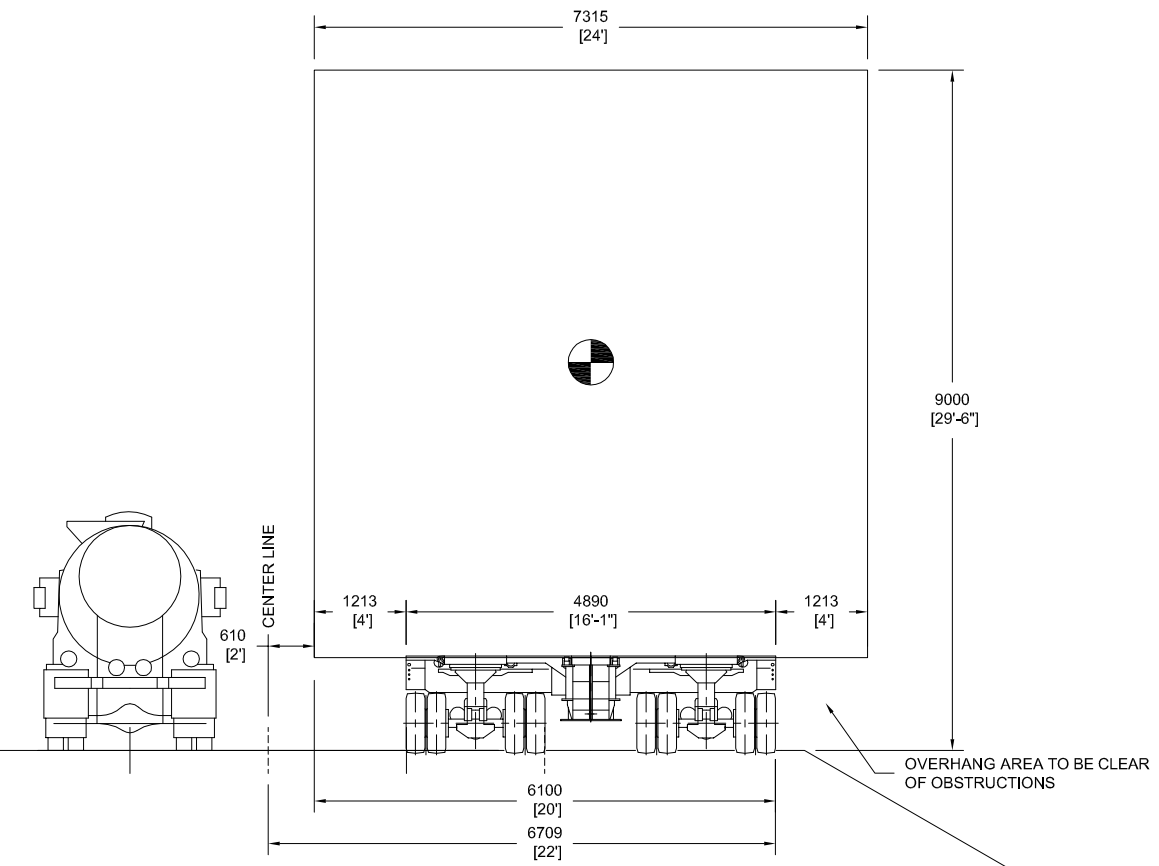
5.3 10039355-P042-D-T047.....Clear



**PLAN VIEW - CLEAR**  
PULLOUT CONDITION  
1:300

THIS DRAWING PRODUCED UNDER  
MAMMOET CANADA WESTERN  
APEGGA PERMIT #P07433

**PRELIMINARY**  
NOT INTENDED FOR USE  
THE INFORMATION CONTAINED IN THIS DRAWING  
SHALL BE CONSIDERED PRELIMINARY AND IS SUBJECT  
TO CHANGE PRIOR TO FINAL (IFC) ISSUE.



**ENDVIEW - CLEAR**  
REQUIRED PULLOUT SURFACE  
1:100

**GENERAL NOTES:**

- ENSURE LOAD IS SECURELY FASTENED TO TRAILER DURING TRANSPORTATION.
- ENSURE TRANSPORT ROAD IS CLEAR OF OBSTACLES.
- TRAILER SHALL BE MAINTAINED AND OPERATED IN ACCORDANCE WITH MANUFACTURERS' PROCEDURES AND ALL OTHER APPLICABLE CODES, STANDARDS, GUIDELINES, ETC.
- ALL TONNES ARE METRIC (1Te = 2,205lbs).

REFERENCE	DRAWING TITLE	DRAWING NUMBER	REV	
05	GENERAL REVISION	APR 14, 10	SRB	
04	GENERAL REVISION	APR 13, 2010	SRB	
03	EXTEND LENGTH OF PULLOUT	NOV 5, 09	BAP	
02	UPDATED INFORMATION	NOV 4, 09	BAP	
01	UPDATED INFORMATION	NOV 4, 09	WLB	
00	PRELIMINARY RELEASE	NOV 4, 09	WLB	
REV	DESCRIPTION	DATE	DWN	CHKD

CLIENT: FLUOR - IOL  
PROJECT: KEARL OIL SANDS PROJECT  
TITLE: CLEAR - PULLOUT CONDITIONS OF A MODULE ON A 14 LINE 16' WIDE HYDRAULIC PLATFORM TRAILER 2' FROM CENTERLINE

**MAMMOET**  
MAMMOET CANADA Western Ltd.  
12920-33rd Street N.E., Edmonton, Alberta  
CANADA, T6S 1H6  
Tel. +1 (780) 449-0552 / Fax. +1 (780) 417-9623

THIS PUBLICATION REMAINS THE PROPERTY OF THE PUBLISHER AND SHALL BE TREATED AS CONFIDENTIAL UNLESS CONTRACTUALLY SPECIFIED OTHERWISE. NO PART OF IT MAY BE REPRODUCED, STORED IN A RETRIEVAL SYSTEM OR TRANSMITTED IN ANY FORM OR BY ANY MEANS, WITHOUT THE PRIOR WRITTEN PERMISSION OF THE PUBLISHER.  
© 2000 MAMMOET [CGSP-02-01-01]

SAP No:	SCALE:	SIZE:	DRAWING NUMBER	PROJECT NO:	OFFICE:	DOC:	PART:	REV:
7000045867	NOTED	B	10039355 -P042	- D -	T047	-05		