



Glendive District ▶ Bridge Preservation

Stakeholder Meeting

March 1, 2021

Project Team

- ▶ Montana Department of Transportation (MDT)
 - ▶ Shane Mintz - MDT Glendive District Administrator
 - ▶ Ben Schendel, PE - MDT Consultant Design Engineer
- ▶ TD&H Engineering
 - ▶ Loran Frazier, PE - Principal in Charge
 - ▶ Brady Lassila, PE - Project Manager
 - ▶ Kevin McCray, PE - Bridge Engineer
- ▶ Strategies 360
 - ▶ Aly Russell - Public Involvement

Project Overview

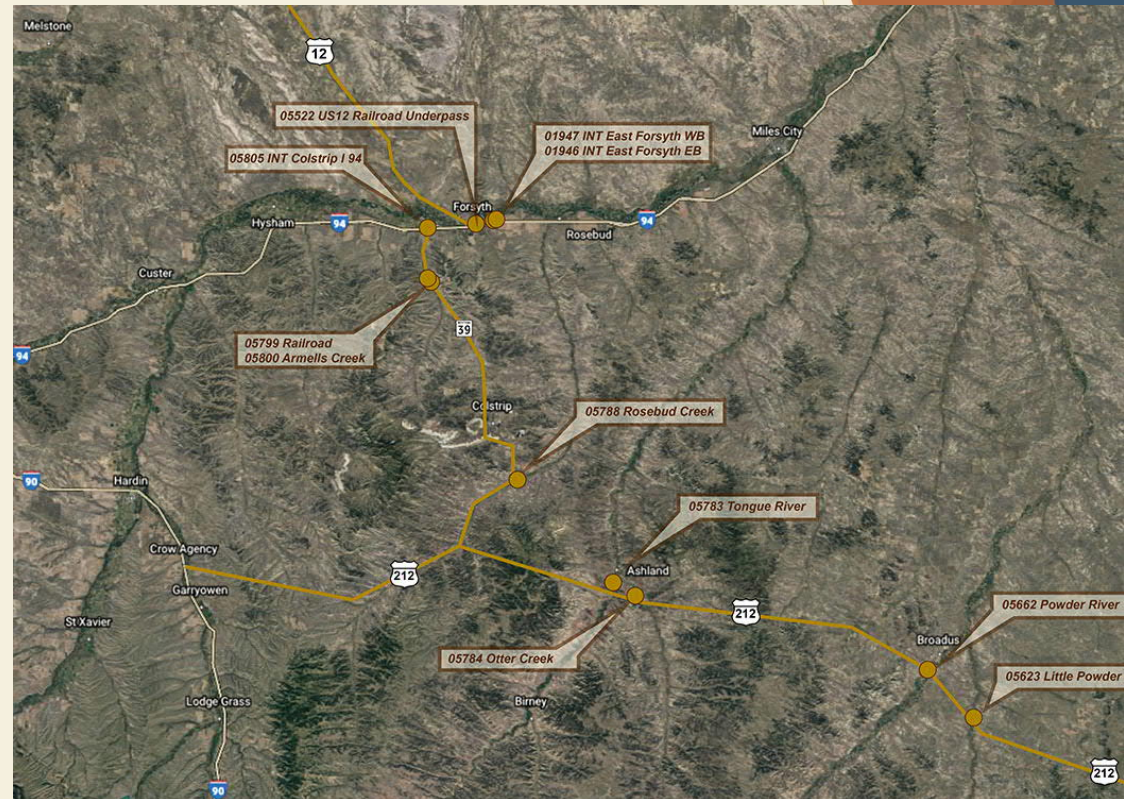
- ▶ Rehabilitate 11 bridges in SW Montana
- ▶ Bridges are aging and in need of repairs and routine upkeep
- ▶ They are safe to drive on, but important to perform repairs to keep them safe and functional
- ▶ Construction as early as 2022



Image of Deterioration to Bridge Deck

Project Overview

- ▶ Primarily a low-impact project to the traveling public
- ▶ Two lane highway traffic control
- ▶ Forsyth Interchange I-94 traffic control
- ▶ Colstrip Interchange traffic control



Colstrip Interchange Bridge

- ▶ Bridge Deck Needs Replacement
- ▶ Option 1 - Close Bridge During Construction
 - ▶ No traffic on bridge over I-94
 - ▶ Detours
 - ▶ Maintain emergency access
 - ▶ Construction lasts about 2-3 months

Image of Colstrip Interchange Bridge



Image of Deck of Colstrip Interchange Bridge



Colstrip Interchange Bridge Detours



Colstrip Interchange Bridge Detours



Colstrip Interchange Bridge Detours



Colstrip Interchange Bridge Detours



Colstrip Interchange Bridge Detours



Colstrip Interchange Bridge Detours

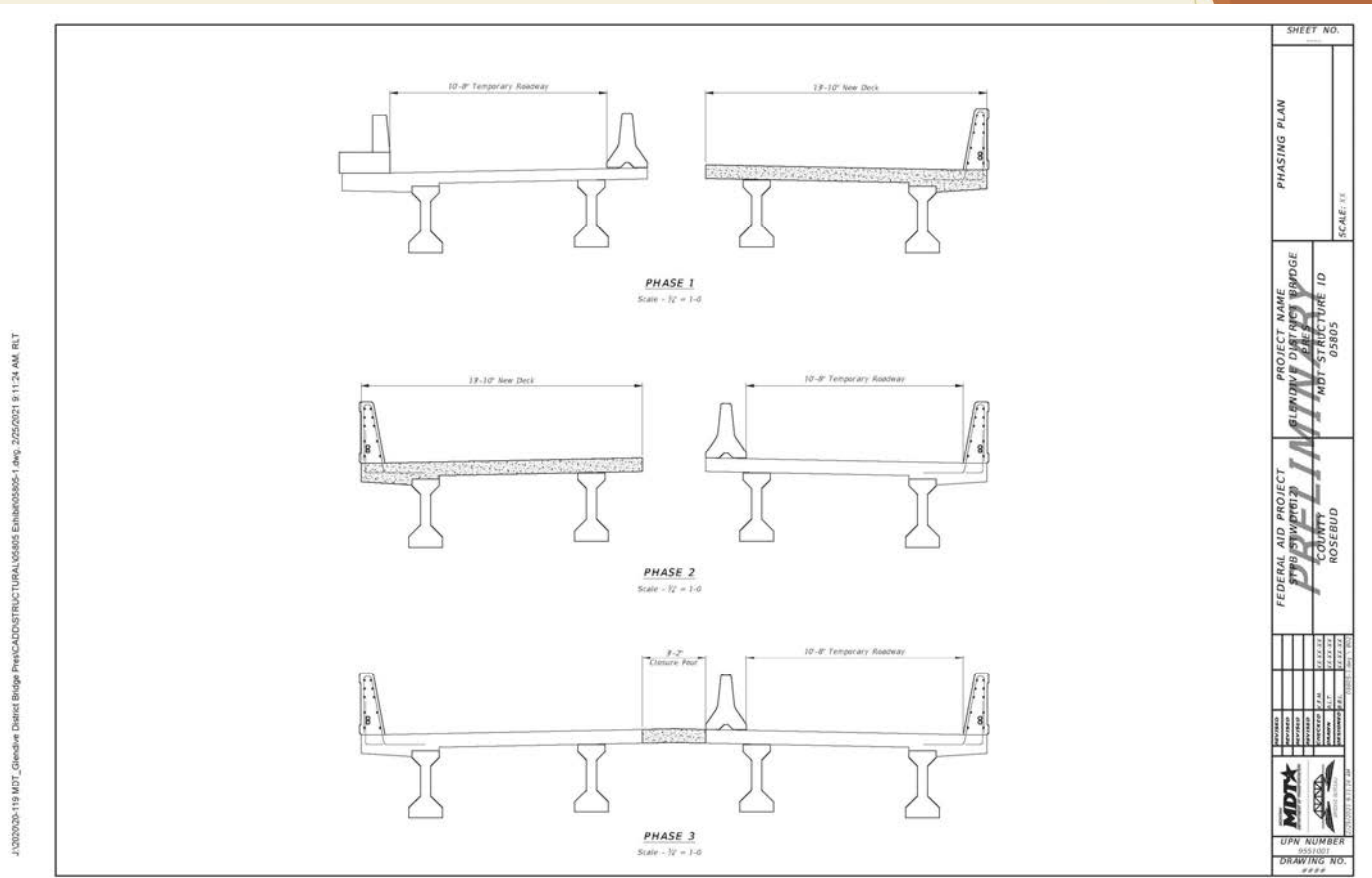


Colstrip Interchange Bridge

- ▶ Bridge Deck Needs Replacement

- ▶ Option 2 - Phase Construction to Leave 1 Lane of Traffic Open
 - ▶ Alternating 1-way traffic over I-94
 - ▶ Width restrictions (10.5 to 11.5 - ft wide lane)
 - ▶ Maintain emergency access
 - ▶ Construction lasts about 4-5 months

Colstrip Interchange Bridge - Phased Construction



Colstrip Interchange Bridge Comparison

- ▶ Option 1 - Bridge Closure
 - ▶ 2-3 months construction
 - ▶ Lower cost
 - ▶ Detours
 - ▶ Emergency access
- ▶ Option 2 - Phased Construction
 - ▶ 4-5 months construction
 - ▶ Higher cost
 - ▶ 1 lane with width restrictions
 - ▶ Emergency access

Keep Up with Our Progress

Project Website

- ▶ <https://www.mdt.mt.gov/pubinvolve/glendivebridges/>

Questions? We are here for you.

Contacts

- ▶ Aly Russell
Associate
Strategies 360
406-223-5058 / alyr@strategies360.com
- ▶ Brady Lassila, PE
Project Manager
TD&H Engineering
406-761-3010 / brady.lassila@tdhengineering.com
- ▶ Ben Schendel, PE
MDT Consultant Design Engineer
406-444-6248 / beschendel@mt.gov
- ▶ Shane Mintz
MDT Glendive District Administrator
406-345-8200 / smintz@mt.gov



VISION ZERO ★

zero deaths · zero serious injuries

**MONTANA DEPARTMENT
OF TRANSPORTATION**

Alternative accessible formats of this document will be provided on request. Persons who need an alternative format should contact the Office of Civil Rights, Department of Transportation, 2701 Prospect Avenue, PO Box 201001, Helena, MT 59620. Telephone 406-444-5416 or Montana Relay Service at 711.