

**NOTE:** Fabricate rail tubing on a curve when face of rail radius is 600 feet or less.

**NOTE:** Locate the splice on either side of post. Tube shop splices are not allowed.

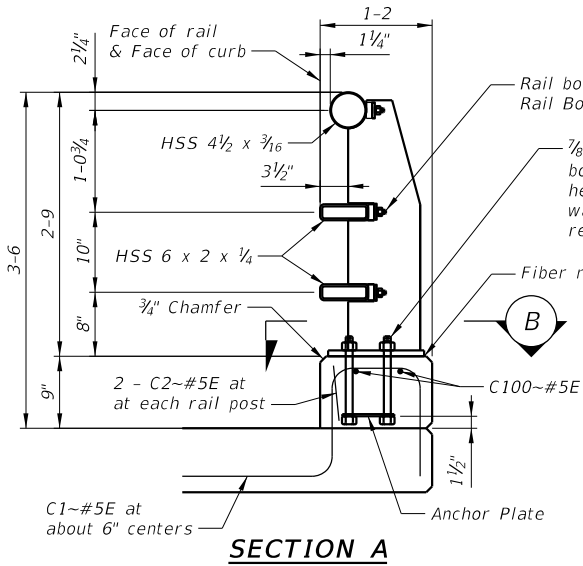
**NOTE:** Show vent and pickup holes in rails and sleeves on Fabricator's shop drawings. Place vent holes on the underside of the rail members as installed.

**NOTE:** Attach panel lengths of tube members continuously to a minimum of two posts (except at abutments with expansion joints).

**NOTE:** Do not provide a tube splice in first panel unless it crosses an expansion joint.

**NOTE:** Place expansion splice in rail such that it is positioned between the same rail posts as the expansion joint.

**INSIDE ELEVATION OF RAIL**



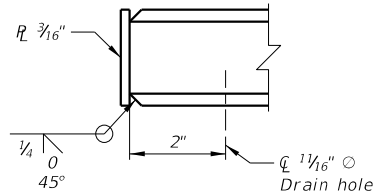
Rail bolt assembly (See Rail Bolt detail) (Typ.)

7/8" O x 1 1/2" Galvanized high strength bolts (ASTM F 3125 Grade A325) with heavy hex nut and galvanized hardened washer (2" thread, wrench tight, 4 required per post)

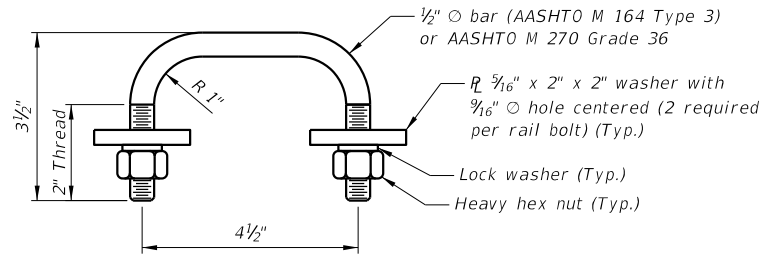
Fiber reinforced pad

**NOTE:** Finish the top of slab under each rail post to a smooth and uniform surface to assure a proper alignment of the post and a tight fit between the fiber reinforced pad and concrete. Bush hammering is acceptable only to remove high spots.

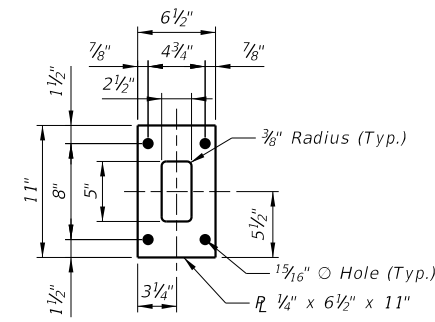
**NOTE:** Use fiber reinforced pads meeting the requirements of subsection 711.16 of the Standard Specifications. Size and position the pads such that not less than 1/2" of the pad protrudes on all sides of the base plate. Punch slotted holes in pads to match base plate.



**TUBE CAP DETAIL**

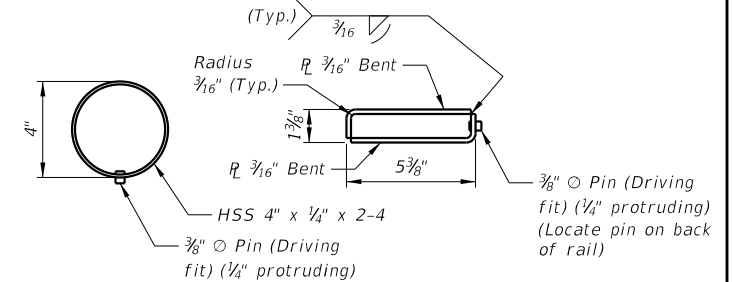


**RAIL BOLT DETAIL**



**NOTE:** Anchor bolts may be tack welded to anchorage (shop or field).

**ANCHOR PLATE DETAIL**



**NOTE:** Locate 3/8" O Pin at mid-length of sleeve.

**SLEEVE FABRICATION DETAILS**

**BILL OF REINFORCING STEEL**

FOR ONE CURB ONLY  
(ALL DIMENSIONS ARE OUT TO OUT)

Mark	Size	Type	Length	A	B	C	D	E	G	N
C1	#5E	526	4-0 1/2		11"	1-1 3/4	1-1 3/4	10"		
C2	#5E	41	2-6 3/4	11"	8 3/4"	11"	6 1/4"	6 1/4"		

**NOTE:** See Bridge Plans for number of bars required and longitudinal bars.

STANDARD BRIDGE RAIL  
TYPE OPEN RAIL 42"



REVISIONS	DATE	BY	CHKD	APP'D	SCALE

DRAWING NO.  
SBR-OR42