

Montana Department of Transportation Bridge Bureau Approved Construction Equipment List

Make:	CATERPILLAR
Model:	950M
Equipment Type:	WHEEL LOADER
Contractor Modifications:	NONE

Interstate Approval Conditions

Approval Type	CROSSING ONLY
Speed:	NO RESTRICTION
Weight:	42,360 LB OR LESS
Traffic:	APPROVED WITH REGULAR TRAFFIC
Location Restrictions:	REMAIN IN PAINTED LANE

Non-Interstate Approval Conditions

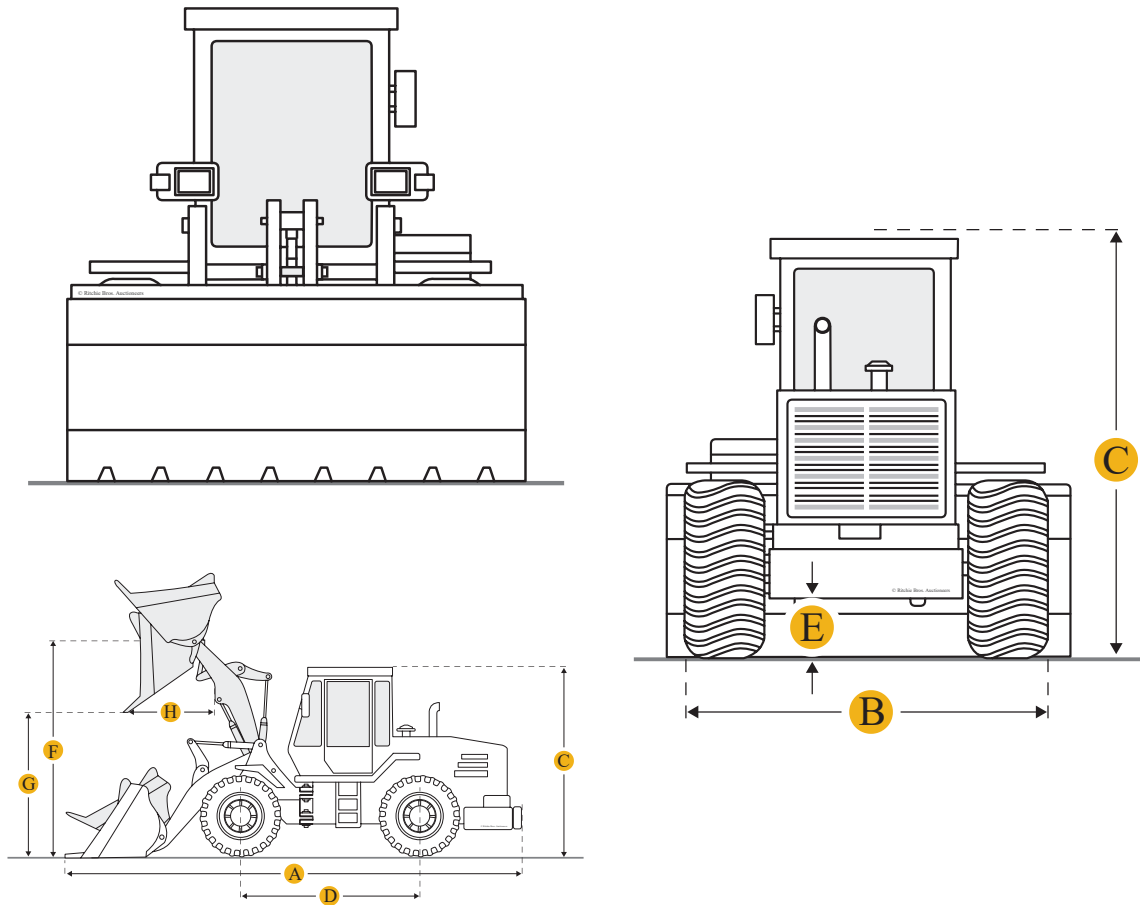
Approval Type	CROSSING ONLY
Speed:	NO RESTRICTION
Weight:	42,360 LB OR LESS
Traffic:	APPROVED WITH REGULAR TRAFFIC
Location Restrictions:	REMAIN IN PAINTED LANE

Comments:

Equipment configuration, weights, and specifications on following pages. Approval does not apply to posted bridges. Other construction equipment is not allowed to operate on or cross bridge at the same time this equipment is on the bridge. Equipment must be empty while crossing.

[Equipment Types](#)
[Manufacturers](#)
[Home](#)
[Wheel Loader](#)
[Caterpillar](#)
[950M](#)

Caterpillar 950M Wheel Loader



Units

 Imperial

 Metric

Dimensions

Dimensions

E Ground Clearance

1.17 ft in

Hinge Pin Height At Carry Height

25 in

Note

All dimensions are approximate and based on Michelin 23.5R25 XHA2 L3 radial tires.

Height - Top Of Hood

106 in

Height - Top Of Rops

7.67 ft in

[Top](#)

Centerline Of Rear Axle To Edge Of Counterweight	76 in
Overall Length (Without Bucket)	272 in
Wheel Base	11 ft in
Centerline Of Rear Axle To Hitch	66 in
Maximum Width Over Tires (Loaded)	111 in
Height - Top Of Exhaust Pipe	90 in
Hinge Pin Height At Maximum Lift	159 in
Tread Width	84 in

Dimensions - High Lift

E Ground Clearance	1.17 ft in
Rack Back - Carry Height	49 degrees
Centerline Of Rear Axle To Edge Of Counterweight	6.33 ft in
Centerline Of Rear Axle To Hitch	5.5 ft in
Height - Top Of Exhaust Pipe	11.17 ft in
Height - Top Of Hood	8.83 ft in
Height - Top Of Rops	11.33 ft in
Hinge Pin Height At Carry Height	2.58 ft in
Hinge Pin Height At Maximum Lift	14.83 ft in
Lift Arm Clearance At Maximum Lift	11.92 ft in
Maximum Width - Over Tires - Loaded	9.25 ft in
Overall Length - Without Bucket	24.58 ft in
Note	All dimensions are approximate and based on Michelin 23.5R25 XHA2 L3 radial tires.
Rack Back - Maximum Lift	59 degrees
Rack Back At Ground	40 degrees
Tread Width	7 ft in
Wheel Base	11 ft in

Dimensions - Standard Lift

E Ground Clearance	1.17 ft in
---------------------------	------------

Overall Length - Without Bucket	22.67 ft in
Tread Width	7 ft in
Centerline Of Rear Axle To Hitch	5.5 ft in
Rack Back - Carry Height	49 degrees
Note	All dimensions are approximate and based on Michelin 23.5R25 XHA2 L3 radial tires.
Height - Top Of Rops	11.33 ft in
Hinge Pin Height At Carry Height	2.08 ft in
Rack Back - Maximum Lift	59 degrees
Height - Top Of Hood	8.83 ft in
Hinge Pin Height At Maximum Lift	13.25 ft in
Centerline Of Rear Axle To Edge Of Counterweight	6.33 ft in
Height - Top Of Exhaust Pipe	11.17 ft in
Rack Back At Ground	36 degrees
Lift Arm Clearance At Maximum Lift	10.75 ft in
Wheel Base	11 ft in
Maximum Width - Over Tires - Loaded	9.25 ft in

Specifications

Engine

Displacement	428 cu in
Bore	4.2 in
Stroke	5.4 in
Net Power - Iso 9249	230 hp
Engine Model	Cat C7.1 ACERT
Peak Gross Torque - 1,400 Rpm - Sae J1995	777 lb ft
Maximum Net Torque - 1,400 Rpm	726 lb ft
Maximum Net Power - 2,000 Rpm - Sae J1349	248 hp

Maximum Net Power - 2,000 Rpm - Iso 9249	248 hp
Maximum Net Power - 2,000 Rpm - Iso 9249 - Metric	252 hp
Peak Gross Torque - 1,400 Rpm - Iso 14396	774 lb ft
Maximum Power - 2,000 Rpm - Sae J1995	263 hp
Maximum Power - 2,000 Rpm - Iso 14396	261 hp
Maximum Power - 2,000 Rpm - Iso 14396 - Metric	265 hp

Note

The air conditioning system on this machine contains the fluorinated greenhouse gas refrigerant R134a (Global Warming Potential = 1430). The system contains 1.6 kg of refrigerant which has a CO2 equivalent of 2.288 metric tonnes.

Peak Gross Torque - 1,300 Rpm - Sae J1995	911 lb ft
Maximum Gross Power - Sae J1995	250 hp
Maximum Net Power - Sae J1349	230 hp
Maximum Gross Power - 2,100 Rpm - Sae J1995	250 hp
Maximum Net Power - 2,100 Rpm - Sae J1349	230 hp
Maximum Net Torque - 1,300 Rpm - Sae J1349	858 lb ft
Peak Gross Torque - 1,300 Rpm - Iso 14396	908 lb ft
Maximum Net Power - 2,100 Rpm - Iso 9249 - Metric	232 hp
Maximum Net Power - 2,100 Rpm - Iso 9249	230 hp
Maximum Power - 2,100 Rpm - Sae J1995	250 hp
Maximum Power - 2,100 Rpm - Iso 14396	249 hp
Maximum Power - 2,100 Rpm - Iso 14396 - Metric	253 hp
Maximum Net Torque - 1,300 Rpm	858 lb ft

Operational

Operating Weight 42360 lb

Transmission

Forward - 1	4.3 mph
Forward - 2	7.5 mph
Forward - 3	12 mph

Forward - 4	16 mph
Forward - 5	24.5 mph
Note	Maximum travel speed in standard vehicle with empty bucket and standard L3 tires with 787 mm (31 in) roll radius.
Reverse - 1	4.3 mph
Reverse - 2	7.5 mph
Reverse - 3	16 mph
Weights	
Operating Weight	42357 lb
Note	Weight based on a machine configuration with Michelin 23.5R25 XHA2 L3 radial tires, full fluids, operator, standard counterweight, cold start, roading fenders, Product Link?, manual diff lock/open axles (front/rear), power train guard, secondary steering, sound suppression and a 3.1 m3 (4.1 yd3) general purpose bucket with BOCE.
Buckets	
Bucket Capacities	2.5-9.2 m (3.3-12.0 yd)
Axles	
Front	Fixed
Rear	Oscillating ?13 degrees
Maximum Single-Wheel Rise And Fall	19.2 in
Hydraulic System	
Hydraulic Cycle Time - Total	8.9 s
Implement System - Maximum Operating Pressure	4250 psi
Implement System - Maximum Pump Output At 2,150 Rpm	76 gal/min
Implement Pump Type	Variable Axial Piston
Implement System - Optional 3rd Function Maximum Flow	63 gal/min
Implement System - Optional 3rd Function Maximum Pressure	3220 psi
Hydraulic Cycle Time - Rated Payload - Raise From Carry Position	5.1 s

Hydraulic Cycle Time - Rated Payload - Dump, At Maximum Raise	1.5 s
Hydraulic Cycle Time - Rated Payload - Lower, Empty, Float Down	2.3 s
Hydraulic Cycle Time - Rated Payload - Total	8.9 s
Brakes	
Brakes	Brakes meet ISO 3450 standards
Operating Specifications	
Note (1)	For a machine configuration as defined under ?Weight.?
Note (2)	Full compliance to ISO 143971:2007 Sections 1 thru 6, which requires 2% verification between calculations and testing.
Breakout Force	40690 lb
Static Tipping Load - Full 40 Degrees Turn - With Tire Deflection	24262 lb
Static Tipping Load - Full 40 Degrees Turn - No Tire Deflection	25926 lb
Service Refill Capacities	
Cooling System	15.6 gal
Fuel Tank	72.6 gal
Crankcase	5.8 gal
Def Tank	4.2 gal
Hydraulic Tank	33 gal
Transmission	11.4 gal
Differential - Final Drives - Front	11.4 gal
Differential - Final Drives - Rear	11.4 gal
Note	*Must meet the requirements outlined in ISO 22241-1.
Def Tank*	4.2 gal
Sound	
Note (1)	*Distance of 15 m (49.2 ft), moving forward in second gear ratio.
Note (2)	**For machines in European Union countries and in countries that adopt the ?EU Directives.?

Note (3)	***European Union Directive ? 2000/14/EC? as amended by ? 2005/88/EC.?
Note	*Distance of 15 m (49.2 ft), moving forward in second gear ratio.
With Cooling Fan Speed At Maximum Value - Operator Sound Pressure Level (Iso 6396:2008)	70 dB(A)
With Cooling Fan Speed At Maximum Value - Exterior Sound Power Level (Iso 6395:2008)	107 dB(A)
With Cooling Fan Speed At Maximum Value - Exterior Sound Pressure Level (Sae J88:2013)	75 dB(A)*
With Cooling Fan Speed At 70% Of Maximum Value - Operator Sound Pressure Level (Iso 6396:2008)**	69 dB(A)
With Cooling Fan Speed At 70% Of Maximum Value - Exterior Sound Power Level (Iso 6395:2008)**	104 LWA***
Exterior Sound Power Level - Iso 6395:2008	108 dB(A)
Exterior Sound Pressure Level - Sae J88:2013	75 dB(A)
Operator Sound Pressure Level - Iso 6396:2008	70 dB(A)
Cab	
Rops/Fops	ROPS/FOPS meet ISO 3471 and ISO 3449 Level II standards
Bucket Capacities	
Bucket Range	2.5-9.2 m (3.3-12.0 yd)
Engine - Tier 4 Final/Stage Iv	
Emissions	Tier 4/Stage IV

Compare similar models

Manufacturer/Model	Operating Weight
<input type="checkbox"/> Komatsu W170-2	42593.4 lb
<input type="checkbox"/> LiuGong CLG862	42549.3 lb
<input type="checkbox"/> John Deere 724K High-Lift	42483.1 lb

Compare

Find Caterpillar 950M Wheel Loader for Sale



[2018 Cat 950M Wheel Loader](#)

8650
 LAS VEGAS, NV



[2015 Cat 950M Wheel Loader](#)

13377
 NORTH EAST, MD

- [See Caterpillar Wheel Loader for sale rbauction.com](#)
- [See Caterpillar Wheel Loader for sale ironplanet.com](#)
- [See Caterpillar Wheel Loader for sale mascus.com](#)

[Need help? Contact Us](#)

English

Company

- [About Ritchie Bros.](#)
- [rbauction.com](#)
- [ironplanet.com](#)
- [mascus.com](#)
- [rbassetsolutions.com](#)
- [Contact Us](#)

Popular Searches

- [JCB 407ZX Wheel Loader](#)
- [Terex TR70 Rock Truck](#)
- [Caterpillar 365C L Hydraulic Excavator](#)
- [Terex TA40 Articulated Dump Truck](#)
- [Caterpillar 143H Motor Grader](#)
- [Volvo L90D Wheel Loader](#)
- [Hyundai HL780-3A Wheel Loader](#)
- [Bobcat S175 Skid Steer Loader](#)
- [Caterpillar D9T Crawler Tractor](#)

Looking for equipment or trucks?

Ritchie Bros. sells more new and used industrial equipment and trucks than any other company in the world.

- [Equipment for sale on rbauction.com](#)
- [Equipment for sale on ironplanet.com](#)
- [Equipment for sale on mascus.com](#)

[Sell your equipment](#)

© 2007-2018 RitchieSpecs Equipment Specifications Ritchie Bros. Auctioneers © [Privacy Statement](#) | [Terms of Use](#)
 OEM specifications are provided for base units. Actual equipment may vary with options.