

Montana Department of Transportation Bridge Bureau Approved Construction Equipment List

| | |
|----------------------------------|---------------------------------------------|
| Make: | Caterpillar |
| Model: | AP1055E with AS4252C screed and full hopper |
| Equipment Type: | paver |
| Contractor Modifications: | none |

Interstate Approval Conditions

| | |
|-------------------------------|-------------------------------|
| <i>Approval Type</i> | crossing only |
| <i>Speed:</i> | no restriction |
| <i>Weight:</i> | 82,208 lb or less |
| <i>Traffic:</i> | approved with regular traffic |
| <i>Location Restrictions:</i> | no restriction |

Non-Interstate Approval Conditions

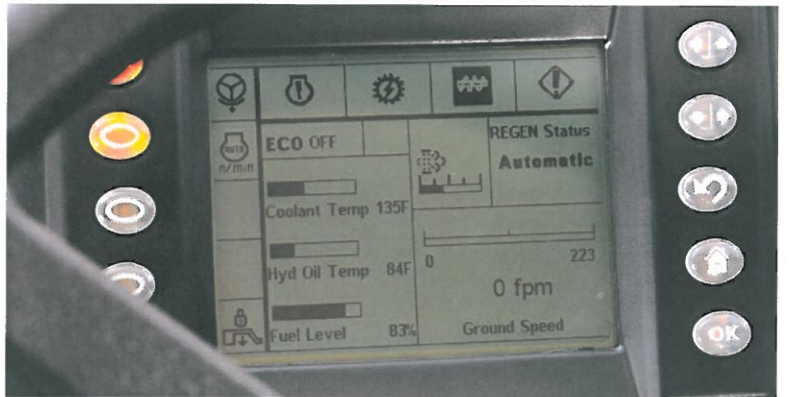
| | |
|-------------------------------|--------|
| <i>Approval Type</i> | denied |
| <i>Speed:</i> | denied |
| <i>Weight:</i> | denied |
| <i>Traffic:</i> | denied |
| <i>Location Restrictions:</i> | denied |

Comments:

Equipment configuration, weight, and specifications on following pages. Approval does not apply to load posted bridges. Other construction equipment is not allowed to operate on or cross bridge at the same time this equipment is on the bridge.

AP1055E PAVER

MOBIL-TRAC UNDERCARRIAGE



MACHINE OVERVIEW

The AP1055E is a high-production paver that features a durable Mobil-Trac undercarriage. It provides mobility and high-speed capability when moving around the job site and excellent flotation on soft base materials. Features such as eco-mode and automatic engine speed control optimize fuel efficiency while delivering high performance.

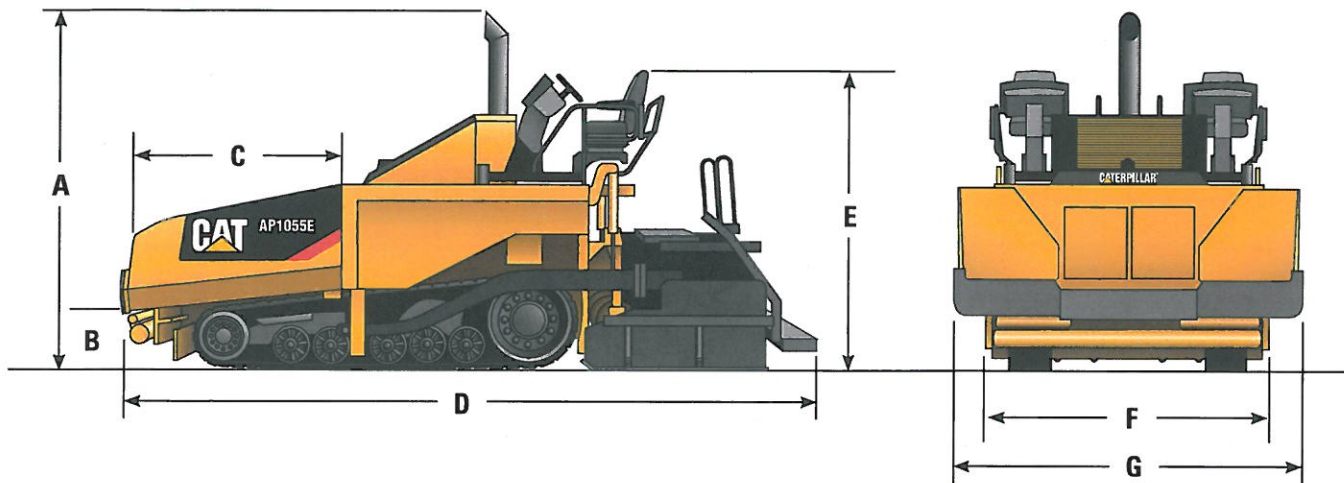
APPLICATIONS

- Airport projects
- Base aggregates
- Highways
- Interstates
- Large parking lots
- Motorways
- Overlays
- Roller compacted concrete (RCC)
- Rural roads
- Urban streets

HIGHLIGHTS

- 8.0 m (26' 4") maximum paving width
- Maximum throughput capacity is 1602 tonnes/h (1,766 tph)
- Cat C7.1 and C6.6 engines deliver 168 kW (225 hp) of power
- C7.1 meets Tier 4 Interim/Stage IIIB, C6.6 meets Tier 3/Stage IIIA emission standards
- Maintenance-free Mobil-Trac undercarriage, available with smooth or tread bar belt
- Advisor operating display; multiple language options, machine monitoring, job site planning
- Eco-mode and automatic engine speed control
- Fumes Management System
- Dual independent operating stations
- Individual control of each auger and each conveyor
- Friction steering

SPECIFICATIONS



Dimensions

| | |
|--------------------------------------------|------------------|
| A Operating height | 3.73 m (12' 3") |
| B Truck entry height | 576 mm (23") |
| C Hopper length | 2.10 m (6' 11") |
| D Transport length w/AS2302C screed | 5.46 m (17' 11") |
| Transport length w/AS3301C screed | 6.11 m (21' 7") |
| Transport length w/AS4251C screed | 6.52 m (21' 4") |
| Transport length w/AS4252C screed | 6.63 m (21' 8") |
| E Transport height | 2.87 m (9' 5") |
| F Transport width | 3.24 m (10' 8") |
| G Tractor operating width | 3.60 m (11' 10") |

Material Delivery

| | |
|-------------------------------|-------------------------------------------|
| Maximum throughput capacity | 1602 tonnes/h (1,766 tph) |
| Augers and conveyors | Reversible |
| Auger height adjustment range | 216 mm (8.5") |
| Auger flight diameter | 406 mm (16") |
| Hopper capacity w/tunnels | 7.1 m ³ (251 ft ³) |
| Power mainframe extensions | 457 mm (18") |

Powertrain

| | |
|-------------------------|---------------------------------|
| Cat C7.1 or C6.6 engine | 168 kW (225 hp) |
| Fuel capacity | 348 L (92 gal) |
| Generator size | 25 or 35 kW |
| Electrical system | 24 volt with 105 amp alternator |

Operating Weights

| | |
|-------------------------|------------------------------|
| AP1055E (Tractor only) | 16 810 kg (36,982 lb) |
| w/AS2302C | 19 894 kg (43,767 lb) |
| w/AS3301C | 20 076 kg (44,167 lb) |
| w/AS3301C w/C6.6 engine | 20 310 kg (44,776 lb) |
| w/AS4251C | 21 158 kg (46,645 lb) |
| w/AS4251C w/C6.6 engine | 21 392 kg (47,161 lb) |
| w/AS4252C | 20 211 kg (44,558 lb) |
| w/AS4252C w/C6.6 engine | 20 445 kg (45,074 lb) |

Screed Paving Range

| | |
|------------------|--------------------------------|
| w/AS2302C | 2.44 m - 6.70 m (8' - 24') |
| w/AS3301C | 2.44 m - 7.37 m (8' - 24' 2") |
| w/AS4251C | 3.05 m - 8.00 m (10' - 26' 4") |
| w/AS4252C | 3.05 m - 8.00 m (10' - 26' 4") |
| Max Paving Depth | 305 mm (12") |

Speed

| | |
|----------------------------|--------------------|
| Paving speed | 61 m/min (200 fpm) |
| Paving w/tamper bar screed | 25 m/min (82 fpm) |
| Travel speed | 14.5 km/hr (9 mph) |