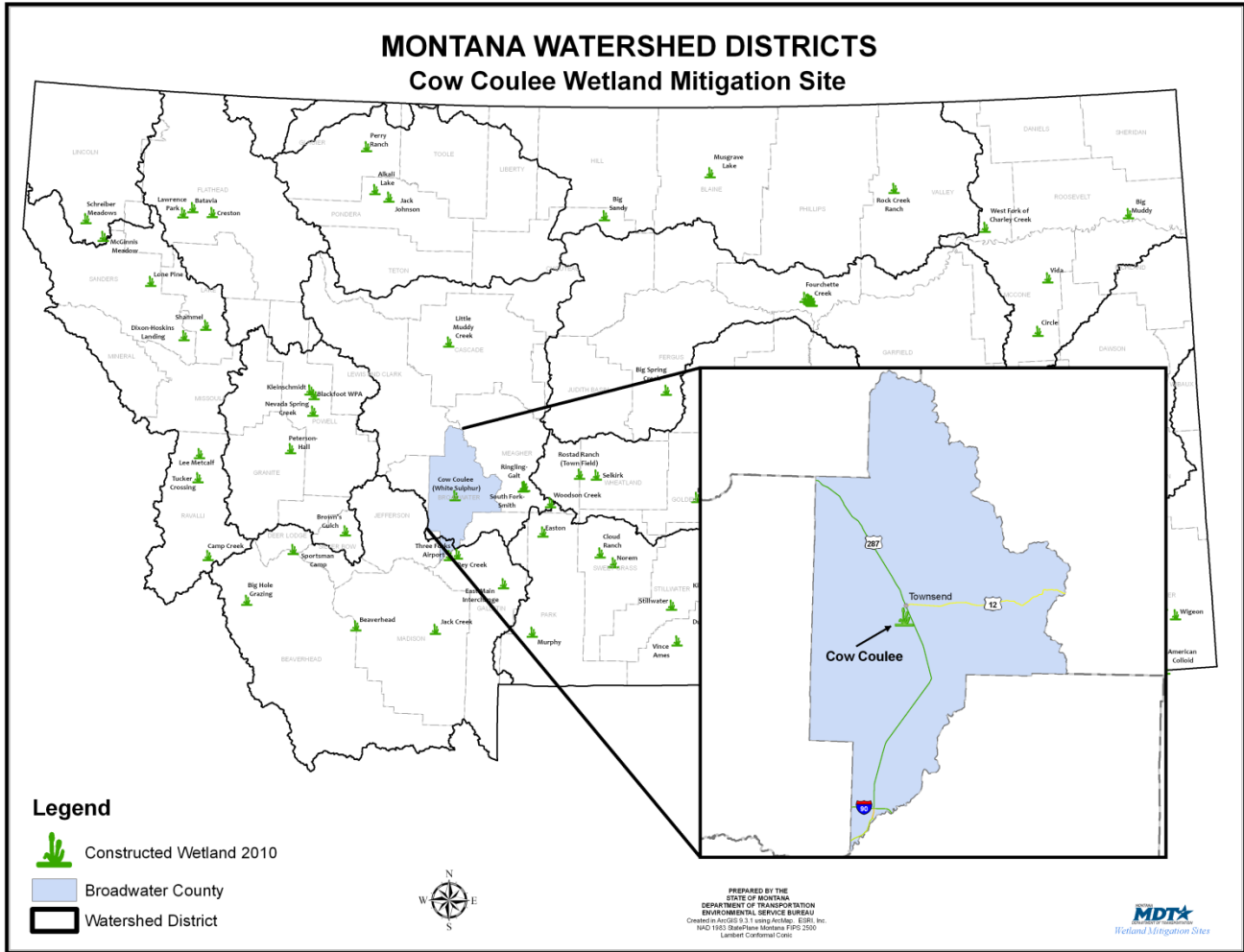


COW COULEE

Watershed # 7- Missouri-Sun-Smith River Basin
Broadwater County, Montana



LAND OWNERSHIP: PRIVATE

BACKGROUND INFORMATION

The Cow Coulee wetland mitigation project was constructed in 1997 to provide partial mitigation for existing and projected wetland impacts resulting from Montana Department of Transportation (MDT) projects in Watershed #7 (Missouri-Sun-Smith River Basin). Constructed in the MDT Butte District, the 9-acre mitigation site is located approximately southwest of the Townsend city limits in Broadwater County. This restoration project is anticipated to provide approximately 5 acres of mitigation credits to mitigate transportation projects in the watershed.

WETLAND INHABITANTS

FISH	
Minnnows – species unknown	
AMPHIBIANS	
Spotted frog (<i>Rana pretiosa</i>)	
REPTILES	
Common Garter Snake (<i>Thamnophis sirtalis</i>) Racer (<i>Coluber constrictor</i>)	
BIRDS	
American Avocet (<i>Recurvirostra americana</i>)	Killdeer (<i>Charadrius vociferous</i>)
American Robin (<i>Turdus migratorius</i>)	Mallard (<i>Anas platyrhynchos</i>)
American White Pelican (<i>Pelecanus erythrorhynchos</i>)	Mountain Bluebird (<i>Sialia currucoides</i>)
Bank Swallow (<i>Riparia riparia</i>)	Mourning Dove (<i>Zenaidura macroura</i>)
Black-billed Magpie (<i>Pica pica</i>)	Northern Flicker (<i>Colaptes auratus</i>)
Blue-winged Teal (<i>Anas discors</i>)	Northern Rough-winged Swallow (<i>Stelgidopteryx serripennis</i>)
Brown-headed Cowbird (<i>Molothrus ater</i>)	Osprey (<i>Pandion haliaetus</i>)
California Gull (<i>Larus californicus</i>)	Red-tailed Hawk (<i>Buteo jamaicensis</i>)
Canada Goose (<i>Branta Canadensis</i>)	Red-winged Blackbird (<i>Agelaius phoeniceus</i>)
Cinnamon Teal (<i>Anas cyanoptera</i>)	Ring-billed Gull (<i>Larus delawarensis</i>)
Clay-colored Sparrow (<i>Spizella pallida</i>)	Ring-necked Pheasant (<i>Phasianus colchicus</i>)
Common Nighthawk (<i>Chordeiles minor</i>)	Sandhill Crane (<i>Grus Canadensis</i>)
Common Raven (<i>Corvus corax</i>)	Song Sparrow (<i>Melospiza melodia</i>)
Common Snipe (<i>Gallinago gallinago</i>)	Spotted Sandpiper (<i>Actitis macularia</i>)
Double-crested Cormorant (<i>Phalacrocorax auritus</i>)	Tree Swallow (<i>Tachycineta bicolor</i>)
Eastern Kingbird (<i>Tyrannus tyrannus</i>)	Violet-green Swallow (<i>Tachycineta thalassina</i>)
European Starling (<i>Sturnus vulgaris</i>)	Western Meadowlark (<i>Sturnella neglecta</i>)
Grasshopper Sparrow (<i>Ammodramus savaamarum</i>)	Wood Duck (<i>Aix sponsa</i>)
Gray Catbird (<i>Dumetella carolinensis</i>)	Yellow Warbler (<i>Dendroica petechia</i>)
Green-winged Teal (<i>Anas crecca</i>)	Yellow-headed Blackbird (<i>Xanthocephalus xanthocephalus</i>)
MAMMALS	
American Badger (<i>Taxidea taxus</i>)	
Meadow Vole (<i>Microtus pennsylvanicus</i>)	
White-tailed deer (<i>Odocoileus virginianus</i>)	
Raccoon (<i>Procyon lotor</i>)	
Striped skunk (<i>Mephitis mephitis</i>)	
Mountain cottontail (<i>Sylvilagus nuttallii</i>)	

Bolded species were observed during 2004 monitoring. All other species were observed during one or more of the previous monitoring years, but not during 2004.



American Avocet



Common Garter Snake

WETLAND VEGETATION

Dominant wetland vegetation

Four community types were observed

Type 1- Broad-leaf cattail (*Typha latifolia*) and Hard stem bulrush (*Scirpus acutus*)

Type 2- Beaked sedge (*Carex rostrata*) and Baltic rush (*Juncus balticus*)

Type 3- Salt marsh bulrush (*Scirpus maritimus*)

Type 4- Foxtail barley (*Hordeum jubatum*) and Rocky Mountain Iris (*Iris missouriensis*)



Rocky Mountain Iris

Cow Coulee



Click the icon below for complete monitoring reports for this site (2001 to 2004)

