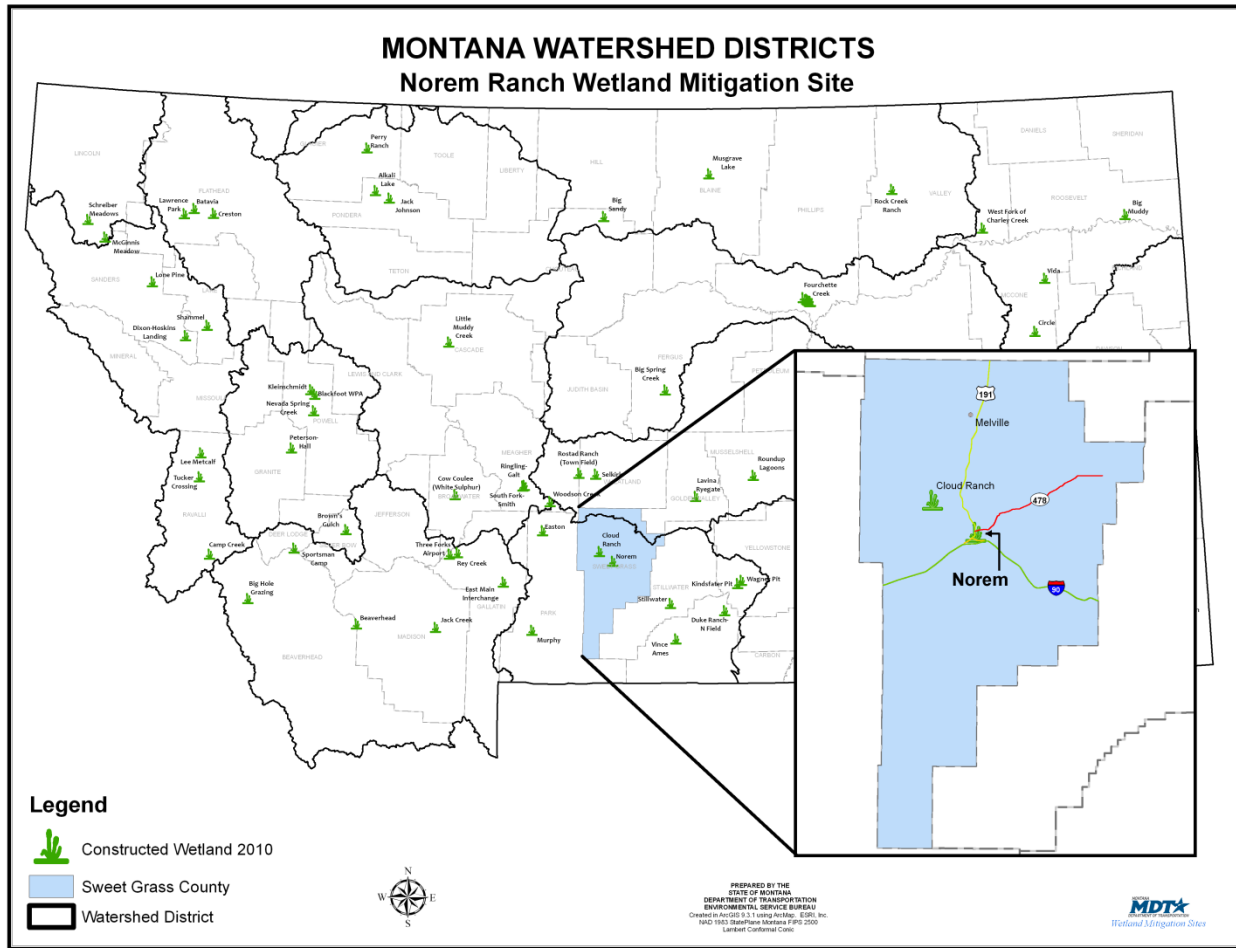


NOREM RANCH

Watershed # 13-Upper Yellowstone River Basin
Sweet Grass County, Montana



LAND OWNERSHIP: Private

BACKGROUND INFORMATION

This project was constructed in the fall of 2002 by the landowner and Maxim Technologies, Inc. to provide the Montana Department of Transportation (MDT) with wetland mitigation credits to offset wetland impacts associated with MDT projects in watershed #13 - Upper Yellowstone River Basin. The Norem wetland project site is located in Sweetgrass County northeast of Big Timber, MT. This restoration project has provided approximately 14 acres of mitigation credits to mitigate transportation projects in the watershed.

WETLAND INHABITANTS

FISH, REPTILE, and AMPHIBIAN	
Western Chorus Frog (<i>Pseudacris triseriata</i>)	
BIRD	
American Kestrel (<i>Falco sparverius</i>)	Mallard (<i>Anas platyrhynchos</i>)
Barn Swallow (<i>Hirundo rustica</i>)	Mourning Dove (<i>Zenaida macroura</i>)
Blue-winged Teal (<i>Anas discors</i>)	Osprey (<i>Pandion haliaetus</i>)
Brown-headed Cowbird (<i>Molothrus ater</i>)	Red-tailed Hawk (<i>Buteo jamaicensis</i>)
Canada Goose (<i>Branta canadensis</i>)	Red-winged Blackbird (<i>Agelaius phoeniceus</i>)
Cedar Waxwing (<i>Bombycilla cedrorum</i>)	Sandhill Crane (<i>Grus canadensis</i>)
Common Snipe (<i>Gallinago gallinago</i>)	Savanah Sparrow (<i>Passerculus sandwichensis</i>)
Common Nighthawk (<i>Chordeiles minor</i>)	Sora (<i>Porzana Carolina</i>)
Common Yellowthroat (<i>Geothlypis trichas</i>)	Spotted Sandpiper (<i>Actitis macularia</i>)
Eastern Kingbird (<i>Tyrannus tyrannus</i>)	Tern (unidentified) (<i>Sterna sp.</i>)
European Starling (<i>Sturnus vulgaris</i>)	Tree Swallow (<i>Iachycineta bicolor</i>)
Great Blue Heron (<i>Ardea herodias</i>)	Turkey Vulture (<i>Cathartes aura</i>)
Greater Yellowlegs (<i>Tringa melanoleuca</i>)	Western Meadowlark (<i>Sturnella neglecta</i>)
Gull (unidentified species)	Wild Turkey (<i>Meleagris gallopavo</i>)
Killdeer (<i>Charadrius vociferous</i>)	Wilson's Phalarope (<i>Phalaropus tricolor</i>)
Least Sandpiper (<i>Calidris minutilla</i>)	Yellow Warbler (<i>Dendroica petechia</i>)
MANIMAL	
Mule Deer (<i>Odocoileus hemionus</i>)	Red fox (<i>Vulpes vulpes</i>)
Raccoon (<i>Procyon lotor</i>)	White-tailed Deer (<i>Odocoileus virginianus</i>)

¹ Bolded species indicate those documented within the analysis area in 2008.



Tern

WETLAND VEGETATION

Dominant wetland vegetation

Seven community types were observed

Type 1- Sedges (Mixed *Carex*)

Type 2- Sedges/ Rushes (*Carex spp./Juncus spp.*)

Type 3- Smooth brome/ Meadow fescue (*Bromus inermis/Festuca pratensis*)

Type 4- Cottonwood/ Quackgrass (*Populus trichocarpa/Agropyron repens*)

Type 5- Broad-leaf cattail (*Typha latifolia*)

Type 6- Sandbar willow (*Salix exigua*)

Type 7- Cottonwood (*Populus trichocarpa*/Mixed Wetland Species)



Meadow fescue

Norem Ranch



Click the icon below for complete monitoring reports for this site (2004 to 2010)

