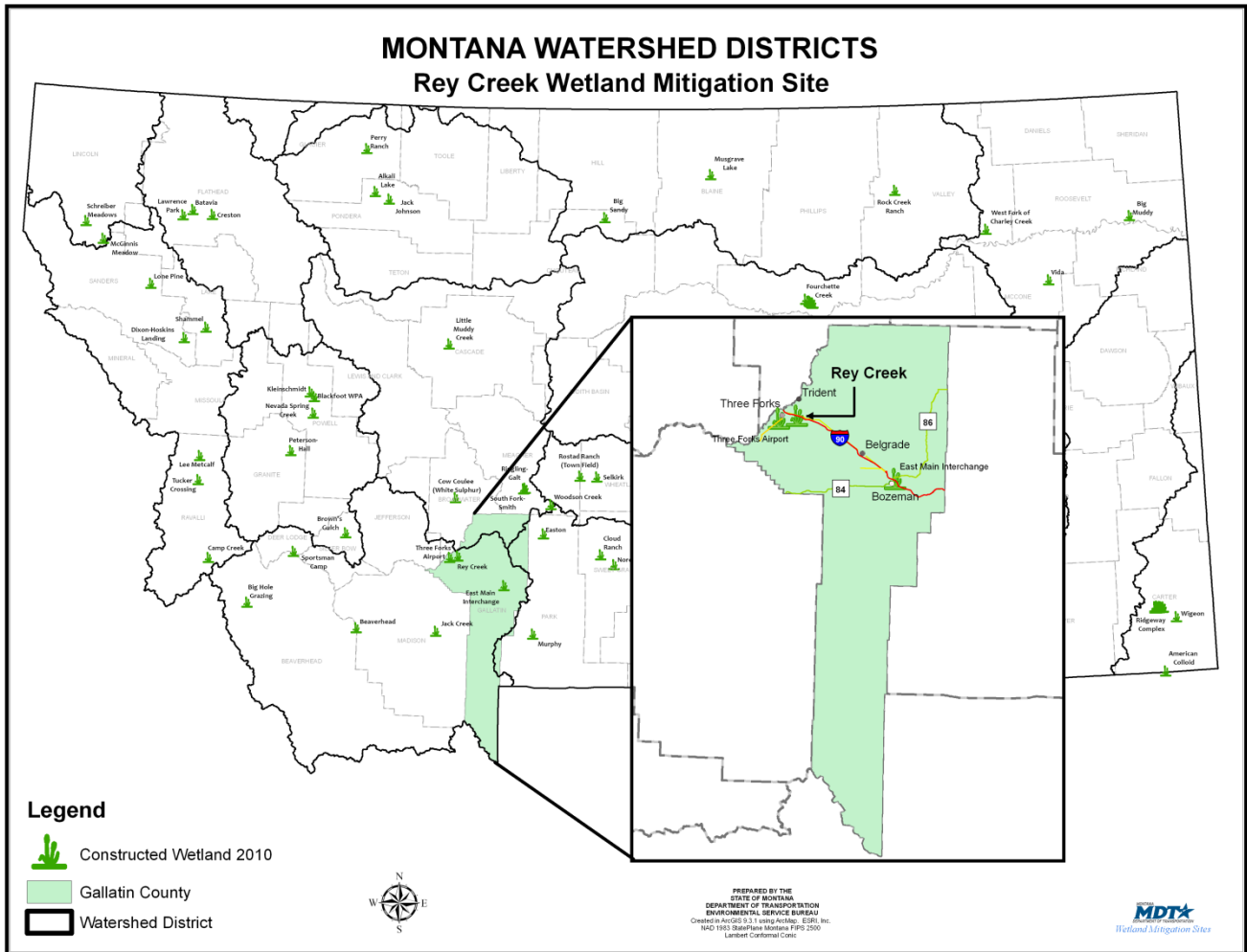


REY CREEK

Watershed # 6-Upper Missouri River Basin
Gallatin County, Montana



LAND OWNERSHIP: MONTANA DEPARTMENT OF TRANSPORTATION RIGHT OF WAY (MDT-ROW)

BACKGROUND INFORMATION

The Rey Creek onsite mitigation wetland was developed within the Rey Creek floodplain to mitigate wetland impacts associated with highway projects in the Upper Missouri River Basin (Watershed #6). The site is located west of Logan and east of Three Forks in Gallatin County. Construction was completed in September of 1999 with a goal of creating 1.2 acres of mitigation credits to mitigate transportation projects in the watershed.

WETLAND INHABITANTS

BIRDS

Marsh Wren (*Cistothorus palustris*)
Common yellowthroat (*Geothlypis trichas*)
Tree Swallow (*Tachycineta bicolor*)
Red-winged Blackbird (*Agelaius phoeniceus*)

Mammals

Muskrat (*Ondatra zibethica*)
Beaver (*Castor Canadensis*)
White-tailed deer (*Odocoileus virginiana*)



Common yellowthroat

WETLAND VEGETATION

Dominant wetland vegetation

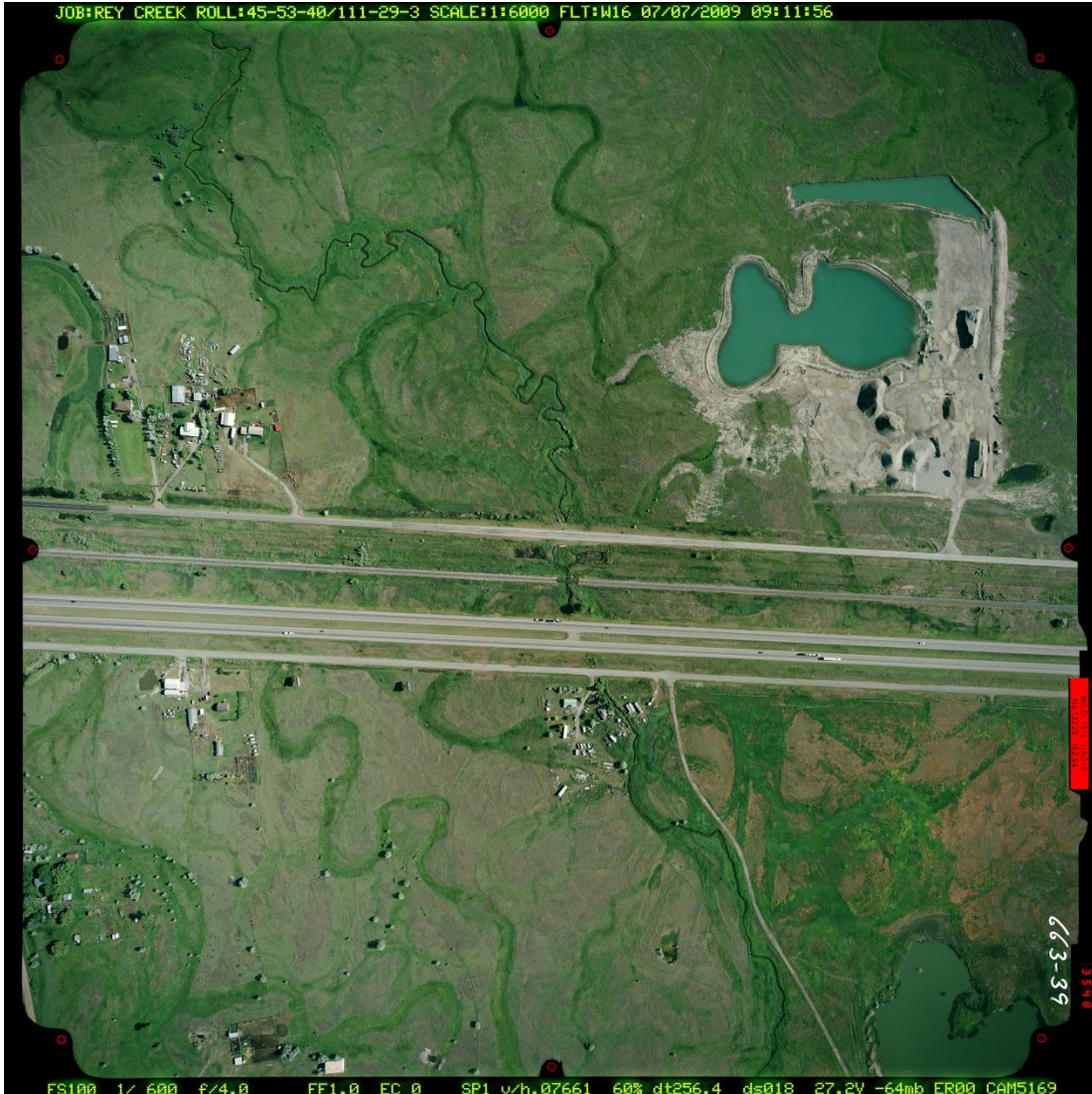
Three community types were observed

Type 1- Broad-leaf cattail (*Typha latifolia*)

Type 2- Bulrush (*Scripus spp.*)

Type 3- Spike rush (*Eleocharis spp.*)

Rey Creek



Click the icon below for complete monitoring reports for this site (2001 to 2003)