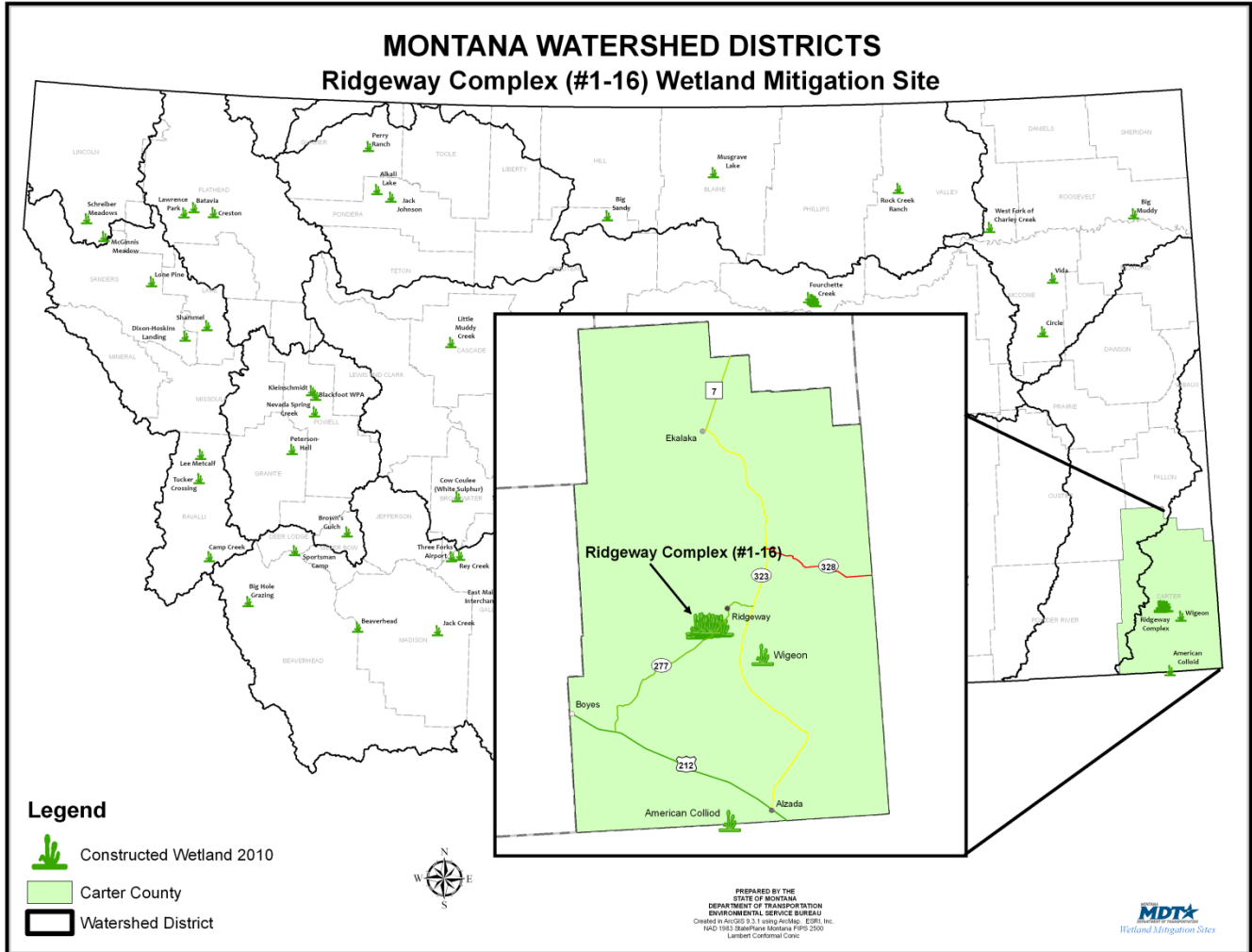


RIDGEWAY COMPLEX

(INCLUDES 16 MITIGATION SITES)

Watershed # 16-Little Missouri River Basin

Carter County, Montana



LAND OWNERSHIP: BUREAU OF LAND MANAGEMENT (BLM)

BACKGROUND INFORMATION

The Ridgeway wetland complex was a cooperative project with the Bureau of Land Management (BLM) and MDT to provide wetland mitigation credits to address impacts associated with MDT projects in Watershed #16 (Little Missouri River Basin). Eight wetlands were created during the summer of 2000 and an additional eight were completed in January of 2001. The 16 constructed sites vary in size from 0.5 to 7.5 acres. This restoration project provided approximately 50 acres of mitigation credits to mitigate transportation projects in the watershed.

WETLAND INHABITANTS

FISH	
Unknown Species [possibly Plains Killifish (<i>Fundulus zebrinus</i>)] – Wetland 13	
AMPHIBIAN and REPTILE	
northern leopard frog (<i>Rana pipiens</i>)	plains garter snake (<i>Thamnophis radix</i>)
Painted turtle (<i>Chrysemys picta</i>)	

* Bolded species were observed for the first time in 2007.

BIRD	
American Avocet (<i>Recurvirostra americana</i>)	Greater Yellowlegs (<i>Tringa melanoleuca</i>)
American Bittern (<i>Botaurus lentiginosus</i>)	Killdeer (<i>Charadrius vociferous</i>)
American Coot (<i>Fulica Americana</i>)	Lark Bunting (<i>Calamospiza melanocorys</i>)
American Robin (<i>Turdus migratorius</i>)	Lazuli Bunting (<i>Passerina amoena</i>)
American Wigeon (<i>Anas americana</i>)	Mallard (<i>Anas platyrhynchos</i>)
Barn Swallow (<i>Hirundo pyrrhonota</i>)	Marbled Godwit (<i>Limosa fedoa</i>)
Black Tern (<i>Chlidonias niger</i>)	Meadowlark (<i>Sturnella neglecta</i>)
Blue-winged Teal (<i>Anas discors</i>)	Mourning Dove (<i>Zenaidura macroura</i>)
Bobolink (<i>Dolichonyx oryzivorus</i>)	Northern Shoveler (<i>Anas clypeata</i>)
Canada Goose (<i>Branta canadensis</i>)	Red-winged Blackbird (<i>Agelaius phoeniceus</i>)
Chestnut-collared Longspur (<i>Calcarius ornatus</i>)	Sandpiper (<i>Calidris</i> sp.)
Cinnamon Teal (<i>Anas cyanoptera</i>)	Short-eared Owl (<i>Asio flammeus</i>)
Long-billed Dowitcher (<i>Limnodromus scolopaceus</i>)	Spotted Sandpiper (<i>Actitis macularia</i>)
Eared Grebe (<i>Podiceps nigricollis</i>)	Upland Sandpiper (<i>Bartramia longicauda</i>)
Ferruginous Hawk (<i>Buteo regalis</i>)	Vesper Sparrow (<i>Poocetes gramineus</i>)
Gadwall (<i>Anas strepera</i>)	Western Meadowlark (<i>Sturnella neglecta</i>)
Grasshopper Sparrow (<i>Ammodramus savannarum</i>)	Willet (<i>Catoptrophorus semipalmatus</i>)
Great Blue Heron (<i>Ardea herodias</i>)	Wilson's Phalarope (<i>Phalaropus tricolor</i>)
Horned Lark (<i>Eremophila alpestris</i>)	Willet (<i>Catoptrophorus semipalmatus</i>)
Gray Partridge (<i>Perdix perdix</i>)	Yellow-headed Blackbird (<i>Xanthocephalus xanthocephalus</i>)
MAMMAL	
Mule Deer (<i>Odocoileus hemionus</i>)	White-tailed deer (<i>Odocoileus virginianus</i>)
Pronghorn (<i>Antilocarpa americana</i>)	White-tailed jackrabbit (<i>Lepus townsendii</i>)
Red Fox (<i>Vulpes fulva</i>)	

* Bolded species were observed for the first time in 2007.



Gadwall



Lazuli Bunting

WETLAND VEGETATION

Dominant wetland vegetation

Eight community types were observed

Type 1 – Big sagebrush/Silverscale saltbush (*Artemisia tridentate/Atriplex argentea*)

Type 2 – Broad-leaf cattail (*Typha latifolia*)

Type 3 – European water plantain (*Alisma plantago-aquatica*)

Type 4 – Creeping spike rush (*Eleocharis palustris*)

Type 5 – Foxtail barley (*Hordeum jubatum*)

Type 6 – Curly dock/ foxtail barley (*Rumex crispus/Hordeum jubatum*)

Type 7 – Curly dock (*Rumex crispus*)

Type 8 – Alkali cordgrass (*Spartina gracilis*)



European water plantain

Ridgeway Complex



Click the icon below for complete monitoring reports for this site (2003 to 2008)

