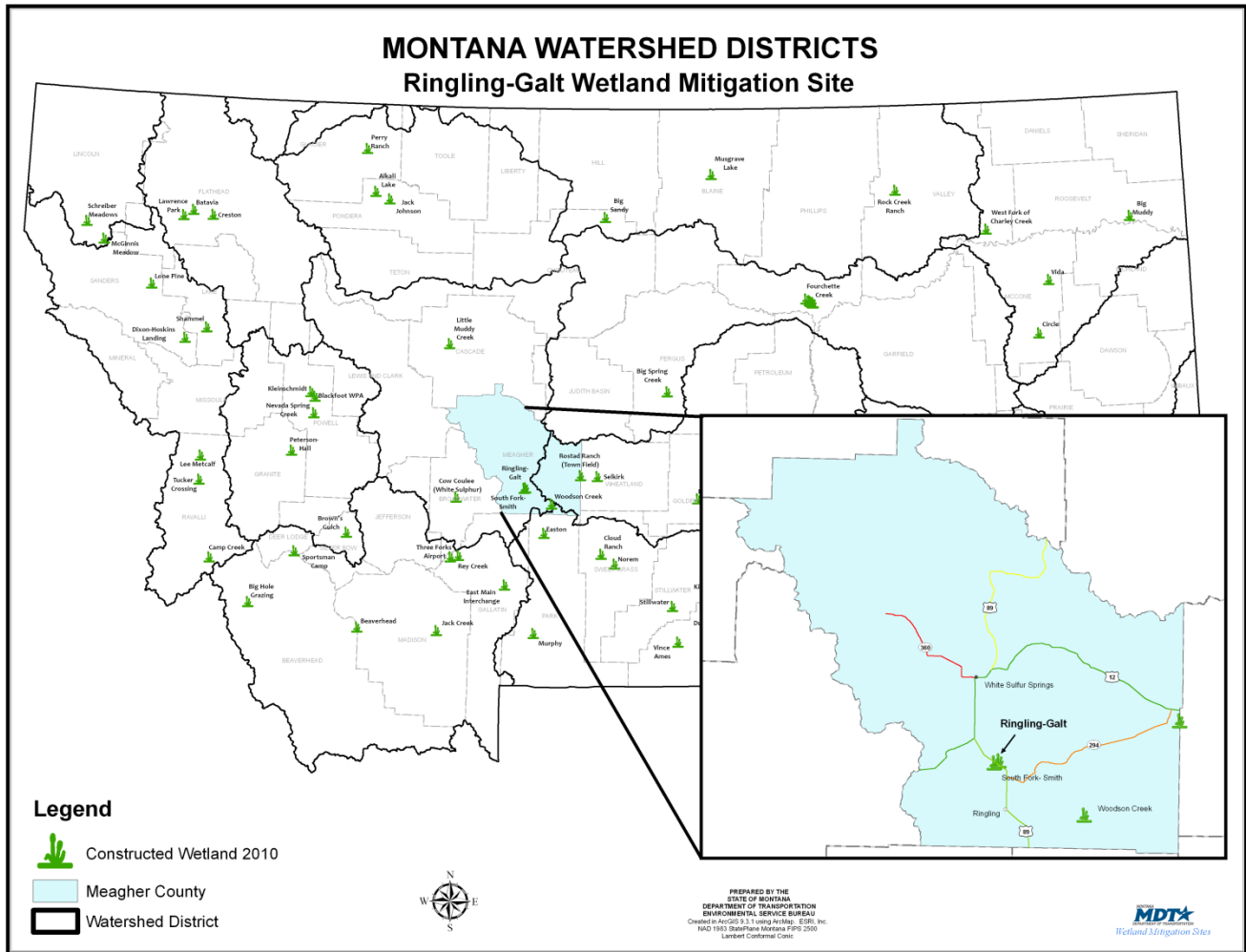


RINGLING-GALT

Watershed # 7-Missouri-Sun-Smith River Basin
Meagher County, Montana



LAND OWNERSHIP: PRIVATE

BACKGROUND INFORMATION

The Ringling-Galt wetland mitigation project was constructed in 2000 to provide partial mitigation for projected wetland impacts resulting from Montana Department of Transportation's (MDT) Ringling – North highway reconstruction project. Constructed in Watershed #7 (Missouri-Sun-Smith River Basin), the 20-acre mitigation site is located north of Ringling in Meagher County. The site occurs on private land (Galt Ranch) located northeast of US Hwy 89, in the Agate Creek drainage. Design features included minor excavation and placement of a dike across Agate Creek to retain surface water drainage. A primary water control structure was built near the north end of the dike, with an emergency spillway constructed around the north end of the dike. This restoration project is anticipated to provide approximately 9 acres of mitigation credits to mitigate transportation projects in the watershed.

WETLAND INHABITANTS

FISH, AMPHIBIANS, REPTILES

None

BIRDS

American Kestrel (*Falco sparverius*)
American Wigeon (*Anas americana*)
Blue-winged Teal (*Anas discors*)
Cinnamon Teal (*Anas cyanoptera*)
Cliff Swallow (*Petrochelidon pyrrhonota*)
Common Goldeneye (*Bucephala clangula*)
Common Raven (*Corvus corax*)
Green-winged Teal (*Anas crecca*)
Killdeer (*Charadrius vociferous*)
Mallard (*Anas platyrhynchos*)
Mourning Dove (*Zenaida macroura*)
Northern Pintail (*Anas acuta*)
Northern Shoveler (*Anas clypeata*)
Redhead (*Aythya americana*)
Red-tailed Hawk (*Buteo jamaicensis*)
Western Meadowlark (*Sturnella neglecta*)
Wilson's Phalarope (*Phalaropus tricolor*)

MAMMALS

Pronghorn Antelope (*Antilocapra americana*)
Mule Deer (*Odocoileus hemionus*) (scat only)
Elk (*Cervus elaphus*) (scat only)
Richardson's Ground Squirrel (*Spermophilus richardsonii*)

Bolded species were documented during the 2006 monitoring. All other species have been documented during one or more of the previous monitoring seasons.



Blue-winged Teal



Common Goldeneye

WETLAND VEGETATION

Upland vegetation

- Common yarrow (*Achillea millefolium*)
- Western wheatgrass (*Agropyron smithii*)
- Bluebunch wheatgrass (*Agropyron spicatum*)
- Big sagebrush (*Artemisia tridentate*)
- Blue gamma (*Bouteloua gracilis*)
- Canada thistle (*Cirsium arvense*)
- Hound's tongue (*Cynoglossum officinale*)
- American licorice (*Glycyrrhiza lepidota*)
- Foxtail barley (*Hordeum jubatum*)
- Rocky Mountain iris (*Iris missouriensis*)
- Lupin (*Lupinus sp.*)
- Silverweed cinquefoil (*Potentilla anserine*)
- Curly dock (*Rumex crispus*)
- Canada goldenrod (*Solidago Canadensis*)
- Needle and thread grass (*Stipa comata*)
- Common dandelions (*Taraxacum officinale*)

Wetland vegetation

- Water sedge (*Carex aquatilis*)
 - Baltic rush (*Juncus balticus*)
-

Ringling-Galt



Click the icon below for complete monitoring reports for this site (2001 to 2009)

