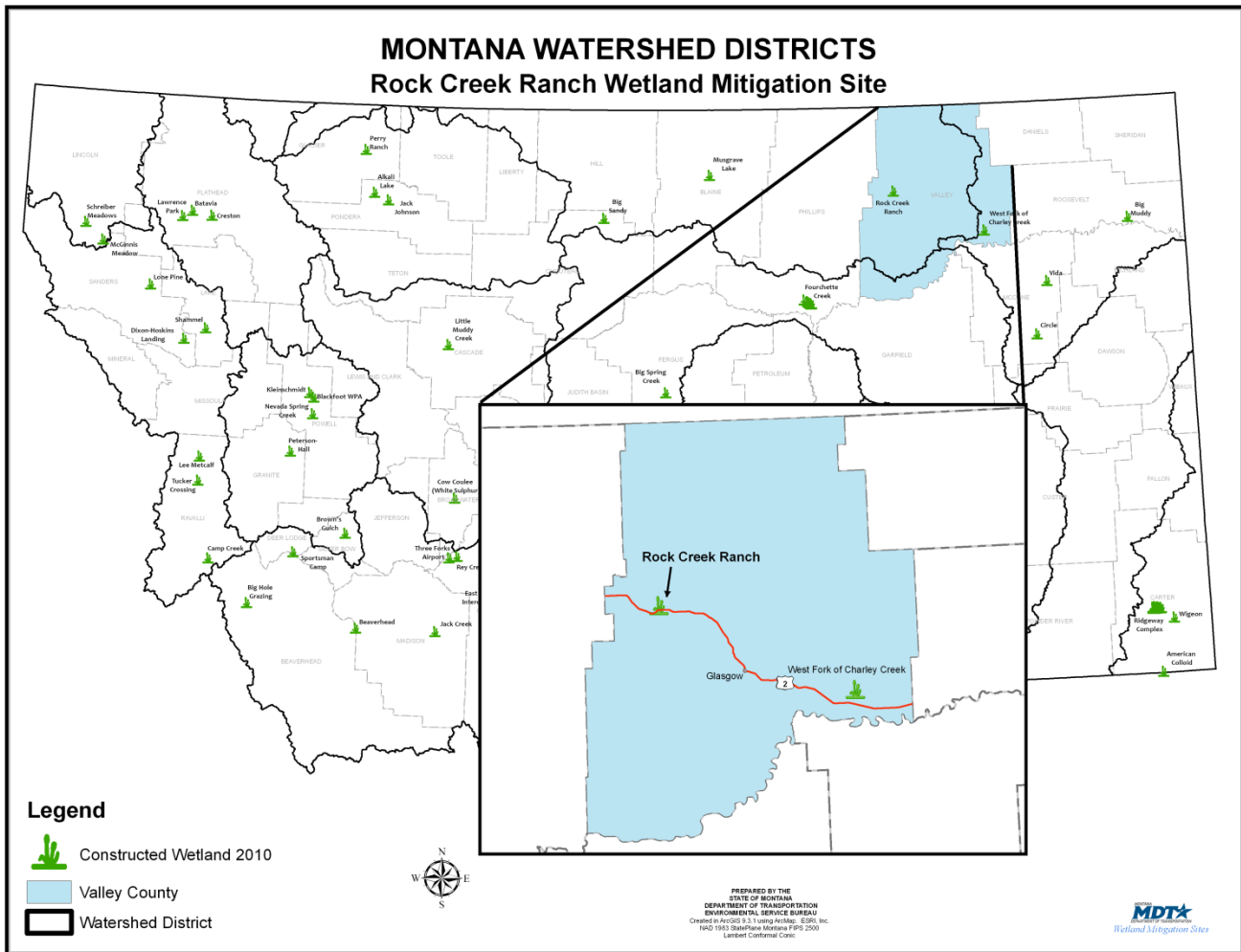


ROCK CREEK RANCH

Watershed # 11-Milk River Basin
Valley County, Montana



LAND OWNERSHIP: PRIVATE

BACKGROUND INFORMATION

The Rock Creek Ranch wetland mitigation site was developed and constructed by PBS&J Consulting and the landowner in the fall of 2004. The site is situated approximately 3 miles east of the town of Hinsdale, to the north of US Highway 2 in Valley County. The Montana Department of Transportation purchased 50 wetland credit acres from the site with the option to acquire additional wetland credits in the future for wetland impacts by transportation projects within Watershed # 11 – Milk River Basin. This MDT project was a part of a much larger cooperative wetland restoration project involving Ducks Unlimited and the Natural Resource Conservation Service’s Wetland Reserve Program to restore approximately 1,500 acres of wetlands on the Rock Creek Ranch. This site is protected by an MDT Wetland Conservation Easement.

The mitigation site is a mix of emergent and submerged aquatic vegetation communities, intermixed with meandering open water areas to diversify habitat for wetland vegetation, waterfowl and other wildlife species. A Montana state listed sensitive plant species of concern by the Montana Natural Heritage Program, Scarlet Ammannia (*Ammannia robusta*) has

been observed as occurring within the site. This rare plant species has only been observed from 3 historical records in Garfield and Phillips County, thus making this site an important habitat for the plant.



Ammannia robusta – Univ. Cal-Berkley photo

WETLAND VEGETATION

Dominant wetland vegetation

Five community types were observed

Type 1- Broad-leaf cattail/Narrow-leaf plantain (*Typha latifolia* / *Alisma gramanium*)

Type 2- Curly dock/ Foxtail barley (*Rumex crispus* / *Hordeum jubatum*)

Type 3- Eastern cottonwood/ willow (*Populus deltoides* / *Salix* spp.)

Type 4- Meadow foxtail (*Alopecurus pratensis*)

Type 5- Curly dock/ Broad-leaf cattail (*Rumex crispus* / *Typha latifolia*)

WETLAND INHABITANTS

FISH	
None	
AMPHIBIAN	
Northern Leopard Frog (<i>Rana pipiens</i>)	Western Chorus Frog (<i>Pseudacris triseriata</i>)
REPTILE	
Plains Garter Snake (<i>Thamnophis radix</i>)	Painted Turtle (<i>Chrysemys picta</i>)
Bolded species were observed in 2009.	
BIRD	
<p>American Avocet (<i>Recurvirostra americana</i>)</p> <p>American Bittern (<i>Botaurus lentiginosus</i>)</p> <p>American Coot (<i>Fulica americana</i>)</p> <p>American Crow (<i>Corvus brachyrhynchos</i>)</p> <p>American White Pelican (<i>Pelecanus erythrorhynchos</i>)</p> <p>Bald Eagle (<i>Haliaeetus leucocephalus</i>)</p> <p>Bank Swallow (<i>Riparia riparia</i>)</p> <p>Barn Swallow (<i>Hirundo rustica</i>)</p> <p>Black-necked Stilt (<i>Himantopus mexicanus</i>)</p> <p>Blue-winged Teal (<i>Anas discors</i>)</p> <p>Brewer's Blackbird (<i>Euphagus cyanocephalus</i>)</p> <p>Brown-headed Cowbird (<i>Molothrus ater</i>)</p> <p>Bullock's Oriole (<i>Icterus bullockii</i>)</p> <p>Canada Goose (<i>Branta canadensis</i>)</p> <p>Common Snipe (<i>Gallinago gallinago</i>)</p> <p>Common Yellowthroat (<i>Geothlypis trichas</i>)</p> <p>Eared Grebe (<i>Podiceps nigricollis</i>)</p> <p>Eastern Kingbird (<i>Tyrannus tyrannus</i>)</p> <p>European Starling (<i>Sturnus vulgaris</i>)</p> <p>Gadwall (<i>Anas strepera</i>)</p> <p>Golden Eagle (<i>Aquila chrysaetos</i>)</p> <p>Hairy Woodpecker (<i>Picoides villosus</i>)</p> <p>Killdeer (<i>Charadrius vociferous</i>)</p> <p>Long-billed Curlew (<i>Numenius americanus</i>)</p> <p>Long-billed Dowitcher (<i>Limnodromus scolopaceus</i>)</p> <p>Mallard (<i>Anas platyrhynchos</i>)</p> <p>Marbled Godwit (<i>Limosa fedoa</i>)</p> <p>Marsh Wren (<i>Cistothorus palustris</i>)</p>	<p>Mourning Dove (<i>Zenaida macroura</i>)</p> <p>Northern Harrier (<i>Circus cyaneus</i>)</p> <p>Northern Pintail (<i>Anas acuta</i>)</p> <p>Northern Rough-winged Swallow (<i>Stelgidopteryx serripennis</i>)</p> <p>Northern Shoveler (<i>Anas clypeata</i>)</p> <p>Redhead (<i>Aythya americana</i>)</p> <p>Red-tailed Hawk (<i>Buteo jamaicensis</i>)</p> <p>Red-winged Blackbird (<i>Agelaius phoeniceus</i>)</p> <p>Ring-necked Pheasant (<i>Phasianus colchicus</i>)</p> <p>Ruddy Duck (<i>Oxyura jamaicensis</i>)</p> <p>Sandhill Crane (<i>Grus Canadensis</i>)</p> <p>Savannah Sparrow (<i>Passerculus sandwichensis</i>)</p> <p>Semipalmated Sandpiper (<i>Calidris pusilla</i>)</p> <p>Sora (<i>Porzana carolina</i>)</p> <p>Swainson's Hawk (<i>Buteo swainsoni</i>)</p> <p>Swamp Sparrow (<i>Melospiza georgiana</i>)</p> <p>Townsend's Warbler (<i>Dendroica townsendi</i>)</p> <p>Tree Swallow (<i>Tachycineta bicolor</i>)</p> <p>Upland Sandpiper (<i>Bartramia longicauda</i>)</p> <p>Vesper Sparrow (<i>Poocetes gramineus</i>)</p> <p>Western Meadowlark (<i>Sturnella neglecta</i>)</p> <p>Western Sandpiper (<i>Calidris mauri</i>)</p> <p>Western Tanager (<i>Piranga ludoviciana</i>)</p> <p>Willet (<i>Catoptrophorus semipalmatus</i>)</p> <p>Willow Flycatcher (<i>Empidonax traillii</i>)</p> <p>Wilson's Phalarope (<i>Phalaropus tricolor</i>)</p> <p>Yellow-headed Blackbird (<i>Xanthocephalus xanthocephalus</i>)</p> <p>Yellow-rumped Warbler (<i>Dendroica coronata</i>)</p>
MAMMAL	
<p>Coyote (<i>Canis latrans</i>)</p> <p>Deer (<i>Odocoileus sp.</i>)</p> <p>Long-tailed Weasel (<i>Mustela frenata</i>)</p> <p>Mink (<i>Mustela vison</i>)</p>	<p>Raccoon (<i>Procyon lotor</i>)</p> <p>Richardson's Ground Squirrel (<i>Spermophilus richardsonii</i>)</p> <p>White-tailed Jack Rabbit (<i>Lepus townsendii</i>)</p>
Bolded species were observed in 2009.	



Long-billed Dowitcher



Sandhill Crane

Rock Creek Ranch



Click the icon below for complete monitoring reports for this site (2005 to 2010)

