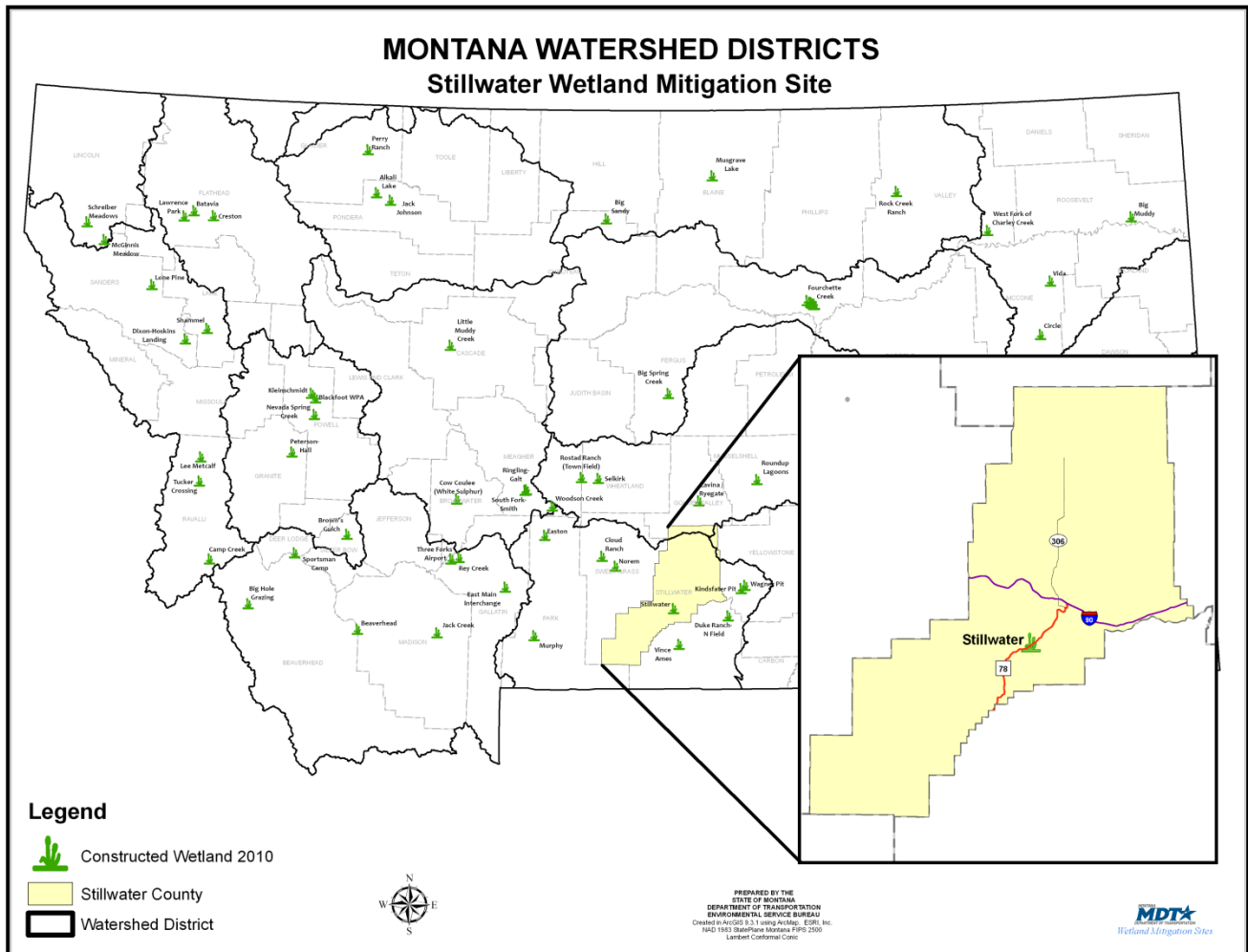


# STILLWATER

Watershed # 13-Upper Yellowstone River Basin  
Stillwater County, Montana



**LAND OWNERSHIP: PRIVATE**

## BACKGROUND INFORMATION

The Stillwater River wetland was constructed in the spring of 1999 to mitigate wetland impacts associated with a proposed Federal Aviation Administration expansion of the Columbus airport, and a proposed MDT highway reconstruction project between Absarokee and Columbus. The site is located in Upper Yellowstone River Basin Watershed (#13) in Stillwater County southwest of the interstate interchange at Columbus. This restoration project provided approximately 9 acres of mitigation credits to mitigate transportation projects in the watershed.

## WETLAND INHABITANTS

<b>REPTILES and AMPHIBIANS</b>	
Painted turtle ( <i>Chrysemys picta</i> )	
Western Chorus Frog ( <i>Pseudacris triseriata</i> )	
<b>BIRDS</b>	
American Goldfinch ( <i>Carduelis tristis</i> )	Killdeer ( <i>Charadrius vociferous</i> )
American Robin ( <i>Turdus migratorius</i> )	Least Flycatcher ( <i>Empidonax minimus</i> )
American Coot ( <i>Fulica americana</i> )	House Wren ( <i>Troglodytes aedon</i> )
Bald Eagle ( <i>Haliaeetus leucocephalus</i> )	Mallard ( <i>Anas platyrhynchos</i> )
Belted Kingfisher ( <i>Ceryle alcyon</i> )	Marsh Wren ( <i>Cistothorus palustris</i> )
Black-capped Chickadee ( <i>Parus atricapillus</i> )	Mourning Dove ( <i>Zenaidura macroura</i> )
Black-headed Grosbeak ( <i>Pheucticus melanocephalus</i> )	Northern Flicker ( <i>Colaptes auratus</i> )
Canada Goose ( <i>Branta canadensis</i> )	Pied-billed Grebe ( <i>Podilymbus podiceps</i> )
Cedar Waxwing ( <i>Bombacilla cedrorum</i> )	Pileated Woodpecker ( <i>Dryocopus pileatus</i> )
Cinnamon Teal ( <i>Anas cyanoptera</i> )	Red-breasted Merganser ( <i>Mergus serrator</i> )
Common Grackle ( <i>Quiscalus quiscula</i> )	Red-winged Blackbird ( <i>Agelaius phoeniceus</i> )
Common Merganser ( <i>Mergus merganser</i> )	Ruddy Duck ( <i>Oxyura jamaicensis</i> )
Common Nighthawk ( <i>Chordeiles minor</i> )	Sandhill Crane ( <i>Grus canadensis</i> )
Common Snipe ( <i>Gallinago gallinago</i> )	Song Sparrow ( <i>Melospiza melodia</i> )
Common Yellowthroat ( <i>Geothlypis trichas</i> )	Sora ( <i>Porzana Carolina</i> )
Double-crested Cormorant ( <i>Phalacrocorax auritus</i> )	Spotted Sandpiper ( <i>Actitis macularia</i> )
Downy Woodpecker ( <i>Picoides villosus</i> )	Tree Swallow ( <i>Tachycineta bicolor</i> )
Eastern Kingbird ( <i>Tyrannus tyrannus</i> )	Turkey Vulture ( <i>Cathartes aura</i> )
European Starling ( <i>Sturnus vulgaris</i> )	Western Bluebird ( <i>Sialis mexicana</i> )
Gray Catbird ( <i>Dumetella carolinensis</i> )	Western Kingbird ( <i>Tyrannus verticalis</i> )
Great Blue Heron ( <i>Ardea herodias</i> )	Western Meadowlark ( <i>Sturnella neglecta</i> )
Great Horned Owl ( <i>Bubo virginianus</i> )	Western Wood Pewee ( <i>Contopus sordidulus</i> )
Greater Yellowlegs ( <i>Tringa melanoleuca</i> )	Willet ( <i>Catoptrophorus semipalmatus</i> )
Green-winged Teal ( <i>Anas crecca</i> )	Wood Duck ( <i>Aix sponsa</i> )
Hairy Woodpecker ( <i>Picoides villosus</i> )	Yellow Warbler ( <i>Dendroica petechia</i> )
	Yellow-rumped Warbler ( <i>Dendroica coronata</i> )
<b>MAMMALS</b>	
Beaver ( <i>Castor canadensis</i> )	
White-tailed Deer ( <i>Odocoileus virginianus</i> )	
Muskrat ( <i>Ondatra zibethica</i> )	
Striped Skunk ( <i>Mephitis mephitis</i> )	
Rabbit ( <i>Lepus spp.</i> )	

<sup>1</sup> **Bolded** species indicate those documented within the analysis area in 2005.



**Common Nighthawk**



**Northern Flicker**

---

## **WETLAND VEGETATION**

### **Dominant wetland vegetation**

*Three community types were observed*

**Type 1-** Broad-leaf cattail (*Typha latifolia*)

**Type 2-** Sedge/Rush/Bulrush (*Carex* spp./*Juncus* spp./*Scirpus* spp)

**Type 3-** Slender wheatgrass/ Kentucky bluegrass (*Agropyron trachycaulus*/*Poa pratensis*)



**Beaked sedge**

---

---

## Stillwater



*Click the icon below for complete monitoring reports for this site (2001 to 2005)*

