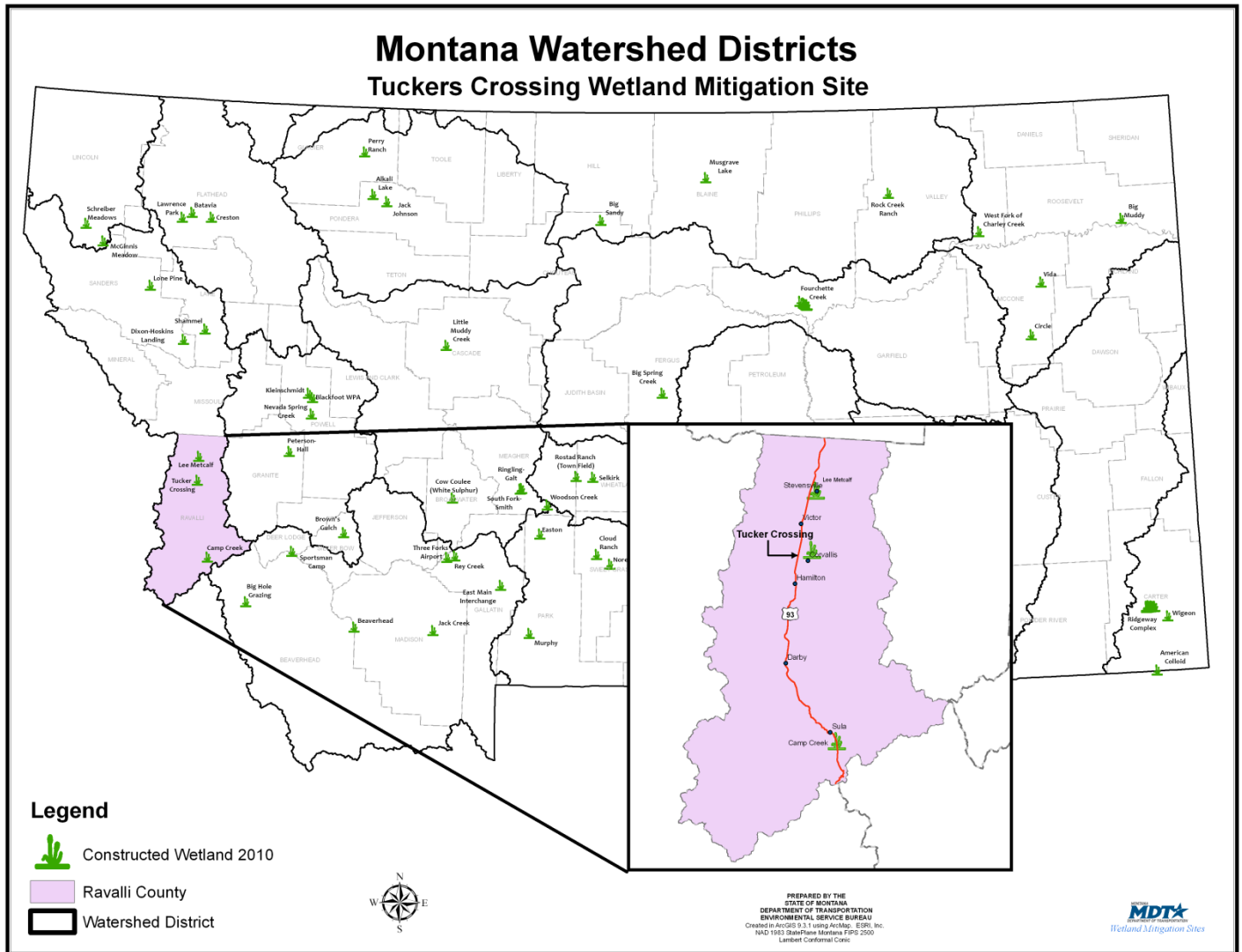


# TUCKER CROSSING

Watershed # 3- Lower Clark Fork River Basin  
Ravalli County, Montana



**LAND OWNERSHIP: PRIVATE**

## BACKGROUND INFORMATION

In 1997, the Montana Department of Transportation (MDT) entered into an agreement with a private landowner to develop wetland mitigation on the Tucker Crossing Ranch in the Bitterroot River Valley near Corvallis, MT. It was constructed as mitigation for wetland impacts associated with improvements within the Watershed # 3 – Lower Clark Fork River Basin. The site is protected through an MDT wetland conservation easement.

The mitigation site is a diverse wetland community of emergent wetlands intermixed with areas of open water, scrub/shrub communities, and wet meadows. It provides habitat to a variety of wildlife species within a rapidly developing area of the Bitterroot Valley. As a result of monitoring MDT has developed 45 acres of wetland credits from the site.

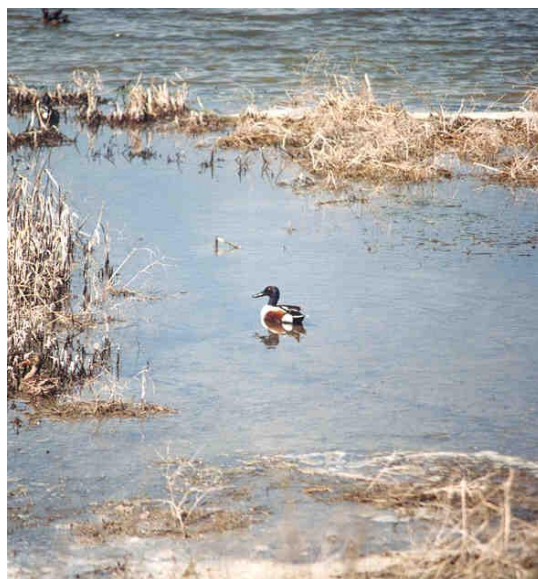
---

**INHABITANTS:**

<b>BIRDS</b>	
American Avocet ( <i>Recurvirostra americana</i> )	Northern Harrier ( <i>Circus cyaneus</i> )
American Coot ( <i>Fulica americana</i> )	Northern Pintail ( <i>Anas acuta</i> )
American Crow ( <i>Corvus brachyrhynchos</i> )	Northern Shoveller ( <i>Anas clypeata</i> )
American Goldfinch ( <i>Carduelis tristis</i> )	Northern Shrike ( <i>Lanius excubitor</i> )
American Kestrel ( <i>Falco sparverius</i> )	Osprey ( <i>Pandion haliaetus</i> )
American Robin ( <i>Turdus americana</i> )	Redhead ( <i>Aythya americana</i> )
American Wigeon ( <i>Anas americana</i> )	Red-necked Grebe ( <i>Podiceps grisegena</i> )
Bald Eagle ( <i>Haliaeetus leucocephalus</i> )	Red-tailed hawk ( <i>Buteo jamaicensis</i> )
Barn Swallow ( <i>Hirundo rustica</i> )	Red-winged Blackbird ( <i>Agelaius phoeniceus</i> )
Barrow's Goldeneye ( <i>Bucephala islandica</i> )	Ring-necked Duck ( <i>Aythya collaris</i> )
Belted Kingfisher ( <i>Megaceryle alcyon</i> )	Ring-necked pheasant ( <i>Phasianus colchicus</i> )
Black-billed Magpie ( <i>Pica americana</i> )	Rough-legged Hawk ( <i>Buteo laagopus</i> )
Blue-winged teal ( <i>Anas discors</i> )	Ruddy Duck ( <i>Oxyura jamaicensis</i> )
Bobolink ( <i>Dolichonyx oryzivorus</i> )	Sandhill Crane ( <i>Grus canadensis</i> )
Brown-headed Cowbird ( <i>Molothrus ater</i> )	Savannah Sparrow ( <i>Passerculus sandwichensis</i> )
Bufflehead ( <i>Bucephala albeola</i> )	Semi-palmated Plover ( <i>Charadrius semipalmatus</i> )
Canada Goose ( <i>Banta canadensis</i> )	Short-eared Owl ( <i>Asio flammeus</i> )
Cedar Waxwing ( <i>Bombycilla cedrorum</i> )	Snow Goose ( <i>Chen caerulescens</i> )
Cinnamon Teal ( <i>Anas cyanoptera</i> )	Song sparrow ( <i>Melospiza melodia</i> )
Common Goldeneye ( <i>Bucephala clangula</i> )	Sora ( <i>Porzana carolina</i> )
Common Merganser ( <i>Mergus merganser</i> )	Spotted Sandpiper ( <i>Actitis macularia</i> )
Common Nighthawk ( <i>Chordeiles minor</i> )	Tree Swallow ( <i>Tachycineta bicolor</i> )
Common Raven ( <i>Corvus corax</i> )	Tundra Swan ( <i>Cygnus columbianus</i> )
Double-crested Comorant ( <i>Phalacrocorax auritus</i> )	Upland Sandpiper ( <i>Bartramia longicauda</i> )
Eastern Kingbird ( <i>Tyrannus tyrannus</i> )	Vesper Sparrow ( <i>Pooecetes gramineus</i> )
Eared Grebe ( <i>Podiceps nigricollis</i> )	Violet-green Swallow ( <i>Tachycineta thalassina</i> )
European Starling ( <i>Sturnus vulgaris</i> )	Western Meadowlark ( <i>Sturnella neglecta</i> )
Gadwall ( <i>Anas strepera</i> )	White-faced Ibis ( <i>Plegadis chihi</i> )
Great Blue Heron ( <i>Ardea herodias</i> )	Willet ( <i>Tringa semipalmata</i> )
Great Horned Owl ( <i>Bubo virginianus</i> )	Wilson's phalarope ( <i>Phalaropus tricolor</i> )
Green-winged Teal ( <i>Anas crecca</i> )	Wilson's Snipe ( <i>Gallinago delicata</i> )
Hooded Merganser ( <i>Lophodytes cucullatus</i> )	Wood Duck ( <i>Aix sponsa</i> )
Killdeer ( <i>Charadrius vociferous</i> )	Yellow-headed Blackbird ( <i>Xanthocephalus xanthocephalus</i> )
Lesser Yellowlegs ( <i>Tringa flavipes</i> )	Yellow Warbler ( <i>Dendroica petechia</i> )
Mallard ( <i>Anas platyrhynchos</i> )	
Marsh Wren ( <i>Cistothorus palustris</i> )	
Mountain Bluebird ( <i>Sialia currocoides</i> )	
Mourning Dove ( <i>Zenaida macroura</i> )	
<b>MAMMALS</b>	
Beaver ( <i>Castor canadensis</i> )	Northern Pocket Gopher ( <i>Thomomys talpoides</i> )
Big Brown Bat ( <i>Eptesicus fuscus</i> )	Raccoon ( <i>Procyon lotor</i> )
Coyote ( <i>Canis latrans</i> )	

Deer Mouse ( <i>Peromyscus maniculatus</i> ) Eastern Cottontail ( <i>Sylvilagus floridanus</i> ) Elk ( <i>Cervus canadensis</i> ) Feral Cat ( <i>Felis domestica</i> ) Little Brown Bat ( <i>Myotis lucifugus</i> ) Meadow Vole ( <i>Microtus pennsylvanicus</i> ) Mule Deer ( <i>Odocoileus hemionus</i> ) Muskrat ( <i>Ondatra zibethicus</i> )	Red-backed Vole ( <i>Clethrionomys gapperi</i> ) Red Fox ( <i>Vulpes vulpes</i> ) Shrew Species ( <i>Sorex sp.</i> ) Short-tailed Weasel ( <i>Mustela ermine</i> ) Striped Skunk ( <i>Mephitis mephitis</i> ) White-tailed Deer ( <i>Odocoileus virginianus</i> ) Yellow-bellied Marmot – ( <i>Marmota flaviventris</i> )
<b>HERPETILES</b>  Columbia Spotted Frog ( <i>Rana luteiventris</i> ) Painted Turtle ( <i>Chrysemys picta</i> )	Western Chorus Frog ( <i>Pseudacris triseriata</i> ) Western Garter Snake ( <i>Thamnophis elegans</i> ) Western Toad ( <i>Bufo boreas</i> )

## Tucker Crossing



Northern Shoveller



Short-eared Owl



*Click the icon below for complete monitoring reports for this site (1997 to 2000)*