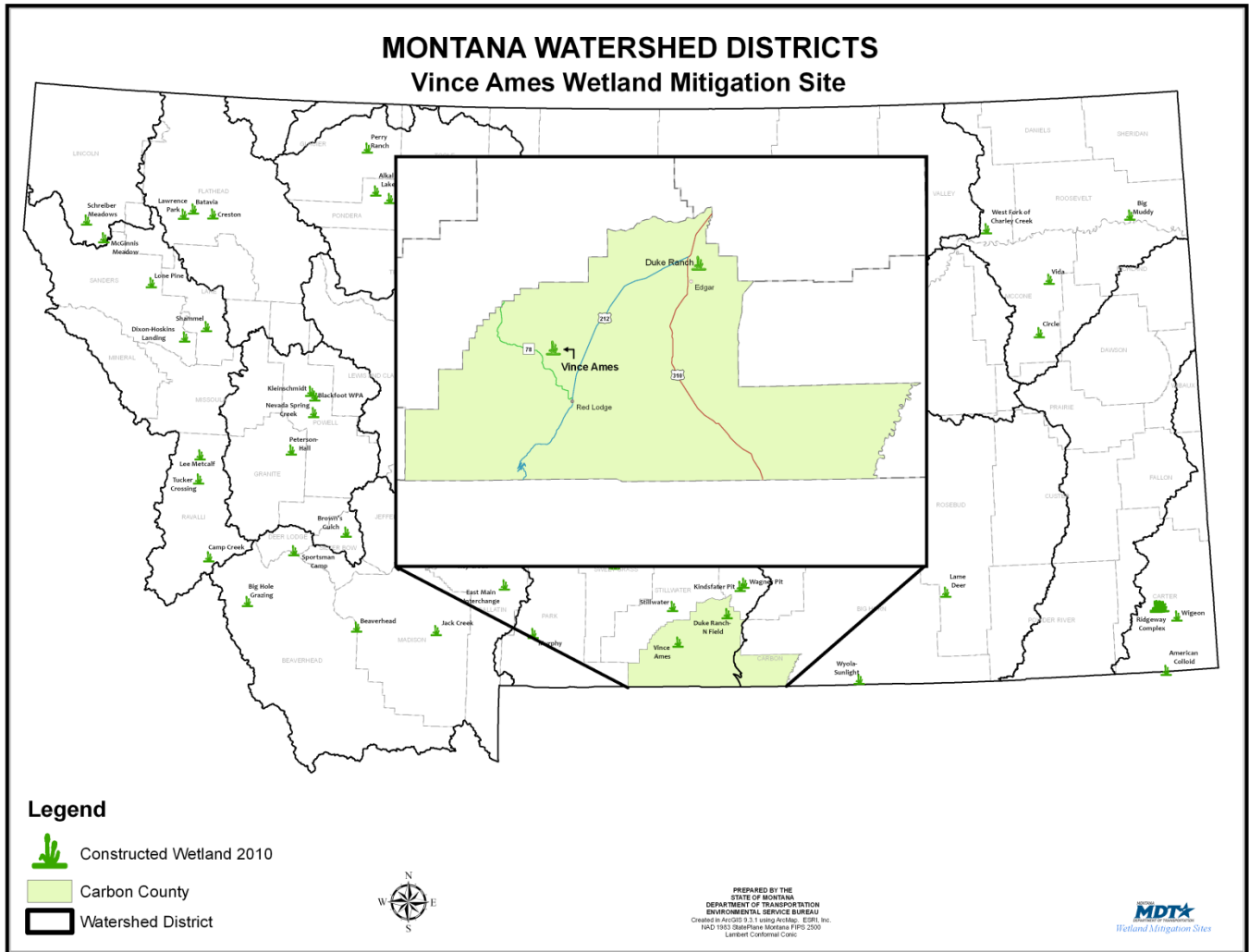


# VINCE AMES

Watershed # 13-Upper Yellowstone River Basin  
Carbon County, Montana



**LAND OWNERSHIP: PRIVATE**

## BACKGROUND INFORMATION

The Montana Department of Transportation's (MDT) Vince Ames Wetland Site was developed in cooperation with a private landowner to mitigate impacts related to transportation projects within the vicinity of Red Lodge in Carbon County, Montana. It is protected in perpetuity through an MDT wetland conservation easement. The wetland mitigation site was constructed in two phases in 1992 and 1994 and consists of a series of four shallow and deep water impoundments, connected by relic channels of Red Lodge Creek that provides a wide range of habitat for wildlife in the area. It provides a diverse wetland community intermixed with areas of open water containing submerged/floating aquatic plants, shallow water emergent communities, wet meadows, and a mix of scrub/shrub and forested riparian areas between the various wetland impoundments.

The Vince Ames Wetlands Mitigation site was designed to provide MDT with approximately 9 wetland credit acres with the possibility of additional wetlands developing within the site over time. As of the Final 2001 Vince Ames Monitoring Report, approximately 15 acres of aquatic habitat had developed within the site.

## WETLAND INHABITANTS

### BIRDS

American Avocet ( <i>Recurvirostra americana</i> )	Lazuli Bunting ( <i>Passerina amoena</i> )
American Coot ( <i>Fulica americana</i> )	Long-billed Curlew ( <i>Numenius americanus</i> )
American Crow ( <i>Corvus brachyrhynchos</i> )	Mallard ( <i>Anas platyrhynchos</i> )
American Dipper ( <i>Cinclus mexicanus</i> )	Marbled Godwit ( <i>Limosa fedoa</i> )
American Goldfinch ( <i>Carduelis tristis</i> )	Marsh Wren ( <i>Cistothorus palustris</i> )
American Kestrel ( <i>Falco sparverius</i> )	Mountain Bluebird ( <i>Sialia currocoides</i> )
American Redstart ( <i>Setophaga ruticilla</i> )	Mountain Chickadee ( <i>Poecile gambeli</i> )
American Robin ( <i>Turdus americana</i> )	Mourning Dove ( <i>Zenaida macroura</i> )
American Wigeon ( <i>Anas americana</i> )	Northern Flicker ( <i>Colaptes auratus</i> )
Audubon's Warbler ( <i>Dendroica coronata auduboni</i> )	Northern Harrier ( <i>Circus cyaneus</i> )
Bald Eagle ( <i>Haliaeetus leucocephalus</i> )	Northern Oriole ( <i>Icterus galbula</i> )
Barn Swallow ( <i>Hirundo rustica</i> )	Northern Pintail ( <i>Anas acuta</i> )
Barrow's Goldeneye ( <i>Bucephala islandica</i> )	Northern Shoveller ( <i>Anas clypeata</i> )
Belted Kingfisher ( <i>Megaceryle alcyon</i> )	Northern Shrike ( <i>Lanius excubitor</i> )
Black-billed Magpie ( <i>Pica americana</i> )	Osprey ( <i>Pandion haliaetus</i> )
Black-capped Chickadee ( <i>Poecile atricapillus</i> )	Pied-billed Grebe ( <i>Podilymbus podiceps</i> )
Black-crowned Night Heron ( <i>Nycticorax nycticorax</i> )	Purple Finch ( <i>Carpodacus purpureus</i> )
Black-headed Grosbeak ( <i>Pheucticus melanocephalus</i> )	Red-breasted Nuthatch ( <i>Sitta canadensis</i> )
Blue-winged teal ( <i>Anas discors</i> )	Redhead ( <i>Aythya americana</i> )
Bobolink ( <i>Dolichonyx oryzivorus</i> )	Red-necked Grebe ( <i>Podiceps grisegena</i> )
Bohemian Waxwing ( <i>Bombycilla garrulous</i> )	Red-tailed hawk ( <i>Buteo jamaicensis</i> )
Bonaparte's Gull ( <i>Chroicocephalus philadelphia</i> )	Red-winged Blackbird ( <i>Agelaius phoeniceus</i> )
Brewer's Blackbird ( <i>Euphagus cyanocephalus</i> )	Ring-necked Duck ( <i>Aythya collaris</i> )
Brown-headed Cowbird ( <i>Molothrus ater</i> )	Ring-necked pheasant ( <i>Phasianus colchicus</i> )
Bufflehead ( <i>Bucephala albeola</i> )	Ruddy Duck ( <i>Oxyura jamaicensis</i> )
Canada Goose ( <i>Banta canadensis</i> )	Ruffed Grouse ( <i>Bonasa umbellus</i> )
Cedar Waxwing ( <i>Bombycilla cedrorum</i> )	Rufous Hummingbird ( <i>Selasphorus rufus</i> )
Cinnamon Teal ( <i>Anas cyanoptera</i> )	Sandhill Crane ( <i>Grus canadensis</i> )
Cliff Swallow ( <i>Petrochelidon pyrrhonota</i> )	Savannah Sparrow ( <i>Passerculus sandwichensis</i> )
Common Goldeneye ( <i>Bucephala clangula</i> )	Semi-palmated Plover ( <i>Charadrius semipalmatus</i> )
Common Grackle ( <i>Quiscalus quiscula</i> )	Sharp-shinned hawk ( <i>Accipiter striatus</i> )
Common Merganser ( <i>Mergus merganser</i> )	Short-eared Owl ( <i>Asio flammeus</i> )
Common Nighthawk ( <i>Chordeiles minor</i> )	Snow Goose ( <i>Chen caerulescens</i> )
Common Raven ( <i>Corvus corax</i> )	Song sparrow ( <i>Melospiza melodia</i> )
Common Yellowthroat ( <i>Geothlypis trichas</i> )	Sora ( <i>Porzana carolina</i> )
	Spotted Sandpiper ( <i>Actitis macularia</i> )
	Spotted Towhee ( <i>Pipilio maculatus</i> )
	Swainson's Hawk ( <i>Buteo swainsoni</i> )

<p>Dark-eyed Junco (<i>Junco hyemalis montanus</i>)  Double-crested Cormorant (<i>Phalacrocorax auritus</i>)  Downy Woodpecker (<i>Picoides pubescens</i>)  Eastern Kingbird (<i>Tyrannus tyrannus</i>)  Eared Grebe (<i>Podiceps nigricollis</i>)  European Starling (<i>Sturnus vulgaris</i>)  Ferruginous Hawk (<i>Buteo regalis</i>)  Franklin's Gull (<i>Leucophaeus pipixcan</i>)  Gadwall (<i>Anas strepera</i>)  Golden Eagle (<i>Aquila chrysaetos</i>)  Grasshopper Sparrow (<i>Ammodramus savannarum</i>)  Gray Catbird (<i>Dumetella carolinensis</i>)  Gray Partridge (<i>Perdix perdix</i>)  Great Blue Heron (<i>Ardea herodias</i>)  Great Horned Owl (<i>Bubo virginianus</i>)  Green-winged Teal (<i>Anas crecca</i>)  Hairy Woodpecker (<i>Picoides villosus</i>)  Hooded Merganser (<i>Lophodytes cucullatus</i>)  Horned Lark (<i>Eremophila alpestris</i>)  House Wren (<i>Troglodytes aedon</i>)  Killdeer (<i>Charadrius vociferous</i>)</p>	<p>Tree Swallow (<i>Tachycineta bicolor</i>)  Trumpeter Swan (<i>Cygnus buccinator</i>)  Tundra Swan (<i>Cygnus columbianus</i>)  Turkey (<i>Meleagris gallopavo</i>)  Turkey Vulture (<i>Cathartes aura</i>)  Vesper Sparrow (<i>Pooecetes gramineus</i>)  Violet-green Swallow (<i>Tachycineta thalassina</i>)  Western Grebe (<i>Aechmophorus occidentalis</i>)  Western Meadowlark (<i>Sturnella neglecta</i>)  Western Tanager (<i>Piranga ludoviciana</i>)  Wilson's Phalarope (<i>Phalaropus tricolor</i>)  Wilson's Snipe (<i>Gallinago delicata</i>)  Wilson's Warbler (<i>Wilsonia pusilla</i>)  Wood Duck (<i>Aix sponsa</i>)  Yellow-bellied Sapsucker (<i>Sphyrapicus varius</i>)  Yellow-headed Blackbird (<i>Xanthocephalus xanthocephalus</i>)  Yellow Warbler (<i>Dendroica petechia</i>)</p>
<p><b>MAMMALS</b></p> <p>Beaver (<i>Castor canadensis</i>)  Big Brown Bat (<i>Eptesicus fuscus</i>)  Coyote (<i>Canis latrans</i>)  Deer Mouse (<i>Peromyscus maniculatus</i>)  Eastern Cottontail (<i>Sylvilagus floridanus</i>)  Elk (<i>Cervus canadensis</i>)  Feral Cat (<i>Felis domestica</i>)  Little Brown Bat (<i>Myotis lucifugus</i>)  Meadow Vole (<i>Microtus pennsylvanicus</i>)</p>	<p>Moose (<i>Alces americanus</i>)  Mule Deer (<i>Odocoileus hemionus</i>)  Muskrat (<i>Ondatra zibethicus</i>)  Northern Pocket Gopher (<i>Thomomys talpoides</i>)  Raccoon (<i>Procyon lotor</i>)  Shrew Species (<i>Sorex sp.</i>)  Short-tailed Weasel (<i>Mustela ermine</i>)  Striped Skunk (<i>Mephitis mephitis</i>)  White-tailed Deer (<i>Odocoileus virginianus</i>)</p>
<p><b>HERPETILES</b></p> <p>Columbia Spotted Frog (<i>Rana luteiventris</i>)</p>	<p>Western Garter Snake (<i>Thamnophis elegans</i>)  Woodhouse's Toad (<i>Bufo woodhousii</i>)</p>



**Fly Catcher**



**Tree Swallow**



**Moose calf**

---

## **WETLAND VEGETATION**

### **Dominant wetland vegetation**

*Two community types were observed*

**Type 1-** Meadow foxtail/ Smooth broome (*Alopecurus pratensis/Bromus inermis*)

**Type 2-** Willow/Redtop (*Salix spp./Agrostis alba*)



**Willow (*Salix exigua*-Sandbar willow)**

---

## Vince Ames



*Click the icon below for complete monitoring reports for this site (2001)*