

SYSTEM DESIGNATIONS

- NHS Interstate
- NHS Non-Interstate
- Primary
- Secondary
- Urban
- State Maintained
- Off System
- Alley

ROUTE SURFACE TYPE

- Paved
- Gravel
- Unsurfaced

ROUTE SIGNING

- Interstate Highway
- U.S. Highway
- Montana Route
- Secondary Route

BOUNDARIES

- County Line
- City Boundary
- National Park Service
- Reservation
- National Forest Service
- State Park
- US Fish Wildlife Service

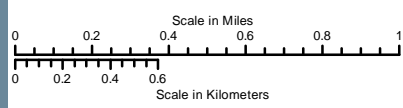
OTHER SYMBOLS

- Stream
- Canal or Ditch
- Water
- Reference Marker
- Railroad
- Public Airport
- Bridge
- Parking Area
- Rest Area: Year-Round/Seasonal

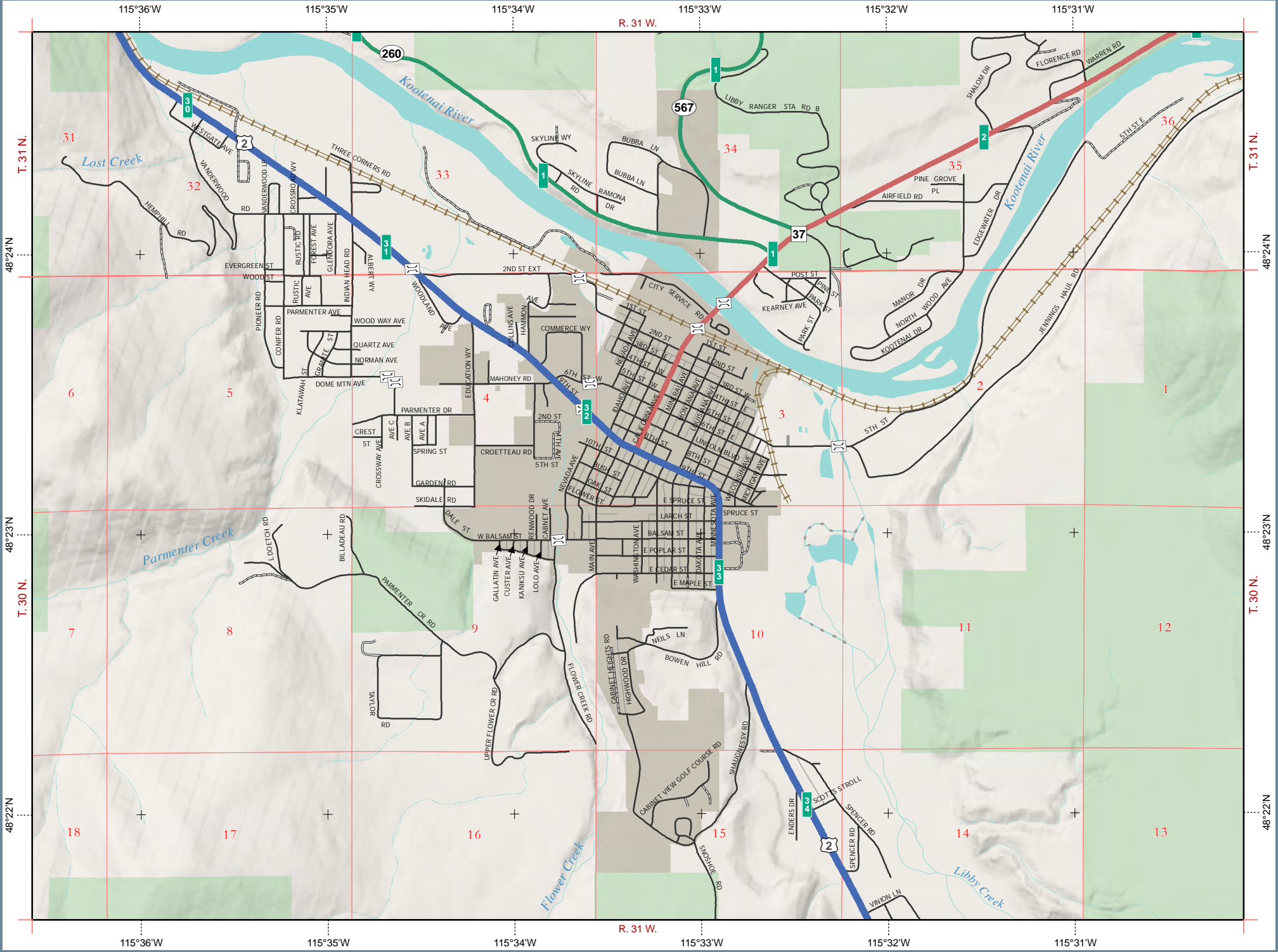
City Location



PREPARED BY THE
STATE OF MONTANA
DEPARTMENT OF TRANSPORTATION
ROAD INVENTORY AND MAPPING SECTION



NAD 1983 State Plane Montana FIPS 2500
Lambert Conformal Conic



T. 31 N.

48°24 N

48°23 N

T. 30 N.

48°22 N