

SYSTEM DESIGNATIONS

- NHS Interstate
- NHS Non-Interstate
- Primary
- Secondary
- Urban
- State Maintained
- Off System
- Alley

ROUTE SURFACE TYPE

- Paved
- Unpaved

ROUTE SIGNING

- Interstate Highway
- U.S. Highway
- Montana Route
- Route

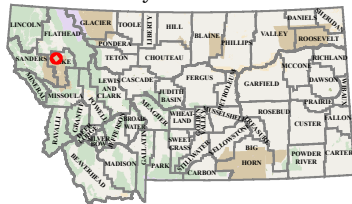
BOUNDARIES

- County Line
- City Boundary
- National Park Service
- Reservation
- National Forest Service
- State Park
- US Fish Wildlife Service

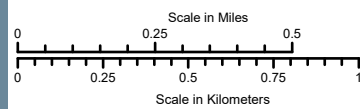
OTHER SYMBOLS

- Stream
- Canal or Ditch
- Water
- Reference Marker
- Railroad
- Public Airport
- Bridge
- Parking Area
- Rest Area: Year-Round/Seasonal

City Location



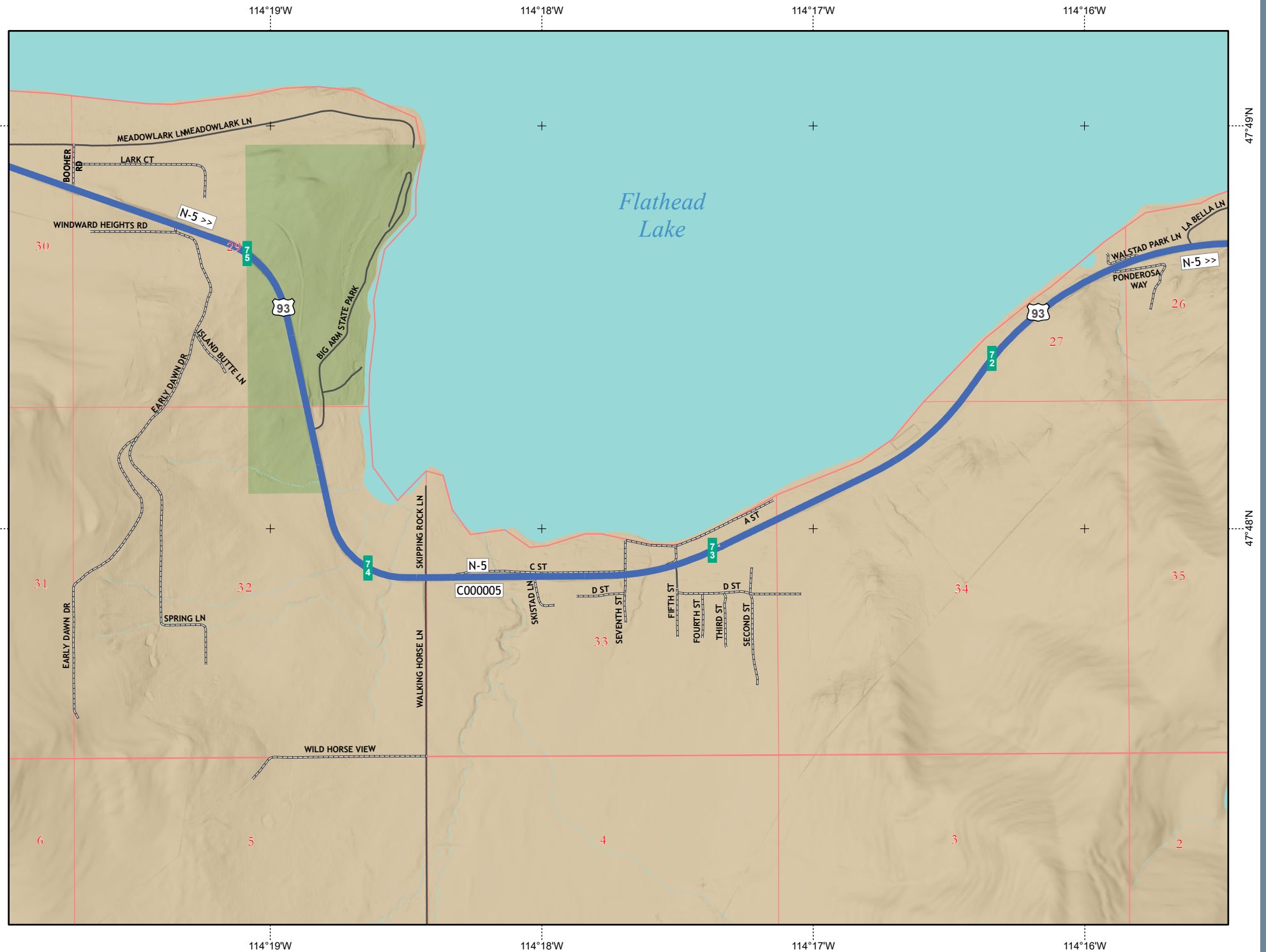
PREPARED BY THE  
STATE OF MONTANA  
DEPARTMENT OF TRANSPORTATION  
GEOSPATIAL INFORMATION SECTION



NAD 1983 State Plane Montana FIPS 2500  
Lambert Conformal Conic



COPYRIGHT © 2024 MONTANA DEPARTMENT OF TRANSPORTATION



BIG  
ARM

UNINC

123