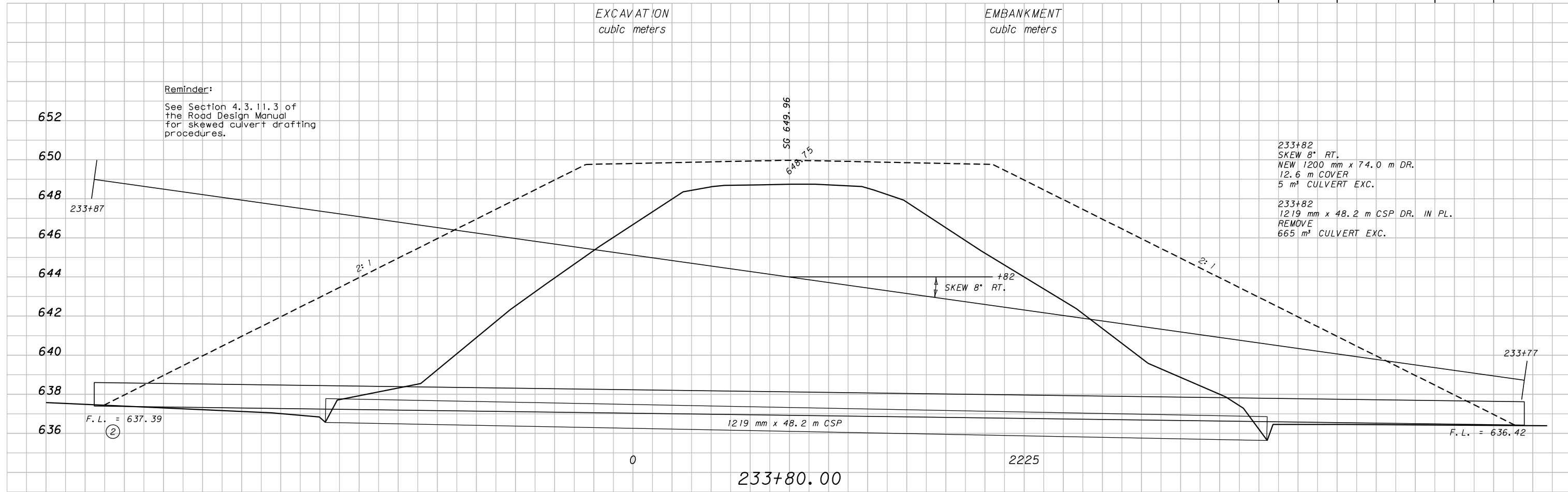
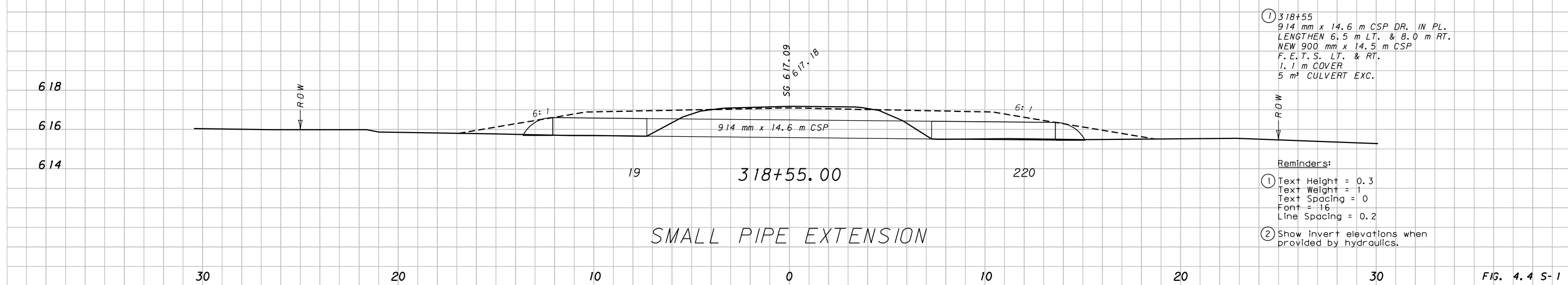


STATE	PROJECT NO.	SHEET NO.
MONTANA	metric	1

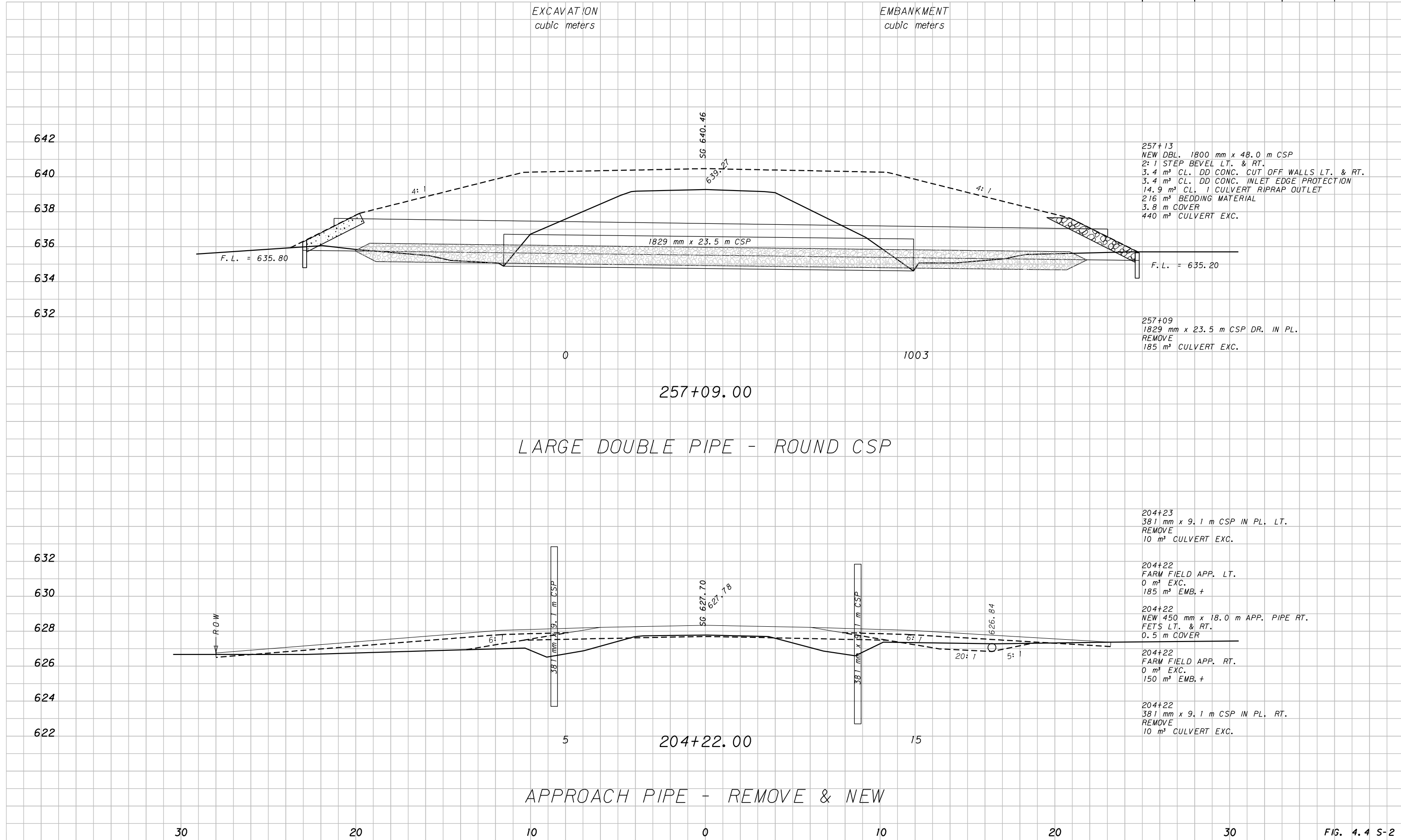


SMALL PIPE - REMOVE & NEW



SMALL PIPE EXTENSION

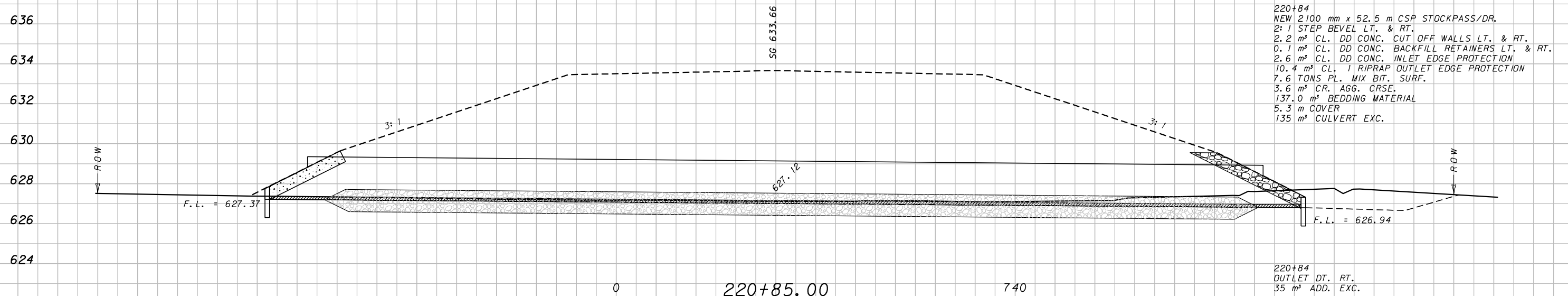
STATE	PROJECT NO.	SHEET NO.
MONTANA	metric	2



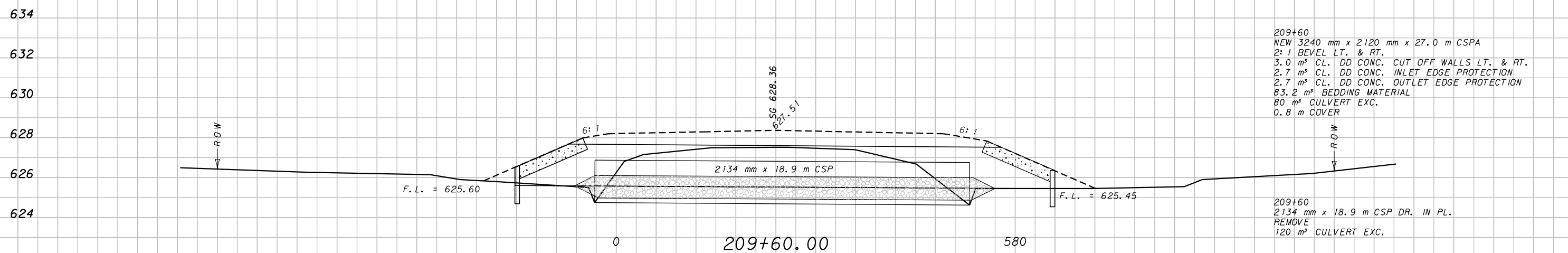
STATE	PROJECT NO.	SHEET NO.
MONTANA	metric	3

EXCAVATION
cubic meters

EMBANKMENT
cubic meters

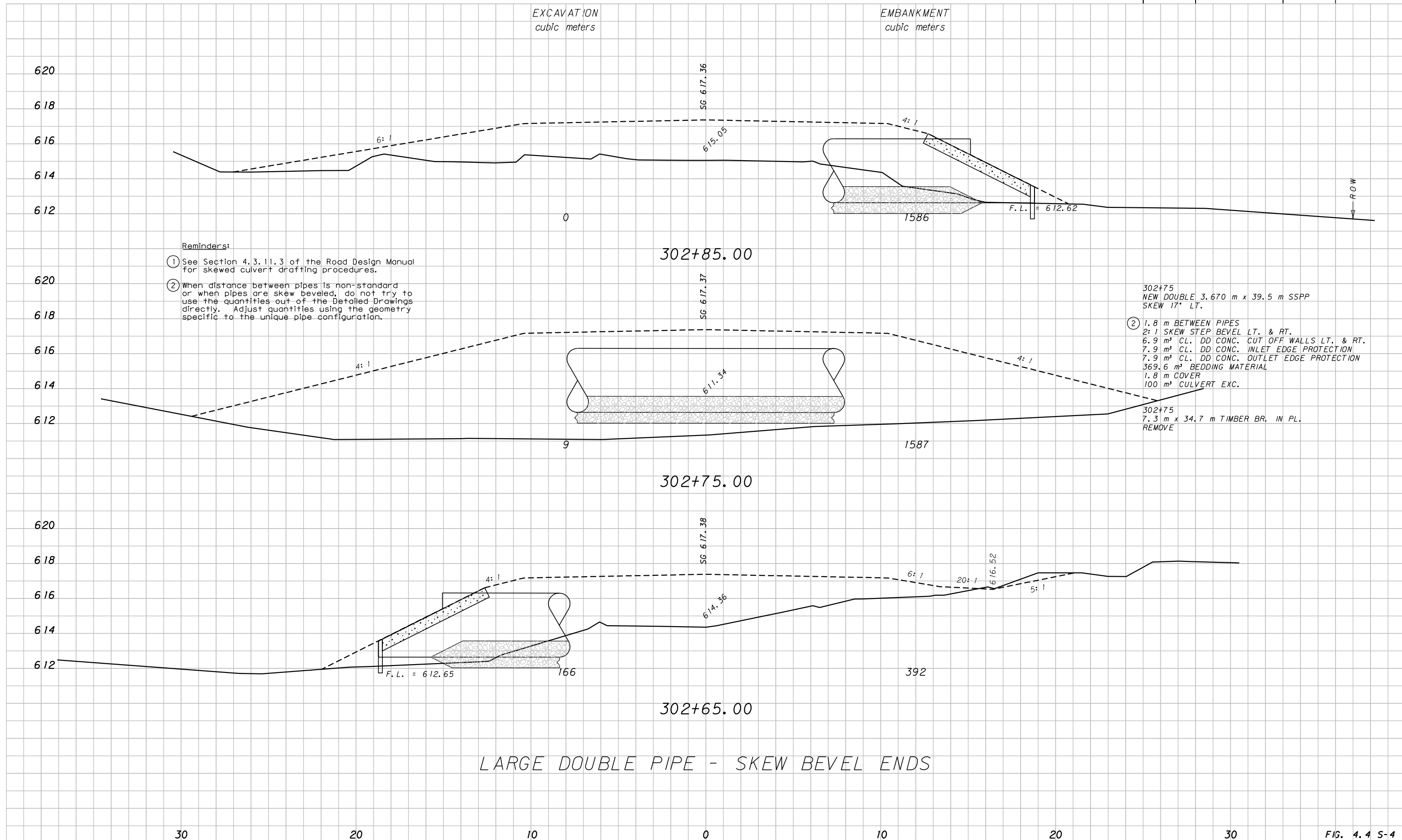


STOCKPASS / DRAIN



LARGE SINGLE PIPE - CSP ARCH

STATE	PROJECT NO.	SHEET NO.
MONTANA	metric	4

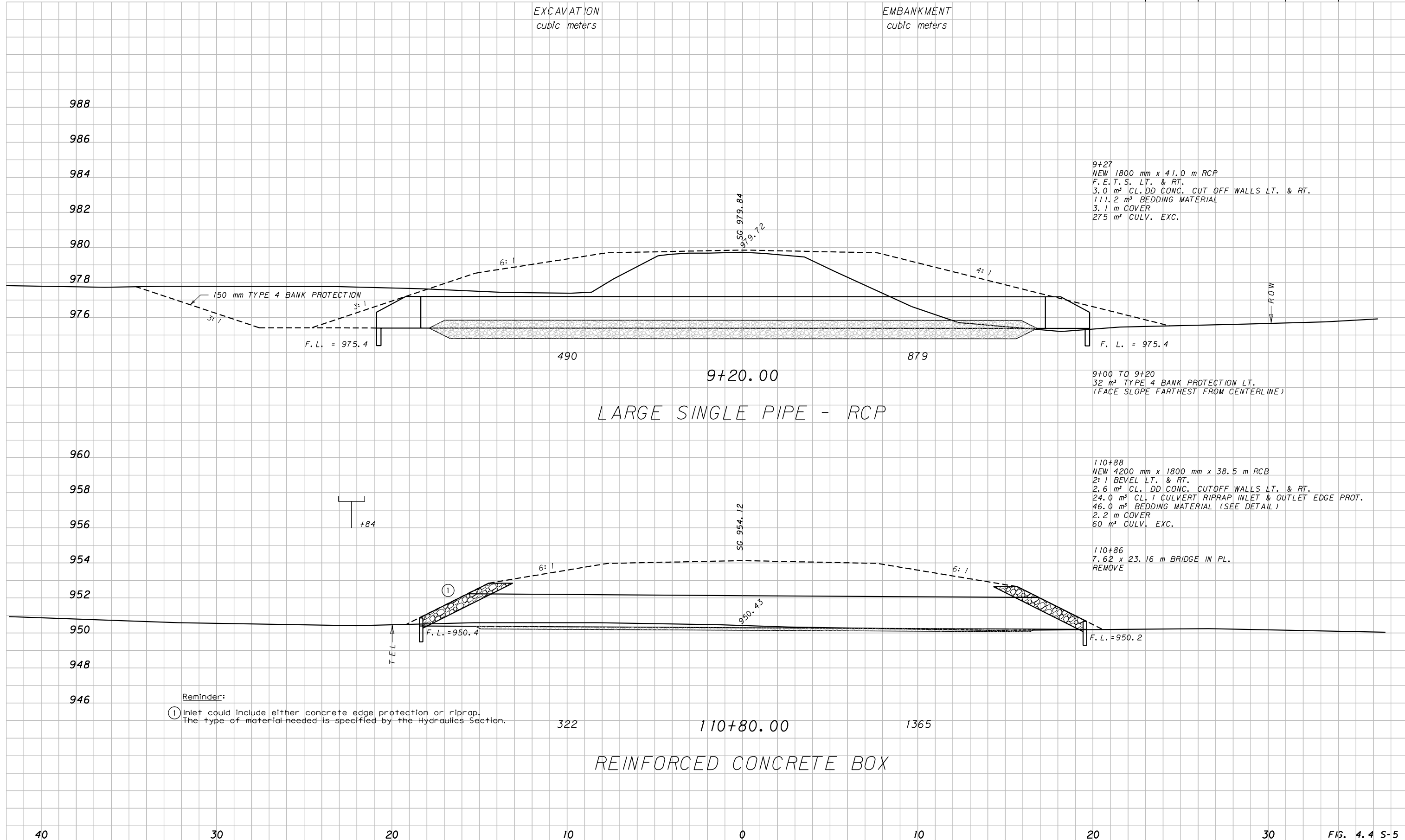


- Reminders:
- ① See Section 4.3.11.3 of the Road Design Manual for skewed culvert drafting procedures.
 - ② When distance between pipes is non-standard or when pipes are skew beveled, do not try to use the quantities out of the Detailed Drawings directly. Adjust quantities using the geometry specific to the unique pipe configuration.

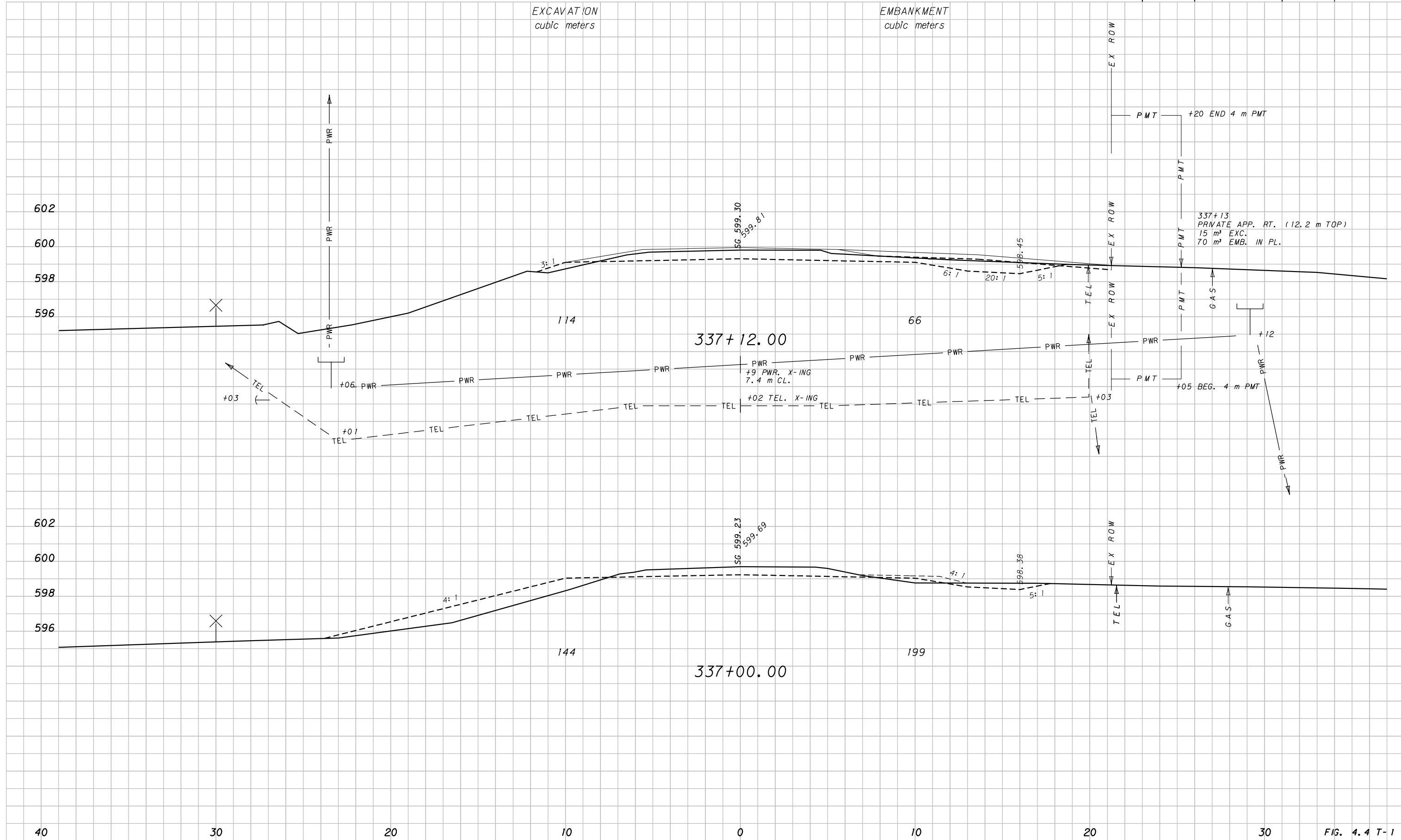
- 302+75
NEW DOUBLE 3.670 m x 39.5 m SSPP
SKEW 17° LT.
- ② 1.8 m BETWEEN PIPES
 - 2:1 SKEW STEP BEVEL LT. & RT.
 - 6.9 m³ CL. DD CONC. CUT OFF WALLS LT. & RT.
 - 7.9 m³ CL. DD CONC. INLET EDGE PROTECTION
 - 7.9 m³ CL. DD CONC. OUTLET EDGE PROTECTION
 - 369.6 m³ BEDDING MATERIAL
 - 1.8 m COVER
 - 100 m³ CULVERT EXC.
- 302+75
7.3 m x 34.7 m TIMBER BR. IN PL.
REMOVE

LARGE DOUBLE PIPE - SKEW BEVEL ENDS

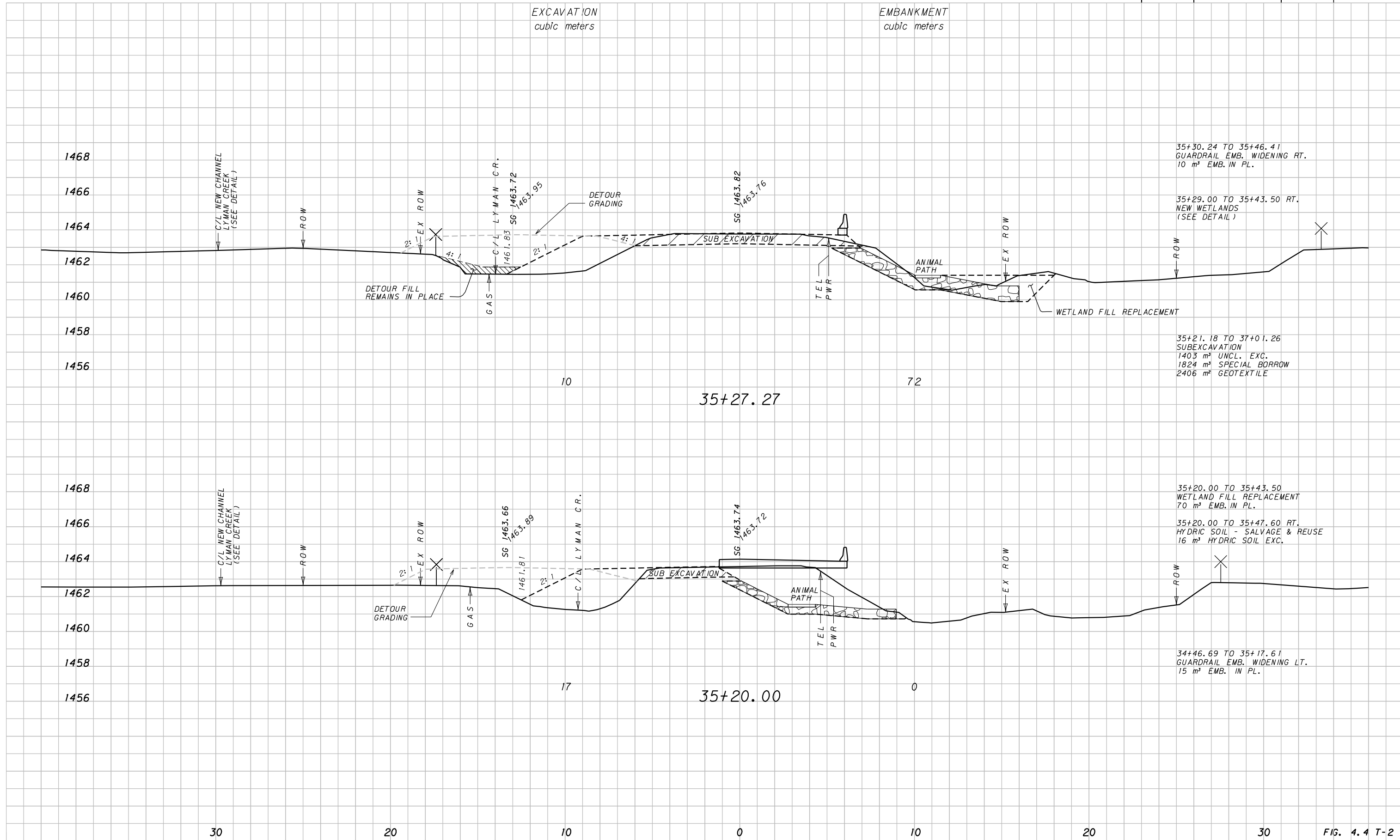
STATE	PROJECT NO.	SHEET NO.
MONTANA	metric	5



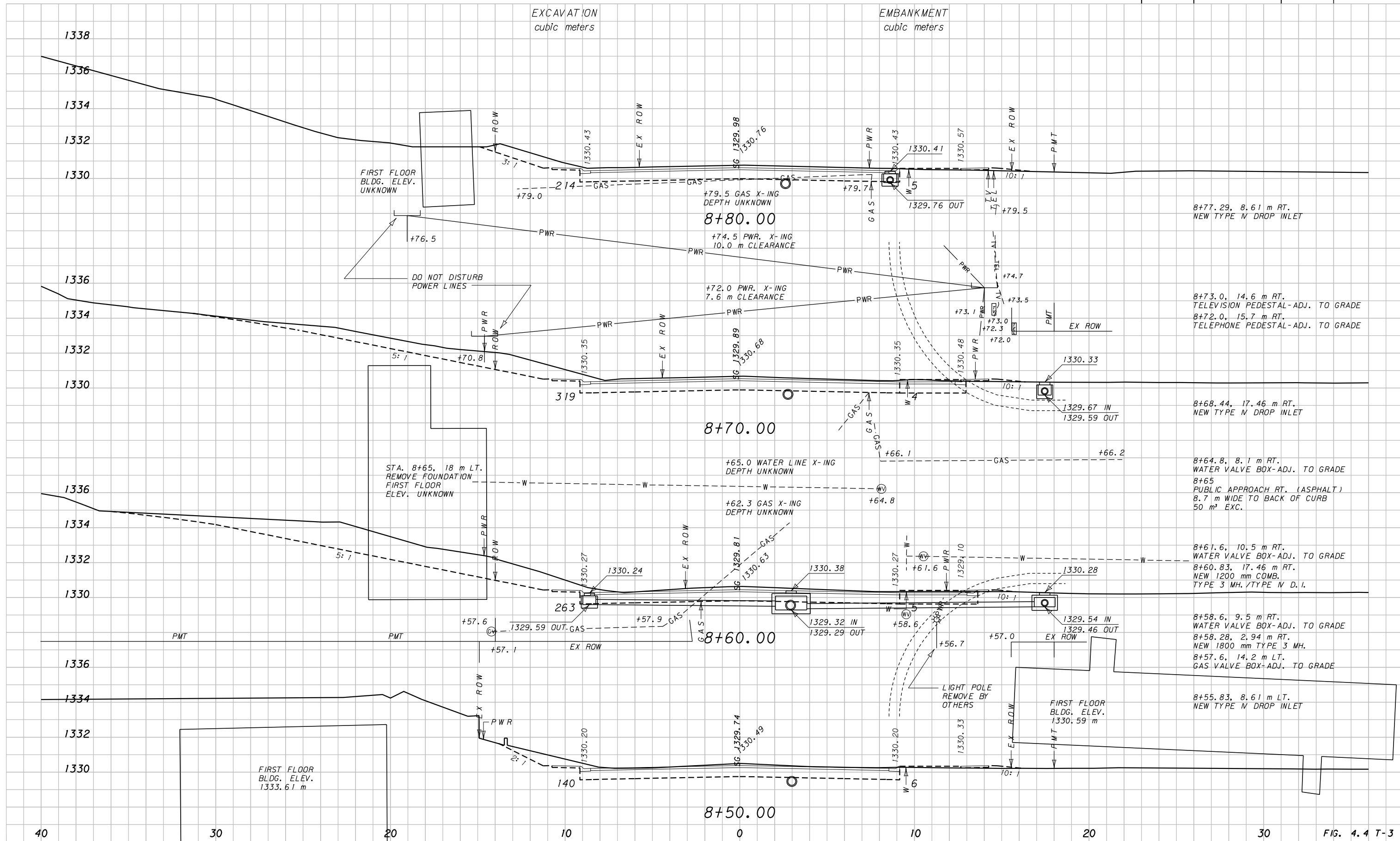
STATE	PROJECT NO.	SHEET NO.
MONTANA	metric	6



STATE	PROJECT NO.	SHEET NO.
MONTANA	metric	7



STATE	PROJECT NO.	SHEET NO.
MONTANA	metric	8



STATE	PROJECT NO.	SHEET NO.
MONTANA	metric	9

