
MONTANA DEPARTMENT OF TRANSPORTATION
WETLAND MITIGATION MONITORING REPORT: YEAR 2008

Big Hole Grazing Association
Beaverhead County, Montana



Prepared for:

MONTANA DEPARTMENT OF TRANSPORTATION
2701 Prospect Ave
Helena, MT 59620-1001

Prepared by:

POST, BUCKLEY, SCHUH, AND JERNIGAN
801 North Last Chance Gulch, Suite 101
Helena, MT 59601-3360

December 2008

PBS&J Project No: 0B4308801.03.02



MONTANA DEPARTMENT OF TRANSPORTATION

WETLAND MITIGATION MONITORING REPORT

YEAR 2008

*Big Hole Grazing Association
Beaverhead County, Montana*

Prepared for:

MONTANA DEPARTMENT OF TRANSPORTATION
2701 Prospect Ave
Helena, MT 59620-1001

Prepared by:

POST, BUCKLEY, SCHUH, AND JERNIGAN
801 North Last Chance Gulch, Suite 101
Helena, MT 59601-3360

December 2008

PBS&J Project No: 0B4308801.03.02

"MDT attempts to provide accommodations for any known disability that may interfere with a person participating in any service, program, or activity of the Department of Transportation. Alternative accessible formats of this information will be provided upon request. For further information, call 406-444-7228 or TTY (800-335-7592) or by calling Montana Relay at 711."



TABLE OF CONTENTS

1.0 INTRODUCTION.....	1
2.0 METHODS.....	3
2.1 Monitoring Dates and Activities.....	3
2.2 Hydrology	3
2.3 Vegetation.....	3
2.4 Soils.....	4
2.5 Wetland Delineation	4
2.6 Mammals, Reptiles, and Amphibians	4
2.7 Birds.....	4
2.8 Macroinvertebrates	5
2.9 Functional Assessment.....	5
2.10 Photographs.....	5
2.11 GPS Data.....	5
2.12 Maintenance Needs.....	5
3.0 RESULTS	5
3.1 Hydrology	5
3.2 Vegetation.....	7
3.3 Soils.....	10
3.4 Wetland Delineation	10
3.5 Wildlife	11
3.6 Macroinvertebrates	12
3.7 Functional Assessment.....	12
3.8 Photographs.....	13
3.9 Maintenance Needs/Recommendations	13
3.10 Current Credit Summary.....	13
4.0 REFERENCES.....	14

TABLES

Table 1	<i>2008 vegetation species list for the Big Hole Grazing Association Wetland Mitigation Site.</i>
Table 2	<i>2008 data summary for Transect 1.</i>
Table 3	<i>Acreages for each 2008 wetland community within the Big Hole Grazing Association Wetland Mitigation Site.</i>
Table 4	<i>Fish and wildlife species observed within the Big Hole Grazing Association Wetland Mitigation Site in 2008.</i>
Table 5	<i>Summary of 2008 wetland function/value ratings and functional points at the Big Hole Grazing Association Wetland Mitigation Site.</i>

CHARTS

Chart 1	<i>Average groundwater levels during the growing season across the Big Hole Grazing Association mitigation site between 2001 and 2008.</i>
Chart 2	<i>Transect map showing vegetation types of Transect 1 from start (0 feet) to end (1247 feet) in 2008.</i>
Chart 3	<i>Length of vegetation communities within Transect 1 during 2008.</i>

FIGURES

Figure 1	<i>Project Site Location Map</i>
Figure 2	<i>2008 Monitoring Activity Locations</i>
Figure 3	<i>2008 Mapped Site Features</i>

APPENDICES

Appendix A	<i>Figures 2 & 3</i>
Appendix B	<i>2008 Wetland Mitigation Site Monitoring Form 2008 Bird Survey Form 2008 COE Wetland Delineation Forms' 2008 MDT Wetland Mitigation Site Monitoring Form</i>
Appendix C	<i>2008 Representative Photographs</i>
Appendix D	<i>Project Plan Sheet</i>
Appendix E	<i>Bird Survey Protocol GPS Protocol</i>

1.0 INTRODUCTION

The Big Hole Grazing Association (BHGA) wetland mitigation project was constructed in the fall of 2007 by the Montana Department of Transportation (MDT). The purpose of the project is to restore approximately 45 acres of wetland habitat within a 96-acre easement area owned by the BHGA. The project would provide a wetland mitigation reserve in Watershed #6 - Upper Missouri River Basin. MDT has not yet identified any construction projects in this watershed that would be applied against the Big Hole Grazing Association reserve.

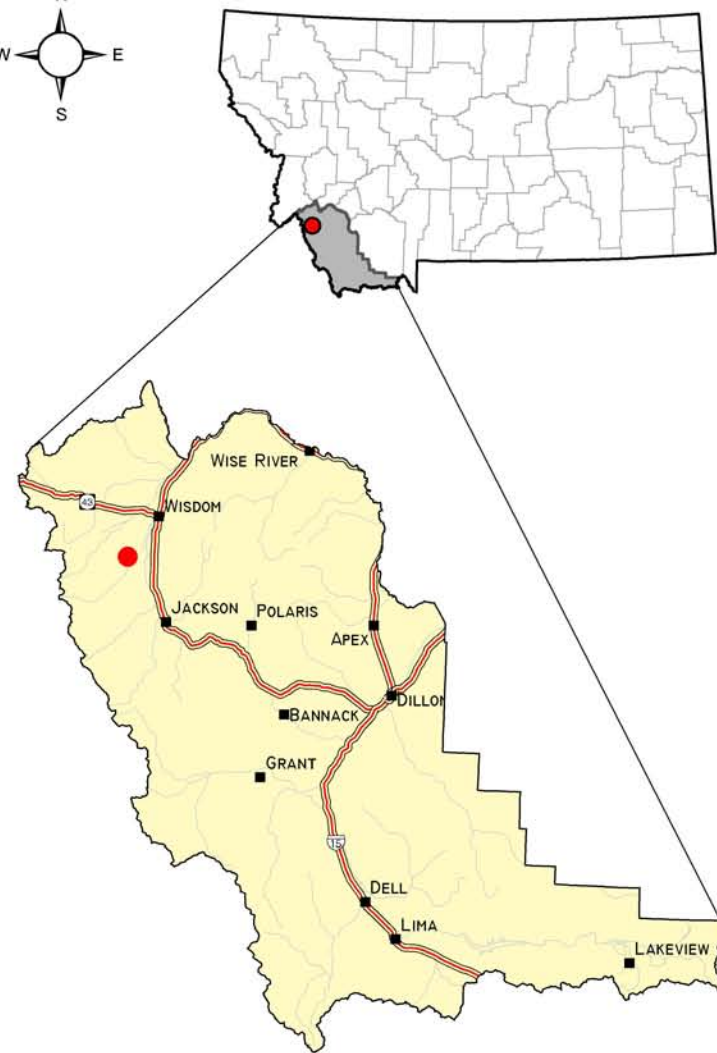
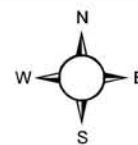
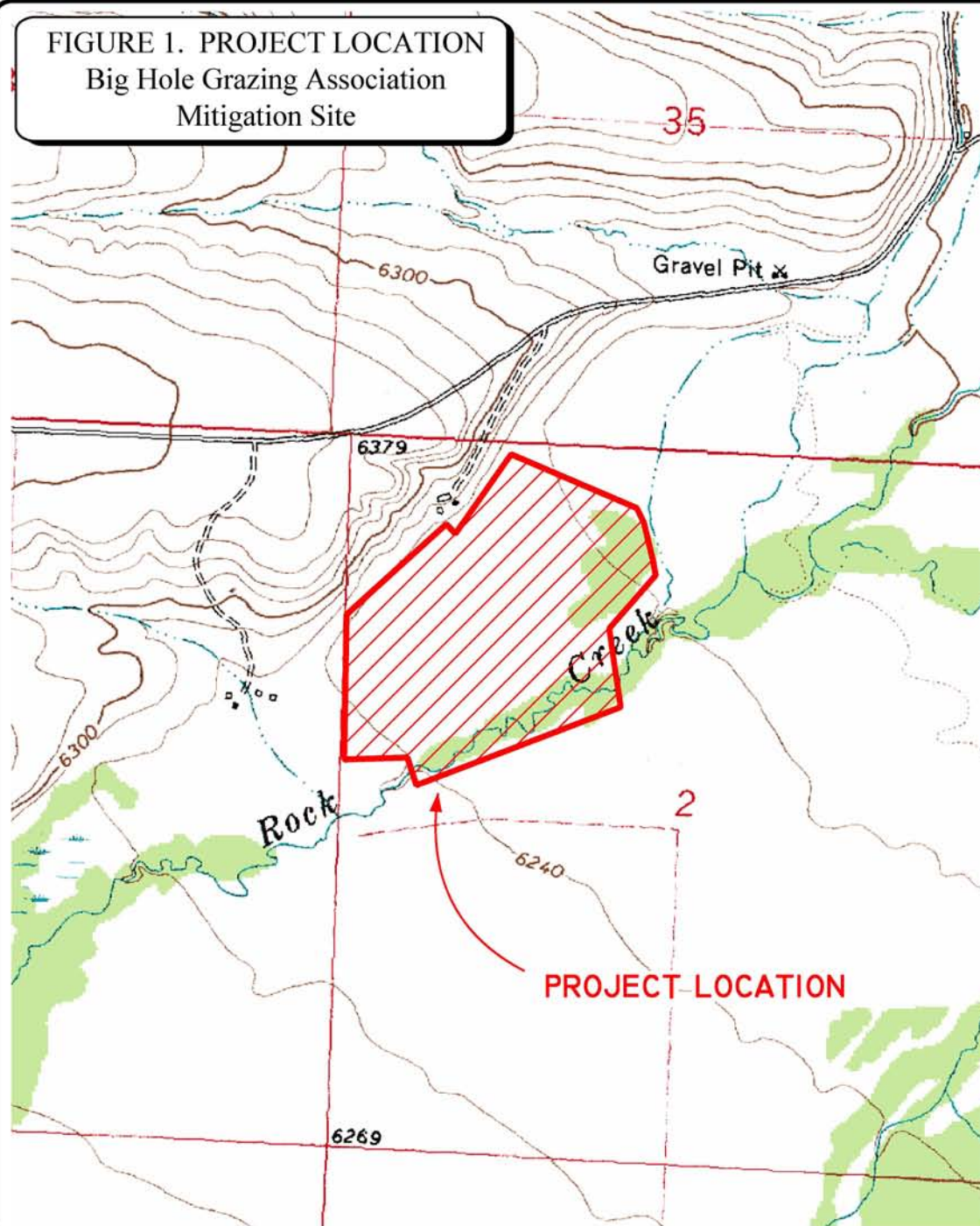
This report documents the first year of monitoring at the Big Hole Grazing Association Wetland Mitigation site. This project is located approximately 7 miles southwest of the town of Wisdom and approximately 4 miles west of Secondary Route 278 (**Figure 1**). Specifically, the project is located in the NW ¼ of Section 2, Township 4 South and Range 16 West in Beaverhead County.

Prior to project initiation, the BHGA utilized the project area for grazing and haying operations. Drainage ditches had been utilized for decades to drain the project area, which has a naturally high groundwater table and receives spring flows from the hillside to the north of the site. In addition to the springs and groundwater, Rock Creek, a perennial tributary to the Big Hole River, flows through the southern portion of the easement area.

In an attempt to restore natural hydrology to the site and thus restore wetlands within the easement area, the primary drainage ditch, which flowed northwest to southeast through the easement area, was completely filled and reclaimed. A secondary ditch which runs north to south across the western portion of the site was breached in three locations in an attempt to prevent drainage of the site and re-hydrate former wetlands by raising groundwater levels across the site. A project plan sheet is provided in **Appendix D**.

Prior to project implementation, MDT documented approximately 31 acres of emergent and scrub/shrub wetland across the entire 96-acre easement area, noting that some wetland areas were likely much larger prior to construction of drainage ditches across the site in the 1960's. The intent of the project was to restore natural hydrology to the site in an attempt to restore wetlands within the easement area. According to project files, the goal is to generate 45.8 acres of Corp of Engineers approved credit through the restoration of 42.3 acres of wetland credited at 1:1 and preservation of 14.0 acres credited at a 4:1 ratio (3.5 acres of credit).

FIGURE 1. PROJECT LOCATION
Big Hole Grazing Association
Mitigation Site



0 800 1,600
FEET

1:16,000

PROJECT #: 0B4308801
DATE: NOVEMBER 2008
LOCATION: BIG HOLE
PROJECT MGR: J. BERGLUND
DRAWN BY: MSA



801 N. LAST CHANCE GULCH
SUITE 101
HELENA, MT 59601-3360

2.0 METHODS

2.1 Monitoring Dates and Activities

A joint visit to the project site between MDT and PBS&J was conducted on July 8, 2008 to acquaint PBS&J staff with the site and set up photo points, vegetation transects, and identify woody vegetation planting locations. The initial monitoring effort occurred on August 6th (mid-season survey) of 2008. All information contained on the Wetland Mitigation Site Monitoring Form was collected during this site visit (**Appendix B**). Activities conducted and information collected included: wetland delineation; vegetation community mapping; vegetation transect monitoring; soils data collection; hydrology data collection; bird and wildlife use documentation; and photo documentation.

2.2 Hydrology

Hydrologic indicators were evaluated during the site visit on August 6th. Wetland hydrology indicators were recorded using procedures outlined in the COE 1987 Wetland Delineation Manual (Environmental Laboratory 1987). Hydrology data were recorded on COE Routine Wetland Delineation Data Forms and on the Wetland Mitigation Site Monitoring Form (**Appendix B**).

There are eight groundwater monitoring wells at the site that are routinely monitored by the U.S. Geological Service (USGS). Monitoring wells were not measured by PBS&J during the site visit. Monitoring well locations were mapped onto the 2008 aerial photo with the use of a global positioning system (GPS). Soil pits excavated for wetland delineation purposes were also used to evaluate the presence of groundwater if occurring within 12 inches from the ground surface. Data were recorded on the COE Routine Wetland Delineation Data Form (**Appendix B**).

2.3 Vegetation

General dominant species-based vegetation community types were delineated in the field during the mid-summer field visit. Standardized community mapping was not employed as many of these systems are geared towards climax vegetation. Estimated percent cover of the dominant species in each community type was recorded on the Wetland Mitigation Site Monitoring Form (**Appendix B**). Plants observed were identified using Flora of the Pacific Northwest (Hitchcock and Conquist 1975) and Plants of Montana (Dorn 1984). Nomenclature follows that of Dorn (1984).

Annual changes in vegetation, especially the establishment and increase of hydrophytic plants, will be evaluated through the use of belt transects. A single 10-foot wide vegetation belt transect was established at the site and monitored for the first time in 2008. The transect was mapped using a GPS. The transect start and end points were marked in the field and recorded with a GPS unit in 2008. Percent cover was estimated for each successive vegetative species encountered within the “belt” using the following values: + (<1%); 1 (1-5%); 2 (6-10%); 3 (11-20%); 4 (21-50%); and 5 (>50%). Photographs were taken at the start and end of each transect during the mid-season visit.

Woody species were planted in clumps across the site in May 2008. The location of each clump was recorded in the field with GPS and examined for plant survival.

2.4 Soils

Soil information was obtained from the Web Soil Survey (NRCS 2008). Soils were evaluated during the mid-season visit according to procedures outlined in the COE 1987 Wetland Delineation Manual. In the field, surface soils were evaluated for signs of wetland formation during the mid-season visit. If wetland indicators for hydrology or plants were found then a soil pit was excavated to look for evidence of hydric soil formation. Soil data were then recorded on the COE Routine Wetland Delineation Form (**Appendix B**).

2.5 Wetland Delineation

Wetland delineation was conducted during the mid-season visit in accordance with the 1987 COE Wetland Delineation Manual. In July 2008, consultation with the COE (Steinle pers. comm.) confirmed that, where the 1987 manual was used to establish baseline wetland conditions at MDT wetland mitigation sites, it should continue to be applied at such sites for the duration of the monitoring period. Consequently, application of the new *Interim Regional Supplement to the Corps of Engineers Wetland Delineation Manual: Western Mountains, Valleys, and Coast Region* (COE 2008) was not required or undertaken at this site in 2008.

The monitoring area was investigated for the presence of wetland hydrology, hydrophytic vegetation, and hydric soils. The indicator status of vegetation was derived from the National List of Plant Species that Occur in Wetlands: Northwest Region 9 (Reed 1988). The information was recorded on a COE Routine Wetland Delineation Data Form (**Appendix B**).

2.6 Mammals, Reptiles, and Amphibians

Mammal, reptile, and amphibian species observations and other positive indicators of use, such as vocalizations, were recorded on the wetland monitoring form during the site visits. Indirect use indicators, including tracks, scat, burrow, eggshells, skins, and bones, were also recorded. These signs were recorded as the observer traversed the site while conducting other required activities. Direct sampling methods, such as snap traps, live traps, and pitfall traps, were not used. A comprehensive wildlife species list for the entire site was compiled (**Appendix B**).

2.7 Birds

Bird observations were recorded during the site visits. No formal census plots, spot mapping, point counts, or strip transects were conducted. Bird observations were recorded incidental to other monitoring activity observations, using the bird survey protocol as a general guideline (**Appendix E**). Observations were categorized by species, activity code, and general habitat association on the Bird Survey Field Data Sheet (**Appendix B**). A comprehensive bird list was compiled using these observations.

2.8 Macroinvertebrates

Due to the lack of standing water, no aquatic macroinvertebrate sample was collected at this site.

2.9 Functional Assessment

In 2001, a functional assessment for each delineated wetland was conducted using the 1999 MDT Montana Wetland Assessment Method (MWAM) (Berglund 1999). In 2008 the 2008 MDT Montana Wetland Assessment Method (Berglund and McEldowney 2008) was applied. Field data necessary for this assessment were collected during the mid-season site visit. For each wetland or group of wetlands a Functional Assessment Form was completed (**Appendix B**).

2.10 Photographs

Photographs were taken in 2008 to show the current land use surrounding the site, the upland buffer, the monitored area, and the vegetation transect. Seven photograph points were established and their location recorded with a resource grade GPS unit. A description and compass direction for each photograph was recorded onto the Wetland Mitigation Site Monitoring Form (**Appendix B**).

2.11 GPS Data

During the 2008 monitoring season, survey points were collected with a resource grade GPS unit at vegetation transect beginning and ending locations, photo point locations, woody planting locations, and around the perimeter of all identified wetlands (**Appendix E**).

2.12 Maintenance Needs

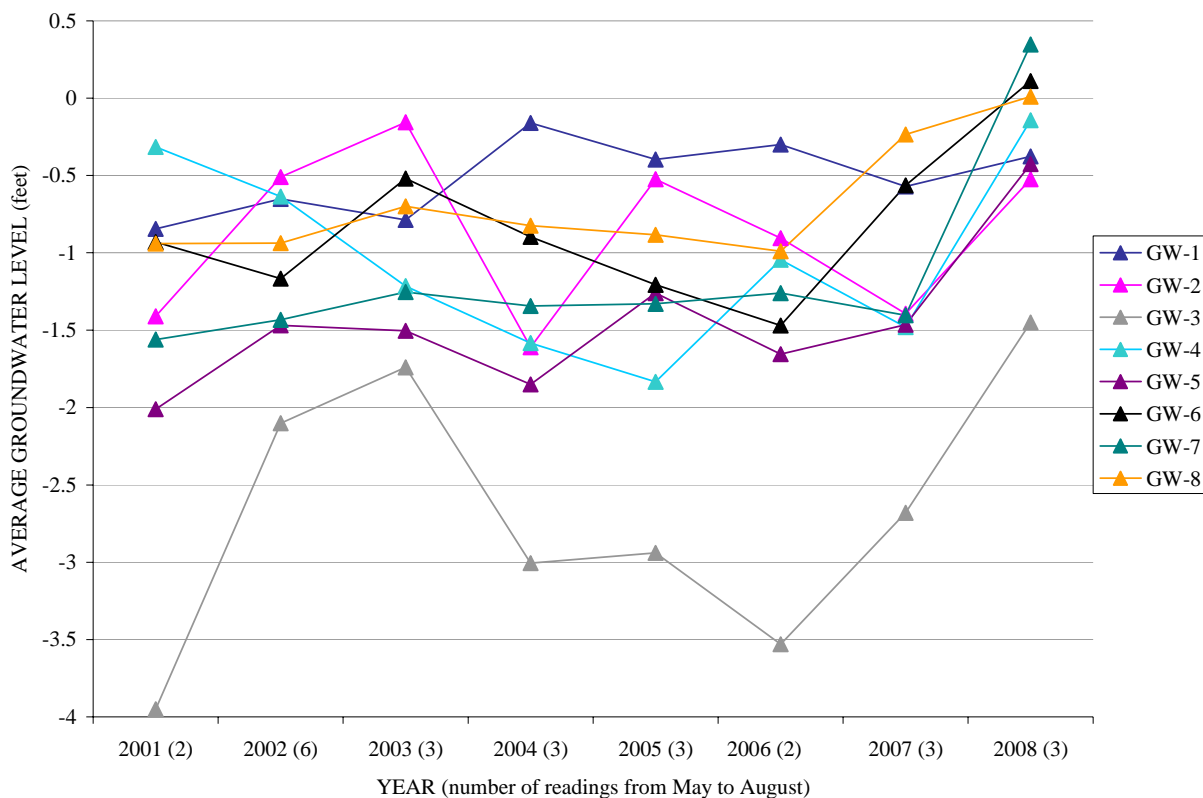
The Big Hole Grazing Association mitigation site is a groundwater driven project that does not include any manmade diversions, water level control structures, or other structures that might need periodic maintenance.

3.0 RESULTS

3.1 Hydrology

Eight groundwater monitoring wells were installed across the site in 2001 and have been monitored annually by the USGS. The primary goal of the project was to raise groundwater levels across the easement area by plugging the two main drainage ditches across the site. As indicated in **Chart 1** below, groundwater levels following construction in 2007 were noticeably

Chart 1: Average groundwater levels during the growing season across the Big Hole Grazing Association mitigation site between 2001 and 2008.



higher during monitoring in 2008. **Chart 1** shows the average groundwater level during the growing season (May to August) for each of the eight wells between 2001 and 2008

For the first time in 2008, water levels were documented above the ground surface at wells 6, 7, and 8, while all other wells also showed a significant increase. Water levels were within a half foot of the ground surface at all well locations except well 3 which is the southern most well on the site. Shallow standing water was noted in several wet meadow locations during the August monitoring, indicating saturation to the surface across much of the site throughout the growing season. Except for the Rock Creek channel, there are no areas of unvegetated open water across the easement area.

From January to August of 2008, the Wisdom weather station (#249067) reported 7.22 inches (in) of precipitation compared to the long term average of 8.57 inches over the same 8-month time period (Western Regional Climate Center (WRCC) 2008). It was assumed that precipitation levels measured at the Wisdom Weather Station would serve as an indicator of precipitation received at the mitigation site.

3.2 Vegetation

The relatively flat 96-acre easement area has a variety of wetland and upland vegetation communities. Plant species observed during this first year of monitoring have been compiled in a list (**Table 1**). Mapped vegetation community types were based on topography, hydrology, and plant composition. A total of one upland community, four wetland communities, and one transitional community were identified in 2008 (**Figure 3** in **Appendix A**). For purposes of describing vegetation types, the site can be divided into four basic areas: the northwest corner, the northeast corner, the south side, and the central portion. The northwest corner contains a 7-acre sedge-dominated (Vegetation Type 3) fen that is in reasonably good health and was likely never adversely impacted by previous ditching on the site (**Monitoring Forms** in **Appendix B**).

Table 1: 2008 vegetation species list for the Big Hole Grazing Association Wetland Mitigation Site.

Scientific Name	Region 9 (Northwest) Wetland Indicator	Scientific Name	Region 9 (Northwest) Wetland Indicator
<i>Achillea millefolium</i>	FACU	<i>Hordeum jubatum</i>	FAC+
<i>Agropyron trachycaulum</i>	FAC	<i>Juncus balticus</i>	OBL
<i>Agrostis alba</i>	FACW	<i>Juncus longistylis</i>	FACW
<i>Alnus incana</i>	FACW	<i>Kochia scoparia</i>	FAC
<i>Alopecurus pratensis</i>	FACW	<i>Lemna minor</i>	OBL
<i>Aster hesperius</i>	OBL	<i>Mimulus guttatus</i>	OBL
<i>Beckmannia syzigachne</i>	OBL	<i>Myosotis scorpioides</i>	FACW
<i>Betula pumila</i>	OBL	<i>Phleum pratense</i>	FACU
<i>Bromus inermis</i>	---	<i>Poa juncifolia</i>	FACU+
<i>Calamagrostis canadensis</i>	FACW+	<i>Poa pratensis</i>	FACU+
<i>Carex aquatilis</i>	OBL	<i>Polygonum amphibium</i>	OBL
<i>Carex nebrascensis</i>	OBL	<i>Potamogeton sp.</i>	OBL
<i>Carex praegracilis</i>	FACW	<i>Potentilla glandulosa</i>	FAC-
<i>Carex utriculata</i>	OBL	<i>Potentilla gracilis</i>	FAC
<i>Centaurea maculosa</i>	---	<i>Rosa woodsii</i>	FACU
<i>Cirsium arvense</i>	FACU+	<i>Rumex crispus</i>	FACW
<i>Cornus stolonifera</i>	FACW	<i>Salix bebbiana</i>	FACW
<i>Deschampsia cespitosa</i>	FACW	<i>Salix exigua</i>	OBL
<i>Eleocharis palustris</i>	OBL	<i>Salix lemmonii</i>	FACW+
<i>Eleocharis pauciflora</i>	OBL	<i>Scirpus acutus</i>	OBL
<i>Epilobium ciliatum</i>	FACW-	<i>Senecio sphaerocephalus</i>	FACW
<i>Equisetum arvense</i>	FAC	<i>Sisyrinchium angustifolium</i>	FACW-
<i>Festuca octoflora</i>	---	<i>Spiranthes romanzoffiana</i>	OBL
<i>Geum Aleppicum</i>	FACW-	<i>Taraxacum officinale</i>	---
<i>Glyceria elata</i>	FACW+	<i>Thlaspi arvense</i>	---
<i>Glycyrrhiza lepidota</i>	FAC+	<i>Trifolium pratense</i>	FACU
<i>Gnaphalium palustre</i>	FAC+	<i>Triglochin palustre</i>	OBL
<i>Hippuris vulgaris</i>	OBL	<i>Typha latifolia</i>	OBL
<i>Hordeum brachyantherum</i>	FACW-		

The east/northeast side of the easement area was once likely dominated by willow communities but was converted to upland and wet meadow through years of being drained and grazed. This area has numerous hummocks and with the restoration of hydrology to the site is already showing signs of converting back to its previous state. Willow shoots are common on the

numerous hummocks, while sedge and other OBL and FACW species are replacing more facultative grasses and forbs (Vegetation Type 6) (**Monitoring Forms in Appendix B**).

Rock Creek and its associated willow-dominated (Vegetation Type 4) floodplain run west to east across the southern portion of the easement area (**Monitoring Forms in Appendix B**). Willow communities are in relatively good health and were never adversely affected by drainage of the easement area because these wetland areas are tied hydraulically to Rock Creek.

The large central portion of the easement area is a mix of Vegetation Type 1 (mixed grass upland) and Type 5 (wet meadow) (**Monitoring Forms in Appendix B**). This area has been most affected by past management activities on the property, as wetland was converted to upland for agricultural purposes.

Vegetation Type 2 (Transitional) occurs along the large drainage ditch that used to drain the project area but was filled as part of the restoration effort. Wetland vegetation is beginning to establish in this area as a result of seeding and planting of woody vegetation (**Monitoring Forms in Appendix B**).

Plant composition along a single vegetation transect was quantified during the initial monitoring effort in 2008. Transect results are detailed in the Monitoring Form (**Appendix B**) and are summarized in **Table 2** and **Charts 2** and **3**. The transect runs south to north through the central portion of the mitigation area, starting at monitoring well #3 and ending at monitoring well #6 (**Figure 2** in **Appendix A**). This transect includes areas of mixed grass upland, wet meadow, and a transitional area where the drainage ditch was filled.

Table 2: 2008 data summary for Transect 1.

Monitoring Year	2008
Transect Length (feet)	1247
# Vegetation Community Transitions along Transect	7
# Vegetation Communities along Transect	3
# Hydrophytic Vegetation Communities along Transect	2
Total Vegetative Species	22
Total Hydrophytic Species	13
Total Upland Species	9
Estimated % Total Vegetative Cover	75
% Transect Length Comprised of Hydrophytic Vegetation Communities	45
% Transect Length Comprised of Upland Vegetation Communities	55
% Transect Length Comprised of Unvegetated Open Water	0
% Transect Length Comprised of Bare Substrate	0

Chart 2: Transect map showing vegetation types of Transect 1 from start (0 feet) to end (1247 feet) in 2008.

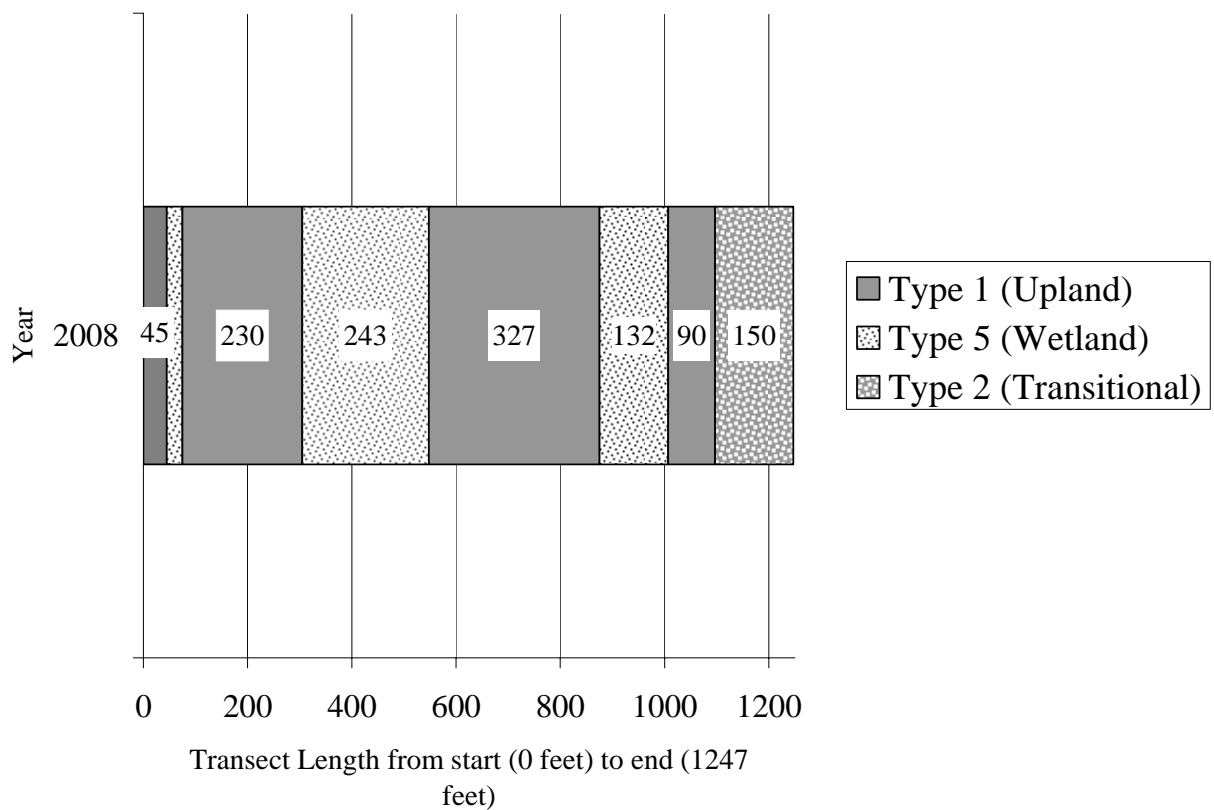
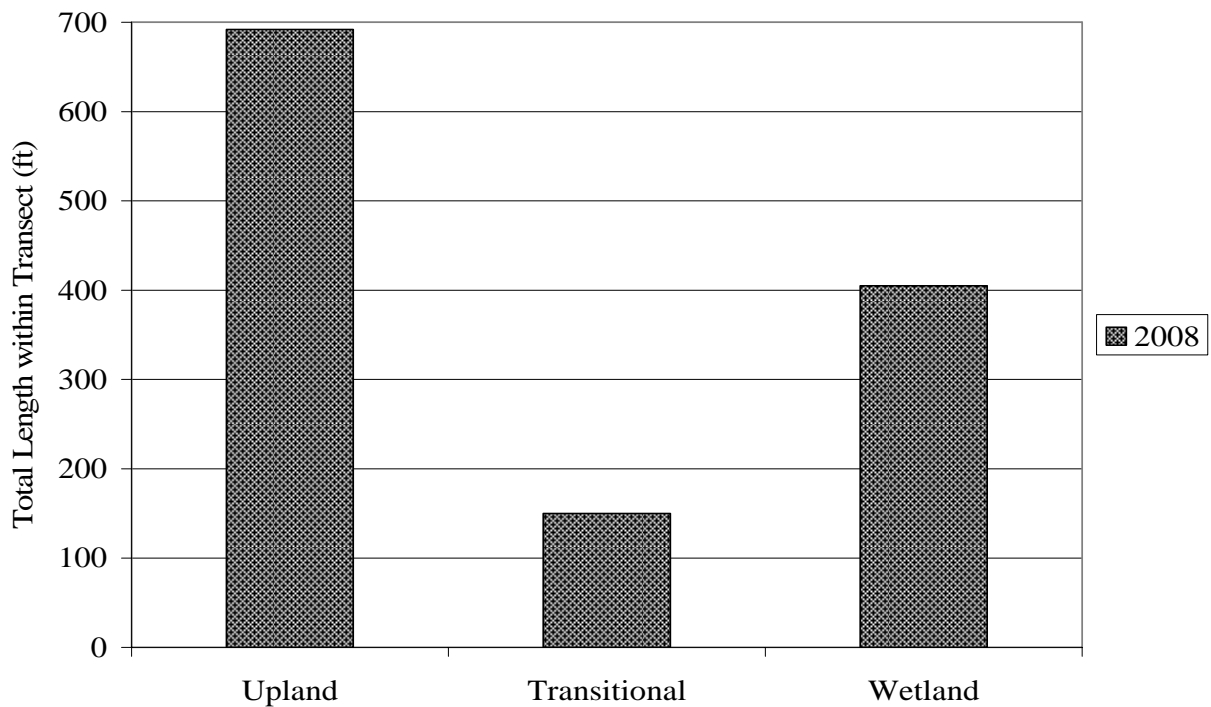


Chart 3: Length of vegetation communities within Transect 1 during 2008.



In May 2008, woody vegetation was planted in 45 clumps along the filled-in drainage ditch and along the secondary drainage ditch that was plugged in three locations (**Figure 2 in Appendix A**). Three plant species were planted: birch (*Betula pumila*), alder (*Alnus incana*), and dogwood (*Cornus stolonifera*). There were a total of 961 plantings counted during the 2008 monitoring. Approximately 79% (756 stems) survived through the first growing season. Generally speaking, alder and dogwood had a high survival rate, while less than half of the birch survived. Mortality of birch plantings was likely due to wetter than expected conditions.

Cirsium arvense was the only State noxious weed found in 2008; it occurred in one primary location (**Figure 3 in Appendix A**). The infestation was small, with a few plants scattered across disturbed ground.

3.3 Soils

According to soil survey, the easement area has two primary soil types: *Mooseflat Loam 0-4% slope* along the Rock Creek corridor and *Foxgulch-Copperbasin-Wisdom complex 0-2% slope* for the remaining study area (NRCS 2008). The drainage class for both soil types is conducive to wetland development.

Soils were investigated across much of the site in 2008. Typical soil profiles throughout the site consisted of sandy loam and clay loam with matrix colors ranging from 10YR 2/1 with no mottles to 10YR 4/2 with distinct 10YR 6/8 mottles (**COE Forms in Appendix B**). Within wetland areas, soils were generally saturated within the upper 12 inches of the profile and to near the surface in many cases.

3.4 Wetland Delineation

According to project documents the site was delineated by MDT in June of 2001. At that time, approximately 31 acres of wetland habitat was delineated within project boundaries. Wetland delineation during the August 2008 monitoring documented 49.81 acres of wetland for a difference of 18.81 acres (**Figure 3 in Appendix A**). The largest difference between the two delineations is in the east/northeast corner, where the 2008 delineation revealed 13.45 acres of developing EM/SS wetland in an area previously determined by MDT to be upland. It is probable that restoration of groundwater to this part of the project in the fall of 2007 was already having a positive affect on plant composition and saturated soil conditions in August 2008.

Delineated wetland boundaries, uplands, and transitional areas were mapped (**Figure 3 in Appendix A**). As mentioned, hydrophytic vegetation was quick to establish in the northeast corner of the site and also began to appear within the central portion of the site in previously identified upland areas. Herbaceous plant establishment in the filled drain ditch has been slow, as disturbed areas transition to wetland (Transitional Type 2 on **Figure 3 in Appendix A**). This area (2.15 acres) was not counted towards the wetland total in 2008 but will likely continue to develop into wetland in future years.

Table 3 below lists the acreages for delineated wetland within monitoring limits. In addition to the 49.81 acres of wetland within monitoring limits, there is an additional approximately 43 acres of upland habitat.

Table 3: Acreages for each 2008 wetland community within the Big Hole Grazing Association Wetland Mitigation Site.

Wetland Community	Acreage
Type 3 – <i>Carex</i> Wetland	7.19
Type 4 – <i>Salix</i> Wetland	13.28
Type 5 – Wet Meadow Wetland	15.89
Type 6 – Emergent / Scrub-shrub Wetland	13.45
Total Wetland Habitat	49.81

3.5 Wildlife

Direct observations of all wildlife species and signs indicating their presence were compiled in **Table 4** and in **Appendix B**. Relatively few bird species were noted – however, conditions were less than optimal (temperatures in the 90's) during the August monitoring. Of note was the observation of a Great Horned Owl along the Rock Creek corridor. Animals not observed but likely to occur there include various small mammals, reptiles, amphibians, and various song birds.

Table 4: Fish and wildlife species observed within the Big Hole Grazing Association Wetland Mitigation Site in 2008.

FISH, AMPHIBIAN, and REPTILE
Trout – unidentified species in Rock Creek
BIRD
Bank Swallow (<i>Riparia riparia</i>)
Cliff Swallow (<i>Petrochelidon pyrrhonota</i>)
Great Horned Owl (<i>Bubo virginianus</i>)
Great Blue Heron (<i>Ardea herodias</i>)
Killdeer (<i>Charadrius vociferous</i>)
Mallard (<i>Anas platyrhynchos</i>)
Red-winged Blackbird (<i>Agelaius phoeniceus</i>)
Rock Dove (<i>Columba livia</i>)
Spotted Sandpiper (<i>Actitis macularia</i>)
Wilson's Phalarope (<i>Phalaropus tricolor</i>)
Song Sparrow (<i>Melospiza melodia</i>)
MAMMAL
Deer (<i>Odocoileus</i> sp.)
Moose (<i>Alces alces</i>)
American Badger (<i>Taxidea taxus</i>)

3.6 Macroinvertebrates

Aquatic macroinvertebrates were not sampled at this site in 2008.

3.7 Functional Assessment

MDT project files indicate that prior to project implementation, wetlands occurring along the Rock Creek corridor and in the northwest corner (fen area) rated as Category II wetlands while all other wetland on the site rated as Category III using the MDT 1999 MDT Montana Wetland Assessment Method. 2008 conditions were assessed using the 2008 MDT Assessment Method (**Functional Assessment Form in Appendix B**).

In 2008, two functional assessments were completed for wetlands at the Big Hole Grazing Association mitigation site. Wetlands associated with the Rock Creek drainage (Assessment 1) were assessed on one form while all other wetlands were rated together (Assessment 2). In summary, all wetlands within project boundaries rated as Category II, with high ratings for short and long term surface water storage, sediment/nutrient/toxicant removal, and groundwater discharge/recharge (**Table 5**). Wetlands along Rock Creek also received high ratings for fish and wildlife habitat, flood attenuation, short and long term surface water storage, sediment/shoreline protection, and production export / food chain support. The larger wetland area received a high rating for uniqueness because of the fen qualities exhibited in the northwest portion of the easement area.

Table 5: Summary of 2008 wetland function/value ratings and functional points at the Big Hole Grazing Association Wetland Mitigation Site.

Function and Value Parameters from the MDT Montana Wetland Assessment Method	2008 Assessment 1 Rock Creek Wetlands	2008 Assessment 2
Listed/Proposed T&E Species Habitat	Low (0.1)	Low (0.1)
MTNHP Species Habitat	Low (0.2)	Low (0.1)
General Wildlife Habitat	High (0.9)	Mod (0.7)
General Fish/Aquatic Habitat	High (0.8)	NA
Flood Attenuation	High (0.8)	NA
Short and Long Term Surface Water Storage	High (0.8)	High (1.0)
Sediment/Nutrient/Toxicant Removal	High (0.9)	High (1.0)
Sediment/Shoreline Stabilization	High (1.0)	NA
Production Export/Food Chain Support	High (1.0)	Mod (0.6)
Groundwater Discharge/Recharge	High (1.0)	High (1.0)
Uniqueness	Mod (0.4)	High (0.9)
Recreation/Education Potential	Low(0.05)	Low(0.05)
Actual Points / Possible Points	7.95 / 11	5.45 / 8
% of Possible Score Achieved	72%	68%
Overall Category	II	II
Total Acreage of Assessed Wetlands and Other Aquatic Habitats within Site Boundaries (ac)	10	39.81
Functional Units (acreage x actual points)	79.50	217

3.8 Photographs

Representative photos were taken from photo-points (**Photos 1-21**), transect ends (**Photos 22-23**), and of the general project area (**Photo 24**) (**Appendix C**). The 2008 aerial photograph was taken on July 8th was used as a base for **Figures 2 and 3** (**Appendix A**).

3.9 Maintenance Needs / Recommendations

As a majority of the mitigation site relies entirely on groundwater to support wetlands, there are no man-made water level control features to monitor. The project area has a wooden fence around the perimeter that was in good condition in 2008. There were no man-made bird nesting structures to monitor in 2008 although MDT installed bird boxes shortly after monitoring was completed. The new boxes will be monitored in 2009.

From a vegetative standpoint, disturbed areas where the ditch was filled were reseeded following construction and appeared to be progressing satisfactorily, as were a majority of the woody plantings. No additional seeding or planting is recommended at this time. One small infestation of Canada thistle was identified (see **Figure 3** in **Appendix A**). Spraying or pulling may prevent spread to other parts of the site.

3.10 Current Credit Summary

Correspondence in the MDT project file indicates that the overall goal was to achieve 45.8 acres of Corps-approved mitigation credit within the 96 acre easement area. Credit was to be obtained for 42.3 acres of wetland restoration at a ratio of 1:1, and 3.5 acres of credit was to be obtained for preservation of 14.0 acres at a ratio of 4:1. The 14.0 acres of preservation applies to the Rock Creek corridor and the fen area in the northwest corner of the site – neither of which was impacted by the filling of the ditches. These areas did however benefit from the removal of cattle grazing from the site.

Assuming that restoration credit is granted for all wetlands on the site other than the 14 acres dedicated as “preservation”, the maximum 2008 credit breakdown is as follows:

14 acres preservation at 4:1 ratio:	3.5 acres credit
35.81 acres restoration at 1:1 ratio:	<u>35.81 acres credit</u>
Total 2008 credit:	39.31 acres credit

Year 1 of monitoring showed a positive trend toward hydrologic restoration within a large portion of the site as indicated by the raising of groundwater levels at all eight monitoring wells and the fact that 49.81 acres of wetland were delineated on the site compared to 31 acres pre-project. Over time, it is anticipated that additional wetland will develop, especially towards the center of the project area, where upland grass communities convert to wet meadow and emergent marsh. Overall, the site appears to be on target to meet project goals.

4.0 REFERENCES

- Berglund, J. 1999. *MDT Montana Wetland Assessment Method*. May 25th. Prepared for Montana Department of Transportation and Morrison-Maierle, Inc. Prepared by Western EcoTech. Helena, Montana. 18 pp.
- Berglund, J. and R. McEldowney. 2008. *MDT Montana Wetland Assessment Method*. Prepared for Montana Department of Transportation, Helena, Montana. Post, Buckley, Schuh, & Jernigan, Helena, Montana. 42pp.
- Environmental Laboratory. 1987. *Corps of Engineers Wetlands Delineation Manual*. U.S. Army Corps of Engineers. Washington, DC.
- Natural Resources Conservation Service (NRCS). 2008. Soil Information for the Big Hole Grazing Wetland Mitigation Site. Obtained on December 8th from the world wide web at: <http://websoilsurvey.nrcs.usda.gov/app/>.
- Reed, P.B. 1988. *National List of Plant Species that Occur in Wetlands: North West (Region 9)*. Biological Report 88(26.9), May 1988. U.S. Fish and Wildlife Service. Washington, D.C.
- Steinle, A. 2008. Montana Program Manager, U.S. Army Corps of Engineers, Helena, Montana. July 14th telephone conversation.
- U.S. Army Corps of Engineers (COE). 2008. *Interim Regional Supplement to the Corps of Engineers Wetland Delineation Manual: Western Mountains, Valleys, and Coast Region*, ed. J. S. Wakeley, R. W. Lichvar, and C. V. Noble. ERDC/EL TR-08-13. U.S. Army Engineer Research and Development Center, Vicksburg, Missouri.
- Western Regional Climate Center (WRCC). 2008. Precipitation data for the Wisdom weather station, Montana (249067). Obtained on December 10th from <http://www.wrcc.dri.edu/CLIMATEDATA.html>

Appendix A

FIGURES 2 & 3

*MDT Wetland Mitigation Monitoring
Big Hole Grazing Association
Beaverhead County, Montana*

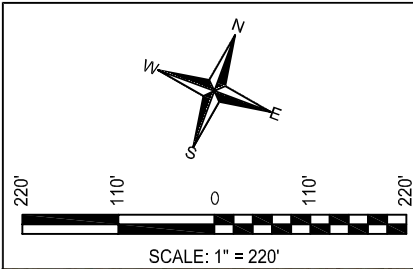
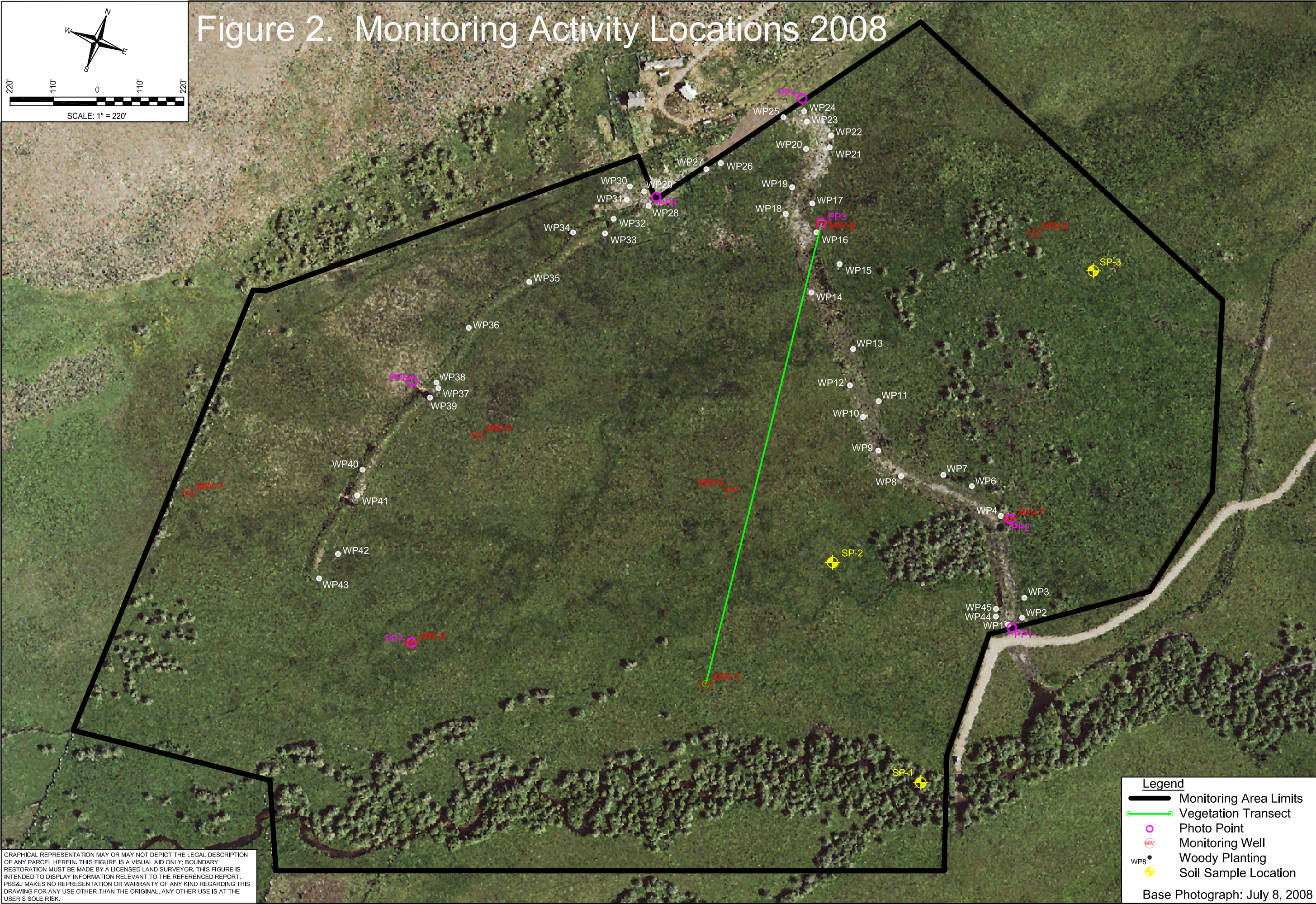


Figure 2. Monitoring Activity Locations 2008



GRAPHICAL REPRESENTATION MAY OR MAY NOT DEPICT THE LEGAL DESCRIPTION OF ANY PARCEL HEREIN. THIS FIGURE IS A VISUAL AID ONLY; BOUNDARY RESTORATION MUST BE MADE BY A LICENSED LAND SURVEYOR. THIS FIGURE IS INTENDED TO DISPLAY INFORMATION RELEVANT TO THE REFERENCED REPORT. PBS&J MAKES NO REPRESENTATION OR WARRANTY OF ANY KIND REGARDING THIS DRAWING FOR ANY USE OTHER THAN THE ORIGINAL. ANY OTHER USE IS AT THE USER'S SOLE RISK.

Legend

- Monitoring Area Limits
- Vegetation Transect
- Photo Point
- Monitoring Well
- Woody Planting
- Soil Sample Location

Base Photograph: July 8, 2008

MDT BIG HOLE GRAZING WETLAND MITIGATION		MONITORING ACTIVITY LOCATIONS 2008	
PROJ NO: 0B4308801 03.02	DRAWN: JR	PROJ MGR: J. BERGLUND	CHECKED: MT / APPVD: JB
LOCATION: WISDOM, MT	SCALE: NOTED	FILE NAME: BASE 2008_recovery	DATED: Dec/10/2008
801 N. Last Chance Gulch Suite 100 Helena, MT 59601			
FIGURE 2		REV -	
		DATE 11/29/2008	

Appendix B

2008 WETLAND MITIGATION SITE MONITORING FORM

2008 BIRD SURVEY FORM

2008 COE WETLAND DELINEATION FORMS

2008 MDT FUNCTIONAL ASSESSMENT FORM

MDT Wetland Mitigation Monitoring

Big Hole Grazing Association

Beaverhead County, Montana

PBS&J / MDT WETLAND MITIGATION SITE MONITORING FORM

Project Name: **Bighole Grazing Association** Project Number: **0B4308801**
Assessment Date: **August 6, 2008** Person(s) conducting the assessment: **Traxler**
Location: **10 miles southwest of Wisdom** MDT District: **Butte** Milepost:
Legal Description: T **4S** R **16W** Section **2**
Weather Conditions: **sunny, hot** Time of Day: **8:00am - 5:00pm**
Initial Evaluation Date: **August 6, 2008** Monitoring Year: **1** # Visits in Year: **1**
Size of evaluation area: **95 acres** Land use surrounding wetland: **Rangeland; hayland**

HYDROLOGY

Surface Water Source: **Rock Creek, precipitation, springs, groundwater**
Inundation: **Present** Average Depth: Range of Depths: **0-36"**
Percent of assessment area under inundation: **67%**
Depth at emergent vegetation-open water boundary: **0.5 feet**
If assessment area is not inundated then are the soils saturated within 12 inches of surface: **Yes**
Other evidence of hydrology on the site (ex. – drift lines, erosion, stained vegetation, etc.):
Ditches and drainage patterns.

Groundwater Monitoring Wells: **Present**

Record depth of water below ground surface (in feet): **recorded by USGS on 7/31/08**

Well Number	Depth	Well Number	Depth	Well Number	Depth
<u>1</u>	<u>1.29</u>	<u>5</u>	<u>0.86</u>		
<u>2</u>	<u>1.18</u>	<u>6</u>	<u>-0.51</u>		
<u>3</u>	<u>1.72</u>	<u>7</u>	<u>-0.17</u>		
<u>4</u>	<u>0.40</u>	<u>8</u>	<u>0.10</u>		

Additional Activities Checklist:

- ☒ Map emergent vegetation-open water boundary on aerial photograph.
- ☒ Observe extent of surface water during each site visit and look for evidence of past surface water elevations (drift lines, erosion, vegetation staining, etc.)
- ☒ Use GPS to survey groundwater monitoring well locations, if present.

COMMENTS / PROBLEMS:

USGS has been routinely monitoring groundwater levels at the 8 wells since 2001. Well readings were taken one week prior to the PBS&J monitoring of the site and therefore PBS&J did not monitor well levels. In the table above, Well Numbers 6 & 7 actually had standing surface water as indicated by a (-) before the depth.

VEGETATION COMMUNITIES

Community Number: **1** Community Title (main spp): **Mixed Grass Upland**

Dominant Species	% Cover	Dominant Species	% Cover
Achillea millefolium	1 = 1-5%	Poa juncifolia	1 = 1-5%
Agropyron trachycaulum	2 = 6-10%	Poa pratensis	2 = 6-10%
Agrostis alba	2 = 6-10%	Taraxacum officinale	1 = 1-5%
Bromus inermis	1 = 1-5%		
Festuca octoflora	4 = 21-50%		
Phleum pratense	3 = 11-20%		

Comments / Problems: _____

Community Number: **2** Community Title (main spp): **Transitional**

Dominant Species	% Cover	Dominant Species	% Cover
Agrostis alba	2 = 6-10%	Juncus balticus	2 = 6-10%
Beckmannia syzigachne	1 = 1-5%	Polygonum amphibium	1 = 1-5%
Carex nebrascensis	1 = 1-5%	Potamogeton sp.	2 = 6-10%
Eleocharis palustris	2 = 6-10%	Rumex crispus	1 = 1-5%
Hordeum brachyantherum	2 = 6-10%	Mimulus guttatus	2 = 6-10%
Hordeum jubatum	2 = 6-10%	Deschampsia cespitosa	2 = 6-10%

Comments / Problems: **Area where main drain ditch was filled in - beginning to reveg with mainly wetland species.**

Community Number: **3** Community Title (main spp): **Carex**

Dominant Species	% Cover	Dominant Species	% Cover
Carex aquatilis	4 = 21-50%		
Carex nebrascensis	4 = 21-50%		
Carex utriculata	4 = 21-50%		

Comments / Problems: **Sedge dominated fen area in NW corner of site.**

Community Number: **4** Community Title (main spp): **Salix**

Dominant Species	% Cover	Dominant Species	% Cover
Salix exigua	3 = 11-20%	Agrostis alba	1 = 1-5%
Salix lemmonii	3 = 11-20%	Juncus balticus	1 = 1-5%
Salix bebbiana	3 = 11-20%	Calamagrostis canadensis	1 = 1-5%
Alnus incana	2 = 6-10%		
Betula pumila	1 = 1-5%		
Cornus stolonifera	1 = 1-5%		

Comments / Problems: **Dominated by willow with scattered birch, dogwood, and alder in overstory and various wetland grasses in understory.**

VEGETATION COMMUNITIES (continued)

Community Number: 5 Community Title (main spp): Wet Meadow (mixed herbaceous)

Dominant Species	% Cover	Dominant Species	% Cover
Agrostis alba	2 = 6-10%	Deschampsia cespitosa	2 = 6-10%
Eleocharis palustris	1 = 1-5%	Mimulus guttatus	1 = 1-5%
Hordeum brachyantherum	2 = 6-10%	Senecio sphaerocephalus	1 = 1-5%
Hordeum jubatum	2 = 6-10%	Glyceria elata	2 = 6-10%
Juncus balticus	3 = 11-20%		
Alopecurus pratensis	3 = 11-20%		

Comments / Problems: Largest wetland community type within monitoring limits.

Community Number: 6 Community Title (main spp): EM/SS Mix

Dominant Species	% Cover	Dominant Species	% Cover
Agrostis alba	2 = 6-10%	Salix bebbiana	2 = 6-10%
Juncus balticus	3 = 11-20%	Salix lemmonii	2 = 6-10%
Carex nebrascensis	2 = 6-10%		
Carex utriculata	2 = 6-10%		
Carex praegracilis	1 = 1-5%		
Salix exigua	2 = 6-10%		

Comments / Problems: Along eastern edge of site - shrub componenet is beginning to be restored after having grazing removed.

Community Number: _____ Community Title (main spp): _____

Dominant Species	% Cover	Dominant Species	% Cover

Comments / Problems: _____

Community Number: _____ Community Title (main spp): _____

Dominant Species	% Cover	Dominant Species	% Cover

Comments / Problems: _____

COMPREHENSIVE VEGETATION LIST

Plant Species	Vegetation Community Number (s)	Plant Species	Vegetation Community Number (s)
<i>Achillea millefolium</i>	1,2	<i>Juncus balticus</i>	1,2,4,5,6
<i>Agropyron trachycaulum</i>	1	<i>Juncus longistylus</i>	1,2,5
<i>Agrostis alba</i>	1,2,4,5,6	<i>Kochia scoparia</i>	1
<i>Alnus incana</i>	4	<i>Lemna minor</i>	3,5,6
<i>Alopecurus pratensis</i>	1,2,5	<i>Mimulus guttatus</i>	5,6
<i>Aster hesperius</i>	3,5,6	<i>Myosotis scorpioides</i>	2,5,6
<i>Beckmannia syzigachne</i>	2,5	<i>Phleum pratense</i>	1
<i>Betula pumila</i>	4,6	<i>Poa Juncifolia</i>	1
<i>Bromus inermis</i>	1	<i>Poa pratensis</i>	1
<i>Calamagrostis canadensis</i>	3,4,5,6	<i>Polygonum amphibium</i>	2,6
<i>Calamagrostis scopulorum</i>	5,6	<i>Potamogeton sp.</i>	3,5,6
<i>Carex aquatilis</i>	3	<i>Potentilla glandulosa</i>	1
<i>Carex nebrascensis</i>	3,6	<i>Potentilla gracilis</i>	1,2,5
<i>Carex prae-gracilis</i>	3,6	<i>Rosa woodsii</i>	1,4
<i>Carex utriculata</i>	3,6	<i>Rumex crispus</i>	2,5,6
<i>Centaurea maculosa</i>	1	<i>Salix bebbiana</i>	4,6
<i>Cirsium arvense</i>	1,2,5	<i>Salix exigua</i>	4,6
<i>Cornus stolonifera</i>	4	<i>Salix lemmonii</i>	4,6
<i>Deschampsia cespitosa</i>		<i>Scirpus acutus</i>	3,6
<i>Eleocharis palustris</i>	2,4,5,6	<i>Senecio sphaerocephalus</i>	5,6
<i>Eleocharis pauciflora</i>	5,6	<i>Sisyrinchium angustifolium</i>	5
<i>Epilobium ciliatum</i>	2,5,6	<i>Taraxacum officinale</i>	1
<i>Equisetum arvense</i>	1,2,5	<i>Thlaspi arvense</i>	1
<i>Festuca octoflora</i>	1	<i>Trifolium pratense</i>	1
<i>Geum Aleppicum</i>	2,5,6	<i>Triglochin palustre</i>	3,5,6
<i>Glyceria elata</i>		<i>Typha latifolia</i>	3,6
<i>Glycyrrhiza lepidota</i>	1,5		
<i>Gnaphalium palustre</i>	2,5		
<i>Hippuris vulgaris</i>	2,6		
<i>Hordeum brachyantherum</i>	2,5,6		
<i>Hordeum jubatum</i>	1,2,5		

Comments / Problems: _____

PLANTED WOODY VEGETATION SURVIVAL

[illegible]

Comments / Problems: Birch may have been planted in areas that were too wet. Many alder and dogwood sprouting from bases.

WILDLIFE

Birds

Were man-made nesting structures installed? No

If yes, type of structure: _____ How many? _____

Are the nesting structures being used? NA

Do the nesting structures need repairs? _____

Mammals and Herptiles

Mammal and Herptile Species	Number Observed	Indirect Indication of Use			
		Tracks	Scat	Burrows	Other
deer	0	<input checked="" type="checkbox"/>	<input checked="" type="checkbox"/>	<input type="checkbox"/>	
moose	0	<input checked="" type="checkbox"/>	<input checked="" type="checkbox"/>	<input type="checkbox"/>	
badger	0	<input type="checkbox"/>	<input type="checkbox"/>	<input checked="" type="checkbox"/>	
		<input type="checkbox"/>	<input type="checkbox"/>	<input type="checkbox"/>	
		<input type="checkbox"/>	<input type="checkbox"/>	<input type="checkbox"/>	
		<input type="checkbox"/>	<input type="checkbox"/>	<input type="checkbox"/>	
		<input type="checkbox"/>	<input type="checkbox"/>	<input type="checkbox"/>	
		<input type="checkbox"/>	<input type="checkbox"/>	<input type="checkbox"/>	

Additional Activities Checklist:

NA Macroinvertebrate Sampling (if required)

Comments / Problems: _____

PHOTOGRAPHS

Using a camera with a 50mm lens and color film take photographs of the following permanent reference points listed in the check list below. Record the direction of the photograph using a compass. When at the site for the first time, establish a permanent reference point by setting a ½ inch rebar or fencepost extending 2-3 feet above ground. Survey the location with a resource grade GPS and mark the location on the aerial photograph.

Photograph Checklist:

- ☒ One photograph for each of the four cardinal directions surrounding the wetland.
- ☒ At least one photograph showing upland use surrounding the wetland. If more than one upland exists then take additional photographs.
- ☒ At least one photograph showing the buffer surrounding the wetland.
- ☒ One photograph from each end of the vegetation transect, showing the transect.

Location	Photograph Frame #	Photograph Description	Compass Reading (°)
PP1		View looking north	345
PP1		View looking west	270
PP1		View looking east	80
PP2		View looking northwest	300
PP2		View looking west	260
PP2		View looking east	80
PP3		View looking southeast	165
PP3		View looking west	270
PP3		View looking northwest	320
PP4		View looking southeast	165
PP4		View looking southeast	100
PP4		View looking southwest	210
PP5		View looking east	90
PP5		View looking southwest	245
PP5		View looking northwest	310
PP6		View looking southeast	110
PP6		View looking south	180
PP6		View looking northwest	320
PP7		View looking southwest	200
PP7		View looking west	270
PP7		View looking south	180
Transect 1		View from start of Transect looking north	5
Transect 1		View from end of Transect looking south	185
North End		View of woody plantings	

Comments / Problems: _____

GPS SURVEYING

Using a resource grade GPS survey the items on the checklist below. Collect at least 3 location points set at a 5 second recording rate. Record file numbers for site in designated GPS field notebook.

GPS Checklist:

- ☒ Jurisdictional wetland boundary.
- ☒ 4-6 landmarks that are recognizable on the aerial photograph.
- ☒ Start and End points of vegetation transect(s).
- ☒ Photograph reference points.
- ☒ Groundwater monitoring well locations.

Comments / Problems: _____

WETLAND DELINEATION

(attach COE delineation forms)

At each site conduct these checklist items:

- ☒ Delineate wetlands according to the 1987 Army COE manual.
- ☒ Delineate wetland – upland boundary onto aerial photograph.
- Yes** Survey wetland – upland boundary with a resource grade GPS survey.

Comments / Problems: _____

FUNCTIONAL ASSESSMENT

(Complete and attach full MDT Montana Wetland Assessment Method field forms.)

(Also attach any completed abbreviated field forms, if used)

Comments / Problems: _____

MAINTENANCE

Were man-made nesting structure installed at this site? **No**

If yes, do they need to be repaired? **NA**

If yes, describe the problems below and indicate if any actions were taken to remedy the problems.

Were man-made structures built or installed to impound water or control water flow into or out of the wetland? **Yes**

If yes, are the structures working properly and in good working order? **Yes**

If no, describe the problems below.

Comments / Problems: Nesting structures installed after monitoring in 2008 (MDT communication).

MDT WETLAND MONITORING – VEGETATION TRANSECT

Site: **Big Hole Grazing Association** Date: **August 6, 2008** Examiner: **PBS&J - Traxler**
 Transect Number: **1** Approximate Transect Length: **1247 feet** Compass Direction from Start: **S** Note: **Page 1**

Vegetation Type: Type 1 Upland	
Length of transect in this type: 45 feet	
Plant Species	Cover
Agrostis alba	2 = 6-10%
Festuca octoflora	3 = 11-20%
Poa pratensis	3 = 11-20%
Phleum pratense	3 = 11-20%
Taraxacum officinale	1 = 1-5%
Total Vegetative Cover:	90%

Vegetation Type: Type 5 Wet Meadow	
Length of transect in this type: 30 feet	
Plant Species	Cover
Agrostis alba	2 = 6-10%
Hordeum brachyantherum	2 = 6-10%
Glyceria elata	2 = 6-10%
Alopecurus pratensis	4 = 21-50%
Calamagrostis canadensis	1 = 1-5%
Senecio sphaerocephalus	1 = 1-5%
Myosotis scorpioides	2 = 6-10%
Total Vegetative Cover:	80%

Vegetation Type: Type 1 Upland	
Length of transect in this type: 230 feet	
Plant Species	Cover
Poa juncifolia	2 = 6-10%
Agropyron trachycaulum	1 = 1-5%
Hordeum jubatum	2 = 6-10%
Achillea millefolium	1 = 1-5%
Phleum pratense	3 = 11-20%
Alopecurus pratensis	1 = 1-5%
Total Vegetative Cover:	75%

Vegetation Type: Type 5 Wet Meadow	
Length of transect in this type: 243 feet	
Plant Species	Cover
Agrostis alba	3 = 11-20%
Alopecurus pratensis	3 = 11-20%
Glyceria elata	2 = 6-10%
Senecio sphaerocephalus	1 = 1-5%
Hordeum brachyantherum	2 = 6-10%
Total Vegetative Cover:	75%

MDT WETLAND MONITORING – VEGETATION TRANSECT

Site: **Big Hole Grazing Association** Date: **August 6, 2008** Examiner: **PBS&J - Traxler**
 Transect Number: **1** Approximate Transect Length: **1247 feet** Compass Direction from Start: **5°** Note: **Page 2**

Vegetation Type: Type 1 Upland	
Length of transect in this type: 327 feet	
Plant Species	Cover
Agropyron trachycaulum	2 = 6-10%
Phleum pratense	3 = 11-20%
Taraxacum officinale	2 = 6-10%
Potentilla gracilis	2 = 6-10%
Agrostis alba	3 = 11-20%
Total Vegetative Cover:	75%

Vegetation Type: Type 5 Wet Meadow	
Length of transect in this type: 132 feet	
Plant Species	Cover
Agrostis alba	2 = 6-10%
Glyceria elata	3 = 11-20%
Alopecurus pratensis	3 = 11-20%
Hordeum brachyantherum	2 = 6-10%
Epilobium ciliatum	1 = 1-5%
Deschampsia cespitosa	1 = 1-5%
Beckmannia syzigachne	2 = 6-10%
Senecio sphaerocephalus	2 = 6-10%
Total Vegetative Cover:	75%

Vegetation Type: Type 1 Upland	
Length of transect in this type: 90 feet	
Plant Species	Cover
Agrostis alba	3 = 11-20%
Poa juncifolia	3 = 11-20%
Agropyron trachycaulum	1 = 1-5%
Phleum pratense	2 = 6-10%
Taraxacum officinale	1 = 1-5%
Hordeum jubatum	2 = 6-10%
Total Vegetative Cover:	80%

Vegetation Type: Type 2 Transitional	
Length of transect in this type: 150 feet	
Plant Species	Cover
Agrostis alba	1 = 1-5%
Epilobium ciliatum	1 = 1-5%
Rumex crispus	+ = < 1%
Deschampsia cespitosa	2 = 6-10%
Carex nebrascensis	1 = 1-5%
Beckmannia syzigachne	2 = 6-10%
Poa pratensis	1 = 1-5%
Phleum pratense	1 = 1-5%
Kochia scoparia	1 = 1-5%
Total Vegetative Cover:	50%

MDT WETLAND MONITORING – VEGETATION TRANSECT

Cover Estimate

+ = < 1% 3 = 11-10%
1 = 1-5% 4 = 21-50%
2 = 6-10% 5 = > 50%

Indicator Class

+ = Obligate
- = Facultative/Wet
0 = Facultative

Source

P = Planted
V = Volunteer

Percent of perimeter developing wetland vegetation (excluding dam/berm structures): 70%

Establish transects perpendicular to the shoreline (or saturated perimeter). The transect should begin in the upland area. Permanently mark this location with a standard metal fencepost. Extend the imaginary transect line towards the center of the wetland, ending at the 3 foot depth (in open water), or at the point where water depths or saturation are maximized. Mark this location with another metal fencepost.

Estimate cover within a 10 foot wide "belt" along the transect length. At a minimum, establish a transect at the windward and leeward sides of the wetland. Remember that the purpose of this sampling is to monitor, not inventory, representative portions of the wetland site.

Comments: _____

BIRD SURVEY – FIELD DATA SHEET

Site: **Big Hole Grazing Association** Date: **8/6/08**

Survey Time: 8:00 am to 5:00 pm

[illegible]

BEHAVIOR CODES

BP = One of a breeding pair

BD = Breeding display

F = Foraging

FO = Flyover

L = Loafing

N = Nesting

HABITAT CODES

AB = Aquatic bed

FO = Forested

I = Island

MA = Marsh

MF = Mud Flat

OW = Open Water

SS = Scrub/Shrub

UP = Upland buffer

WM = Wet meadow

US = Unconsolidated shore

Weather: **Sunny and very hot (90+ degrees by mid afternoon)**

Notes: **Great horned owl** was observed on fence post along Rock Creek.

DATA FORM
ROUTINE WETLAND DETERMINATION
(1987 COE Wetlands Delineation Manual)

Project/Site: Big Hole Grazing Association Applicant/Owner: Montana Department of Transportation Investigators: PBSJ - Traxler	Project No:	Date: 6-Aug-2008 County: Beaverhead State: Montana Plot ID: 1
---	--------------------	--

Do Normal Circumstances exist on the site? <input checked="" type="radio"/> Yes <input type="radio"/> No Is the site significantly disturbed (Atypical Situation:)? <input type="radio"/> Yes <input checked="" type="radio"/> No Is the area a potential Problem Area? <input type="radio"/> Yes <input checked="" type="radio"/> No (If needed, explain on the reverse side)	Community ID: EM/SS Transect ID: Field Location: Rock Creek drainage
--	---

VEGETATION

(USFWS Region No. 9)

Dominant Plant Species(Latin/Common)	Stratum	Indicator	Plant Species(Latin/Common)	Stratum	Indicator
<i>Salix bebbiana</i>	Shrub	FACW	<i>Agrostis alba</i>	Herb	FACW
Willow, Bebb			Redtop		
<i>Salix exigua</i>	Shrub	OBL	<i>Juncus balticus</i>	Herb	OBL
Willow, Sandbar			Rush, Baltic		
<i>Salix lemmonii</i>	Shrub	FACW+	<i>Carex aquatilis</i>	Herb	OBL
Willow, Lemmon's			Sedge, Water		
<i>Alnus incana</i>	Shrub	FACW	<i>Calamagrostis canadensis</i>	Herb	FACW+
Alder, Speckled			Reedgrass, Blue-Joint		
<i>Betula pumila</i>	Shrub	OBL	<i>Hippuris vulgaris</i>	Herb	OBL
Birch, Bog			Mare's-Tail, Common		
<i>Cornus stolonifera</i>	Shrub	FACW			
Dogwood, Red-Osier					

Percent of Dominant Species that are OBL, FACW or FAC: (excluding FAC-) 11/11 = 100.00%	FAC Neutral: 11/11 = 100.00% Numeric Index: 17/11 = 1.55
---	---

Remarks:	Rock Creek floodplain has significant SS component with emergent marsh understory.
-----------------	--

HYDROLOGY

NO Recorded Data(Describe in Remarks): <u>N/A</u> Stream, Lake or Tide Gauge <u>N/A</u> Aerial Photographs <u>N/A</u> Other YES No Recorded Data Field Observations Depth of Surface Water: N/A (in.) Depth to Free Water in Pit: N/A (in.) Depth to Saturated Soil: = 6 (in.)	Wetland Hydrology Indicators Primary Indicators <u>NO</u> Inundated <u>YES</u> Saturated in Upper 12 Inches <u>NO</u> Water Marks <u>YES</u> Drift Lines <u>YES</u> Sediment Deposits <u>YES</u> Drainage Patterns in Wetlands Secondary Indicators <u>NO</u> Oxidized Root Channels in Upper 12 Inches <u>NO</u> Water-Stained Leaves <u>NO</u> Local Soil Survey Data <u>YES</u> FAC-Neutral Test <u>NO</u> Other(Explain in Remarks)
---	---

Remarks:	Plot taken 5 feet from channel. Channel water depth varies from 1-36 inches.
-----------------	--

DATA FORM
ROUTINE WETLAND DETERMINATION
(1987 COE Wetlands Delineation Manual)

Project/Site: Big Hole Grazing Association Applicant/Owner: Montana Department of Transportation Investigators: PBSJ - Traxler	Project No:	Date: 6-Aug-2008 County: Beaverhead State: Montana Plot ID: 1
---	--------------------	--

SOILS

Map Unit Name (Series and Phase): Mooseflat loam, 0-4% slope Map Symbol: 40B Drainage Class: Very Poorly drained Taxonomy (Subgroup):				Mapped Hydric Inclusion? Field Observations Confirm Mapped Type? <input checked="" type="radio"/> Yes <input type="radio"/> No		
Profile Description						
Depth (inches)	Horizon	Matrix Color (Munsell Moist)	Mottle Color (Munsell Moist)	Mottle Abundance/Contrast		Texture, Concretions, Structure, etc
4	A	10YR3/2	N/A	N/A	N/A	Loam, organics
14	B	10YR4/2	10YR5/8	Common	Distinct	Sandy loam, small cobbles
Hydric Soil Indicators: <div style="display: flex; justify-content: space-between;"> <div style="width: 45%;"> <u>NO</u> Histosol <u>NO</u> Histic Epipedon <u>YES</u> Sulfidic Odor <u>NO</u> Aquic Moisture Regime <u>NO</u> Reducing Conditions <u>YES</u> Gleyed or Low Chroma Colors </div> <div style="width: 45%;"> <u>NO</u> Concretions <u>NO</u> High Organic Content in Surface Layer in Sandy Soils <u>NO</u> Organic Streaking in Sandy Soils <u>NO</u> Listed on Local Hydric Soils List <u>NO</u> Listed on National Hydric Soils List <u>NO</u> Other (Explain in Remarks) </div> </div>						
Remarks: Soil profile influenced by periodic flooding and deposits of sand and gravel over time.						

WETLAND DETERMINATION

Hydrophytic Vegetation Present? <input checked="" type="radio"/> Yes <input type="radio"/> No Wetland Hydrology Present? <input checked="" type="radio"/> Yes <input type="radio"/> No Hydric Soils Present? <input checked="" type="radio"/> Yes <input type="radio"/> No	Is the Sampling Point within the Wetland? <input checked="" type="radio"/> Yes <input type="radio"/> No
Remarks:	

DATA FORM
ROUTINE WETLAND DETERMINATION
(1987 COE Wetlands Delineation Manual)

Project/Site: Big Hole Grazing Association Applicant/Owner: Montana Department of Transportation Investigators: PBS&J - Traxler	Project No:	Date: 6-Aug-2008 County: Beaverhead State: Montana Plot ID: 2
--	--------------------	--

Do Normal Circumstances exist on the site? <input checked="" type="radio"/> Yes <input type="radio"/> No Is the site significantly disturbed (Atypical Situation:)? Yes <input checked="" type="radio"/> No Is the area a potential Problem Area? Yes <input checked="" type="radio"/> No (If needed, explain on the reverse side)	Community ID: Wet Meadow Transect ID: Field Location: Wet meadow towards center of site
--	--

VEGETATION

(USFWS Region No. 9)

Dominant Plant Species(Latin/Common)	Stratum	Indicator	Plant Species(Latin/Common)	Stratum	Indicator
<i>Agrostis alba</i> Redtop	Herb	FACW	<i>Juncus balticus</i> Rush,Baltic	Herb	OBL
<i>Alopecurus pratensis</i> Foxtail,Meadow	Herb	FACW	<i>Juncus longistylis</i> Rush,Long-Style	Herb	FACW
<i>Carex nebrascensis</i> Sedge,Nebraska	Herb	OBL	<i>Senecio sphaerocephalus</i> Groundsel,Ball-Head	Herb	FACW
<i>Hordeum brachyantherum</i> Barley,Meadow	Herb	FACW			

Percent of Dominant Species that are OBL, FACW or FAC: (excluding FAC-) 7/7 = 100.00%	FAC Neutral: 7/7 = 100.00% Numeric Index: 12/7 = 1.71
---	--

Remarks: Flat wet meadow wetland towards center of site.	
--	--

HYDROLOGY

<u>NO</u> Recorded Data(Describe in Remarks): <u>N/A</u> Stream, Lake or Tide Gauge <u>N/A</u> Aerial Photographs <u>N/A</u> Other <u>YES</u> No Recorded Data Field Observations Depth of Surface Water: N/A (in.) Depth to Free Water in Pit: N/A (in.) Depth to Saturated Soil: = 2 (in.)	Wetland Hydrology Indicators Primary Indicators <u>NO</u> Inundated <u>YES</u> Saturated in Upper 12 Inches <u>NO</u> Water Marks <u>NO</u> Drift Lines <u>NO</u> Sediment Deposits <u>NO</u> Drainage Patterns in Wetlands Secondary Indicators <u>NO</u> Oxidized Root Channels in Upper 12 Inches <u>NO</u> Water-Stained Leaves <u>NO</u> Local Soil Survey Data <u>YES</u> FAC-Neutral Test <u>NO</u> Other(Explain in Remarks)
---	--

Remarks: high groundwater table. Water levels increased across site with plugging of drainage ditches.	
--	--

DATA FORM
ROUTINE WETLAND DETERMINATION
(1987 COE Wetlands Delineation Manual)

Project/Site: Big Hole Grazing Association Applicant/Owner: Montana Department of Transportation Investigators: PBS&J - Traxler	Project No:	Date: 6-Aug-2008 County: Beaverhead State: Montana Plot ID: 2
--	--------------------	--

SOILS

Map Unit Name (Series and Phase): Foxgulch-copperbasin-Wisdom complex Map Symbol: 15A Drainage Class: Somewhat poorly drained Mapped Hydric Inclusion? Taxonomy (Subgroup): Field Observations Confirm Mapped Type? <input checked="" type="radio"/> Yes No Profile Description					
Depth (inches)	Horizon	Matrix Color (Munsell Moist)	Mottle Color (Munsell Moist)	Mottle Abundance/Contrast	Texture, Concretions, Structure, etc
6	A	10YR3/2	N/A	N/A N/A	Loam, Roots
12	B	10YR3/1	10YR6/8	Common Distinct	Clay loam
Hydric Soil Indicators: <div style="display: flex; justify-content: space-between;"> <div style="width: 48%;"> <u>NO</u> Histosol <u>NO</u> Histic Epipedon <u>NO</u> Sulfidic Odor <u>NO</u> Aquic Moisture Regime <u>NO</u> Reducing Conditions <u>YES</u> Gleyed or Low Chroma Colors </div> <div style="width: 48%;"> <u>NO</u> Concretions <u>NO</u> High Organic Content in Surface Layer in Sandy Soils <u>NO</u> Organic Streaking in Sandy Soils <u>NO</u> Listed on Local Hydric Soils List <u>NO</u> Listed on National Hydric Soils List <u>NO</u> Other (Explain in Remarks) </div> </div>					
Remarks:					

WETLAND DETERMINATION

Hydrophytic Vegetation Present? <input checked="" type="radio"/> Yes No Wetland Hydrology Present? <input checked="" type="radio"/> Yes No Hydric Soils Present? <input checked="" type="radio"/> Yes No	Is the Sampling Point within the Wetland? <input checked="" type="radio"/> Yes No
Remarks:	

DATA FORM
ROUTINE WETLAND DETERMINATION
(1987 COE Wetlands Delineation Manual)

Project/Site: Big Hole Grazing Association Applicant/Owner: Montana Department of Transportation Investigators: PBS&J - Traxler	Project No:	Date: 6-Aug-2008 County: Beaverhead State: Montana Plot ID: 3
--	--------------------	--

Do Normal Circumstances exist on the site? Is the site significantly disturbed (Atypical Situation:)? Is the area a potential Problem Area? (If needed, explain on the reverse side)	<input checked="" type="radio"/> Yes <input type="radio"/> Yes <input type="radio"/> Yes	<input type="radio"/> No <input checked="" type="radio"/> No <input checked="" type="radio"/> No	Community ID: EM Transect ID: Field Location: East side of mitigation area
--	--	--	--

VEGETATION

(USFWS Region No. 9)

Dominant Plant Species(Latin/Common)	Stratum	Indicator	Plant Species(Latin/Common)	Stratum	Indicator
<i>Carex aquatilis</i>	Herb	OBL	<i>Juncus balticus</i>	Herb	OBL
Sedge, Water			Rush, Baltic		
<i>Carex nebrascensis</i>	Herb	OBL	<i>Geum aleppicum</i>	Herb	FACW-
Sedge, Nebraska			Avens, Yellow		
<i>Carex rostrata</i>	Herb	OBL	<i>Salix bebbiana</i>	Shrub	FACW
Sedge, Beaked			Willow, Bebb		
<i>Agrostis alba</i>	Herb	FACW	<i>Salix exigua</i>	Shrub	OBL
Redtop			Willow, Sandbar		

Percent of Dominant Species that are OBL, FACW or FAC: (excluding FAC-) 8/8 = 100.00%	FAC Neutral: 8/8 = 100.00% Numeric Index: 11/8 = 1.38
---	--

Remarks:
 Site is converting from heavily grazed emergent marsh to EM/SS. Significant hummocks throughout.

HYDROLOGY

<u>NO</u> Recorded Data(Describe in Remarks): <u>N/A</u> Stream, Lake or Tide Gauge <u>N/A</u> Aerial Photographs <u>N/A</u> Other <u>YES</u> No Recorded Data Field Observations Depth of Surface Water: N/A (in.) Depth to Free Water in Pit: N/A (in.) Depth to Saturated Soil: = 2 (in.)	Wetland Hydrology Indicators Primary Indicators <u>NO</u> Inundated <u>YES</u> Saturated in Upper 12 Inches <u>NO</u> Water Marks <u>NO</u> Drift Lines <u>NO</u> Sediment Deposits <u>NO</u> Drainage Patterns in Wetlands Secondary Indicators <u>NO</u> Oxidized Root Channels in Upper 12 Inches <u>NO</u> Water-Stained Leaves <u>NO</u> Local Soil Survey Data <u>YES</u> FAC-Neutral Test <u>NO</u> Other(Explain in Remarks)
---	--

Remarks:
 High groundwater table.

DATA FORM
ROUTINE WETLAND DETERMINATION
(1987 COE Wetlands Delineation Manual)

Project/Site: Big Hole Grazing Association Applicant/Owner: Montana Department of Transportation Investigators: PBS&J - Traxler	Project No:	Date: 6-Aug-2008 County: Beaverhead State: Montana Plot ID: 3
--	--------------------	--

SOILS

Map Unit Name (Series and Phase): Foxgulch-copperbasin-Wisdom complex Map Symbol: 15A Drainage Class: Somewhat poorly drained Mapped Hydric Inclusion? Taxonomy (Subgroup): Field Observations Confirm Mapped Type? Yes <input type="radio"/> No <input checked="" type="radio"/>					
Profile Description					
Depth (inches)	Horizon	Matrix Color (Munsell Moist)	Mottle Color (Munsell Moist)	Mottle Abundance/Contrast	Texture, Concretions, Structure, etc
14	A/B	10YR2/1	N/A	N/A N/A	Clay loam
Hydric Soil Indicators: <div style="display: flex; justify-content: space-between;"> <div style="width: 48%;"> <u>NO</u> Histosol <u>NO</u> Histic Epipedon <u>NO</u> Sulfidic Odor <u>NO</u> Aquic Moisture Regime <u>NO</u> Reducing Conditions <u>YES</u> Gleyed or Low Chroma Colors </div> <div style="width: 48%;"> <u>NO</u> Concretions <u>NO</u> High Organic Content in Surface Layer in Sandy Soils <u>NO</u> Organic Streaking in Sandy Soils <u>NO</u> Listed on Local Hydric Soils List <u>NO</u> Listed on National Hydric Soils List <u>NO</u> Other (Explain in Remarks) </div> </div>					
Remarks:					

WETLAND DETERMINATION

Hydrophytic Vegetation Present? <input checked="" type="radio"/> Yes <input type="radio"/> No Wetland Hydrology Present? <input checked="" type="radio"/> Yes <input type="radio"/> No Hydric Soils Present? <input checked="" type="radio"/> Yes <input type="radio"/> No	Is the Sampling Point within the Wetland? <input checked="" type="radio"/> Yes <input type="radio"/> No
Remarks:	

MDT MONTANA WETLAND ASSESSMENT FORM (revised March 2008)

1. Project Name: Big Hole Grazing Association 2. MDT Project #: _____ 3. Control #: _____
 3. Evaluation Date: 8/6/08 4. Evaluator(s): PBS&J - Traxler 5. Wetland/Site #(s): Rock Creek corridor
 6. Wetland Location(s): Township 4 S, Range 16 W, Section 2; Township _____N, Range _____E, Section _____

Approximate Stationing or Roadposts: _____

Watershed: 6 - Upper Missouri County: Beaverhead _ _ _ _ _

7. Evaluating Agency: MDT

Purpose of Evaluation:

☐ Wetland potentially affected by MDT project

☐ Mitigation wetlands; pre-construction

☒ Mitigation wetlands; post-construction

☐ Other _____

8. Wetland Size (acre): 8.0 (visually estimated)
 _____ (measured, e.g. GPS)

9. Assessment Area (AA) Size (acre): 10.0 (visually estimated)
 (see manual for determining AA) _____ (measured, e.g. GPS)

10. CLASSIFICATION OF WETLAND AND AQUATIC HABITATS IN AA (See manual for definitions.)

HGM Class (Brinson)	Class (Cowardin)	Modifier (Cowardin)	Water Regime	% OF AA
Riverine	Rock Bottom		Permanent / Perennial	10
Riverine	Emergent Wetland		Seasonal / Intermittent	20
Riverine	Scrub-Shrub Wetland		Seasonal / Intermittent	70

Comments: _____

11. ESTIMATED RELATIVE ABUNDANCE (of similarly classified sites within the same Major Montana Watershed Basin; see manual.)
common

12. GENERAL CONDITION OF AA

i. Disturbance: Use matrix below to select the appropriate response; see manual for Montana listed noxious weed and aquatic nuisance vegetation species lists.

Conditions within AA	Predominant Conditions Adjacent to (within 500 feet of) AA		
	Managed in predominantly natural state; is not grazed, hayed, logged, or otherwise converted; does not contain roads or buildings; and noxious weed or ANVS cover is ≤15%.	Land not cultivated, but may be moderately grazed or hayed or selectively logged; or has been subject to minor clearing; contains few roads or buildings; noxious weed or ANVS cover is ≤30%.	Land cultivated or heavily grazed or logged; subject to substantial fill placement, grading, clearing, or hydrological alteration; high road or building density; or noxious weed or ANVS cover is >30%.
AA occurs and is managed in predominantly natural state; is not grazed, hayed, logged, or otherwise converted; does not contain roads or occupied buildings; and noxious weed or ANVS cover is ≤15%.	---	low disturbance	---
AA not cultivated, but may be moderately grazed or hayed or selectively logged; or has been subject to relatively minor clearing, fill placement, or hydrological alteration; contains few roads or buildings; noxious weed or ANVS cover is ≤30%.	---	---	---
AA cultivated or heavily grazed or logged; subject to relatively substantial fill placement, grading, clearing, or hydrological alteration; high road or building density; or noxious weed or ANVS cover is >30%.	---	---	---

Comments (types of disturbance, intensity, season, etc.): Area is currently fenced and not subject to grazing or other forms of disturbance.

ii. Prominent noxious, aquatic nuisance, and other exotic vegetation species: _____

iii. Provide brief descriptive summary of AA and surrounding land use/habitat: AA includes the Rock Creek channel and adjacent SS and EM wetland. Surrounding land outside project area is grazed and hayed.

13. STRUCTURAL DIVERSITY (Based on number of "Cowardin" vegetated classes present [do not include unvegetated classes]; see #10 above.)

Existing # of "Cowardin" Vegetated Classes in AA	Initial Rating	Is current management preventing (passive) existence of additional vegetated classes?		Modified Rating
≥3 (or 2 if one is forested) classes	---	NA	NA	NA
2 (or 1 if forested) classes	mod	NA	NA	NA
1 class, but not a monoculture	---	←NO	YES→	---
1 class, monoculture (1 species comprises ≥90% of total cover)	---	NA	NA	NA

Comments: Two vegetated classes in creek corridor.

Wetland/Site #(s): Rock Creek Corridor**14A. HABITAT FOR FEDERALLY LISTED OR PROPOSED THREATENED OR ENDANGERED PLANTS OR ANIMALS****i. AA is Documented (D) or Suspected (S) to contain:** Check box based on definitions in manual.

- Primary or critical habitat (**list species**) ☐ D ☐ S _____
 Secondary habitat (**list species**) ☐ D ☐ S _____
 Incidental habitat (**list species**) ☐ D ☒ S gray wolf
 No usable habitat ☐ S

ii. Rating: Based on the strongest habitat chosen in 14A(i) above, select the corresponding functional point and rating.

Highest Habitat Level	Doc/Primary	Sus/Primary	Doc/Secondary	Sus/Secondary	Doc/Incidental	Sus/Incidental	None
Functional Point/Rating	---	---	---	---	---	.1L	---

Sources for documented use (e.g. observations, records): potential for transient wolves to use project area on rare occasion.**14B. HABITAT FOR PLANTS OR ANIMALS RATED S1, S2, OR S3 BY THE MONTANA NATURAL HERITAGE PROGRAM**

Do not include species listed in 14A above.

i. AA is Documented (D) or Suspected (S) to contain: Check box based on definitions in manual.

- Primary or critical habitat (**list species**) ☐ D ☐ S _____
 Secondary habitat (**list species**) ☐ D ☐ S _____
 Incidental habitat (**list species**) ☒ D ☐ S grayling, westslope cutthroat
 No usable habitat ☐ S

ii. Rating: Based on the strongest habitat chosen in 14A(i) above, select the corresponding functional point and rating.

Highest Habitat Level	Doc/Primary	Sus/Primary	Doc/Secondary	Sus/Secondary	Doc/Incidental	Sus/Incidental	None
S1 Species Functional Point/Rating	---	---	---	---	.2L	---	---
S2 and S3 Species Functional Point/Rating	---	---	---	---	---	---	---

Sources for documented use (e.g. observations, records): MFWP - MFISH**14C. GENERAL WILDLIFE HABITAT RATING****i. Evidence of Overall Wildlife Use in the AA:** Check substantial, moderate, or low based on supporting evidence.☐ **Substantial:** Based on any of the following [check].

- ☐ observations of abundant wildlife #s or high species diversity (during any period)
☐ abundant wildlife sign such as scat, tracks, nest structures, game trails, etc.
☐ presence of extremely limiting habitat features not available in the surrounding area
☐ interview with local biologist with knowledge of the AA

☐ **Minimal:** Based on any of the following [check].

- ☐ few or no wildlife observations during peak use periods
☐ little to no wildlife sign
☐ sparse adjacent upland food sources
☐ interview with local biologist with knowledge of AA

☒ **Moderate:** Based on any of the following [check].

- ☒ observations of scattered wildlife groups or individuals or relatively few species during peak periods
☒ common occurrence of wildlife sign such as scat, tracks, nest structures, game trails, etc.
☒ adequate adjacent upland food sources
☐ interview with local biologist with knowledge of the AA

ii. Wildlife Habitat Features: Working from top to bottom, check appropriate AA attributes in matrix to arrive at rating. Structural diversity is from #13. For class cover to be considered evenly distributed, the most and least prevalent **vegetated** classes must be within 20% of each other in terms of their percent composition of the AA (see #10). Abbreviations for surface water durations are as follows: P/P = permanent/perennial; S/I = seasonal/intermittent; T/E = temporary/ephemeral; and A = absent [see manual for further definitions of these terms].

Structural Diversity (see #13)	<input type="checkbox"/> High								<input checked="" type="checkbox"/> Moderate								<input type="checkbox"/> Low			
Class Cover Distribution (all vegetated classes)	<input type="checkbox"/> Even				<input type="checkbox"/> Uneven				<input type="checkbox"/> Even				<input checked="" type="checkbox"/> Uneven				<input type="checkbox"/> Even			
Duration of Surface Water in ≥ 10% of AA	P/P	S/I	T/E	A	P/P	S/I	T/E	A	P/P	S/I	T/E	A	P/P	S/I	T/E	A	P/P	S/I	T/E	A
<input type="checkbox"/> Low Disturbance at AA (see #12i)	---	---	---	---	---	---	---	---	---	---	---	---	E	---	---	---	---	---	---	---
<input type="checkbox"/> Moderate Disturbance at AA (see #12i)	---	---	---	---	---	---	---	---	---	---	---	---	---	---	---	---	---	---	---	---
<input type="checkbox"/> High Disturbance at AA (see #12i)	---	---	---	---	---	---	---	---	---	---	---	---	---	---	---	---	---	---	---	---

iii. Rating: Use the conclusions from i and ii above and the matrix below to select the functional point and rating.

Evidence of Wildlife Use (i)	Wildlife Habitat Features Rating (ii)			
	<input checked="" type="checkbox"/> Exceptional	<input type="checkbox"/> High	<input type="checkbox"/> Moderate	<input type="checkbox"/> Low
<input type="checkbox"/> Substantial	---	---	---	---
<input checked="" type="checkbox"/> Moderate	.9H	---	---	---
<input type="checkbox"/> Minimal	---	---	---	---

Comments: various bird species, small and large mammals, herps.

Wetland/Site #(s): Rock Creek Corridor**14D. GENERAL FISH HABITAT** ☐ NA (proceed to 14E)

If the AA is not used by fish, fish use is not restorable due to habitat constraints, or is not desired from a management perspective [such as fish entrapped in a canal], then check the NA box and proceed to 14E.

Assess this function if the AA is used by fish or the existing situation is "correctable" such that the AA could be used by fish [i.e., fish use is precluded by perched culvert or other barrier].

Type of Fishery: ☒ Cold Water (CW) ☐ Warm Water (WW) Use the CW or WW guidelines in the manual to complete the matrix.

i. Habitat Quality and Known / Suspected Fish Species in AA: Use matrix to select the functional point and rating.

Duration of Surface Water in AA	<input checked="" type="checkbox"/> Permanent / Perennial						<input type="checkbox"/> Seasonal / Intermittent						<input type="checkbox"/> Temporary / Ephemeral					
Aquatic Hiding / Resting / Escape Cover	<input type="checkbox"/> Optimal		<input checked="" type="checkbox"/> Adequate		<input type="checkbox"/> Poor		<input type="checkbox"/> Optimal		<input type="checkbox"/> Adequate		<input type="checkbox"/> Poor		<input type="checkbox"/> Optimal		<input type="checkbox"/> Adequate		<input type="checkbox"/> Poor	
Thermal Cover: optimal / suboptimal	O	S	O	S	O	S	O	S	O	S	O	S	O	S	O	S	O	S
FWP Tier I fish species	---	---	.8H	---	---	---	---	---	---	---	---	---	---	---	---	---	---	---
FWP Tier II or Native Game fish species	---	---	---	---	---	---	---	---	---	---	---	---	---	---	---	---	---	---
FWP Tier III or Introduced Game fish	---	---	---	---	---	---	---	---	---	---	---	---	---	---	---	---	---	---
FWP Non-Game Tier IV or No fish species	---	---	---	---	---	---	---	---	---	---	---	---	---	---	---	---	---	---

Sources used for identifying fish spp. potentially found in AA: 2008 MFISH on FWP website. Westslope cutthroat, grayling, brook trout, brown trout, rainbow trout, whitefish.

ii. Modified Rating: NOTE: Modified score cannot exceed 1.0 or be less than 0.1.

a) Is fish use of the AA significantly reduced by a culvert, dike, or other man-made structure or activity, or is the waterbody included on the current final MDEQ list of waterbodies in need of TMDL development with listed "Probable Impaired Uses" including cold or warm water fishery or aquatic life support, or do aquatic nuisance plant or animal species (see **Appendix E**) occur in fish habitat? ☐ YES, reduce score in i by 0.1 = ___ or ☒ NO

b) Does the AA contain a documented spawning area or other critical habitat feature (i.e., sanctuary pool, upwelling area; specify in comments) for native fish or introduced game fish? ☐ YES, add to score in i or iia 0.1 = ___ or ☒ NO

iii. Final Score and Rating: .8H Comments: _____**14E. FLOOD ATTENUATION** ☐ NA (proceed to 14F)

Applies only to wetlands that are subject to flooding via in-channel or overbank flow.

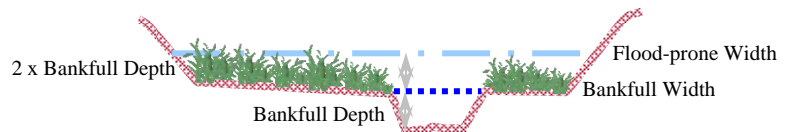
If wetlands in AA are not flooded from in-channel or overbank flow, check the NA box and proceed to 14F.

Entrenchment Ratio (ER) Estimation (see manual for additional guidance). Entrenchment ratio = (flood-prone width) / (bankfull width).

Flood-prone width = estimated horizontal projection of where 2 X maximum bankfull depth elevation intersects the floodplain on each side of the stream.

$$\frac{30}{10} = 3$$

flood prone width / bankfull width = entrenchment ratio



Slightly Entrenched ER ≥ 2.2			Moderately Entrenched ER = 1.41 – 2.2		Entrenched ER = 1.0 – 1.4		
C stream type	D stream type	E stream type	B stream type		A stream type	F stream type	G stream type

i. Rating: Working from top to bottom, use the matrix below to select the functional point and rating.

Estimated or Calculated Entrenchment (Rosgen 1994, 1996)	<input checked="" type="checkbox"/> Slightly Entrenched C, D, E stream types			<input type="checkbox"/> Moderately Entrenched B stream type			<input type="checkbox"/> Entrenched A, F, G stream types		
Percent of Flooded Wetland Classified as Forested and/or Scrub/Shrub	<input type="checkbox"/> 75%	<input checked="" type="checkbox"/> 25-75%	<input type="checkbox"/> <25%	<input type="checkbox"/> 75%	<input type="checkbox"/> 25-75%	<input type="checkbox"/> <25%	<input type="checkbox"/> 75%	<input type="checkbox"/> 25-75%	<input type="checkbox"/> <25%
AA contains no outlet or restricted outlet	---	---	---	---	---	---	---	---	---
AA contains unrestricted outlet	---	.8H	---	---	---	---	---	---	---

ii. Are ≥10 acres of wetland in the AA subject to flooding AND are man-made features which may be significantly damaged by floods located within 0.5 mile downstream of the AA? ☐ YES ☒ NO Comments: no structures

Wetland/Site #(s): Rock Creek Corridor**14F. SHORT AND LONG TERM SURFACE WATER STORAGE** ☐ NA (proceed to 14G)

Applies to wetlands that flood or pond from overbank or in-channel flow, precipitation, upland surface flow, or groundwater flow.
If no wetlands in the AA are subject to flooding or ponding, then check the NA box and proceed to 14G.

- i. **Rating:** Working from top to bottom, use the matrix below to select the functional point and rating. Abbreviations for surface water durations are as follows: P/P = permanent/perennial; S/I = seasonal/intermittent; and T/E = temporary/ephemeral [see manual for further definitions of these terms].

Estimated Maximum Acre Feet of Water Contained in Wetlands within the AA that are Subject to Periodic Flooding or Ponding	<input type="checkbox"/> >5 acre feet			<input checked="" type="checkbox"/> 1.1 to 5 acre feet			<input type="checkbox"/> ≤1 acre foot		
Duration of Surface Water at Wetlands within the AA	<input type="checkbox"/> P/P	<input type="checkbox"/> S/I	<input type="checkbox"/> T/E	<input checked="" type="checkbox"/> P/P	<input type="checkbox"/> S/I	<input type="checkbox"/> T/E	<input type="checkbox"/> P/P	<input type="checkbox"/> S/I	<input type="checkbox"/> T/E
Wetlands in AA flood or pond ≥ 5 out of 10 years	---	---	---	.8H	---	---	---	---	---
Wetlands in AA flood or pond < 5 out of 10 years	---	---	---	---	---	---	---	---	---

Comments: _____

14G. SEDIMENT / NUTRIENT / TOXICANT / RETENTION AND REMOVAL ☐ NA (proceed to 14H)

Applies to wetland with potential to receive sediments, nutrients, or toxicants through influx of surface or ground water or direct input.
If no wetlands in the AA are subject to such input, check the NA box and proceed to 14H.

- i. **Rating:** Working from top to bottom, use the matrix below to select the functional point and rating.

Sediment, Nutrient, and Toxicant Input Levels within AA	AA receives or surrounding land use has potential to deliver sediments, nutrients, or compounds at levels such that other functions are not substantially impaired. Minor sedimentation, sources of nutrients or toxicants, or signs of eutrophication present.				Waterbody is on MDEQ list of waterbodies in need of TMDL development for "probable causes" related to sediment, nutrients, or toxicants or AA receives or surrounding land use has potential to deliver high levels of sediments, nutrients, or compounds such that other functions are substantially impaired. Major sedimentation, sources of nutrients or toxicants, or signs of eutrophication present.			
% Cover of Wetland Vegetation in AA	<input checked="" type="checkbox"/> ≥ 70%		<input type="checkbox"/> < 70%		<input type="checkbox"/> ≥ 70%		<input type="checkbox"/> < 70%	
Evidence of Flooding / Ponding in AA	<input checked="" type="checkbox"/> Yes	<input type="checkbox"/> No	<input type="checkbox"/> Yes	<input type="checkbox"/> No	<input type="checkbox"/> Yes	<input type="checkbox"/> No	<input type="checkbox"/> Yes	<input type="checkbox"/> No
AA contains no or restricted outlet	---	---	---	---	---	---	---	---
AA contains unrestricted outlet	.9H	---	---	---	---	---	---	---

Comments: _____

14H. SEDIMENT / SHORELINE STABILIZATION ☐ NA (proceed to 14I)

Applies only if AA occurs on or within the banks of a river, stream, or other natural or man-made drainage, or on the shoreline of a standing water body which is subject to wave action.
If 14H does not apply, check the NA box and proceed to 14I.

% Cover of <u>Wetland</u> Streambank or Shoreline by Species with Stability Ratings of ≥6 (see Appendix F).	Duration of Surface Water Adjacent to Rooted Vegetation		
	<input checked="" type="checkbox"/> Permanent / Perennial	<input type="checkbox"/> Seasonal / Intermittent	<input type="checkbox"/> Temporary / Ephemeral
<input checked="" type="checkbox"/> ≥ 65%	1H	---	---
<input type="checkbox"/> 35-64%	---	---	---
<input type="checkbox"/> < 35%	---	---	---

Comments: _____

14I. PRODUCTION EXPORT / FOOD CHAIN SUPPORT

- i. **Level of Biological Activity:** Synthesis of wildlife and fish habitat rates (select).

General Fish Habitat Rating (14Diii)	General Wildlife Habitat Rating (14Ciii)		
	<input checked="" type="checkbox"/> E/H	<input type="checkbox"/> M	<input type="checkbox"/> L
<input checked="" type="checkbox"/> E/H	H	H	---
<input type="checkbox"/> M	---	---	---
<input type="checkbox"/> L	---	---	---
<input type="checkbox"/> NA	---	---	---

- ii. **Rating:** Working from top to bottom, use the matrix below to select the functional point and rating. Factor A = acreage of vegetated wetland component in the AA; Factor B = level of biological activity rating from above (14Ii); Factor C = whether or not the AA contains a surface or subsurface outlet; the final three rows pertain to the duration of surface water in the AA, where P/P, S/I, and T/E were previously defined, and A = "absent" [see manual for further definitions of these terms].

A	<input checked="" type="checkbox"/> Vegetated Component >5 acres						<input type="checkbox"/> Vegetated Component 1-5 acres						<input type="checkbox"/> Vegetated Component <1 acre					
B	<input checked="" type="checkbox"/> High		<input type="checkbox"/> Moderate		<input type="checkbox"/> Low		<input type="checkbox"/> High		<input type="checkbox"/> Moderate		<input type="checkbox"/> Low		<input type="checkbox"/> High		<input type="checkbox"/> Moderate		<input type="checkbox"/> Low	
C	Yes	No	Yes	No	Yes	No	Yes	No	Yes	No	Yes	No	Yes	No	Yes	No	Yes	No
P/P	1H	---	---	---	---	---	---	---	---	---	---	---	---	---	---	---	---	---
S/I	---	---	---	---	---	---	---	---	---	---	---	---	---	---	---	---	---	---
T/E/A	---	---	---	---	---	---	---	---	---	---	---	---	---	---	---	---	---	---

Wetland/Site #(s): Rock Creek Corridor**14I. PRODUCTION EXPORT / FOOD CHAIN SUPPORT** (continued)iii. **Modified Rating:** Note: Modified score cannot exceed 1.0 or be less than 0.1.**Vegetated Upland Buffer:** Area with $\geq 30\%$ plant cover, $\leq 15\%$ noxious weed or ANVS cover, AND that is not subjected to periodic mechanical mowing or clearing (unless for weed control).Is there an average ≥ 50 -foot wide vegetated upland buffer around $\geq 75\%$ of the AA's perimeter? ☒ **YES**, add 0.1 to score in ii = ____ ☐ **NO**iv. **Final Score and Rating:** 1H **Comments:** ____**14J. GROUNDWATER DISCHARGE / RECHARGE**

Check the appropriate indicators in i and ii below.

i. Discharge Indicators

- ☐ The AA is a slope wetland.
☒ Springs or seeps are known or observed.
☐ Vegetation growing during dormant season/drought.
☐ Wetland occurs at the toe of a natural slope.
☐ Seeps are present at the wetland edge.
☐ AA permanently flooded during drought periods.
☐ Wetland contains an outlet, but no inlet.
☐ Shallow water table and the site is saturated to the surface.
☐ Other: ____

ii. Recharge Indicators

- ☐ Permeable substrate present without underlying impeding layer.
☐ Wetland contains inlet but no outlet.
☐ Stream is a known 'losing' stream. Discharge volume decreases.
☐ Other: ____

iii. **Rating:** Use the information from i and ii above and the table below to select the functional point and rating.

Criteria	Duration of Saturation at AA Wetlands <u>FROM GROUNDWATER DISCHARGE</u> or <u>WITH WATER THAT IS RECHARGING THE GROUNDWATER SYSTEM</u>			
	<input checked="" type="checkbox"/> P/P	<input type="checkbox"/> S/I	<input type="checkbox"/> T	<input type="checkbox"/> None
<input type="checkbox"/> Groundwater Discharge or Recharge	1H	---	---	---
<input type="checkbox"/> Insufficient Data/Information	---			

Comments: ____

14K. UNIQUENESSi. **Rating:** Working from top to bottom, use the matrix below to select the functional point and rating.

Replacement Potential	AA contains fen, bog, warm springs or mature (>80 yr-old) forested wetland OR plant association listed as "S1" by the MTNHP			AA does not contain previously cited rare types AND structural diversity (#13) is high OR contains plant association listed as "S2" by the MTNHP			AA does not contain previously cited rare types OR associations AND structural diversity (#13) is low-moderate		
Estimated Relative Abundance (#11)	<input type="checkbox"/> Rare	<input type="checkbox"/> Common	<input type="checkbox"/> Abundant	<input type="checkbox"/> Rare	<input type="checkbox"/> Common	<input type="checkbox"/> Abundant	<input type="checkbox"/> Rare	<input checked="" type="checkbox"/> Common	<input type="checkbox"/> Abundant
<input type="checkbox"/> Low Disturbance at AA (#12i)	---	---	---	---	---	---	---	.4M	---
<input type="checkbox"/> Moderate Disturbance at AA (#12i)	---	---	---	---	---	---	---	---	---
<input type="checkbox"/> High Disturbance at AA (#12i)	---	---	---	---	---	---	---	---	---

Comments: ____

14L. RECREATION / EDUCATION POTENTIAL☐ NA (proceed to Overall Summary and Rating page)

Affords 'bonus' points if AA provides a recreational or educational opportunity.

i. **Is the AA a known or potential recreational or educational site?** ☒ **YES**, go to ii. ☐ **NO**, check the NA box.ii. **Check categories that apply to the AA:** ☐ Educational/Scientific Study ☒ Consumptive Recreational ☒ Non-consumptive recreational
☐ Other: ____iii. **Rating:** Use the matrix below to select the functional point and rating.

Known or Potential Recreational or Educational Area	Known	Potential
Public ownership or public easement with general public access (no permission required)	---	---
Private ownership with general public access (no permission required)	---	---
Private or public ownership without general public access, or requiring permission for public access	---	.05L

Comments: ____

15. GENERAL SITE NOTES: fishing and hunting by permission.

Wetland/Site #(s): Rock Creek Corridor

Function & Value Variables	Rating – Actual Functional Points	Possible Functional Points	Functional Units: Actual Points x Estimated AA Acreage	Indicate the Four Most Prominent Functions with an Asterisk
A. Listed / Proposed T&E Species Habitat	low 0.10	1.00	1	
B. MT Natural Heritage Program Species Habitat	low 0.20	1.00	2	
C. General Wildlife Habitat	high 0.90	1.00	9	
D. General Fish Habitat	high 0.80	1.00	8	
E. Flood Attenuation	high 0.80	1.00	8	
F. Short and Long Term Surface Water Storage	high 0.80	1.00	8	
G. Sediment / Nutrient / Toxicant Removal	high 0.90	1.00	9	
H. Sediment / Shoreline Stabilization	high 1.00	1.00	10	
I. Production Export / Food Chain Support	high 1.00	1.00	10	
J. Groundwater Discharge / Recharge	high 1.00	1.00	10	
K. Uniqueness	mod 0.40	1.00	4	
L. Recreation / Education Potential (bonus point)	low 0.05		0.5	
Total Points	7.95	11	79.5 Total Functional Units	
Percent of Possible Score 72% (round to nearest whole number)				

Category I Wetland: (must satisfy **one** of the following criteria; otherwise go to Category II)

- ☐ Score of 1 functional point for Listed/Proposed Threatened or Endangered Species; **or**
☐ Score of 1 functional point for Uniqueness; **or**
☐ Score of 1 functional point for Flood Attenuation **and** answer to Question 14E.ii is "yes"; **or**
☐ Percent of possible score > 80% (round to nearest whole #).

Category II Wetland: (Criteria for Category I not satisfied **and** meets any **one** of the following criteria; otherwise go to Category IV)

- ☐ Score of 1 functional point for MT Natural Heritage Program Species Habitat; **or**
☒ Score of .9 or 1 functional point for General Wildlife Habitat; **or**
☐ Score of .9 or 1 functional point for General Fish Habitat; **or**
☐ "High" to "Exceptional" ratings for **both** General Wildlife Habitat **and** General Fish/Aquatic Habitat; **or**
☐ Score of .9 functional point for Uniqueness; **or**
☒ Percent of possible score > 65% (round to nearest whole #).

☐ **Category III Wetland:** (Criteria for Categories I, II, or IV not satisfied)**Category IV Wetland:** (Criteria for Categories I or II are not satisfied and all of the following criteria are met; if not go to Category III)

- ☐ "Low" rating for Uniqueness; **and**
☐ Vegetated wetland component < 1 acre (do not include upland vegetated buffer); **and**
☐ Percent of possible score < 35% (round to nearest whole #).

OVERALL ANALYSIS AREA (AA) RATING: Check the appropriate category based on the criteria outlined above.
☐ I ☒ II ☐ III ☐ IV

MDT MONTANA WETLAND ASSESSMENT FORM (revised March 2008)

1. **Project Name:** Big Hole Grazing Association 2. **MDT Project #:** _____ 3. **Control #:** _____
 3. **Evaluation Date:** 8/6/08 4. **Evaluator(s):** PBS&J - Traxler 5. **Wetland/Site #(s):** All wetlands outside Rock Creek corridor
 6. **Wetland Location(s):** Township 4 S, Range 16 W, Section 2; Township _____, Range _____, Section _____

Approximate Stationing or Roadposts: _____

Watershed: 6 - Upper Missouri **County:** Beaverhead _____

7. **Evaluating Agency:** MDT

Purpose of Evaluation:

- ☐ Wetland potentially affected by MDT project
☐ Mitigation wetlands; pre-construction
☒ Mitigation wetlands; post-construction
☐ Other _____

8. **Wetland Size (acre):** _____ (visually estimated)

42 (measured, e.g. GPS)

9. **Assessment Area (AA) Size (acre):** _____ (visually estimated)

(see manual for determining AA) 39.81 (measured, e.g. GPS)

10. CLASSIFICATION OF WETLAND AND AQUATIC HABITATS IN AA (See manual for definitions.)

HGM Class (Brinson)	Class (Cowardin)	Modifier (Cowardin)	Water Regime	% OF AA
Slope	Emergent Wetland		Permanent / Perennial	20
Slope	Scrub-Shrub Wetland		Seasonal / Intermittent	10
Slope	Emergent Wetland		Seasonal / Intermittent	70

Comments: Springs from north and high groundwater table supply hydrology to the site

11. **ESTIMATED RELATIVE ABUNDANCE** (of similarly classified sites within the same Major Montana Watershed Basin; see manual.)
common

12. GENERAL CONDITION OF AA

- i. **Disturbance:** Use matrix below to select the appropriate response; see manual for Montana listed noxious weed and aquatic nuisance vegetation species lists.

Conditions within AA	Predominant Conditions Adjacent to (within 500 feet of) AA		
	Managed in predominantly natural state; is not grazed, hayed, logged, or otherwise converted; does not contain roads or buildings; and noxious weed or ANVS cover is ≤15%.	Land not cultivated, but may be moderately grazed or hayed or selectively logged; or has been subject to minor clearing; contains few roads or buildings; noxious weed or ANVS cover is ≤30%.	Land cultivated or heavily grazed or logged; subject to substantial fill placement, grading, clearing, or hydrological alteration; high road or building density; or noxious weed or ANVS cover is >30%.
AA occurs and is managed in predominantly natural state; is not grazed, hayed, logged, or otherwise converted; does not contain roads or occupied buildings; and noxious weed or ANVS cover is ≤15%.	---	low disturbance	---
AA not cultivated, but may be moderately grazed or hayed or selectively logged; or has been subject to relatively minor clearing, fill placement, or hydrological alteration; contains few roads or buildings; noxious weed or ANVS cover is ≤30%.	---	---	---
AA cultivated or heavily grazed or logged; subject to relatively substantial fill placement, grading, clearing, or hydrological alteration; high road or building density; or noxious weed or ANVS cover is >30%.	---	---	---

Comments (types of disturbance, intensity, season, etc.): _____

- ii. **Prominent noxious, aquatic nuisance, and other exotic vegetation species:** _____

- iii. **Provide brief descriptive summary of AA and surrounding land use/habitat:** AA is large wet meadow, emergent marsh and shrub/scrub wetland that has been restored by plugging man-made drain ditches. AA is not grazed or hayed. Surrounding land is moderately grazed and managed for agriculture.

13. STRUCTURAL DIVERSITY (Based on number of "Cowardin" vegetated classes present [do not include unvegetated classes]; see #10 above.)

Existing # of "Cowardin" Vegetated Classes in AA	Initial Rating	Is current management preventing (passive) existence of additional vegetated classes?	Modified Rating
≥3 (or 2 if one is forested) classes	---	NA	NA
2 (or 1 if forested) classes	mod	NA	NA
1 class, but not a monoculture	---	←NO	---
1 class, monoculture (1 species comprises ≥90% of total cover)	---	NA	NA

Comments: _____

Wetland/Site #(s): all wetlands outside Rock Creek corridor**14A. HABITAT FOR FEDERALLY LISTED OR PROPOSED THREATENED OR ENDANGERED PLANTS OR ANIMALS****i. AA is Documented (D) or Suspected (S) to contain:** Check box based on definitions in manual.

- Primary or critical habitat (**list species**) ☐ D ☐ S _____
 Secondary habitat (**list species**) ☐ D ☐ S _____
 Incidental habitat (**list species**) ☐ D ☒ S gray wolf
 No usable habitat ☐ S

ii. Rating: Based on the strongest habitat chosen in 14A(i) above, select the corresponding functional point and rating.

Highest Habitat Level	Doc/Primary	Sus/Primary	Doc/Secondary	Sus/Secondary	Doc/Incidental	Sus/Incidental	None
Functional Point/Rating	---	---	---	---	---	.1L	---

Sources for documented use (e.g. observations, records): _____

14B. HABITAT FOR PLANTS OR ANIMALS RATED S1, S2, OR S3 BY THE MONTANA NATURAL HERITAGE PROGRAM

Do not include species listed in 14A above.

i. AA is Documented (D) or Suspected (S) to contain: Check box based on definitions in manual.

- Primary or critical habitat (**list species**) ☐ D ☐ S _____
 Secondary habitat (**list species**) ☐ D ☐ S _____
 Incidental habitat (**list species**) ☐ D ☒ S bald eagle
 No usable habitat ☐ S

ii. Rating: Based on the strongest habitat chosen in 14A(i) above, select the corresponding functional point and rating.

Highest Habitat Level	Doc/Primary	Sus/Primary	Doc/Secondary	Sus/Secondary	Doc/Incidental	Sus/Incidental	None
S1 Species Functional Point/Rating	---	---	---	---	---	---	---
S2 and S3 Species Functional Point/Rating	---	---	---	---	---	.1L	---

Sources for documented use (e.g. observations, records): _____

14C. GENERAL WILDLIFE HABITAT RATING**i. Evidence of Overall Wildlife Use in the AA:** Check substantial, moderate, or low based on supporting evidence.☐ **Substantial:** Based on any of the following [check].

- ☐ observations of abundant wildlife #s or high species diversity (during any period)
☐ abundant wildlife sign such as scat, tracks, nest structures, game trails, etc.
☐ presence of extremely limiting habitat features not available in the surrounding area
☐ interview with local biologist with knowledge of the AA

☐ **Minimal:** Based on any of the following [check].

- ☐ few or no wildlife observations during peak use periods
☐ little to no wildlife sign
☐ sparse adjacent upland food sources
☐ interview with local biologist with knowledge of AA

☒ **Moderate:** Based on any of the following [check].

- ☒ observations of scattered wildlife groups or individuals or relatively few species during peak periods
☒ common occurrence of wildlife sign such as scat, tracks, nest structures, game trails, etc.
☒ adequate adjacent upland food sources
☐ interview with local biologist with knowledge of the AA

ii. Wildlife Habitat Features: Working from top to bottom, check appropriate AA attributes in matrix to arrive at rating. Structural diversity is from #13. For class cover to be considered evenly distributed, the most and least prevalent **vegetated** classes must be within 20% of each other in terms of their percent composition of the AA (see #10). Abbreviations for surface water durations are as follows: P/P = permanent/perennial; S/I = seasonal/intermittent; T/E = temporary/ephemeral; and A = absent [see manual for further definitions of these terms].

Structural Diversity (see #13)	<input type="checkbox"/> High								<input checked="" type="checkbox"/> Moderate								<input type="checkbox"/> Low			
	<input type="checkbox"/> Even				<input type="checkbox"/> Uneven				<input type="checkbox"/> Even				<input checked="" type="checkbox"/> Uneven				<input type="checkbox"/> Even			
Class Cover Distribution (all vegetated classes)	P/P	S/I	T/E	A	P/P	S/I	T/E	A	P/P	S/I	T/E	A	P/P	S/I	T/E	A	P/P	S/I	T/E	A
Duration of Surface Water in ≥ 10% of AA																				
<input checked="" type="checkbox"/> Low Disturbance at AA (see #12i)	---	---	---	---	---	---	---	---	---	---	---	---	---	H	---	---	---	---	---	---
<input type="checkbox"/> Moderate Disturbance at AA (see #12i)	---	---	---	---	---	---	---	---	---	---	---	---	---	---	---	---	---	---	---	---
<input type="checkbox"/> High Disturbance at AA (see #12i)	---	---	---	---	---	---	---	---	---	---	---	---	---	---	---	---	---	---	---	---

iii. Rating: Use the conclusions from i and ii above and the matrix below to select the functional point and rating.

Evidence of Wildlife Use (i)	Wildlife Habitat Features Rating (ii)			
	<input type="checkbox"/> Exceptional	<input checked="" type="checkbox"/> High	<input type="checkbox"/> Moderate	<input type="checkbox"/> Low
<input type="checkbox"/> Substantial	---	---	---	---
<input checked="" type="checkbox"/> Moderate	---	.7M	---	---
<input type="checkbox"/> Minimal	---	---	---	---

Comments: various bird species, mammals, herps. Large area with significant wildlife habitat.

Wetland/Site #(s): all wetlands outside Rock Creek corridor**14D. GENERAL FISH HABITAT** ☒ **NA** (proceed to 14E)

If the AA is not used by fish, fish use is not restorable due to habitat constraints, or is not desired from a management perspective [such as fish entrapped in a canal], then check the NA box and proceed to 14E.

Assess this function if the AA is used by fish or the existing situation is "correctable" such that the AA could be used by fish [i.e., fish use is precluded by perched culvert or other barrier].

Type of Fishery: ☐ Cold Water (CW) ☐ Warm Water (WW) Use the CW or WW guidelines in the manual to complete the matrix.

i. Habitat Quality and Known / Suspected Fish Species in AA: Use matrix to select the functional point and rating.

Duration of Surface Water in AA	<input type="checkbox"/> Permanent / Perennial						<input type="checkbox"/> Seasonal / Intermittent						<input type="checkbox"/> Temporary / Ephemeral					
Aquatic Hiding / Resting / Escape Cover	<input type="checkbox"/> Optimal		<input type="checkbox"/> Adequate		<input type="checkbox"/> Poor		<input type="checkbox"/> Optimal		<input type="checkbox"/> Adequate		<input type="checkbox"/> Poor		<input type="checkbox"/> Optimal		<input type="checkbox"/> Adequate		<input type="checkbox"/> Poor	
Thermal Cover: optimal / suboptimal	O	S	O	S	O	S	O	S	O	S	O	S	O	S	O	S	O	S
FWP Tier I fish species	---	---	---	---	---	---	---	---	---	---	---	---	---	---	---	---	---	---
FWP Tier II or Native Game fish species	---	---	---	---	---	---	---	---	---	---	---	---	---	---	---	---	---	---
FWP Tier III or Introduced Game fish	---	---	---	---	---	---	---	---	---	---	---	---	---	---	---	---	---	---
FWP Non-Game Tier IV or No fish species	---	---	---	---	---	---	---	---	---	---	---	---	---	---	---	---	---	---

Sources used for identifying fish spp. potentially found in AA: _____

ii. Modified Rating: NOTE: Modified score cannot exceed 1.0 or be less than 0.1.

a) Is fish use of the AA significantly reduced by a culvert, dike, or other man-made structure or activity, **or** is the waterbody included on the current final MDEQ list of waterbodies in need of TMDL development with listed "Probable Impaired Uses" including cold or warm water fishery or aquatic life support, **or** do aquatic nuisance plant or animal species (see **Appendix E**) occur in fish habitat? ☐ **YES**, reduce score in i by 0.1 = ____ or ☐ **NO**

b) Does the AA contain a documented spawning area or other critical habitat feature (i.e., sanctuary pool, upwelling area; specify in comments) for native fish or introduced game fish? ☐ **YES**, add to score in i or **ii** a 0.1 = ____ or ☐ **NO**

iii. Final Score and Rating: _ **Comments:** _____**14E. FLOOD ATTENUATION** ☒ **NA** (proceed to 14F)

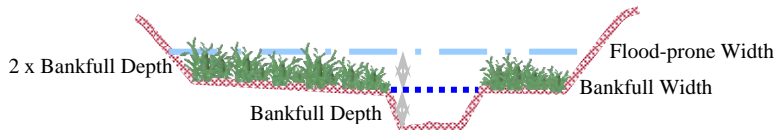
Applies only to wetlands that are subject to flooding via in-channel or overbank flow.

If wetlands in AA are not flooded from in-channel or overbank flow, check the NA box and proceed to 14F.

Entrenchment Ratio (ER) Estimation (see manual for additional guidance). Entrenchment ratio = (flood-prone width) / (bankfull width).

Flood-prone width = estimated horizontal projection of where 2 X maximum bankfull depth elevation intersects the floodplain on each side of the stream.

_____ / _____ = _____
flood prone width / bankfull width = entrenchment ratio



Slightly Entrenched ER ≥ 2.2			Moderately Entrenched ER = 1.41 – 2.2		Entrenched ER = 1.0 – 1.4		
C stream type	D stream type	E stream type	B stream type		A stream type	F stream type	G stream type

i. Rating: Working from top to bottom, use the matrix below to select the functional point and rating.

Estimated or Calculated Entrenchment (Rosgen 1994, 1996)	<input type="checkbox"/> Slightly Entrenched C, D, E stream types			<input type="checkbox"/> Moderately Entrenched B stream type			<input type="checkbox"/> Entrenched A, F, G stream types		
Percent of Flooded Wetland Classified as Forested and/or Scrub/Shrub	<input type="checkbox"/> 75%	<input type="checkbox"/> 25-75%	<input type="checkbox"/> <25%	<input type="checkbox"/> 75%	<input type="checkbox"/> 25-75%	<input type="checkbox"/> <25%	<input type="checkbox"/> 75%	<input type="checkbox"/> 25-75%	<input type="checkbox"/> <25%
AA contains no outlet or restricted outlet	---	---	---	---	---	---	---	---	---
AA contains unrestricted outlet	---	---	---	---	---	---	---	---	---

ii. Are ≥10 acres of wetland in the AA subject to flooding AND are man-made features which may be significantly damaged by floods located within 0.5 mile downstream of the AA? ☐ **YES** ☐ **NO** **Comments:** _____

Wetland/Site #(s): all wetlands outside Rock Creek corridor**14F. SHORT AND LONG TERM SURFACE WATER STORAGE** ☐ NA (proceed to 14G)

Applies to wetlands that flood or pond from overbank or in-channel flow, precipitation, upland surface flow, or groundwater flow.
If no wetlands in the AA are subject to flooding or ponding, then check the NA box and proceed to 14G.

- i. **Rating:** Working from top to bottom, use the matrix below to select the functional point and rating. Abbreviations for surface water durations are as follows: P/P = permanent/perennial; S/I = seasonal/intermittent; and T/E = temporary/ephemeral [see manual for further definitions of these terms].

Estimated Maximum Acre Feet of Water Contained in Wetlands within the AA that are Subject to Periodic Flooding or Ponding	<input checked="" type="checkbox"/> >5 acre feet			<input type="checkbox"/> 1.1 to 5 acre feet			<input type="checkbox"/> ≤1 acre foot		
Duration of Surface Water at Wetlands within the AA	<input checked="" type="checkbox"/> P/P	<input type="checkbox"/> S/I	<input type="checkbox"/> T/E	<input type="checkbox"/> P/P	<input type="checkbox"/> S/I	<input type="checkbox"/> T/E	<input type="checkbox"/> P/P	<input type="checkbox"/> S/I	<input type="checkbox"/> T/E
Wetlands in AA flood or pond ≥ 5 out of 10 years	1H	---	---	---	---	---	---	---	---
Wetlands in AA flood or pond < 5 out of 10 years	---	---	---	---	---	---	---	---	---

Comments: _____

14G. SEDIMENT / NUTRIENT / TOXICANT / RETENTION AND REMOVAL ☐ NA (proceed to 14H)

Applies to wetland with potential to receive sediments, nutrients, or toxicants through influx of surface or ground water or direct input.
If no wetlands in the AA are subject to such input, check the NA box and proceed to 14H.

- i. **Rating:** Working from top to bottom, use the matrix below to select the functional point and rating.

Sediment, Nutrient, and Toxicant Input Levels within AA	AA receives or surrounding land use has potential to deliver sediments, nutrients, or compounds at levels such that other functions are not substantially impaired. Minor sedimentation, sources of nutrients or toxicants, or signs of eutrophication present.				Waterbody is on MDEQ list of waterbodies in need of TMDL development for "probable causes" related to sediment, nutrients, or toxicants or AA receives or surrounding land use has potential to deliver high levels of sediments, nutrients, or compounds such that other functions are substantially impaired. Major sedimentation, sources of nutrients or toxicants, or signs of eutrophication present.			
% Cover of Wetland Vegetation in AA	<input checked="" type="checkbox"/> ≥ 70%		<input type="checkbox"/> < 70%		<input type="checkbox"/> ≥ 70%		<input type="checkbox"/> < 70%	
Evidence of Flooding / Ponding in AA	<input checked="" type="checkbox"/> Yes	<input type="checkbox"/> No	<input type="checkbox"/> Yes	<input type="checkbox"/> No	<input type="checkbox"/> Yes	<input type="checkbox"/> No	<input type="checkbox"/> Yes	<input type="checkbox"/> No
AA contains no or restricted outlet	1H	---	---	---	---	---	---	---
AA contains unrestricted outlet	---	---	---	---	---	---	---	---

Comments: _____

14H. SEDIMENT / SHORELINE STABILIZATION ☒ NA (proceed to 14I)

Applies only if AA occurs on or within the banks of a river, stream, or other natural or man-made drainage, or on the shoreline of a standing water body which is subject to wave action.
If 14H does not apply, check the NA box and proceed to 14I.

% Cover of <u>Wetland</u> Streambank or Shoreline by Species with Stability Ratings of ≥6 (see Appendix F).	Duration of Surface Water Adjacent to Rooted Vegetation		
	<input type="checkbox"/> Permanent / Perennial	<input type="checkbox"/> Seasonal / Intermittent	<input type="checkbox"/> Temporary / Ephemeral
<input type="checkbox"/> ≥ 65%	---	---	---
<input type="checkbox"/> 35-64%	---	---	---
<input type="checkbox"/> < 35%	---	---	---

Comments: _____

14I. PRODUCTION EXPORT / FOOD CHAIN SUPPORT

- i. **Level of Biological Activity:** Synthesis of wildlife and fish habitat rates (select).

General Fish Habitat Rating (14Diii)	General Wildlife Habitat Rating (14Ciii)		
	<input type="checkbox"/> E/H	<input checked="" type="checkbox"/> M	<input type="checkbox"/> L
<input type="checkbox"/> E/H	---	---	---
<input type="checkbox"/> M	---	---	---
<input type="checkbox"/> L	---	---	---
<input checked="" type="checkbox"/> NA	---	M	---

- ii. **Rating:** Working from top to bottom, use the matrix below to select the functional point and rating. Factor A = acreage of vegetated wetland component in the AA; Factor B = level of biological activity rating from above (14Ii); Factor C = whether or not the AA contains a surface or subsurface outlet; the final three rows pertain to the duration of surface water in the AA, where P/P, S/I, and T/E were previously defined, and A = "absent" [see manual for further definitions of these terms].

A	<input checked="" type="checkbox"/> Vegetated Component >5 acres						<input type="checkbox"/> Vegetated Component 1-5 acres						<input type="checkbox"/> Vegetated Component <1 acre					
B	<input type="checkbox"/> High		<input checked="" type="checkbox"/> Moderate		<input type="checkbox"/> Low		<input type="checkbox"/> High		<input type="checkbox"/> Moderate		<input type="checkbox"/> Low		<input type="checkbox"/> High		<input type="checkbox"/> Moderate		<input type="checkbox"/> Low	
C	Yes	No	Yes	No	Yes	No	Yes	No	Yes	No	Yes	No	Yes	No	Yes	No	Yes	No
P/P	---	---	---	.5M	---	---	---	---	---	---	---	---	---	---	---	---	---	---
S/I	---	---	---	---	---	---	---	---	---	---	---	---	---	---	---	---	---	---
T/E/A	---	---	---	---	---	---	---	---	---	---	---	---	---	---	---	---	---	---

Wetland/Site #(s): all wetlands outside Rock Creek corridor**14I. PRODUCTION EXPORT / FOOD CHAIN SUPPORT** (continued)iii. **Modified Rating:** Note: Modified score cannot exceed 1.0 or be less than 0.1.**Vegetated Upland Buffer:** Area with $\geq 30\%$ plant cover, $\leq 15\%$ noxious weed or ANVS cover, AND that is not subjected to periodic mechanical mowing or clearing (unless for weed control).Is there an average ≥ 50 -foot wide vegetated upland buffer around $\geq 75\%$ of the AA's perimeter? ☒ **YES**, add 0.1 to score in ii = 0.6 ☐ **NO**iv. **Final Score and Rating:** .6M **Comments:** _____**14J. GROUNDWATER DISCHARGE / RECHARGE**

Check the appropriate indicators in i and ii below.

i. Discharge Indicators

- ☐ The AA is a slope wetland.
☒ Springs or seeps are known or observed.
☒ Vegetation growing during dormant season/drought.
☐ Wetland occurs at the toe of a natural slope.
☒ Seeps are present at the wetland edge.
☐ AA permanently flooded during drought periods.
☐ Wetland contains an outlet, but no inlet.
☐ Shallow water table and the site is saturated to the surface.
☐ Other: _____

ii. Recharge Indicators

- ☐ Permeable substrate present without underlying impeding layer.
☐ Wetland contains inlet but no outlet.
☐ Stream is a known 'losing' stream. Discharge volume decreases.
☐ Other: _____

iii. **Rating:** Use the information from i and ii above and the table below to select the functional point and rating.

Criteria	Duration of Saturation at AA Wetlands FROM GROUNDWATER DISCHARGE or WITH WATER THAT IS RECHARGING THE GROUNDWATER SYSTEM			
	<input checked="" type="checkbox"/> P/P	<input type="checkbox"/> S/I	<input type="checkbox"/> T	<input type="checkbox"/> None
<input checked="" type="checkbox"/> Groundwater Discharge or Recharge	1H	---	---	---
<input type="checkbox"/> Insufficient Data/Information	---			

Comments: _____**14K. UNIQUENESS**i. **Rating:** Working from top to bottom, use the matrix below to select the functional point and rating.

Replacement Potential	AA contains fen, bog, warm springs or mature (>80 yr-old) forested wetland OR plant association listed as "S1" by the MTNHP			AA does not contain previously cited rare types AND structural diversity (#13) is high OR contains plant association listed as "S2" by the MTNHP			AA does not contain previously cited rare types OR associations AND structural diversity (#13) is low-moderate		
Estimated Relative Abundance (#11)	<input type="checkbox"/> Rare	<input checked="" type="checkbox"/> Common	<input type="checkbox"/> Abundant	<input type="checkbox"/> Rare	<input type="checkbox"/> Common	<input type="checkbox"/> Abundant	<input type="checkbox"/> Rare	<input type="checkbox"/> Common	<input type="checkbox"/> Abundant
<input checked="" type="checkbox"/> Low Disturbance at AA (#12i)	---	.9H	---	---	---	---	---	---	---
<input type="checkbox"/> Moderate Disturbance at AA (#12i)	---	---	---	---	---	---	---	---	---
<input type="checkbox"/> High Disturbance at AA (#12i)	---	---	---	---	---	---	---	---	---

Comments: Fen present.**14L. RECREATION / EDUCATION POTENTIAL**☐ NA (proceed to Overall Summary and Rating page)

Affords 'bonus' points if AA provides a recreational or educational opportunity.

i. **Is the AA a known or potential recreational or educational site?** ☒ **YES**, go to ii. ☐ **NO**, check the NA box.ii. **Check categories that apply to the AA:** ☐ Educational/Scientific Study ☒ Consumptive Recreational ☒ Non-consumptive recreational
☐ Other: _____iii. **Rating:** Use the matrix below to select the functional point and rating.

Known or Potential Recreational or Educational Area	Known	Potential
Public ownership or public easement with general public access (no permission required)	---	---
Private ownership with general public access (no permission required)	---	---
Private or public ownership without general public access, or requiring permission for public access	---	.05L

Comments: _____**15. GENERAL SITE NOTES:** _____

Wetland/Site #(s): all wetlands outside Rock Creek corridor

Function & Value Variables	Rating – Actual Functional Points	Possible Functional Points	Functional Units: Actual Points x Estimated AA Acreage	Indicate the Four Most Prominent Functions with an Asterisk
A. Listed / Proposed T&E Species Habitat	low 0.10	1.00	3.98	
B. MT Natural Heritage Program Species Habitat	low 0.10	1.00	3.98	
C. General Wildlife Habitat	mod 0.70	1.00	27.87	
D. General Fish Habitat	NA	NA		
E. Flood Attenuation	NA	NA		
F. Short and Long Term Surface Water Storage	high 1.00	1.00	39.81	
G. Sediment / Nutrient / Toxicant Removal	high 1.00	1.00	39.81	
H. Sediment / Shoreline Stabilization	NA	NA		
I. Production Export / Food Chain Support	mod 0.60	1.00	23.89	
J. Groundwater Discharge / Recharge	high 1.00	1.00	39.81	
K. Uniqueness	high 0.90	1.00	35.83	
L. Recreation / Education Potential (bonus point)	low 0.05		1.99	
Total Points	5.45	8	217 Total Functional Units	
Percent of Possible Score 68% (round to nearest whole number)				

Category I Wetland: (must satisfy **one** of the following criteria; otherwise go to Category II)

- ☐ Score of 1 functional point for Listed/Proposed Threatened or Endangered Species; **or**
☐ Score of 1 functional point for Uniqueness; **or**
☐ Score of 1 functional point for Flood Attenuation **and** answer to Question 14E.ii is "yes"; **or**
☐ Percent of possible score > 80% (round to nearest whole #).

Category II Wetland: (Criteria for Category I not satisfied **and** meets any **one** of the following criteria; otherwise go to Category IV)

- ☐ Score of 1 functional point for MT Natural Heritage Program Species Habitat; **or**
☐ Score of .9 or 1 functional point for General Wildlife Habitat; **or**
☐ Score of .9 or 1 functional point for General Fish Habitat; **or**
☐ "High" to "Exceptional" ratings for **both** General Wildlife Habitat **and** General Fish/Aquatic Habitat; **or**
☒ Score of .9 functional point for Uniqueness; **or**
☒ Percent of possible score > 65% (round to nearest whole #).

☐ **Category III Wetland:** (Criteria for Categories I, II, or IV not satisfied)**Category IV Wetland:** (Criteria for Categories I or II are not satisfied and all of the following criteria are met; if not go to Category III)

- ☐ "Low" rating for Uniqueness; **and**
☐ Vegetated wetland component < 1 acre (do not include upland vegetated buffer); **and**
☐ Percent of possible score < 35% (round to nearest whole #).

OVERALL ANALYSIS AREA (AA) RATING: Check the appropriate category based on the criteria outlined above.
☐ I ☒ II ☐ III ☐ IV

Appendix C

2008 REPRESENTATIVE PHOTOGRAPHS

*MDT Wetland Mitigation Monitoring
Big Hole Grazing Association
Beaverhead County, Montana*

2008 BIG HOLE GRAZING ASSOCIATION WETLAND MITIGATION SITE



Photo 1: PP1 – View facing north



Photo 2: PP1 – View facing west



Photo 3: PP1 – View facing east



Photo 4: PP2 – View facing northwest



Photo 5: PP2 – View facing west



Photo 6: PP2 – View facing east

2008 BIG HOLE GRAZING ASSOCIATION WETLAND MITIGATION SITE



Photo 7: PP3 – View facing southeast



Photo 8: PP3 – View facing west



Photo 9: PP3 – View facing northwest



Photo 10: PP4 – View facing southeast.



Photo 11: PP4 – View facing southeast



Photo 12: PP4 – View facing southwest.

2008 BIG HOLE GRAZING ASSOCIATION WETLAND MITIGATION SITE



Photo 13: PP5 - View facing east



Photo 14: PP5 - View facing southwest



Photo 15: PP5 - View facing northwest



Photo 16: PP6 - View facing southeast



Photo 17: PP6 - View facing south



Photo 18: PP6 - View facing northwest

2008 BIG HOLE GRAZING ASSOCIATION WETLAND MITIGATION SITE



Photo 19: PP7 - View facing southwest



Photo 20: PP7 - View facing west



Photo 21: PP7 - View facing south



Photo 22: Transect Start

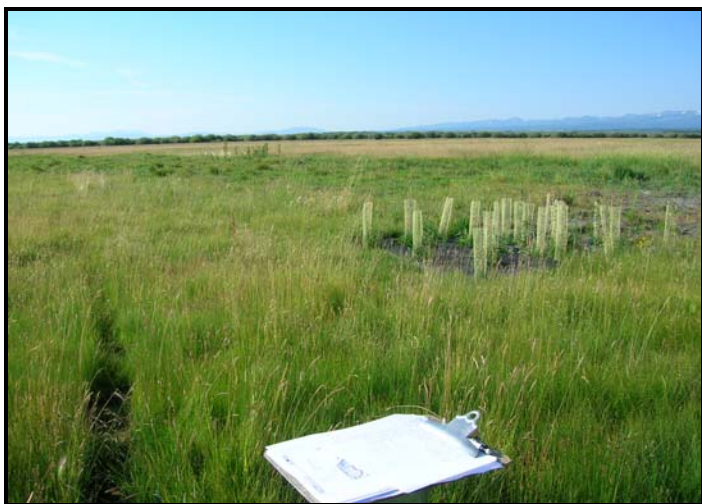


Photo 23: Transect End



Photo 24: Woody Plantings

Appendix D

PROJECT PLAN SHEET

*MDT Wetland Mitigation Monitoring
Big Hole Grazing Association
Beaverhead County, Montana*

DETAIL SITE PLAN



CP 1

TO ROCK
CREEK ROAD

EX. ACCESS ROAD

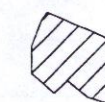
DITCH 5

DITCH 6

DITCH 1

ALLOWED
TEMPORARY FENCE
BREAK

EXISTING
HEADGATE



- DELINEATED WETLANDS
DO NOT DISTURB



- DO NOT DISTURB



- MONITORING WELL

NEW ACCESS ROAD
SEE DETAIL

PLUG DITCHES 3 & 4
AT CONFLUENCE

EXISTING CROSSING

ROCK CREEK

EASEMENT BOUNDARY

CONTOUR INTERVAL = 0.2m

T. 4 S.

R. 16 W.

SEC. 2

NO SCALE

DITCH 2
(BREACH BERM
IN 3 PLACES)

LENGTH OF DITCH TO BE FILLED

DITCH #1 = 520m±
DITCH #3 = 3m±
DITCH #4 = 3m±
DITCH #5 = 172m±
DITCH #6 = 82m±

Appendix E

BIRD SURVEY PROTOCOL GPS PROTOCOL

*MDT Wetland Mitigation Monitoring
Big Hole Grazing Association
Beaverhead County, Montana*

BIRD SURVEY PROTOCOL

This protocol was developed by the Montana Department of Transportation (MDT) to monitor bird use within their Wetland Mitigation Sites. Though each wetland mitigation site is vastly different, the bird survey data collection methods were standardized to order to increase repeatability. The protocol uses an "area search within a restricted time frame" to collect data on bird species, density, behavior, and habitat-type use.

Survey Area

Sites that can be entirely walked: Sites where the entire perimeter or area can be walked include, but are not limited to: small ponds, enhanced historic river channels, and wet meadows. If the wetland is not uncomfortably inundated, walk several meandering transects to sufficiently cover the wetland. Meandering transects can be used, even if a small portion of the area is inaccessible (e.g. cannot cross due to inundation). Use binoculars to identify the bird species, to count the number of individuals, and to identify their behavior and habitat type. Data can be recorded directly onto the bird survey form or into a field notebook. The number of meandering transects and their direction (or location) should be recorded in the field notebook and/or drawn onto the aerial photograph or topographic map. Meandering transects are not formal and should not be staked. Each site should be walked and surveyed to the fullest extent within the set time limit.

Sites than cannot be entirely walked: Sites where the entire perimeter or area cannot be walked include, but are not limited to: very large sites (i.e. perimeter of 2-3 miles), and large-bodied waters (i.e. reservoirs), where deep water habitat (> 6 feet) is close to shore. For large-bodied waters where only one area was graded to create or enhance the development of wetland, bird surveys should be walked along meandering transects within or around the graded area (see above.). For sites that cannot be walked, bird surveys should be conducted from many lookout posts, established at key vantage points. The general location of lookout posts should be recorded in the field notebook or drawn onto the aerial photograph or topographic map. Lookout post locations do not need to be staked. Both binoculars and spotting scopes may be used in order to accurately identify and count the birds. Depending upon the size of the open water, more time may be spent viewing the mitigation area from lookout posts than is spent traveling between posts.

Survey Time

Ideally, bird surveys should be conducted in the morning hours when bird activity is often greatest (i.e. sunrise to no later than 11:00 am). Surveys can be completed before 11am if all transects have been walked or all lookout posts have been viewed with no new bird activity observed. For some sites bird surveys may need to be performed in the late afternoon or evening due to traveling constraints or weather. The overall limiting time factor will be the number of budgeted hours for the project.

Data Recording

Bird Species List: Record each bird species observed onto the Bird Survey-Field Data Sheet (or field notebook). Record the bird's common name using the appropriate 4-letter code. The 4-letter code uses the first two letters of the first two word's of the bird's common name or if one name, the first four letters. For example, Mourning Dove is coded as MODO while Mallard is coded as MALL. If an unknown individual is observed, use the 4-letter protocol, but define your

BIRD SURVEY PROTOCOL (continued)

abbreviation at the bottom of the field data sheet. For example, unknown shorebird is UNSB; unknown brown bird is UNBR; unknown warbler is UNWA; and unknown waterfowl is UNWF. For a flyover of a flock of unknown species, use a term that describes the birds' general characteristics and include the approximate flock size in parenthesis; do not fill in the habitat column. For example, a flock of black, medium-sized birds could be coded as UNBB / FO (25).

Bird Density: For each observation record the actual or estimated number of individuals observed per species and per behavior. Totals can be tallied in the office and entered onto the Bird Survey-Field Data Sheet.

Bird Behavior: Bird behavior must be identified by what is known. When a species is observed, the behavior that is immediately exhibited is recorded. Only behaviors that have discreet descriptive terms should be used. The following terms are recommended: breeding pair (BP); foraging (F); flyover (FO); loafing (L), which is defined as sleeping, roosting, or floating with head tucked under wing; and nesting (N). If other behaviors that have a specific descriptive word are observed then it can be used and should later be added to the protocol. Descriptive words or phrases such as "migrating" or "living on site" are unknown behaviors.

Bird Species Habitat Use: When a species is observed, the habitat is also recorded. The following broad habitat categories are used:

- ◆ aquatic bed (AB), defined as rooted-floating, floating-leaved, or submergent vegetation.
- ◆ marsh (MA), defined as emergent (e.g. cattail, bulrush) vegetation with surface water.
- ◆ wet meadow (WM), defined as grasses, sedges, or rushes with little to no surface water.
- ◆ scrub-shrub (SS), defined as shrub covered wetland.
- ◆ forested (FO), defined as tree covered wetland.
- ◆ open water (OW), defined as unvegetated surface water.
- ◆ upland (UP), defined as the upland buffer.

Other categories can be used and defined on the data sheet and should later be added to the protocol.

Other Fields

Bird Visit: Each bird survey (i.e. spring, fall, and mid-season) should be completed on separate Bird Survey-Field Data Sheets.

Time: Record the start time and end time on the Bird Survey-Field Data Sheet.

Date: Record the date of the bird survey.

Weather: Record the weather conditions (i.e. temperature, wind, condition).

Notes: Note if a particular individual bird is using a constructed nest box and note the condition of constructed nest box(es). Also record any comments about the site, wildlife, wetland conditions, etc.

GPS MAPPING AND AERIAL PHOTO REFERENCING PROCEDURE

From 2001 through 2006, PBS&J mapped the vegetation community boundaries, photograph points, and other sampling locations in the field using the resource-grade Trimble GEO III GPS (Global Positioning System) unit. The data were collected with a minimum of three positions per feature using Course/Acquisition code. The collected data were then transferred to a personal computer (PC) and differentially corrected to the nearest operating Community Base Station. The corrected data were then exported to ACAD drawings in Montana State Plane Coordinates NAD 83 international feet. The Trimble GEO III GPS unit was also used for some sites in 2007.

The collected and processed Trimble Geo III GPS positions had a 68% accuracy of 7 feet except in isolated areas where accuracy fell to 12 feet. This is within the 1 to 5 meter range listed as the expected accuracy of the mapping grade Trimble GPS.

In 2007 and 2008 sites were mapped using the resource-grade Magellan MobileMapper Office GPS unit. The Magellan GPS unit has a comparable accuracy level to the Trimble Geo III unit.

Each year, MDT photographs each mitigation site from the air. These aerial photographs are not geo-referenced, but serve as a visual aid to map wetland development and vegetation communities, and to show approximate locations for various monitoring activities (i.e. photograph points, transects, or macroinvertebrate sampling). Reference points that are observable on the aerial photo (i.e. road, stream channel, or fence) were also marked with the GPS unit in order to better position the aerial photograph. This positioning did not remove any of the distortion inherent to all photos. All mapped features and community boundaries were reviewed by the wetland biologist, to increase the figure's accuracy.

Any relationship of features located to easement or property lines are not to be construed from these figures. These relationships can only be determined with a survey by a licensed surveyor.