

Appendix A:
Figures

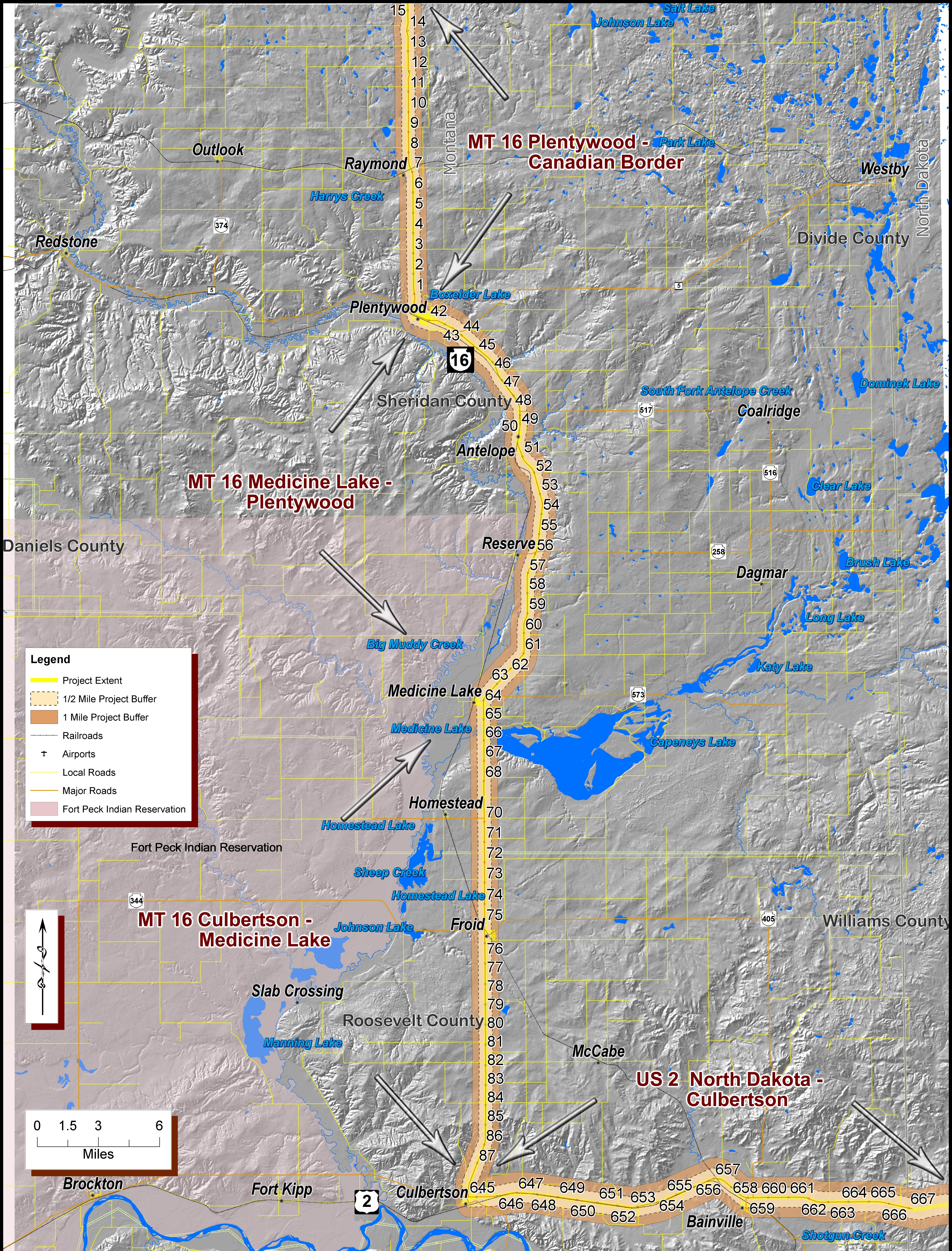


Figure 1:
Overview / Environmental Scan
Transportation Regional Economic Development Study
Theodore Roosevelt Expressway



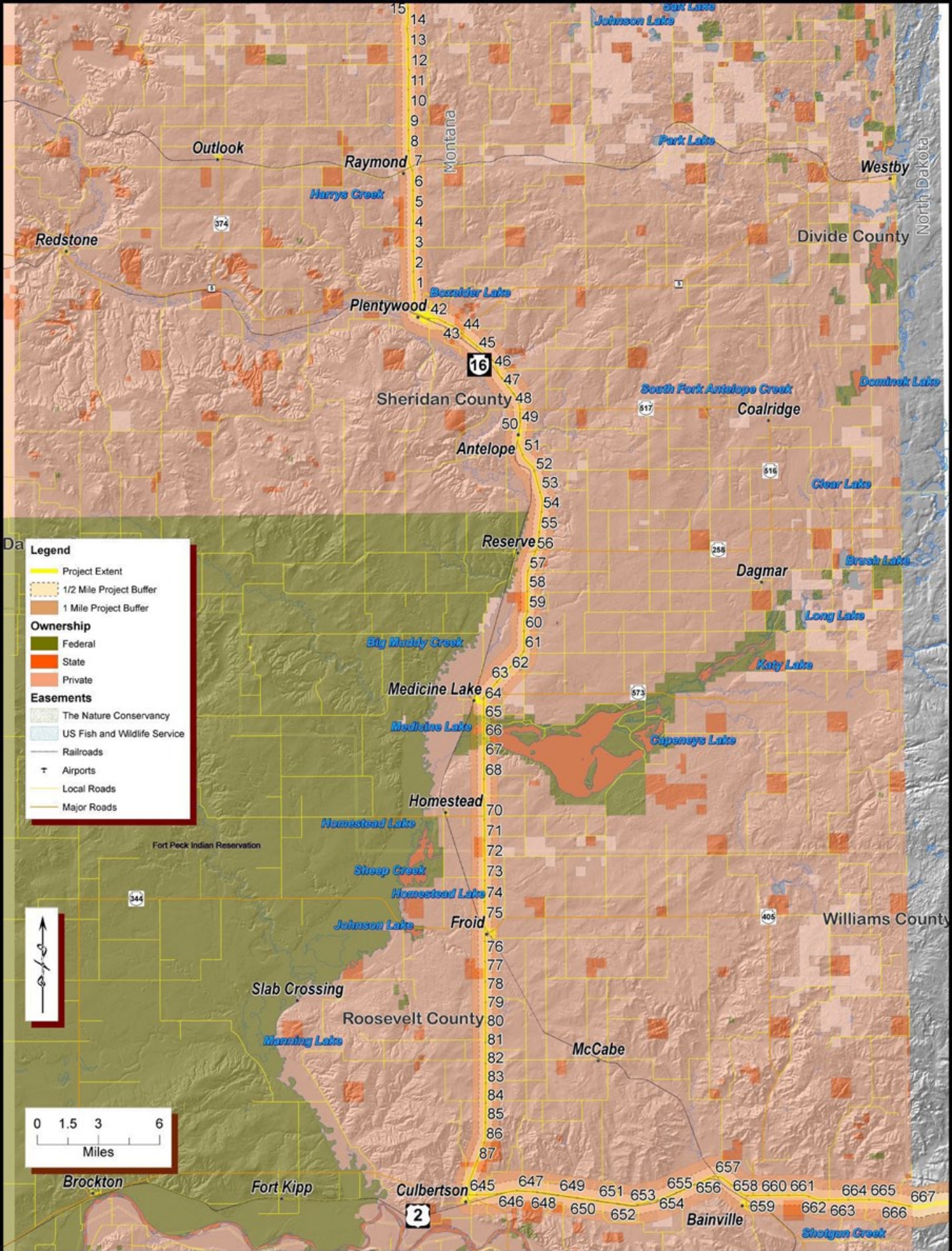


Figure 2:
Ownership / Environmental Scan
Transportation Regional Economic Development Study
Theodore Roosevelt Expressway



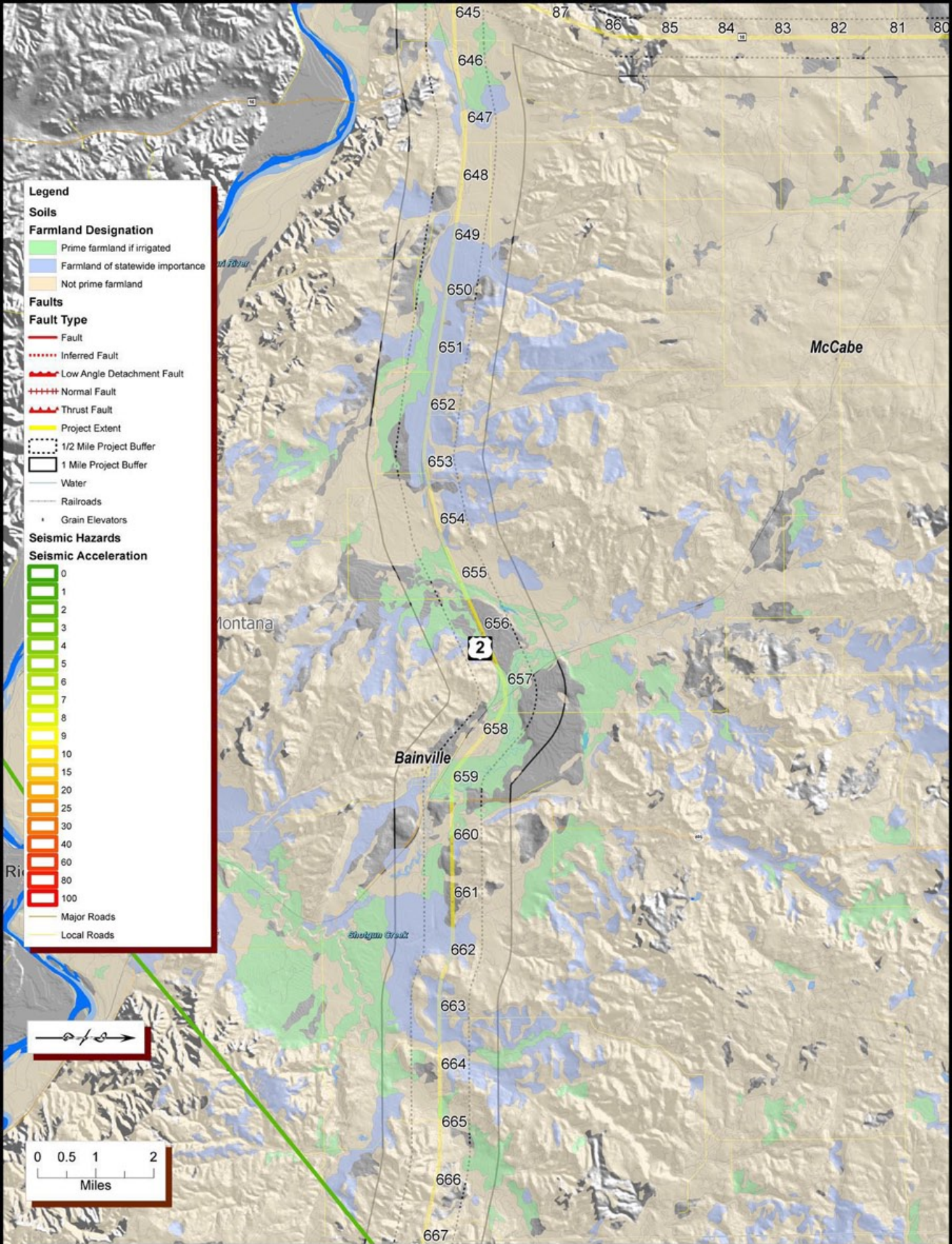


Figure 3:
Prime Farmland & Geology / North Dakota to Culbertson
Transportation Regional Economic Development Study
Theodore Roosevelt Expressway

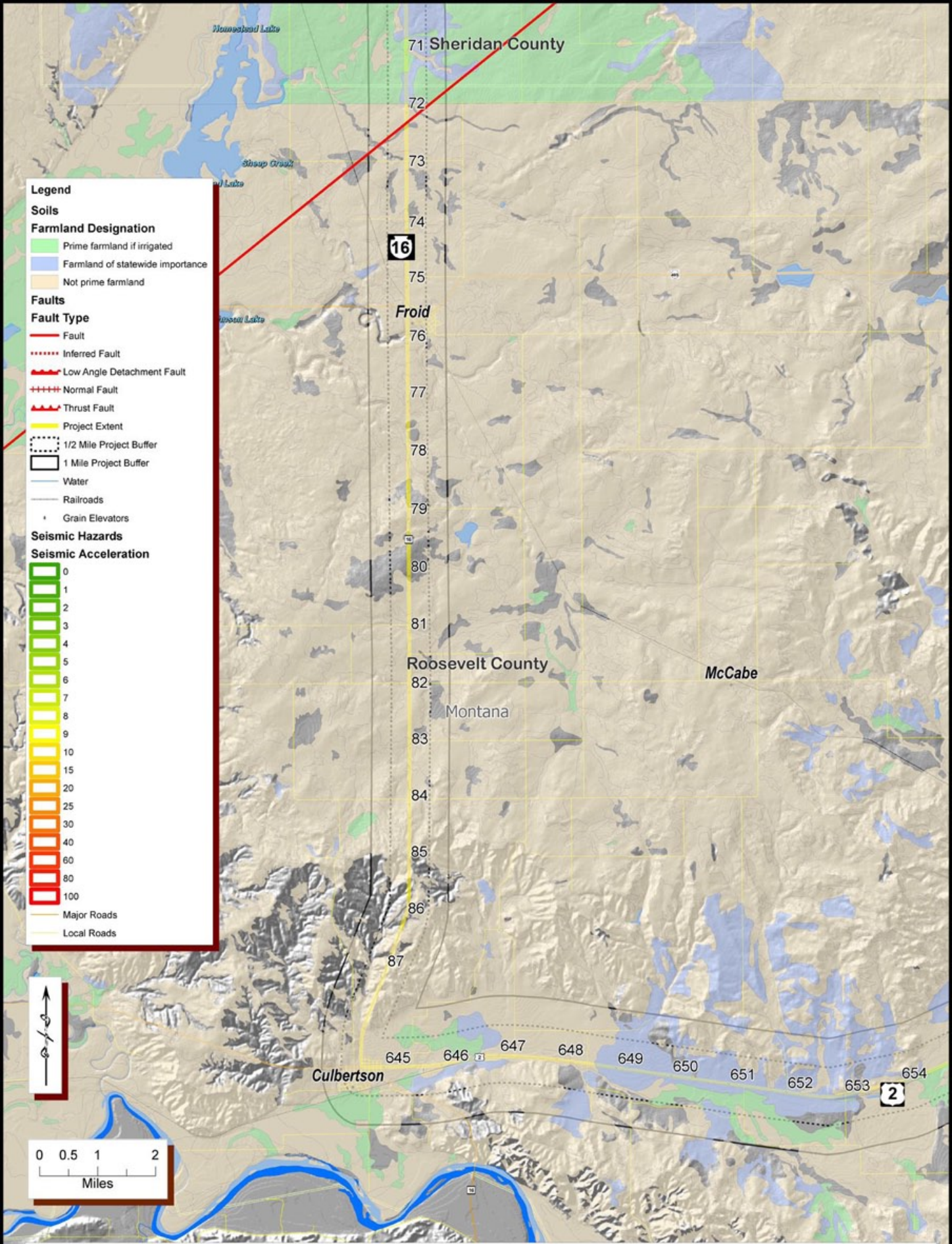


Figure 4:
Prime Farmland & Geology / Culbertson to MP 71
Transportation Regional Economic Development Study
Theodore Roosevelt Expressway



Legend

Soils

Farmland Designation

- Prime farmland if irrigated
- Farmland of statewide importance
- Not prime farmland

Faults

Fault Type

- Fault
- Inferred Fault
- Low Angle Detachment Fault
- Normal Fault
- Thrust Fault
- Project Extent
- 1/2 Mile Project Buffer
- 1 Mile Project Buffer
- Water
- Railroads
- Grain Elevators

Seismic Hazards

Seismic Acceleration

| |
|-----|
| 0 |
| 1 |
| 2 |
| 3 |
| 4 |
| 5 |
| 6 |
| 7 |
| 8 |
| 9 |
| 10 |
| 15 |
| 20 |
| 25 |
| 30 |
| 40 |
| 60 |
| 80 |
| 100 |

Major Roads
Local Roads

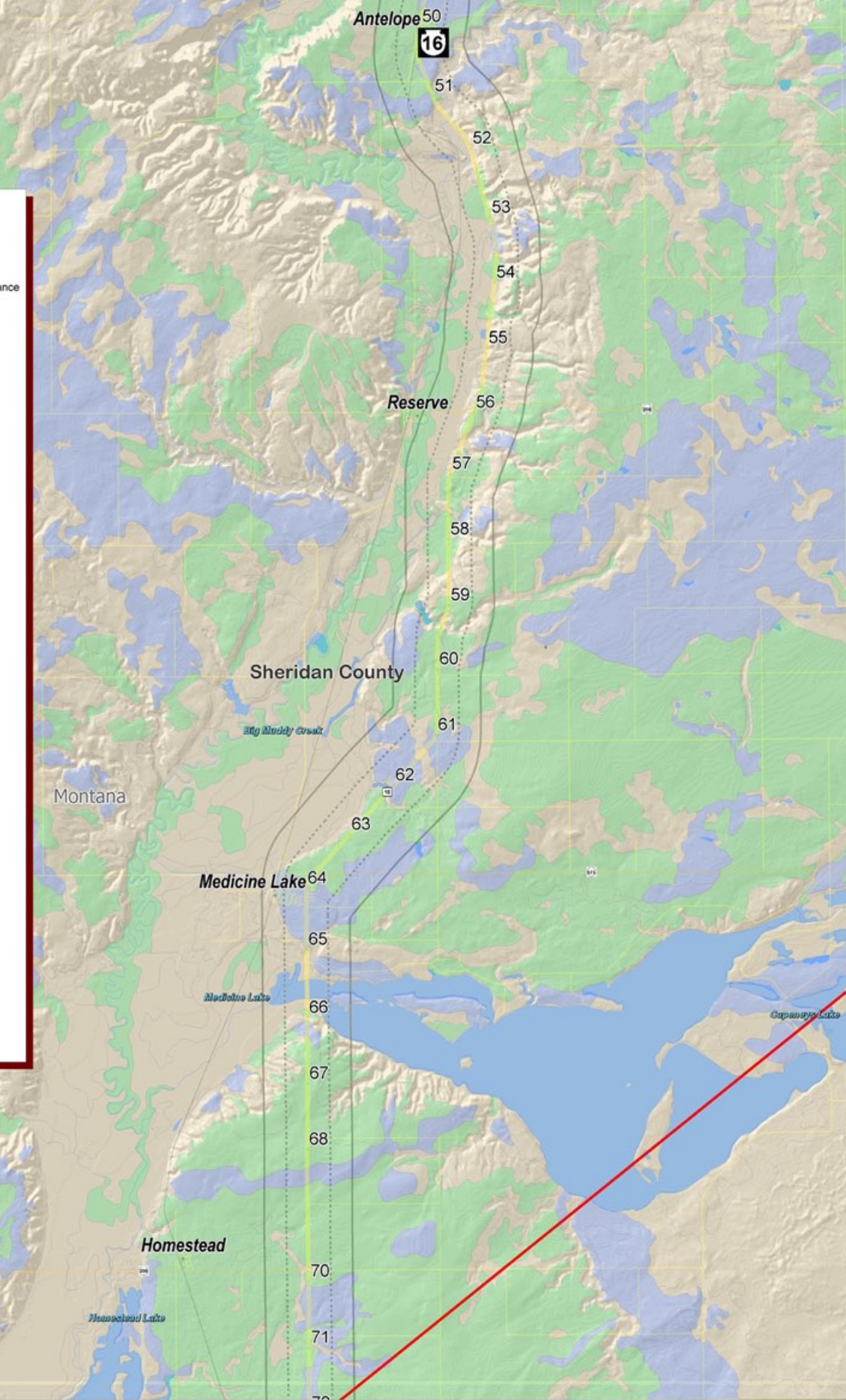


Figure 5:
Prime Farmland & Geology / MP 71 to Antelope
Transportation Regional Economic Development Study
Theodore Roosevelt Expressway

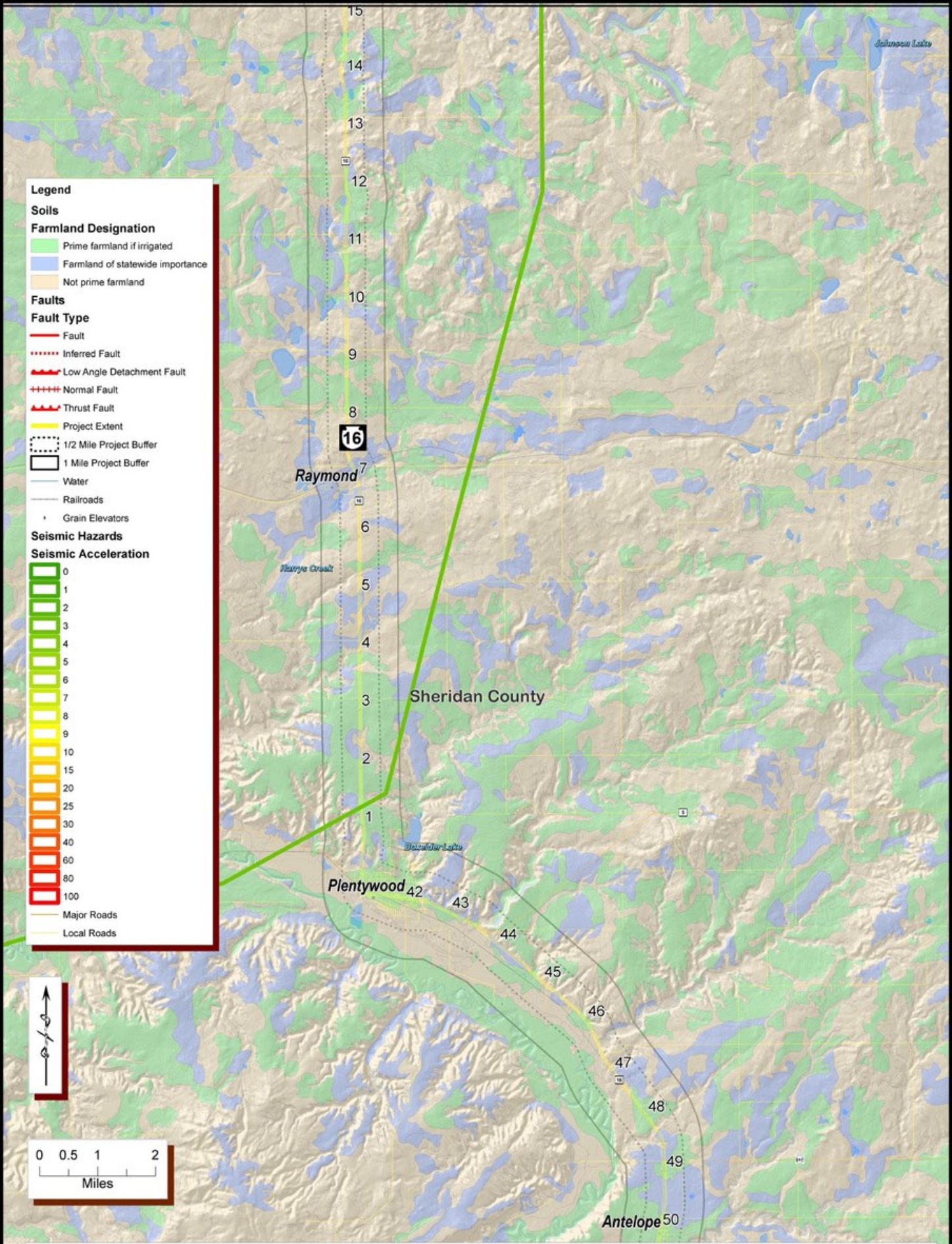
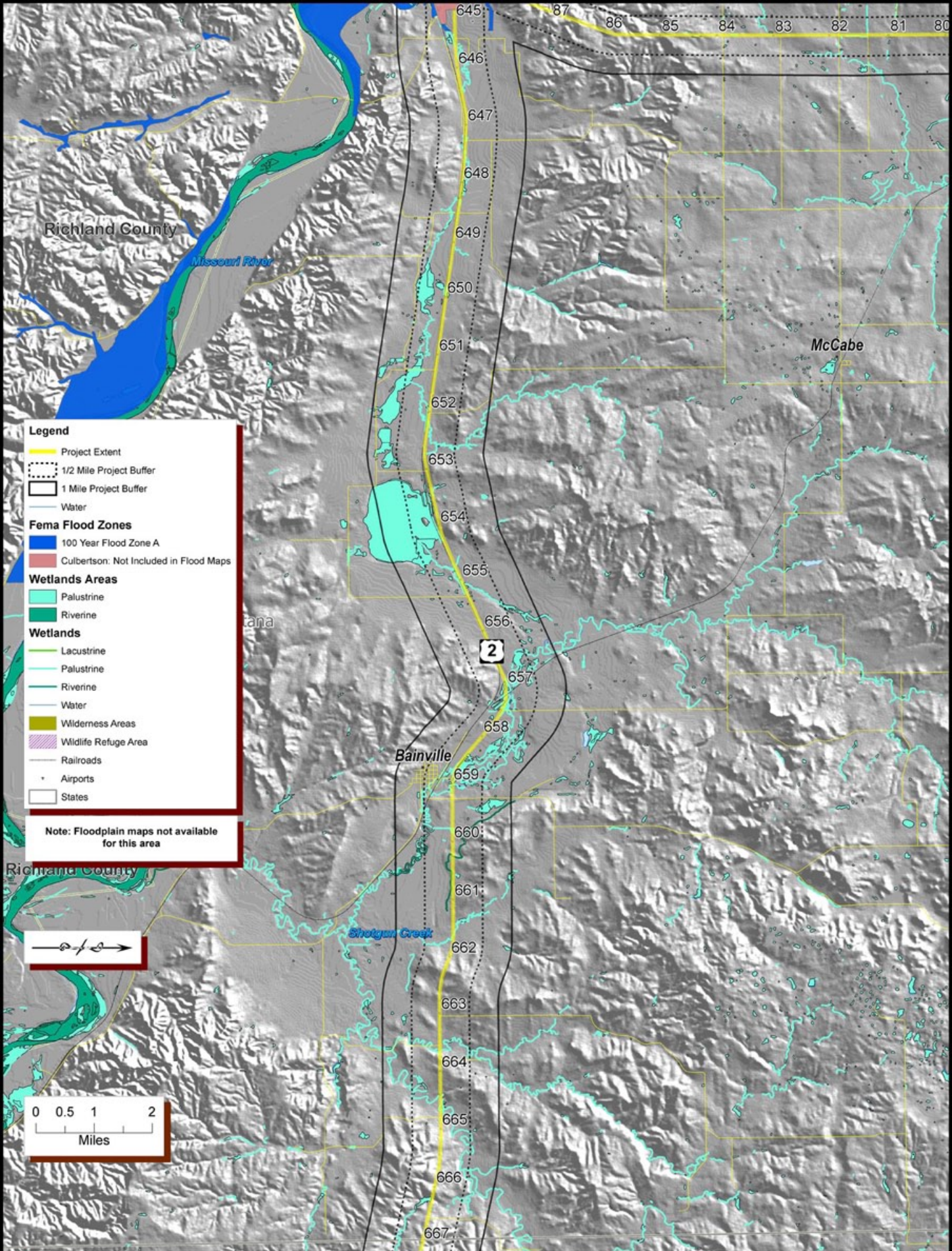


Figure 6 :
Prime Farmland & Geology / Antelope to Canada
Transportation Regional Economic Development Study
Theodore Roosevelt Expressway





Legend

- Project Extent
- 1/2 Mile Project Buffer
- 1 Mile Project Buffer
- Water

Fema Flood Zones

- 100 Year Flood Zone A
- Culbertson: Not Included in Flood Maps

Wetlands Areas

- Palustrine
- Riverine

Wetlands

- Lacustrine
- Palustrine
- Riverine
- Water
- Wilderness Areas
- Wildlife Refuge Area
- Railroads
- ✈ Airports
- States

Note: Floodplain maps not available for this area

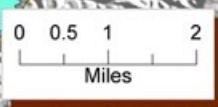
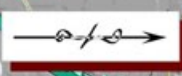


Figure 7:
Surface Water and Wetlands / North Dakota to Culbertson
Transportation Regional Economic Development Study
Theodore Roosevelt Expressway

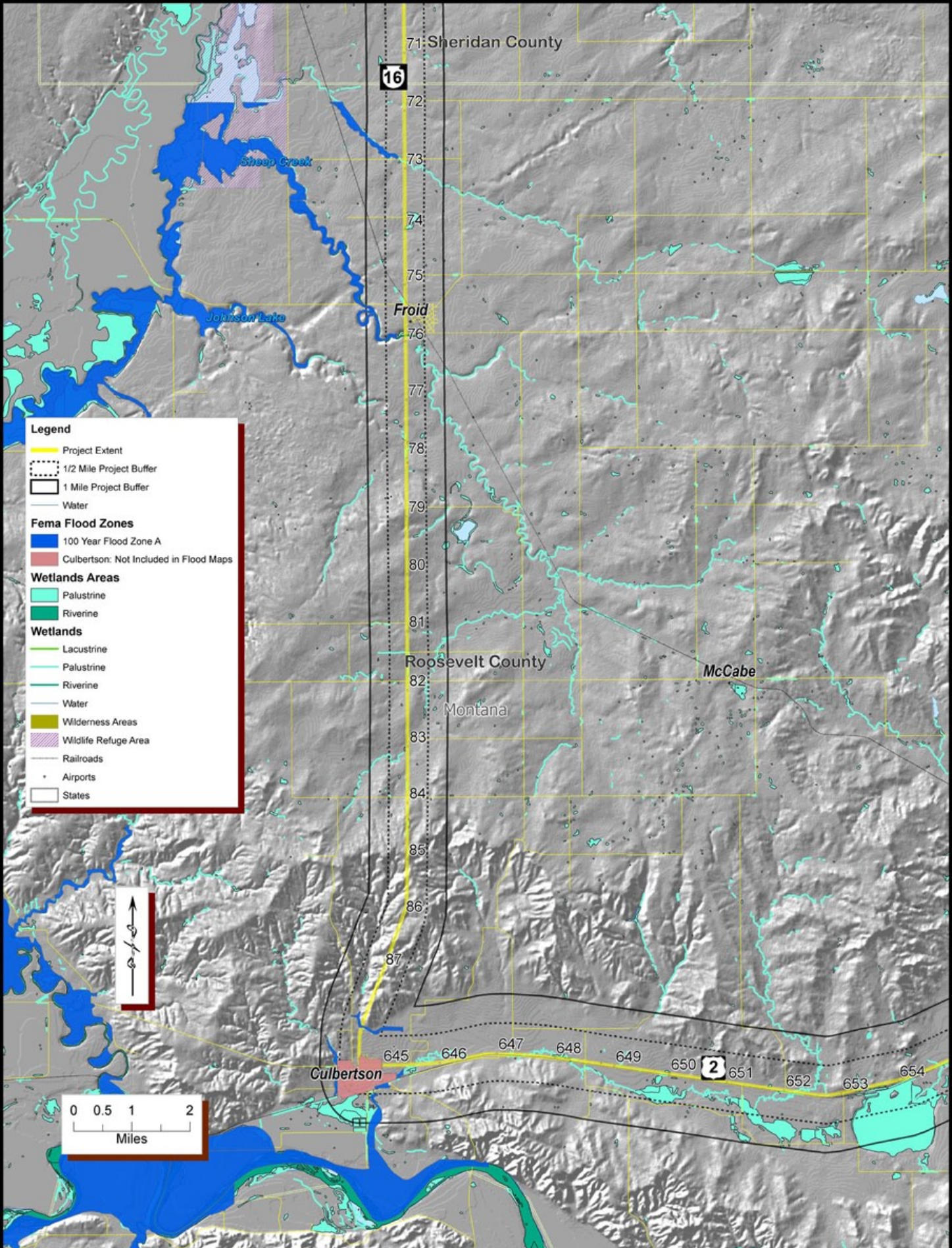


Figure 8:
Surface Water and Wetlands / Culbertson to MP 71
Transportation Regional Economic Development Study
Theodore Roosevelt Expressway

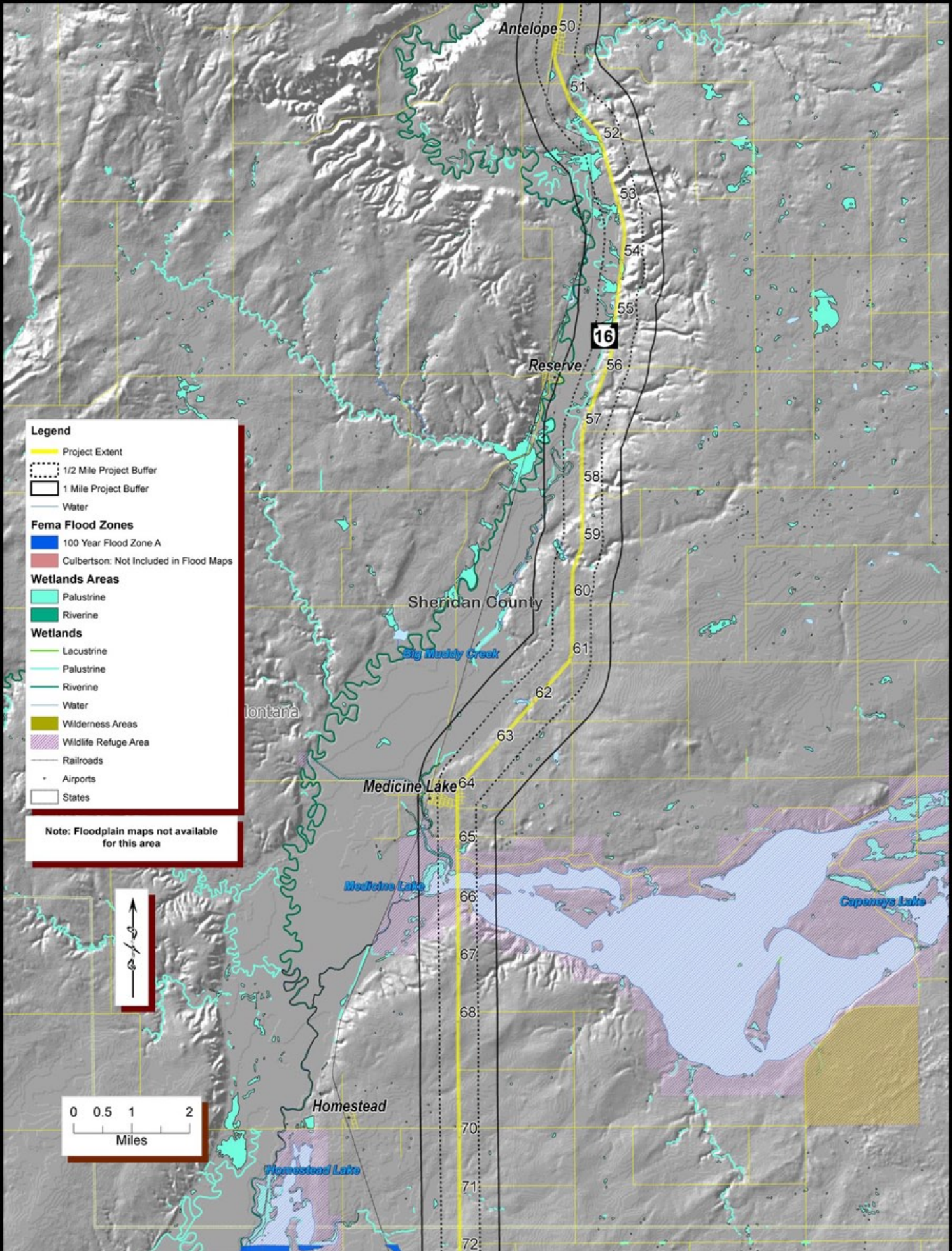


Figure 9:
Surface Water and Wetlands / MP 71 to Antelope
Transportation Regional Economic Development Study
Theodore Roosevelt Expressway

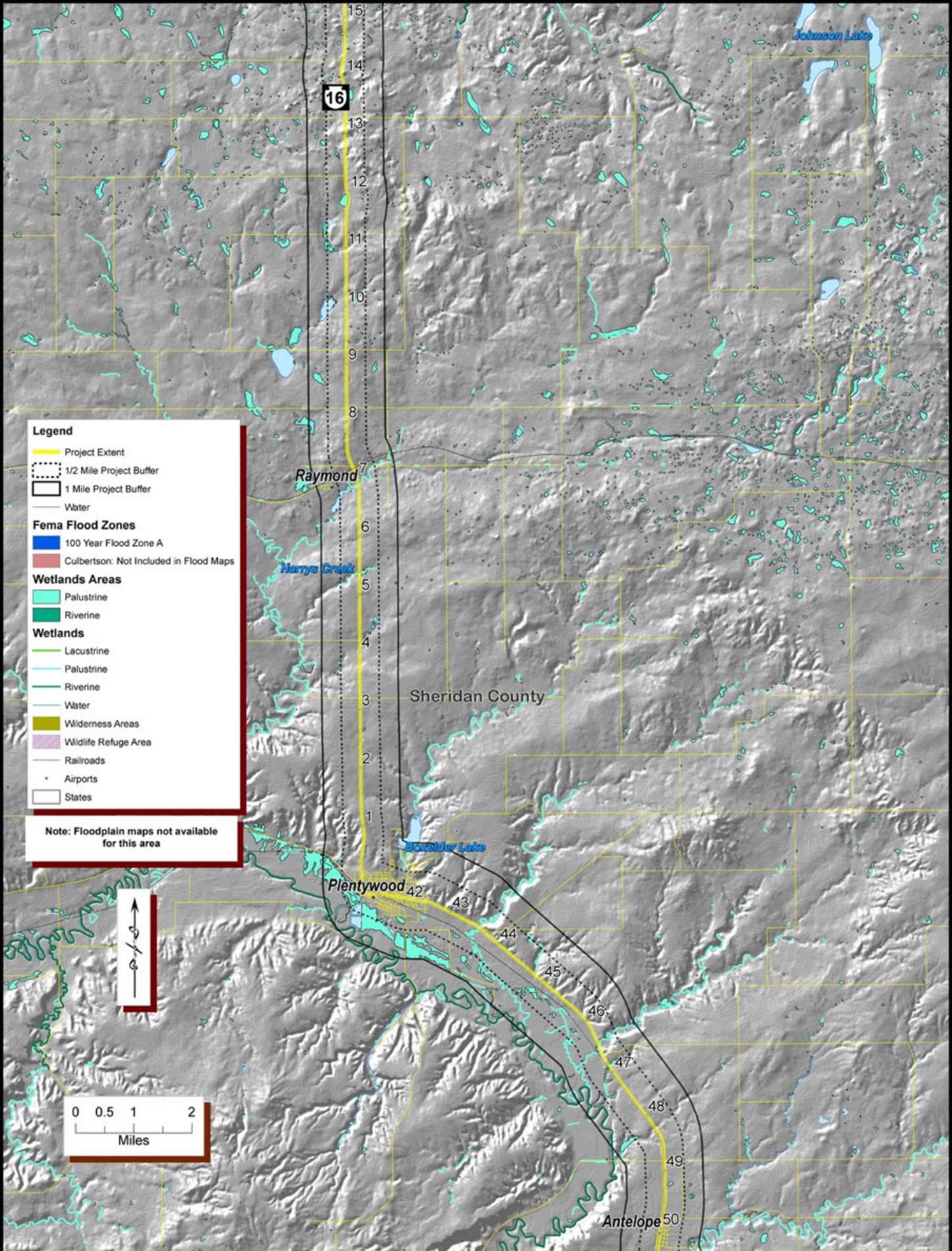


Figure 10:
Surface Water and Wetlands / Antelope to Canada
Transportation Regional Economic Development Study
Theodore Roosevelt Expressway

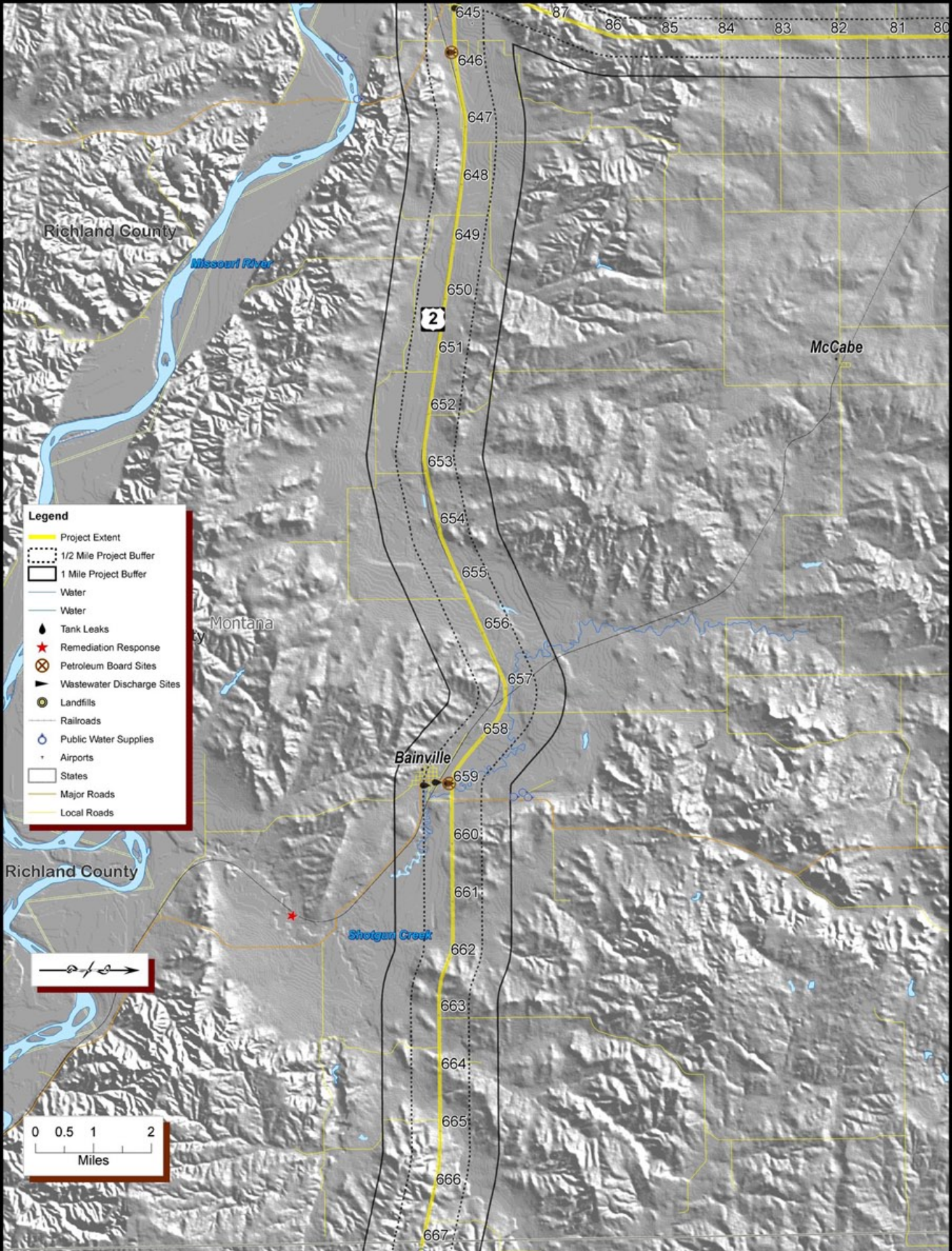


Figure 11:
Hazardous Waste Sites / North Dakota to Culbertson
Transportation Regional Economic Development Study
Theodore Roosevelt Expressway



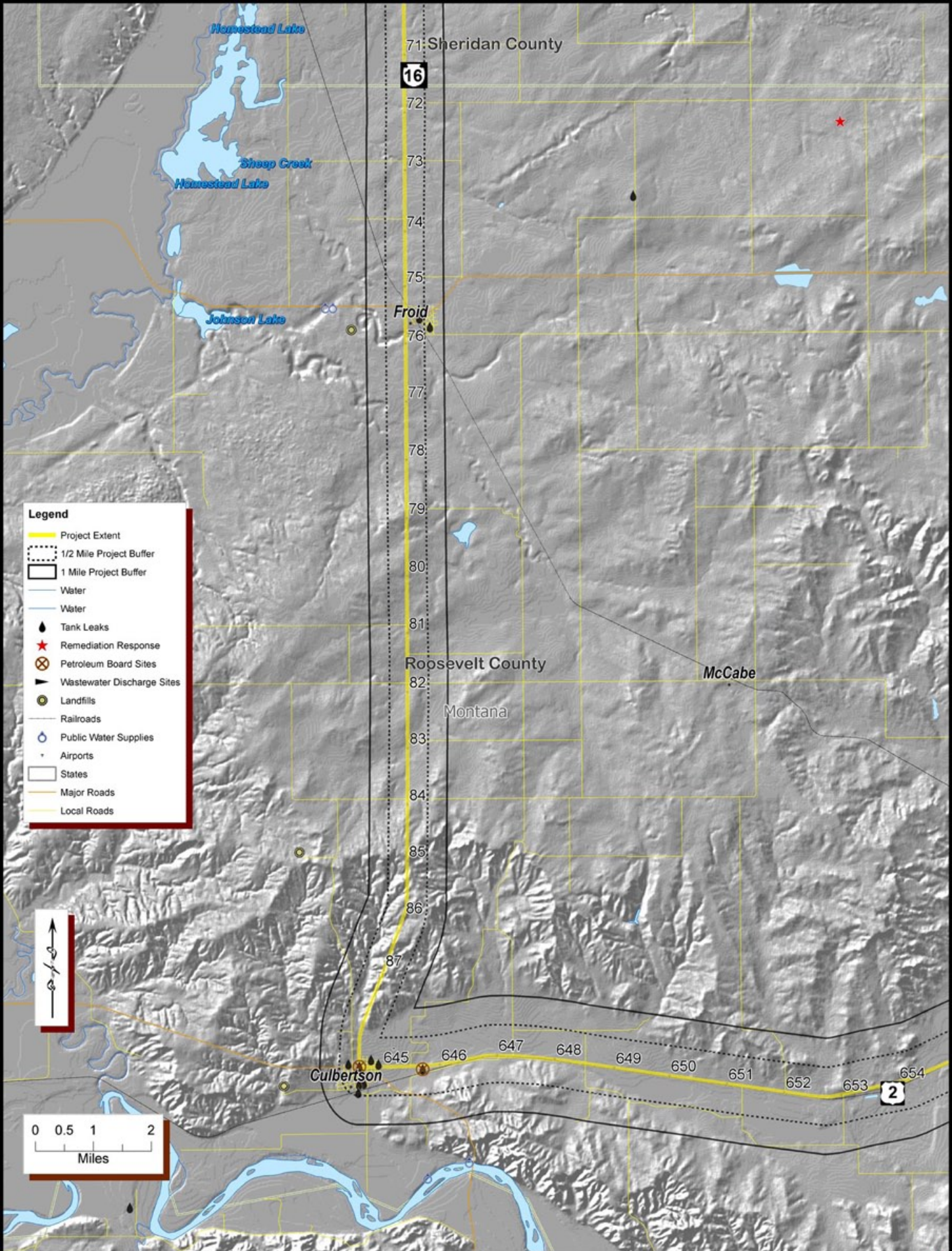


Figure 12:
Hazardous Waste Sites / Culbertson to MP 71
Transportation Regional Economic Development Study
Theodore Roosevelt Expressway

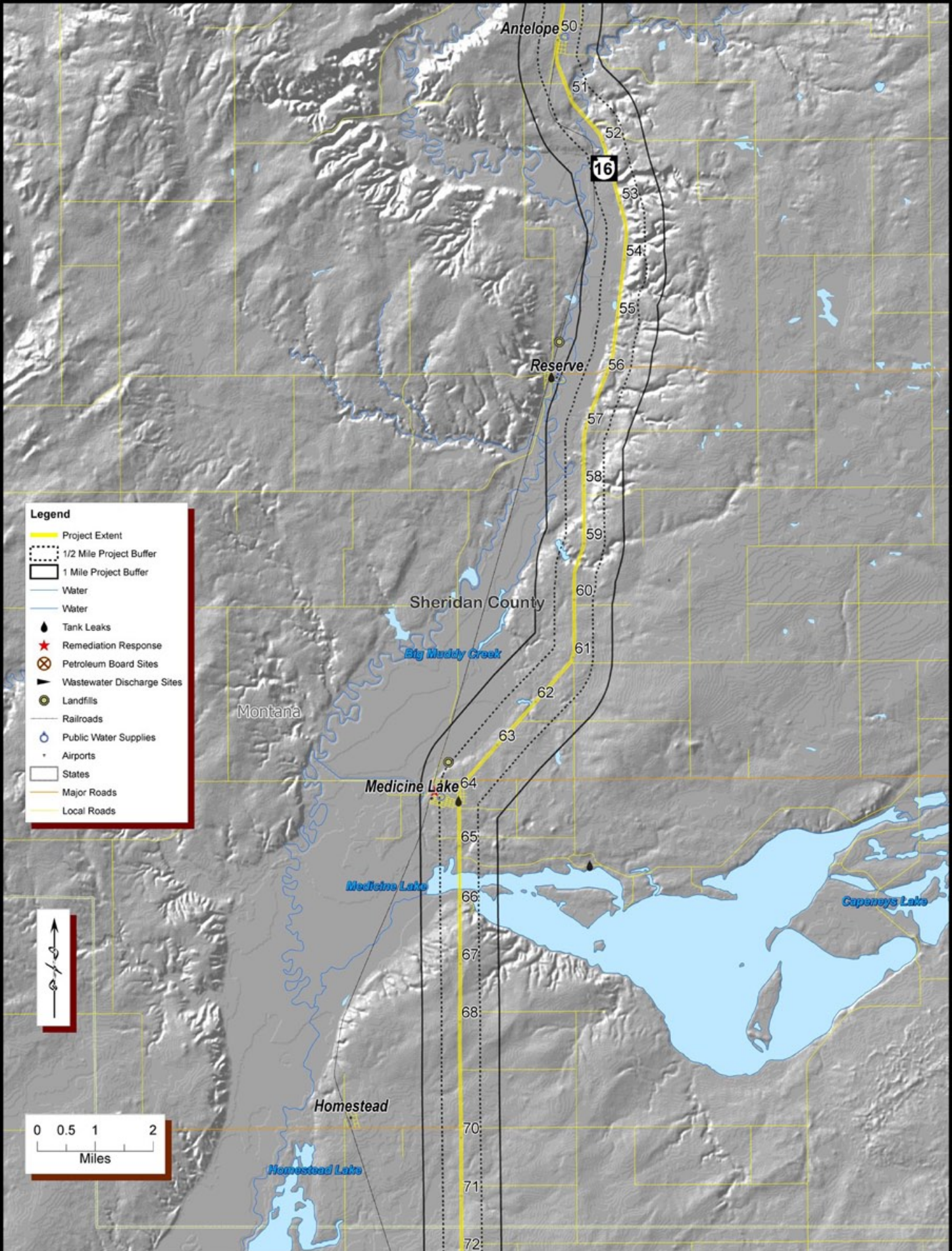


Figure 13:
Hazardous Waste Sites / MP 71 to Antelope
Transportation Regional Economic Development Study
Theodore Roosevelt Expressway

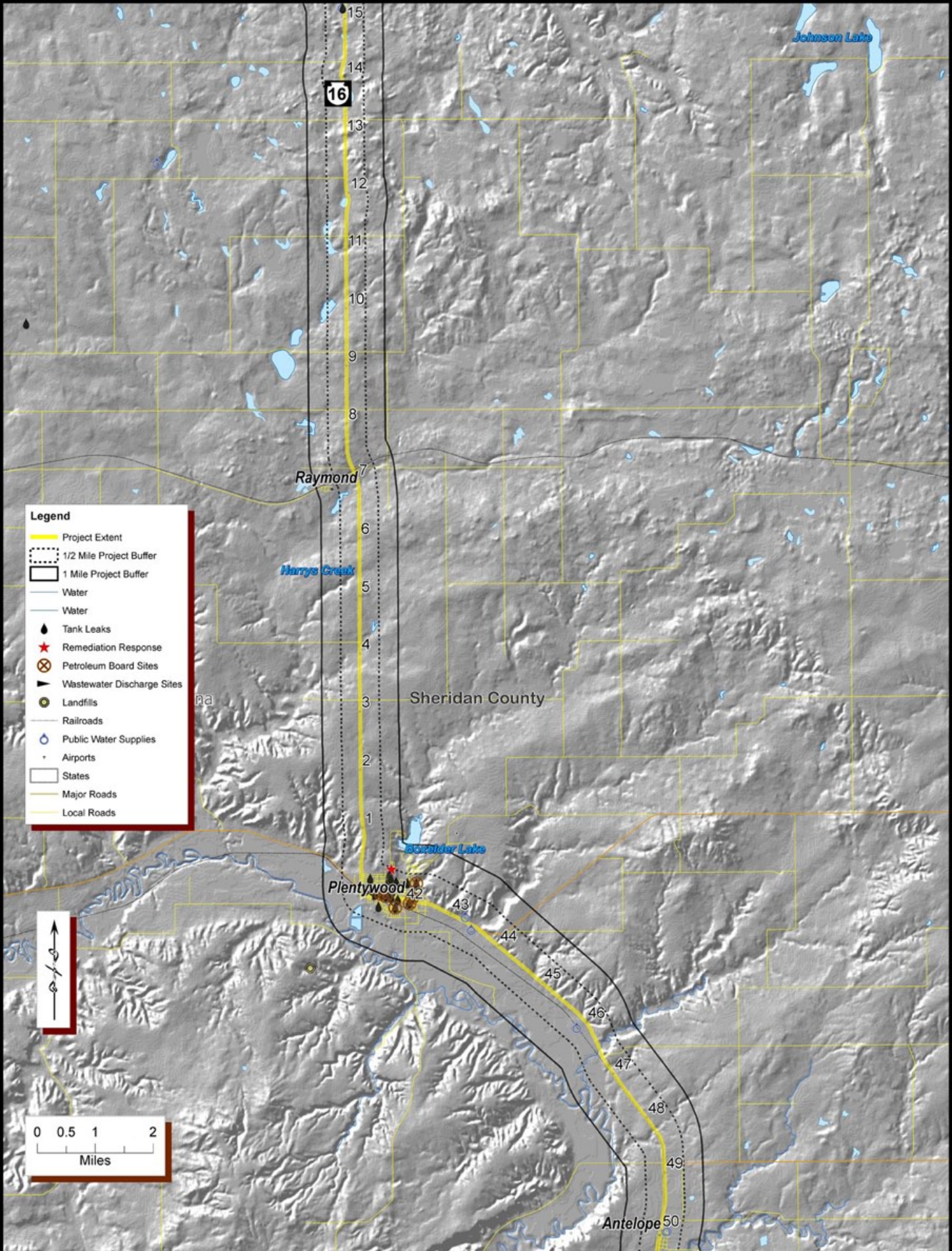


Figure 14:
Hazardous Waste Sites / Antelope to Canada
Transportation Regional Economic Development Study
Theodore Roosevelt Expressway

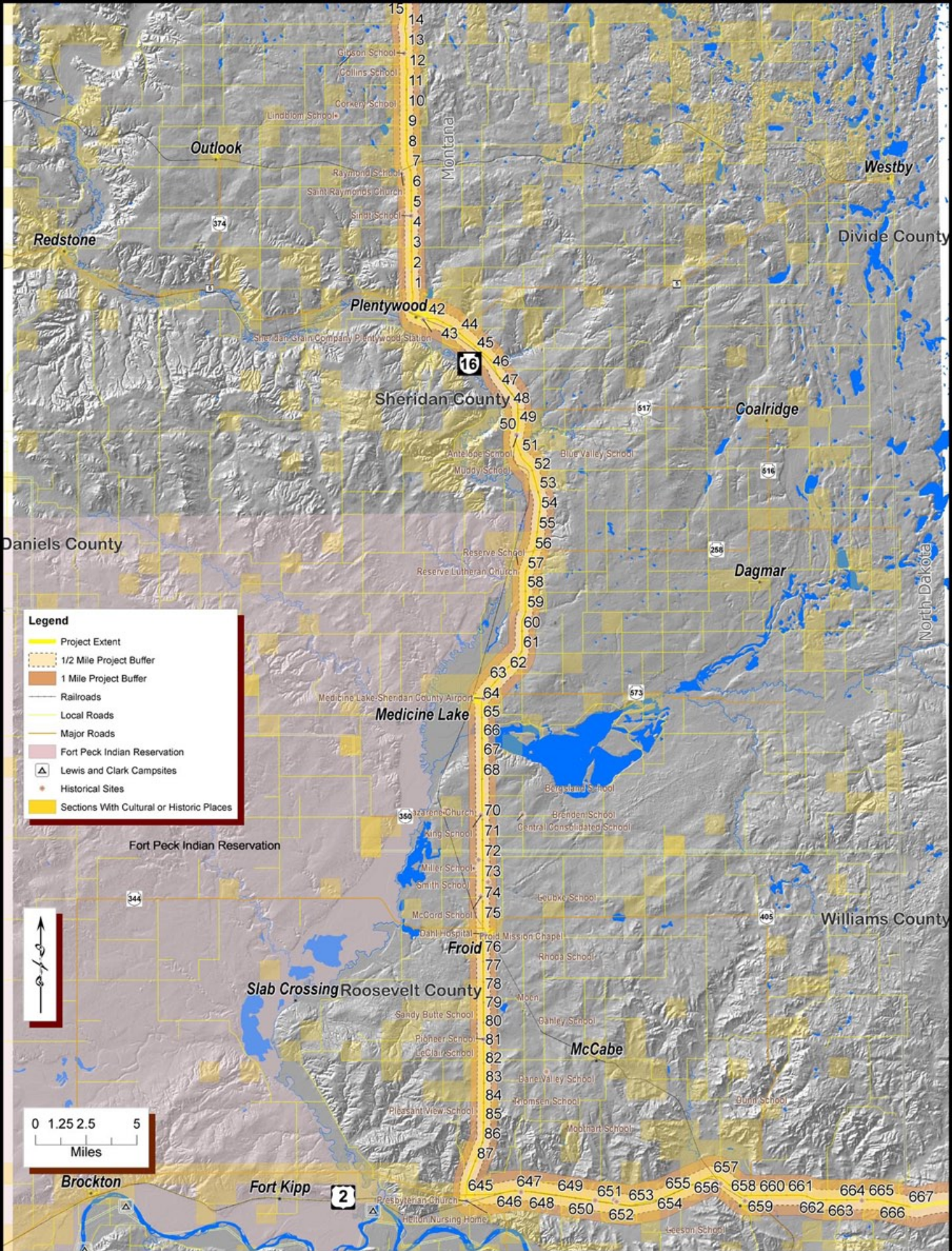


Figure 15:
Cultural Resources / Environmental Scan
Transportation Regional Economic Development Study
Theodore Roosevelt Expressway



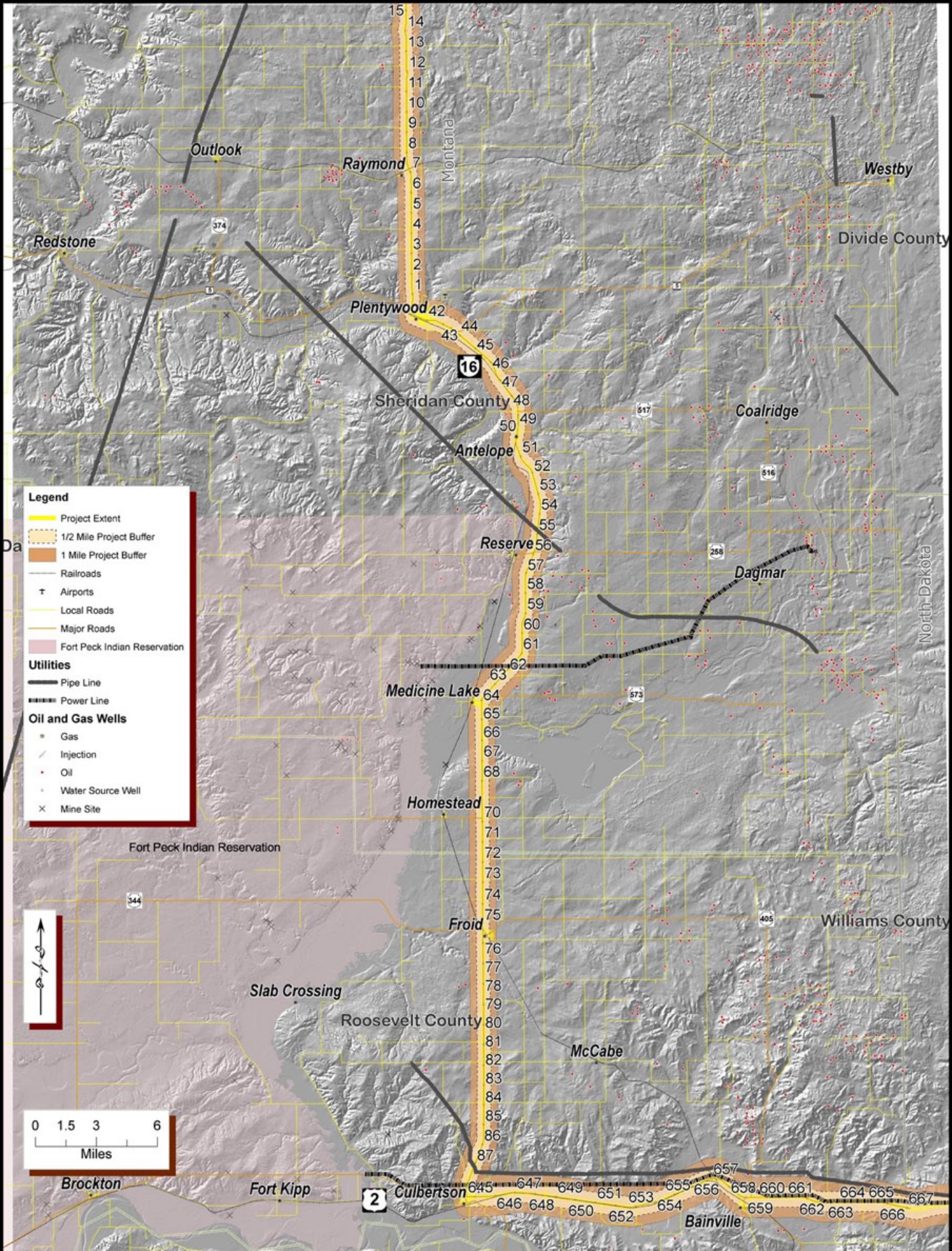


Figure 16:
Utilities / Environmental Scan
Transportation Regional Economic Development Study
Theodore Roosevelt Expressway



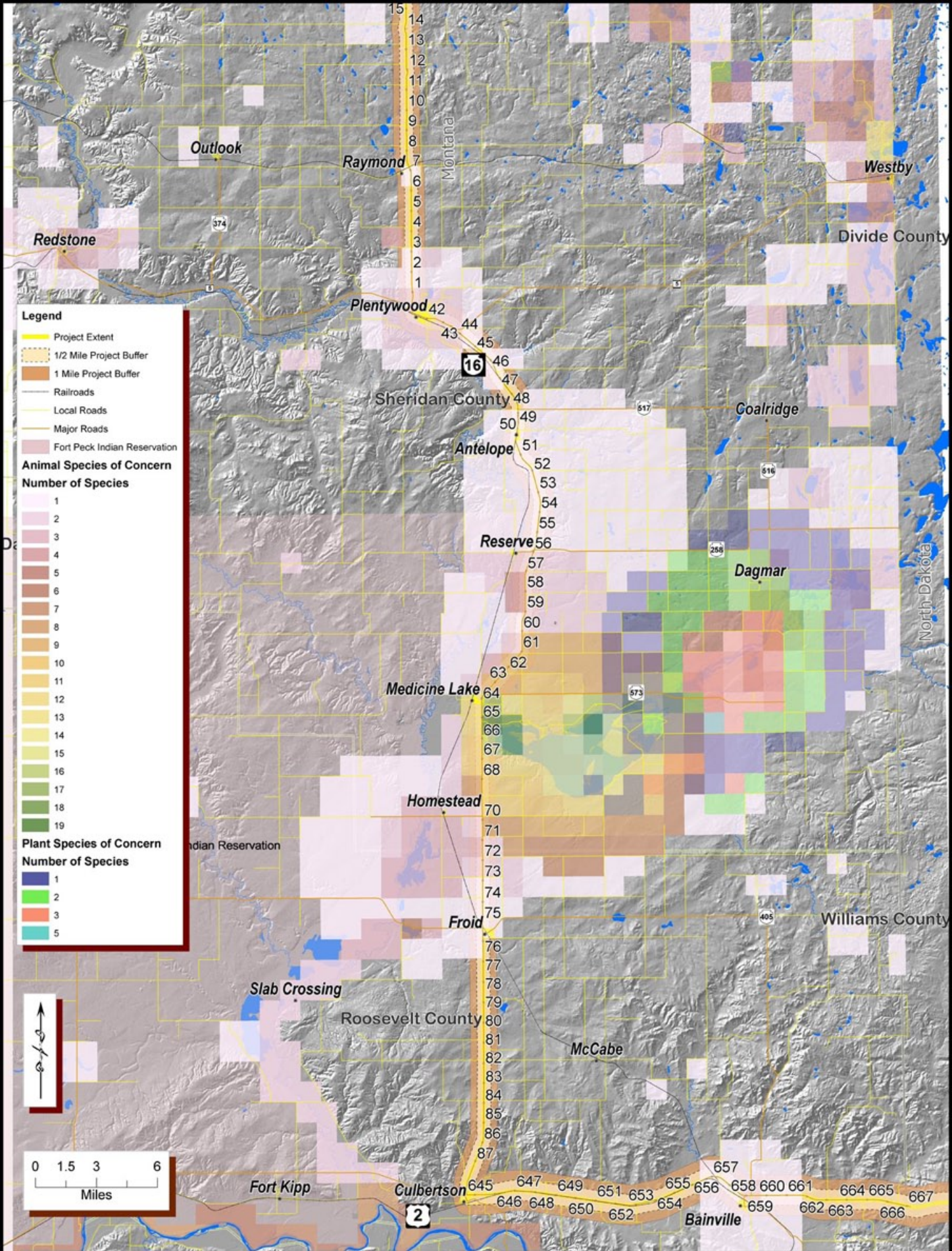


Figure 17:
Species of Concern / Environmental Scan
Transportation Regional Economic Development Study
Theodore Roosevelt Expressway

