

**Legend**

- Project Extent
- 1/2 Mile Project Buffer
- 1 Mile Project Buffer
- Water

**Fema Flood Zones**

- 100 Year Flood Zone A
- Culbertson: Not Included in Flood Maps

**Wetlands Areas**

- Palustrine
- Riverine

**Wetlands**

- Lacustrine
- Palustrine
- Riverine
- Water
- Wilderness Areas
- Wildlife Refuge Area
- Railroads
- Airports
- States

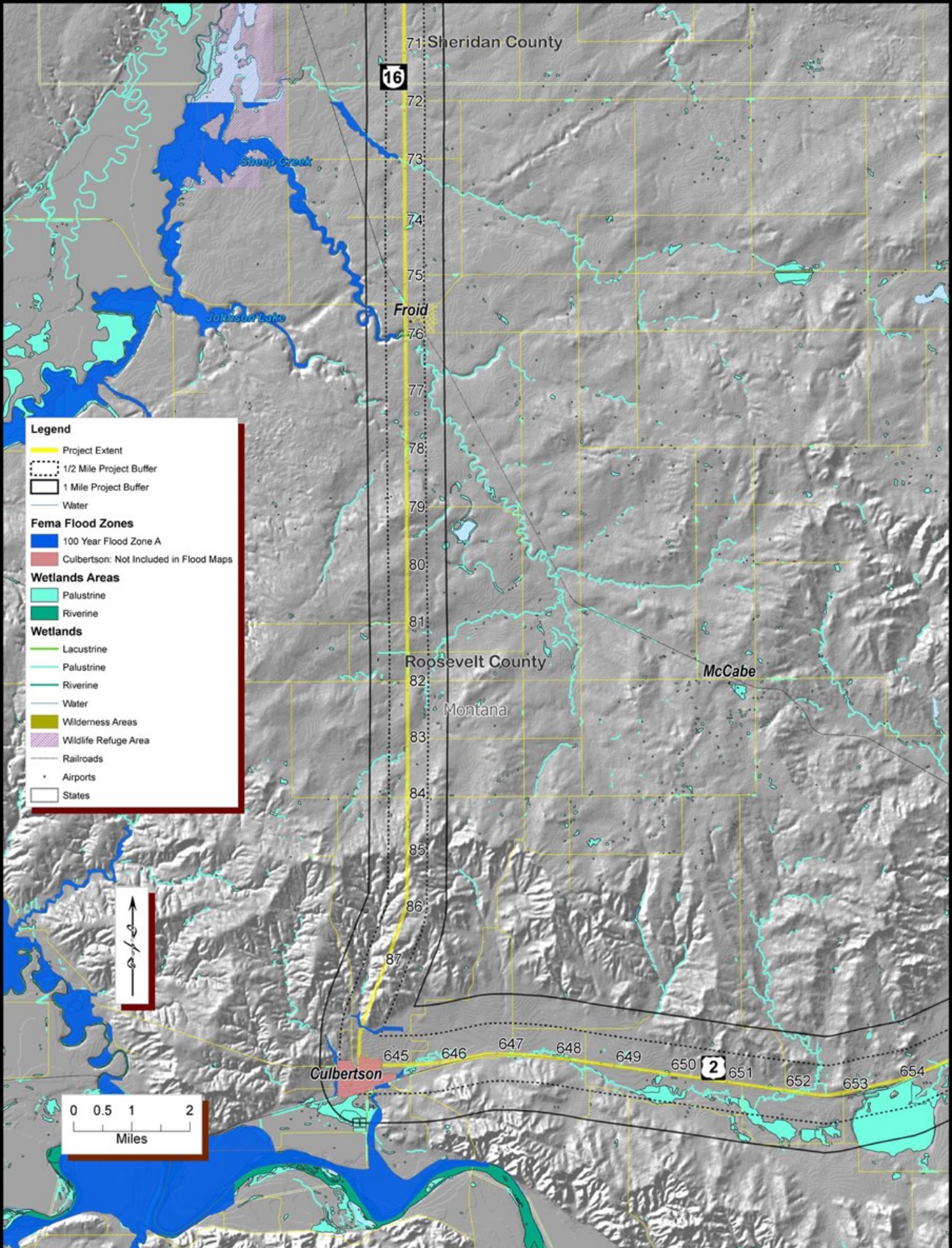
**Note: Floodplain maps not available for this area**

North Arrow

Scale: 0 0.5 1 2 Miles

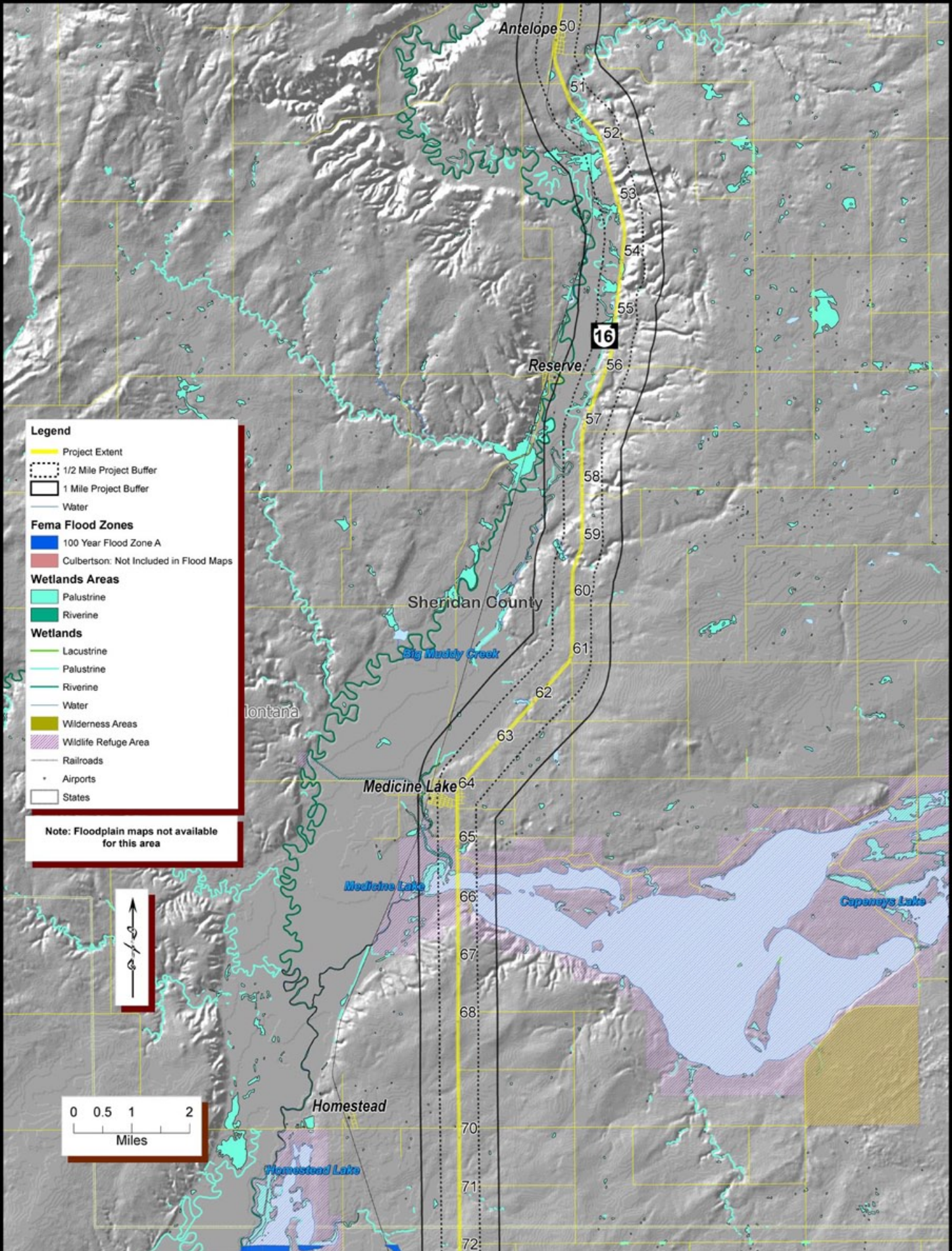
**Figure 7:**  
**Surface Water and Wetlands / North Dakota to Culbertson**  
**Transportation Regional Economic Development Study**  
**Theodore Roosevelt Expressway**





**Figure 8:**  
**Surface Water and Wetlands / Culbertson to MP 71**  
**Transportation Regional Economic Development Study**  
**Theodore Roosevelt Expressway**





**Legend**

- Project Extent
- 1/2 Mile Project Buffer
- 1 Mile Project Buffer
- Water

**Fema Flood Zones**

- 100 Year Flood Zone A
- Culbertson: Not Included in Flood Maps

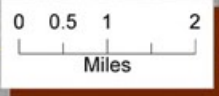
**Wetlands Areas**

- Palustrine
- Riverine

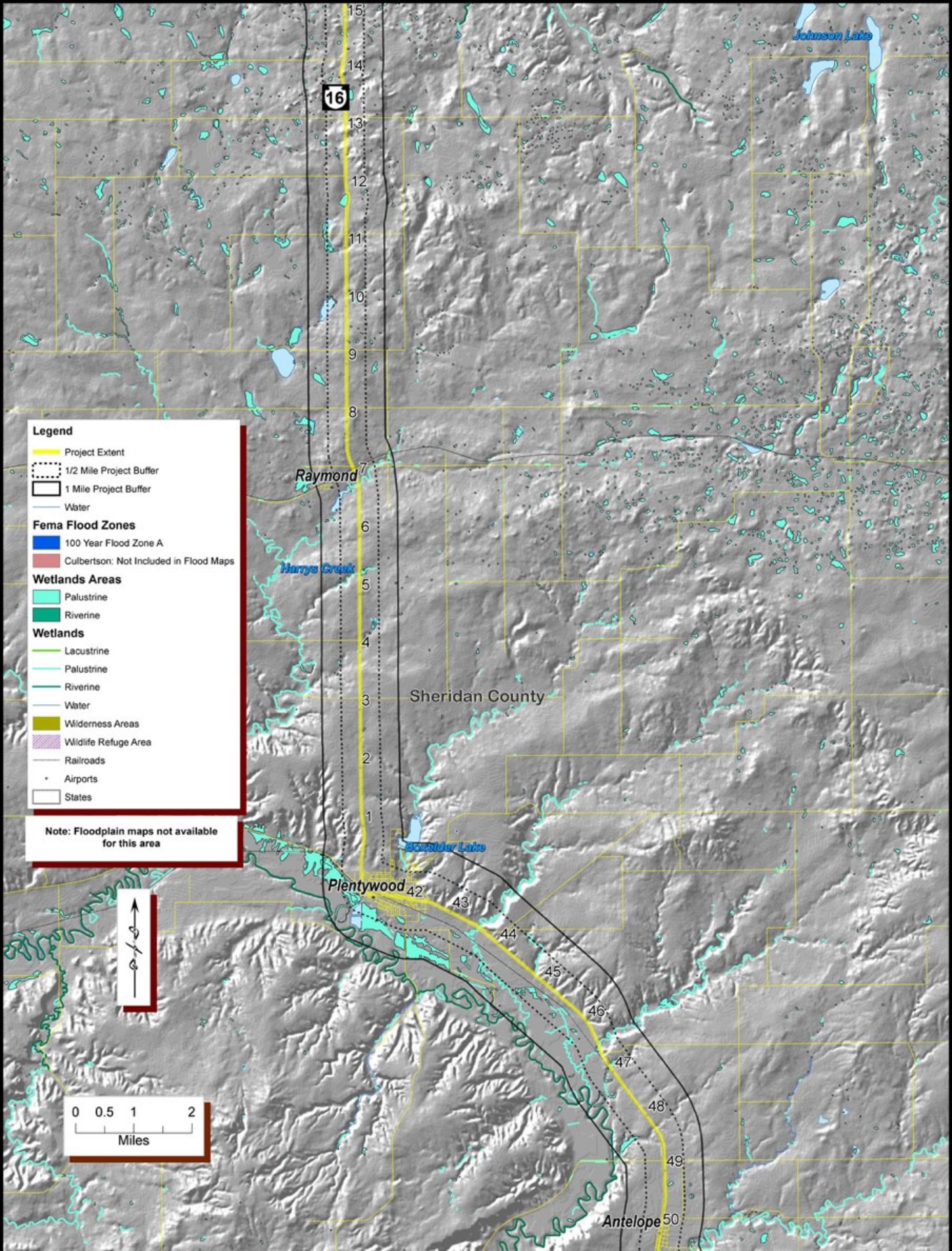
**Wetlands**

- Lacustrine
- Palustrine
- Riverine
- Water
- Wilderness Areas
- Wildlife Refuge Area
- Railroads
- Airports
- States

**Note: Floodplain maps not available for this area**



**Figure 9:**  
**Surface Water and Wetlands / MP 71 to Antelope**  
**Transportation Regional Economic Development Study**  
**Theodore Roosevelt Expressway**



**Figure 10:**  
**Surface Water and Wetlands / Antelope to Canada**  
**Transportation Regional Economic Development Study**  
**Theodore Roosevelt Expressway**