

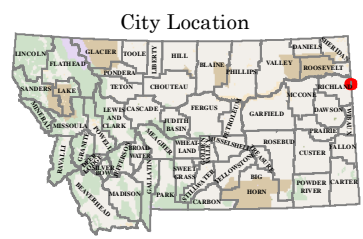
- SYSTEM DESIGNATIONS**
- NHS Interstate
  - NHS Non-Interstate
  - Primary
  - Secondary
  - Urban
  - State Maintained
  - Off System
  - Alley

- ROUTE SURFACE TYPE**
- Paved
  - Gravel
  - Unsurfaced

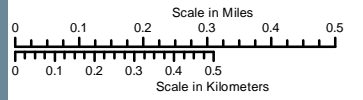
- ROUTE SIGNING**
- Interstate Highway
  - U.S. Highway
  - Montana Route
  - Route

- BOUNDARIES**
- County Line
  - City Boundary
  - National Park Service
  - Reservation
  - National Forest Service
  - State Park
  - US Fish Wildlife Service

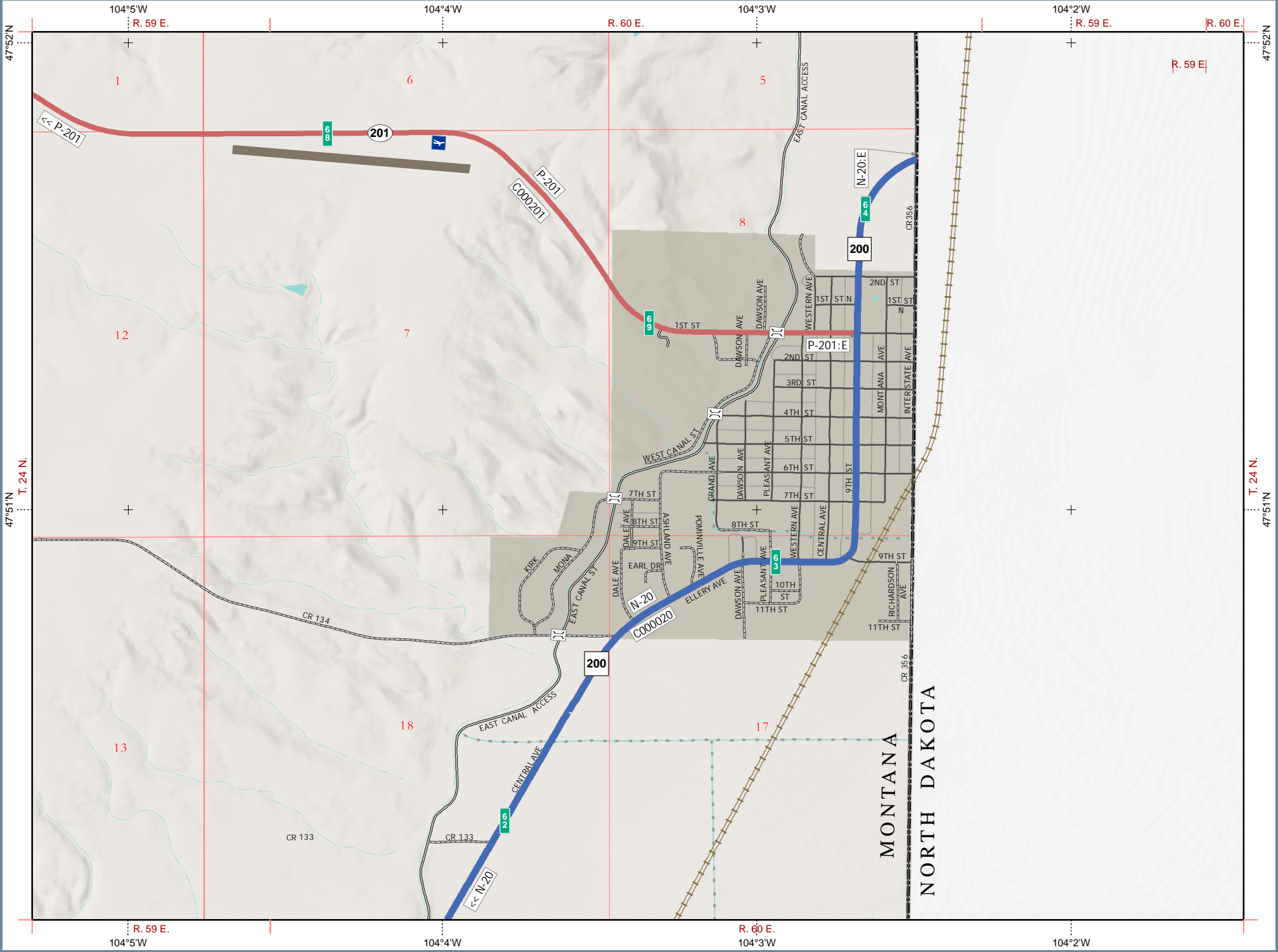
- OTHER SYMBOLS**
- Stream
  - Canal or Ditch
  - Reference Marker
  - Railroad
  - Public Airport
  - Bridge
  - Parking Area
  - Rest Area: Year-Round/Seasonal



PREPARED BY THE  
STATE OF MONTANA  
DEPARTMENT OF TRANSPORTATION  
GEOSPATIAL INFORMATION SECTION



NAD 1983 State Plane Montana FIPS 2500  
Lambert Conformal Conic



T. 24 N.  
47°51'N