

SYSTEM DESIGNATIONS

- NHS Interstate
- NHS Non-Interstate
- Primary
- Secondary
- Urban
- State Maintained
- Off System
- Alley

ROUTE SURFACE TYPE

- Paved
- Gravel
- Unsurfaced

ROUTE SIGNING

- Interstate Highway (90)
- U.S. Highway (93)
- Montana Route (3)
- Route (205)

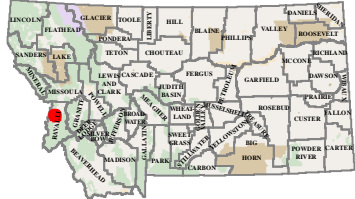
BOUNDARIES

- County Line
- City Boundary
- National Park Service
- Reservation
- National Forest Service
- State Park
- US Fish Wildlife Service

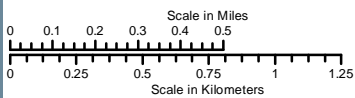
OTHER SYMBOLS

- Stream
- Canal or Ditch
- Water
- Reference Marker
- Railroad
- Public Airport
- Bridge
- Parking Area
- Rest Area: Year-Round/Seasonal

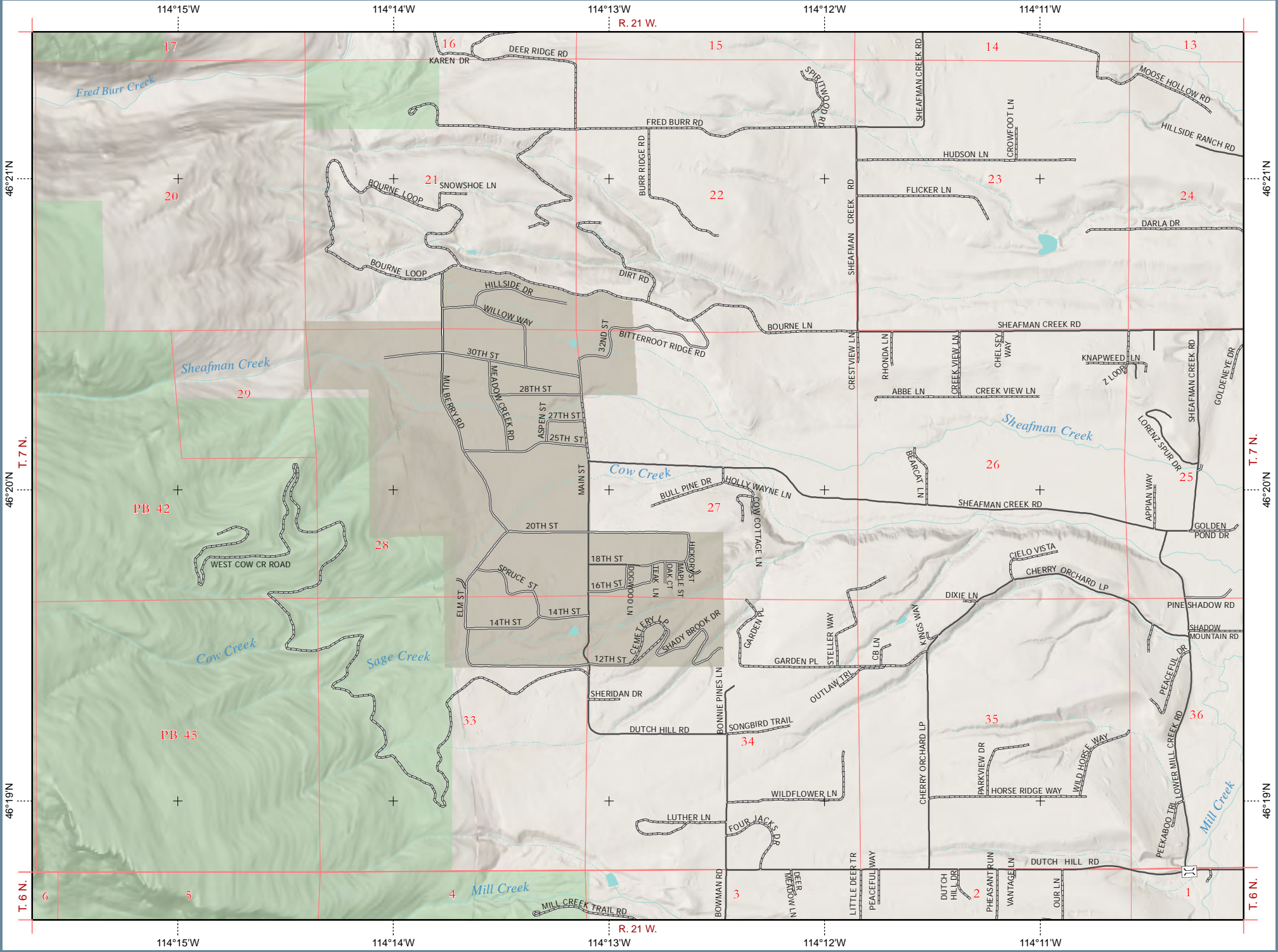
City Location



PREPARED BY THE
STATE OF MONTANA
DEPARTMENT OF TRANSPORTATION
GEOSPATIAL INFORMATION SECTION



NAD 1983 State Plane Montana FIPS 2500
Lambert Conformal Conic



46°21'N
T. 7 N.
46°20'N
T. 7 N.
46°19'N
T. 6 N.

46°21'N
T. 7 N.
46°20'N
T. 7 N.
46°19'N
T. 6 N.

114°15'W
114°14'W
114°13'W
R. 21 W.
114°12'W
114°11'W