

SYSTEM DESIGNATIONS

- NHS Interstate
- NHS Non-Interstate
- Primary
- Secondary
- Urban
- State Maintained
- Off System
- Alley

ROUTE SURFACE TYPE

- Paved
- Gravel
- Unsurfaced

ROUTE SIGNING

- Interstate Highway
- U.S. Highway
- Montana Route
- Route

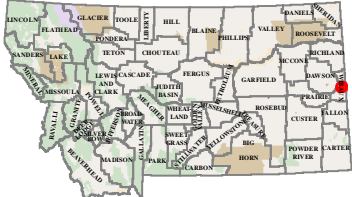
BOUNDARIES

- County Line
- City Boundary
- National Park Service
- Reservation
- National Forest Service
- State Park
- US Fish Wildlife Service

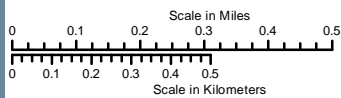
OTHER SYMBOLS

- Stream
- Canal or Ditch
- Water
- Reference Marker
- Railroad
- Public Airport
- Bridge
- Parking Area
- Rest Area: Year-Round/Seasonal

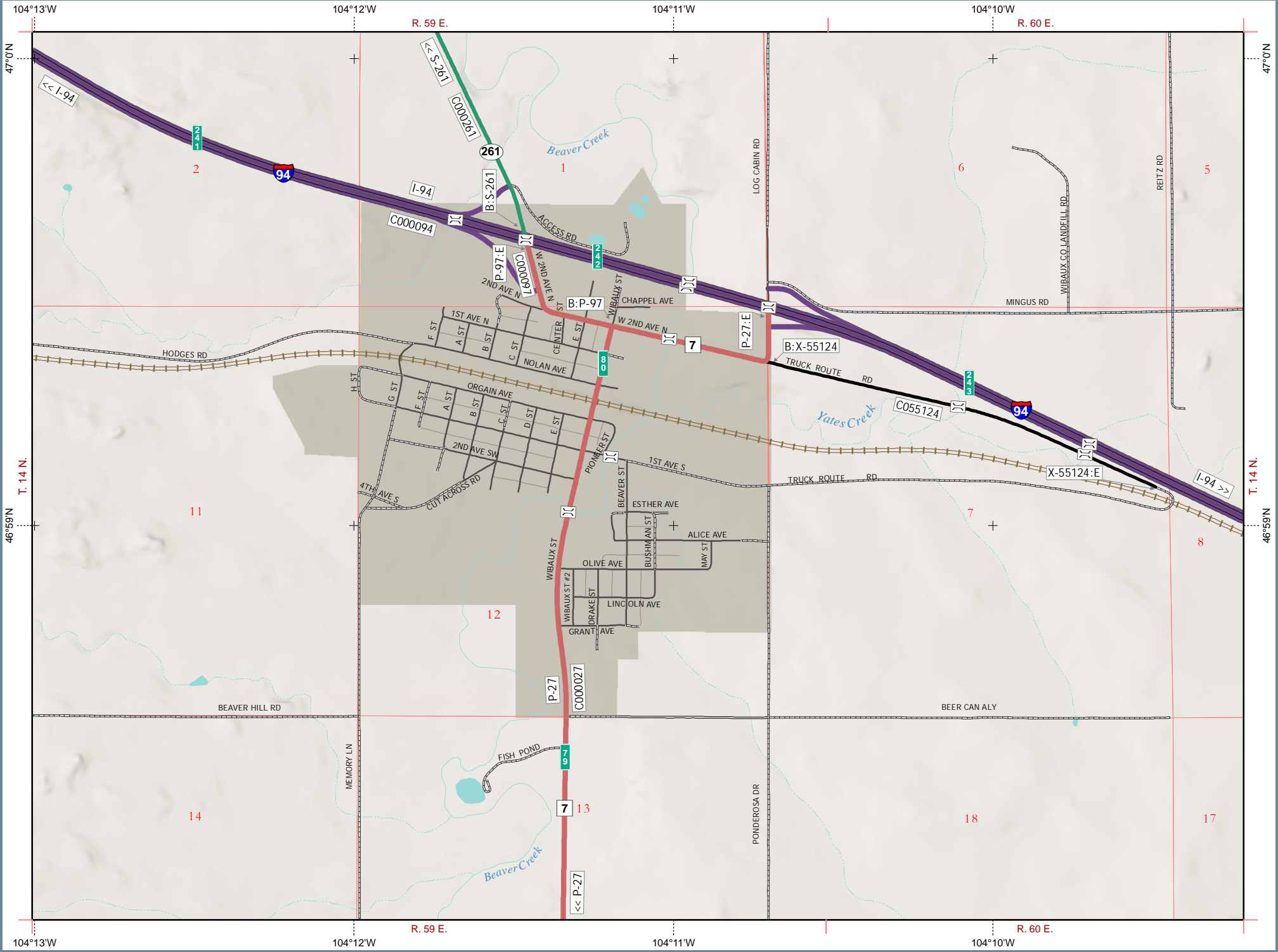
City Location



PREPARED BY THE
STATE OF MONTANA
DEPARTMENT OF TRANSPORTATION
GEOSPATIAL INFORMATION SECTION



NAD 1983 State Plane Montana FIPS 2500
Lambert Conformal Conic



104°13'W 104°12'W 104°11'W 104°10'W
47°0'N 46°59'N