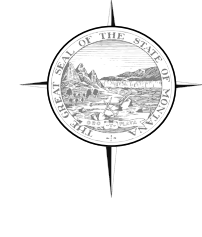


LAUREL YELLOWSTONE COUNTY

Sheet 4B of 5 County Map Sheets
and 2 Urban Area Maps

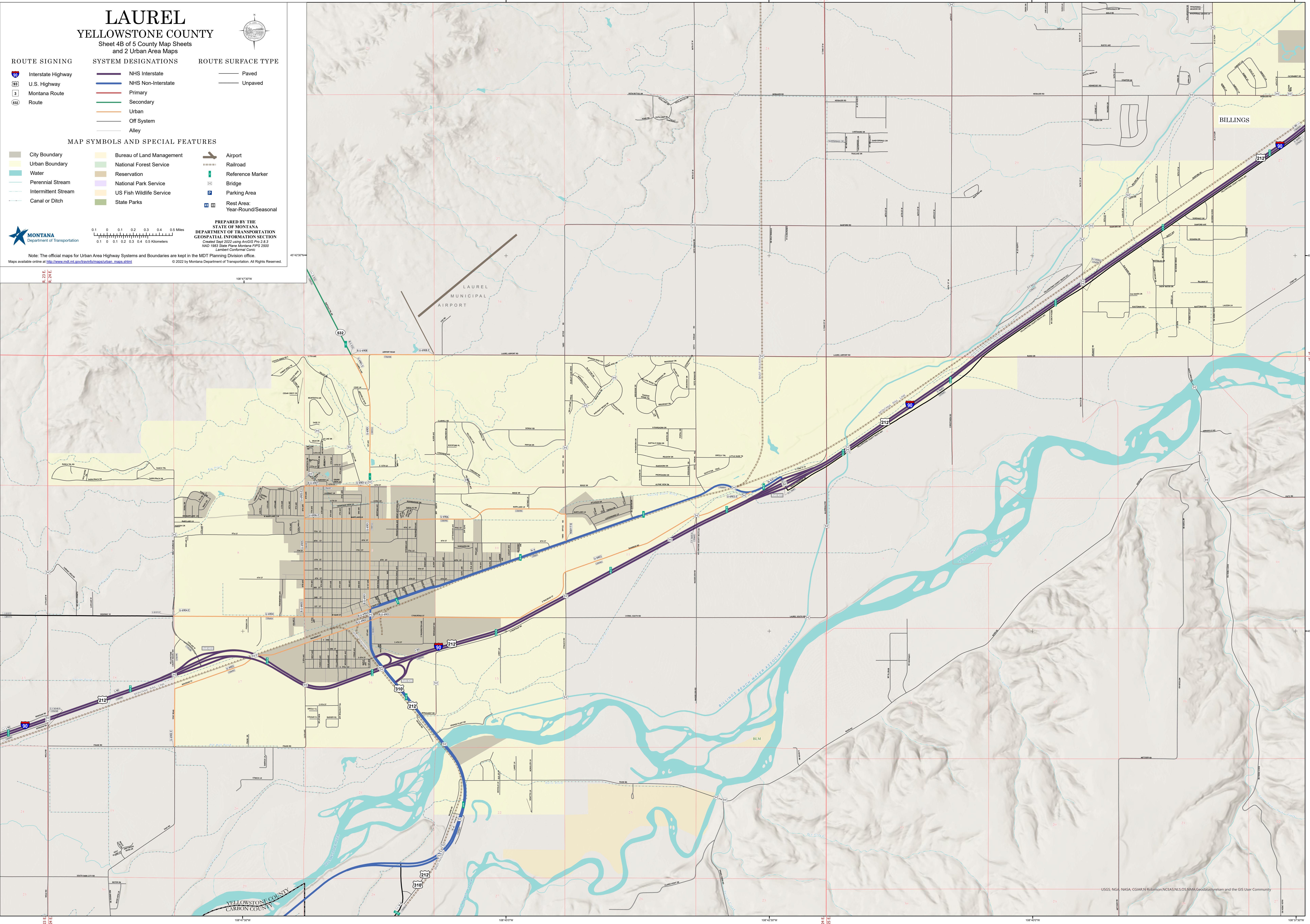


- | | | |
|----------------------|----------------------------|---------------------------|
| ROUTE SIGNING | SYSTEM DESIGNATIONS | ROUTE SURFACE TYPE |
| Interstate Highway | NHS Interstate | Paved |
| U.S. Highway | NHS Non-Interstate | Unpaved |
| Montana Route | Primary | |
| Route | Secondary | |
| | Urban | |
| | Off System | |
| | Alley | |

- MAP SYMBOLS AND SPECIAL FEATURES**
- | | | |
|---------------------|---------------------------|--------------------------------|
| City Boundary | Bureau of Land Management | Airport |
| Urban Boundary | National Forest Service | Railroad |
| Water | Reservation | Reference Marker |
| Perennial Stream | National Park Service | Bridge |
| Intermittent Stream | US Fish Wildlife Service | Parking Area |
| Canal or Ditch | State Parks | Rest Area: Year-Round/Seasonal |

Note: The official maps for Urban Area Highway Systems and Boundaries are kept in the MDT Planning Division office.
 Maps available online at http://www.mdt.mt.gov/traffic/maps/urban_maps.shtml

**PREPARED BY THE
STATE OF MONTANA
DEPARTMENT OF TRANSPORTATION
GEOSPATIAL INFORMATION SECTION**
 Created Sept 2022 using ArcGIS Pro 2.8.3
 NAD 1983 State Plane Montana FIPS 2500
 Lambert Conformal Conic



USGS, NOAA, NASA, CGIAR, Robinson, NCEAS, NLS, OS, DMA, Goodstart, resnet and the GIS User Community