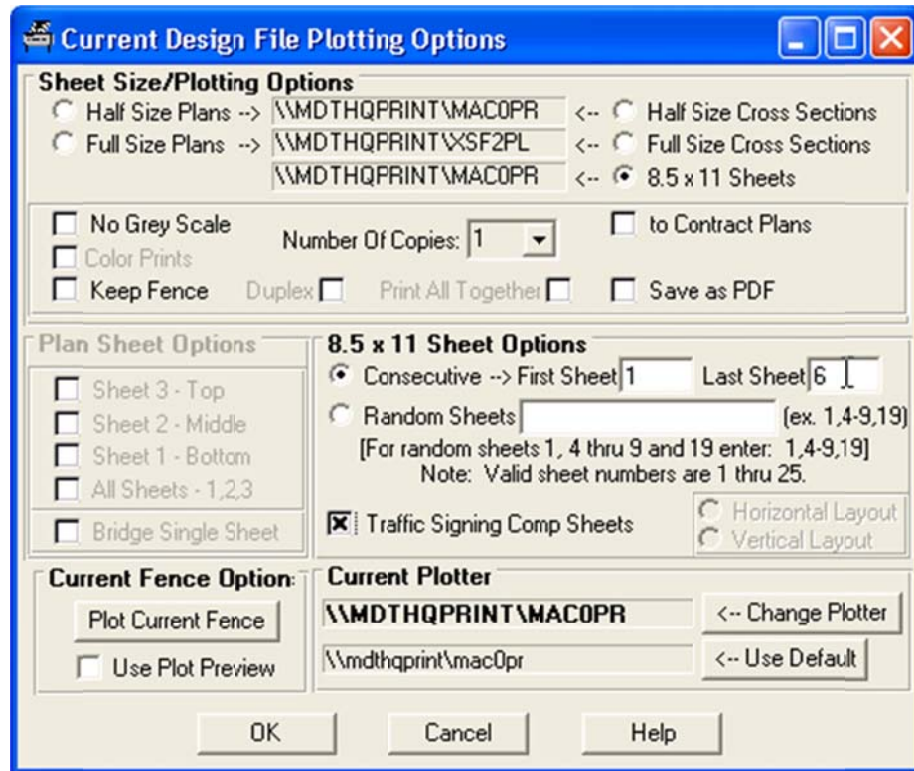


## Plotting Traffic Sign Design Calculation Sheets with Docuplot

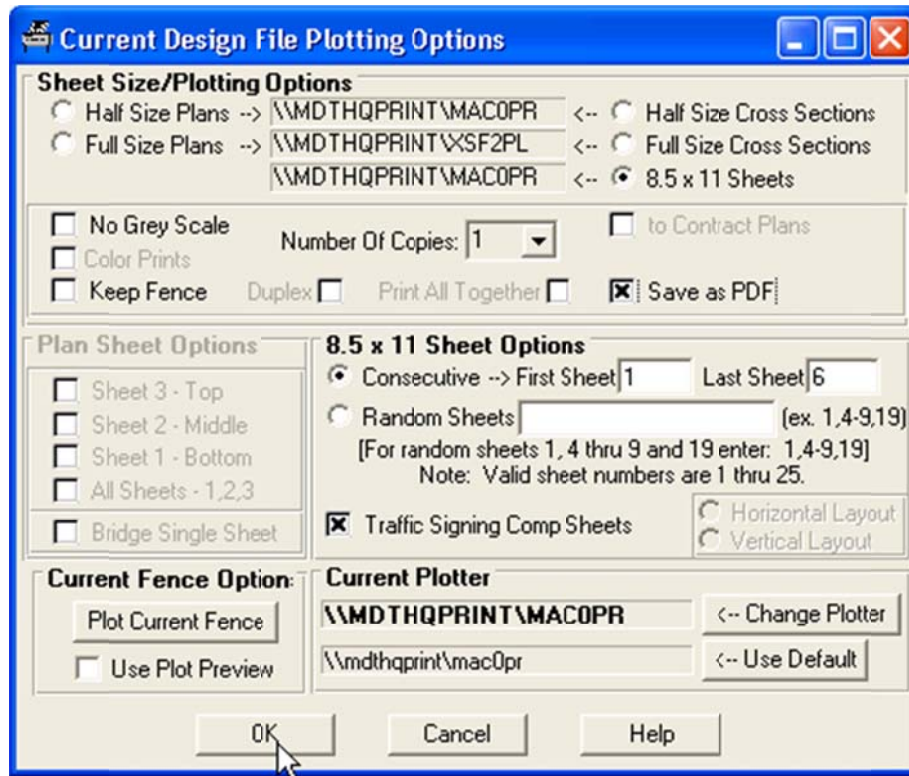
To plot the Sign Design Calculation sheets with Docuplot the user needs to:

1. Start Microstation and Docuplot.
2. Open the Traffic Sign Design Calculation design file in Microstation.
3. Select the **Plot Current Design File** command button on the *MDT Docuplot* form.
4. On the *Current Design File Plotting Options* form:
  - a. Select the **8.5 x 11 Sheets** option in the *Sheet Size/Plotting Options* section.
  - b. Select the **Traffic Signing Comp Sheets** option in the *8.5 x 11 Sheet Options* section.
  - c. Enter the sheets to be plotted in the Consecutive or Random Sheets text entry boxes in the *8.5 x 11 Sheet Options* section.
  - d. Select the **OK** button to print the sheet pages on letter paper on the printer shown in the label next to the 8.5 x 11 Sheets option.



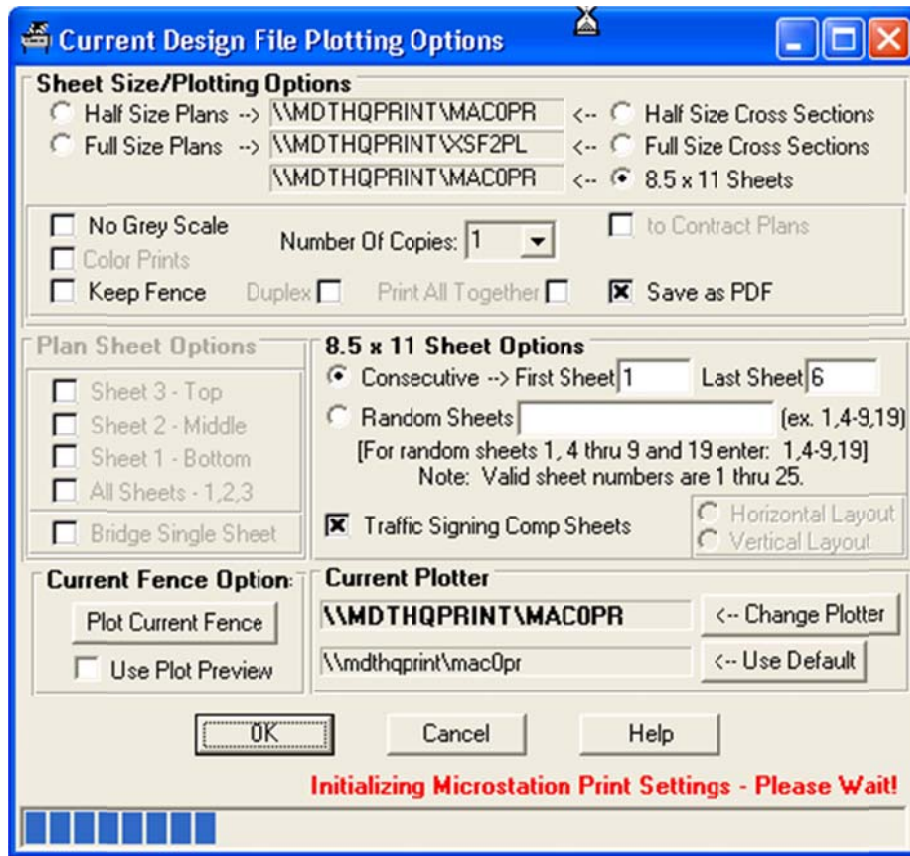
## Plotting Traffic Sign Design Calculation Sheets with Docuplot

5. To create a PDF instead of printing to a printer select the **Save as PDF** option in the *Sheet Size/Plotting Options* section, as shown below.

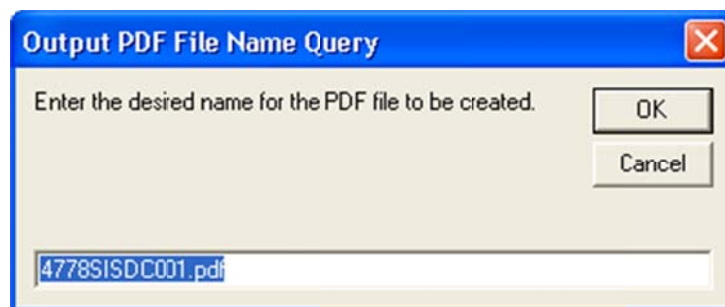


## Plotting Traffic Sign Design Calculation Sheets with Docuplot

6. Select the **OK** button to generate a single PDF containing all of the letter size pages in the C:\Dgn\ folder on your local computer. A progress label and bar on the bottom of the form will update to notify you of the status of the PDF file generation process.

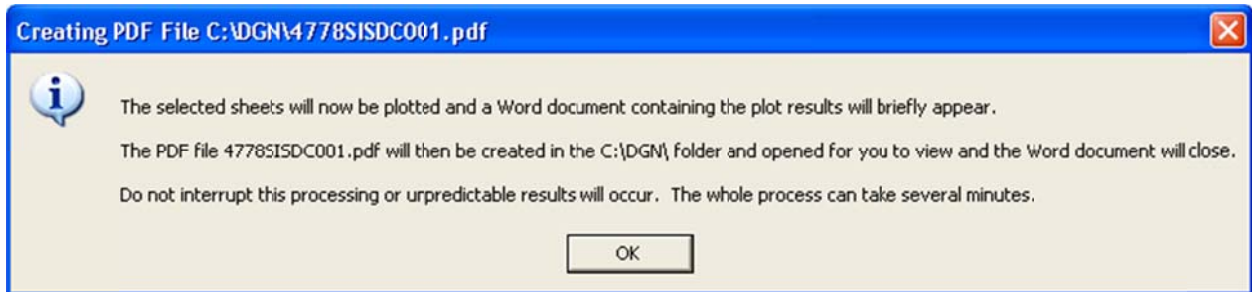


A window will display prompting for the desired name for the PDF file to be created.

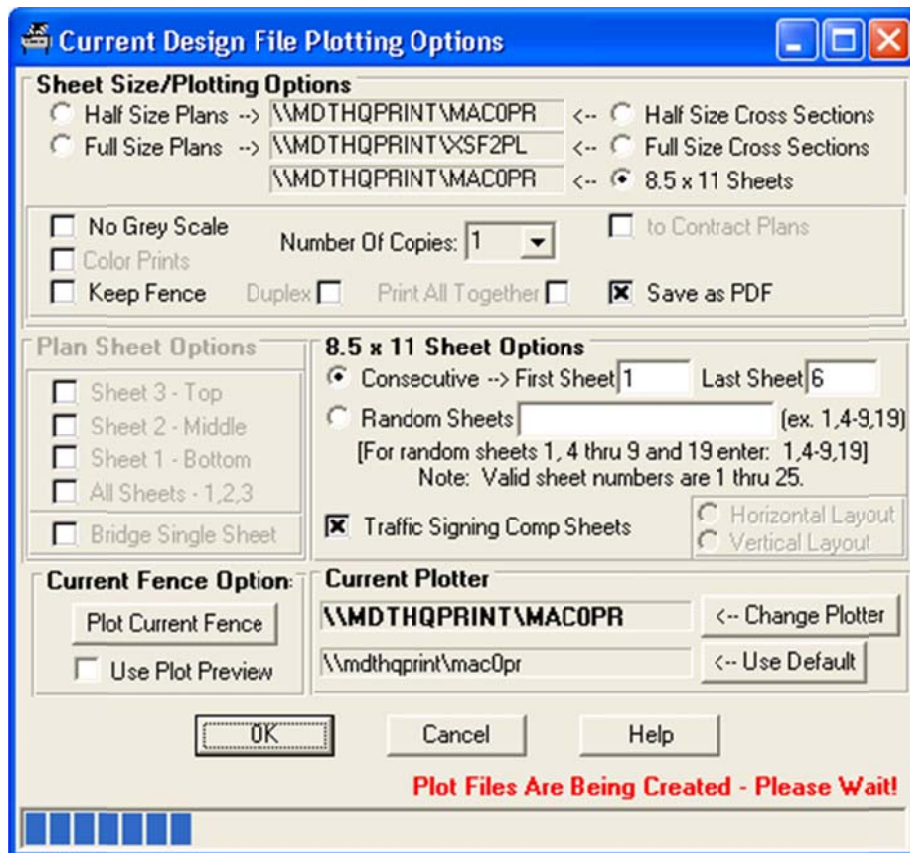


## Plotting Traffic Sign Design Calculation Sheets with Docuplot

After entering the desired name and selecting the OK button a window will display notifying you that the process to create the design file in your C:\DGN\ folder will start and to not interrupt. Select **OK** to continue the process.

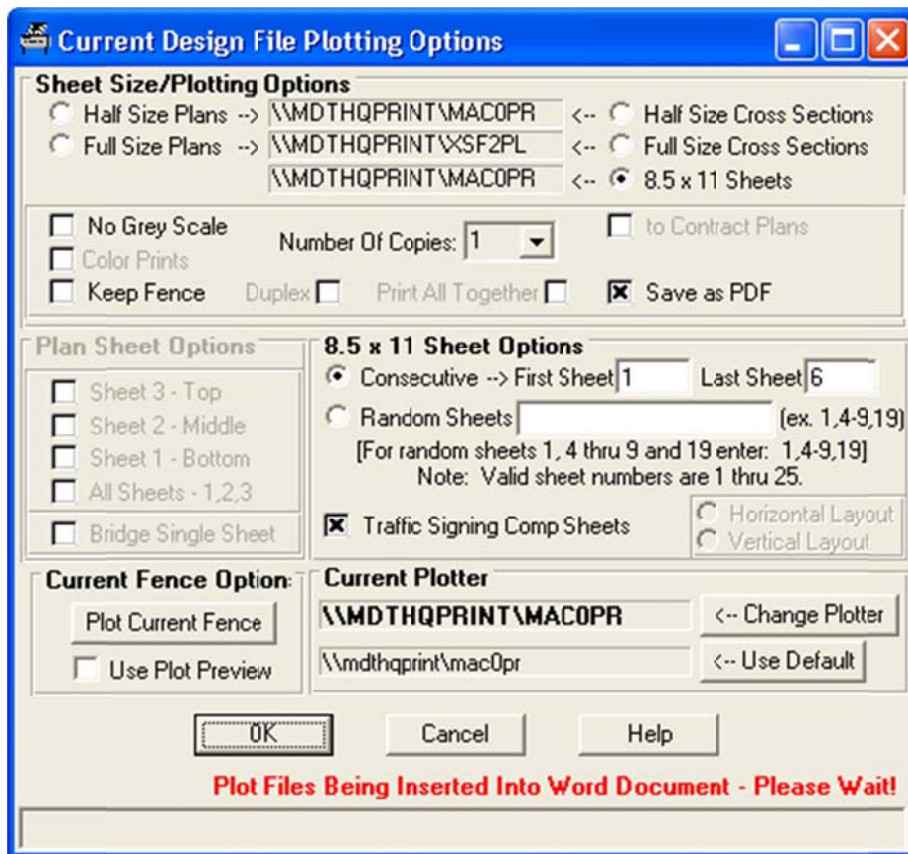


The progress label and bar will update to show the plot file creation process.



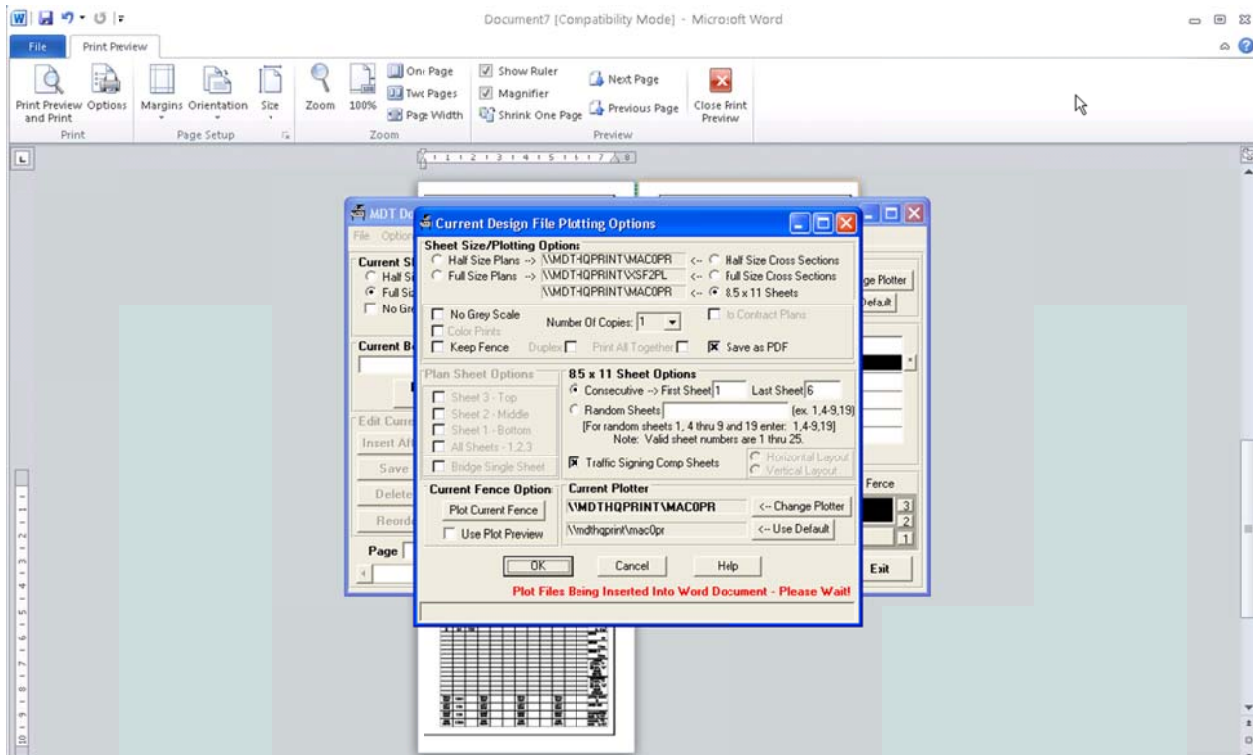
## Plotting Traffic Sign Design Calculation Sheets with Docuplot

The progress label and bar will then update to show the plot files are being inserted into a Word document.



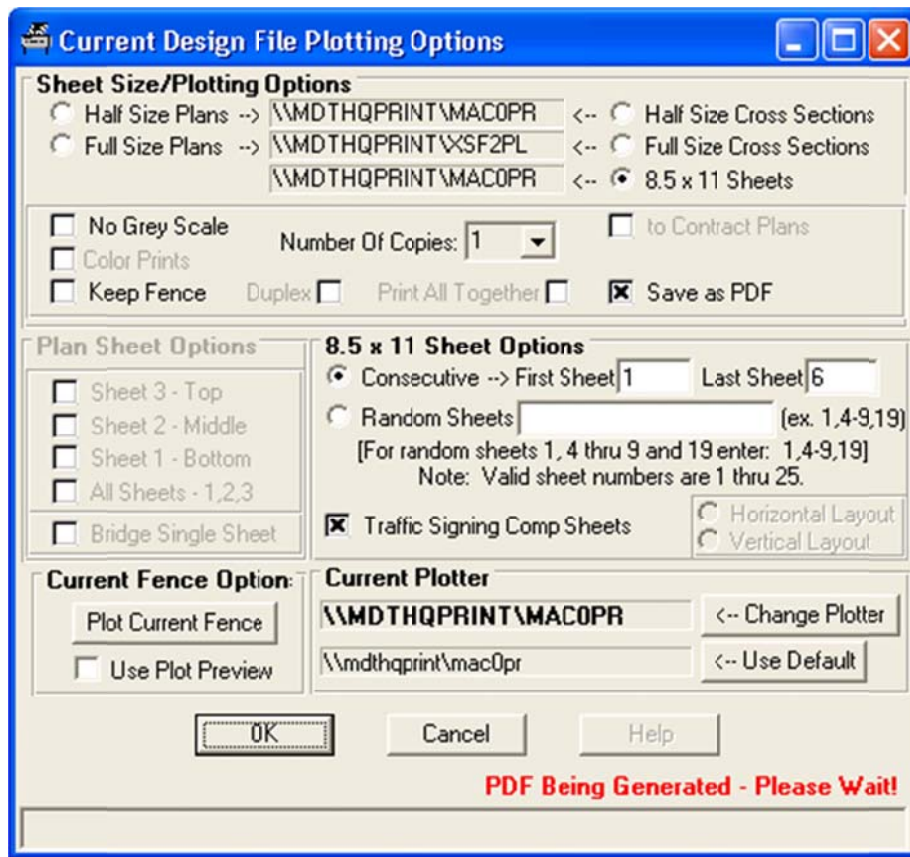
## Plotting Traffic Sign Design Calculation Sheets with Docuplot

Word will open and you will see the plot files being inserted into the Word document.

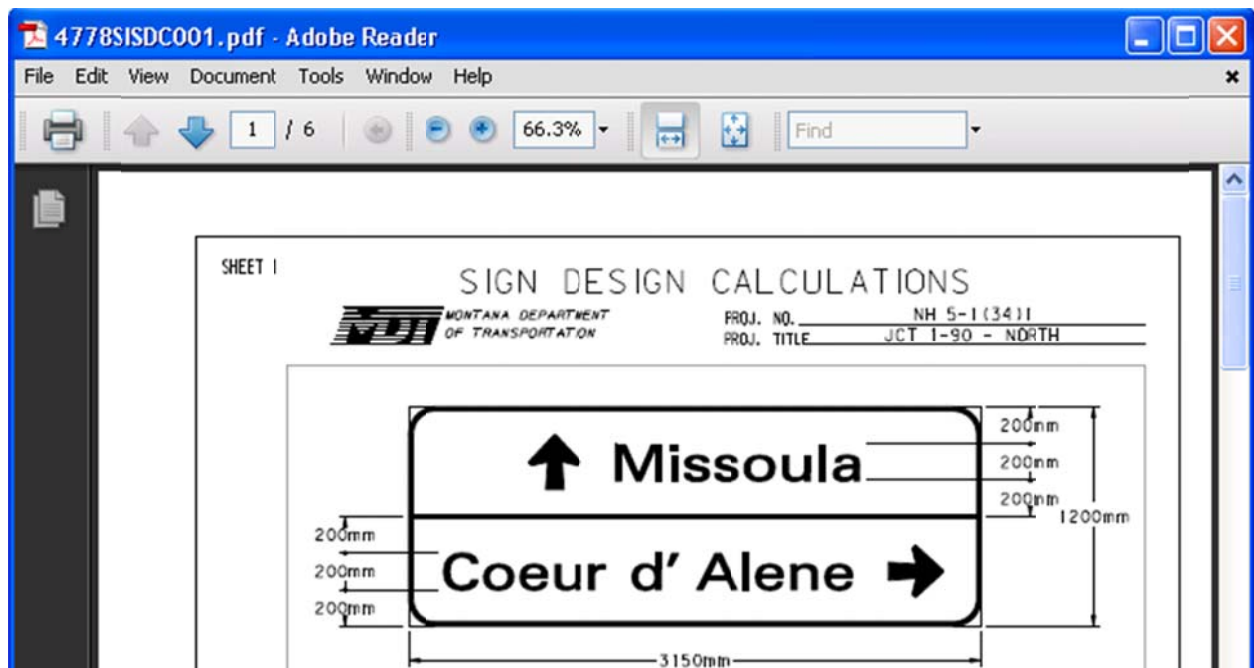


## Plotting Traffic Sign Design Calculation Sheets with Docuplot

The progress label and bar will then update to show the PDF file is being generated.

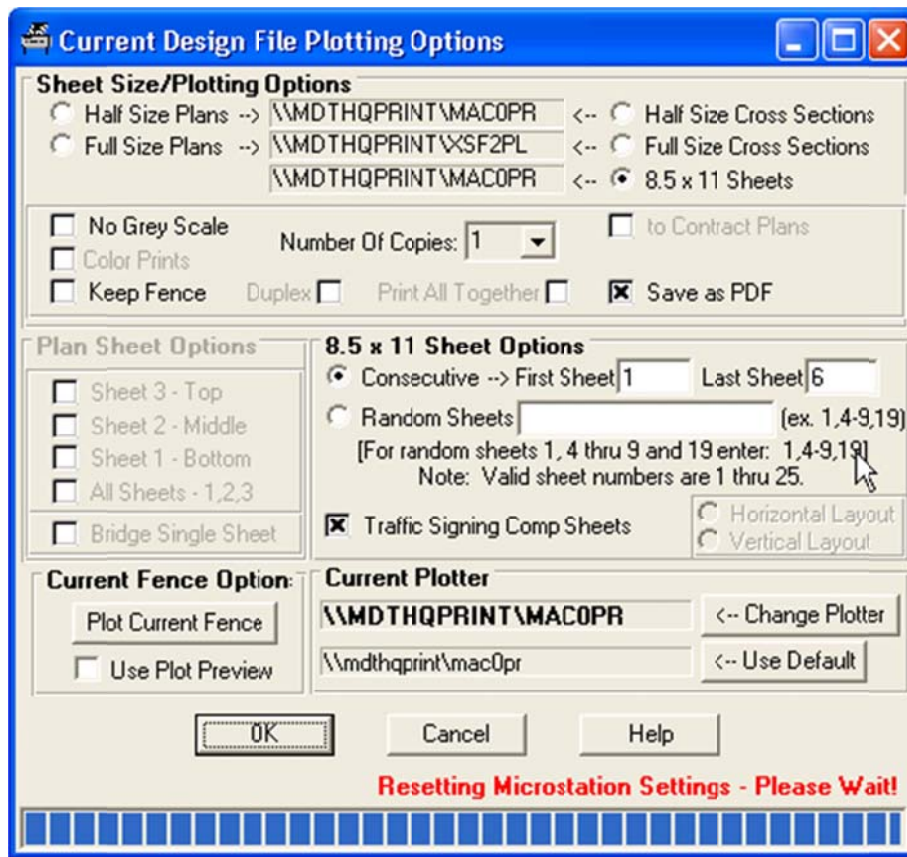


Word will close and the PDF will be opened in Adobe Reader when the PDF creation has been completed.



## Plotting Traffic Sign Design Calculation Sheets with Docuplot

The progress label and bar will update to show the Microstation Settings are being reset.



The *Current Design File Plotting Options* window will close when the process is done.