

MICROSTATION ELECTRICAL DETAIL SHEETS

Contents

CONTENTS	1
OVERVIEW	2
Process Provenance	2
STATEMENT OF NEED	2
REFERENCES	2
PROCESS DESCRIPTION AND EXAMPLES	3
Section I. Create Electrical Detail Sheet.....	3
Procedure – Create Detail Sheet with Manual Process.....	3
Section II. Place Detail Drawing	4
Procedure – Place Detail Drawing using Traffic Macro	4

Overview

This document provides the process for developing electrical detail sheets and placing details into the sheet.

Process Provenance

- Date of development: *8/30/2021*
- Revision date: *N/A*
- Application/Tool(s): *MicroStation V8i SS10*
- Version(s): *08.11.09.916*
- Environment(s): *GEOPAK (Legacy) / OpenRoads (Enhanced) Workspaces*
- Author: *Daniel Cunningham*

Statement of Need

A user will learn how to develop Electrical detail sheets and properly access details delivered in the workspace for placement to make project specific adjustments.

References

[Consultant Workspace Installation Instructions](#)

[Consultant Workspace Update Instructions](#)

Process Description and Examples

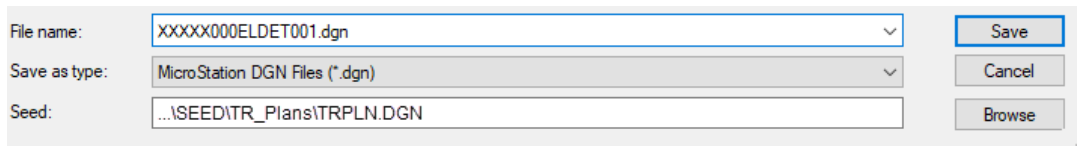
Section I. Create Electrical Detail Sheet

Procedure – Create Detail Sheet with Manual Process

1. Launch **MicroStation** with the following configuration:
 - a. Workspace = **Legacy** or **Enhanced** (based off the recommendation in the AGR or SOW Report)
 - b. Project = **MDT_TR_Electrical** (Preconstruction Startup **Traffic Electrical** Workgroup)
2. Create **New File**.



3. To select the Seed:, click **“Browse”**.
4. Go into the **“TR_Plans”** folder.
5. Select the **“TRPLN”** file.
6. Name the file according to MDT file naming standards and **“Save”**.



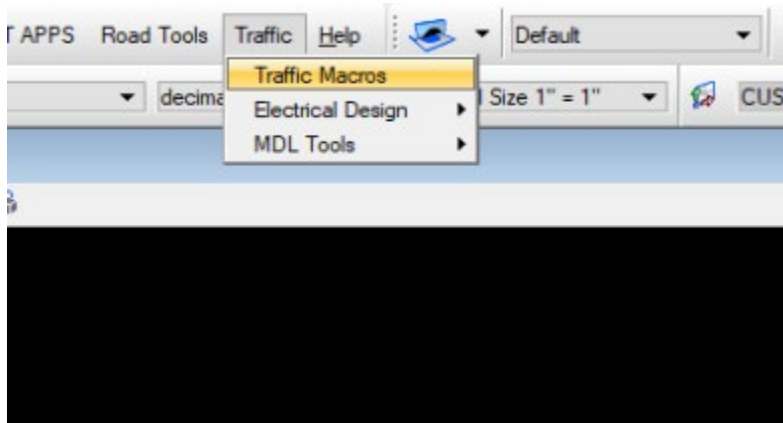
7. Open the file.

Section II. Place Detail Drawing

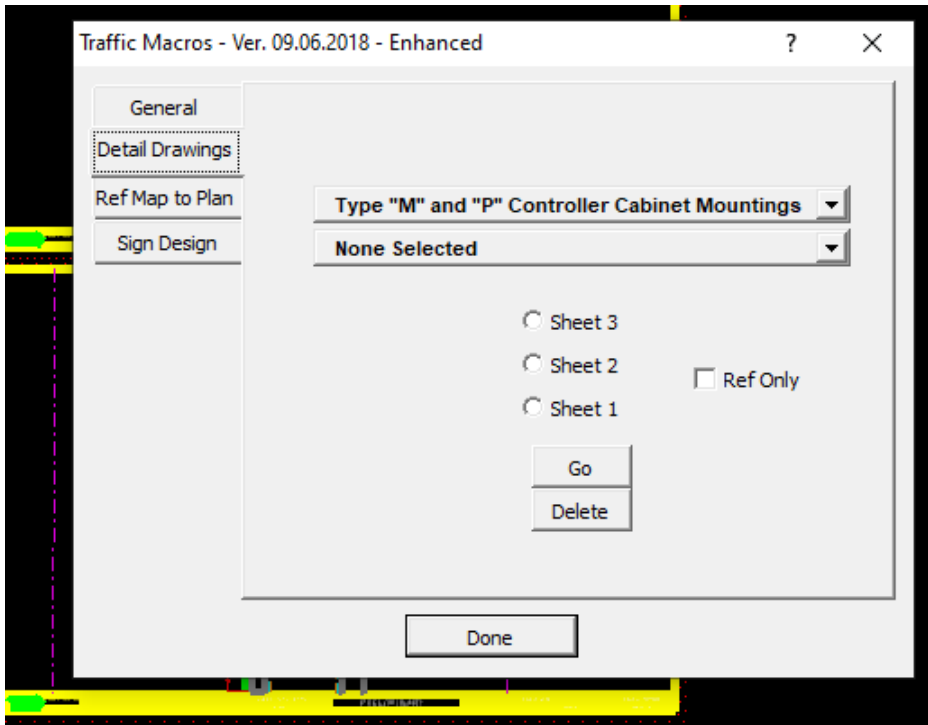
Procedure – Place Detail Drawing using Traffic Macro

1. Within the Electrical Detail file, **click** the “**Traffic**” pulldown and **select** “**Traffic Macros**”.

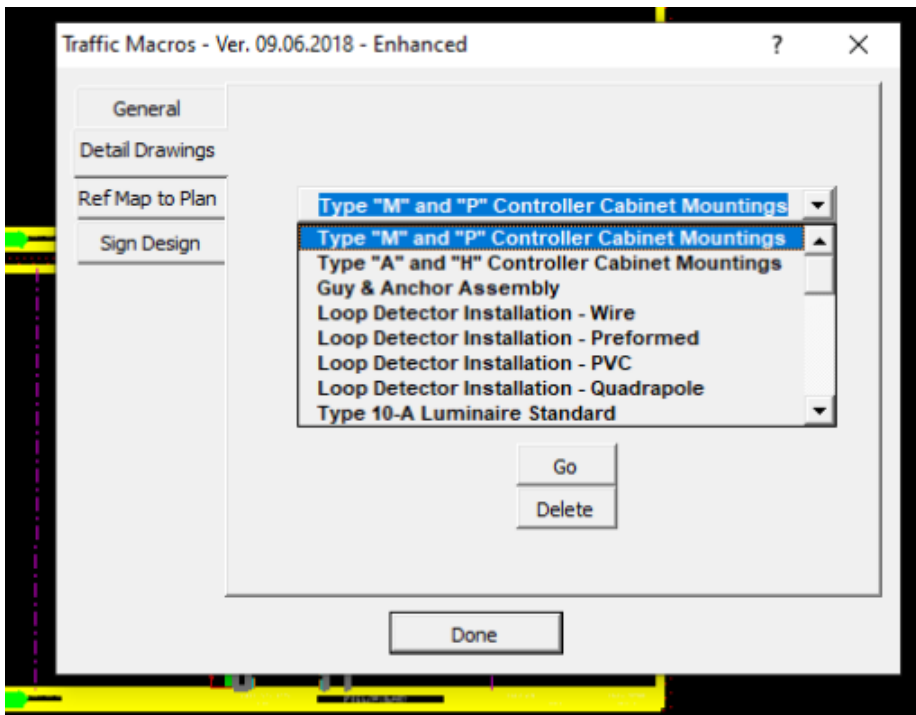
Note: Traffic macros are only operational with an “EL” “GE” or “SI” file open.



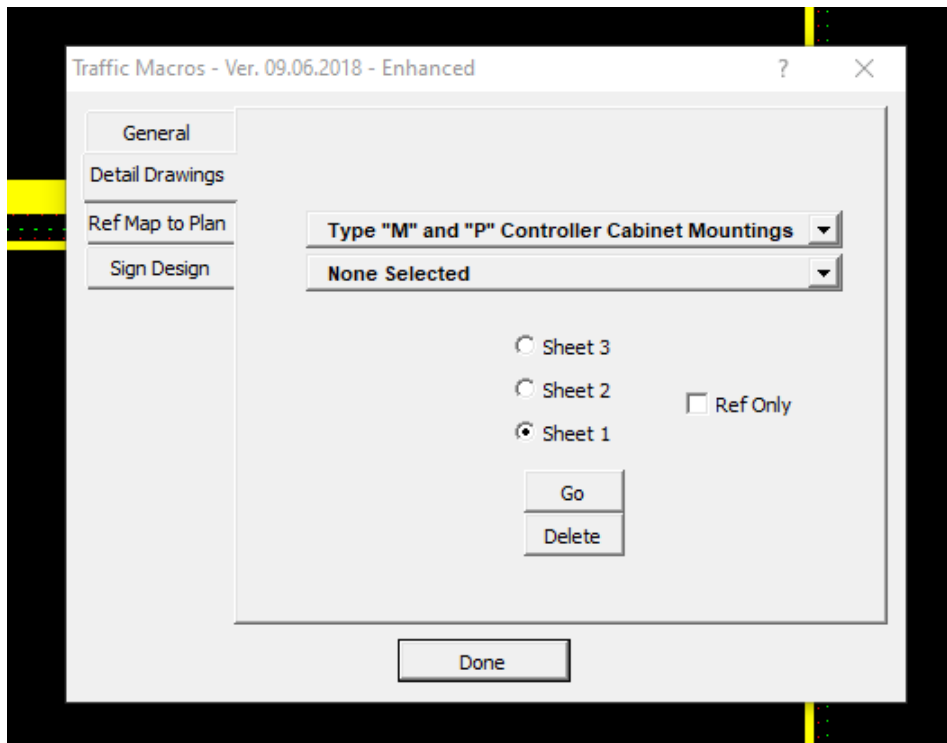
2. The Traffic Macros dialog box will appear. **Choose “Detail Drawings”.**



3. Select the detail drawing to add into the plans from the list. Scroll down for more options.



- Choose the sheet position you want the detail drawing on (“**Sheet 1**”, “**Sheet 2**”, “**Sheet 3**”). Click “**Go**”. The detail drawing will display on the selected sheet.



Note: Detail drawing files are referenced and merged from the Workgroup\ELSTD folder location within the Geopak (Legacy) and OpenRoads (Enhanced) workspaces. See [Consultant Workspace Installation Instructions](#) and [Consultant Workspace Update Instructions](#) for set up.

- Repeat steps 3 and 4 for additional detail drawings. Click “**Done**” when you are finished to close the Traffic Macros dialog.
- Complete detail drawing edits per project needs.