



MONTANA

Department of Transportation

August 2024

Autodesk Desktop Connector Start Up
Guide

BUILD 16.9.1.2222

TABLE OF CONTENTS

Table of Contents	2
Overview	3
References	3
Autodesk Desktop Connector	3
Welcome to Autodesk Desktop Connector.....	3
Selecting Your Desktop Connector Projects	5
Autodesk Desktop Connector Guide.....	6
Autodesk Desktop Connector Status	7

OVERVIEW

The Autodesk Desktop Connector is a desktop service that integrates an Autodesk data management source (or data source) with your desktop folder and file structure for easy file management. It is a virtual drive, or bridge, between your local file system and the Autodesk Construction Cloud.

REFERENCES

[What Is Desktop Connector? | Desktop Connector 2023 | Autodesk Knowledge Network](https://help.autodesk.com/view/CONNECT/ENU/?guid=What_Is_Desktop-Connector)

https://help.autodesk.com/view/CONNECT/ENU/?guid=What_Is_Desktop-Connector

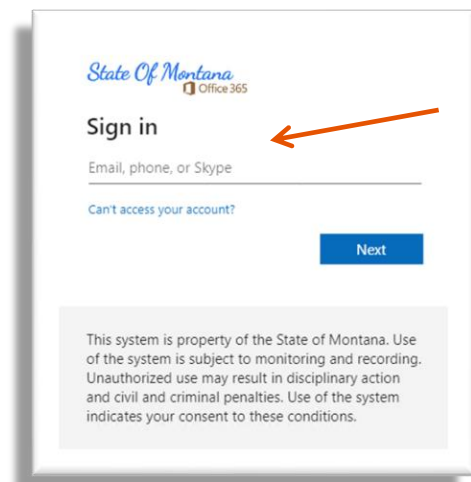
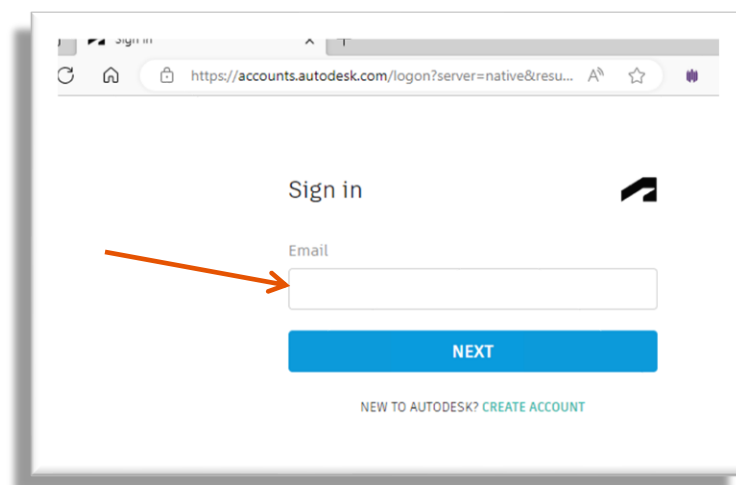
[User Guide | Desktop Connector | Autodesk](#)

https://help.autodesk.com/view/CONNECT/ENU/?guid=What_Is_Desktop-Connector

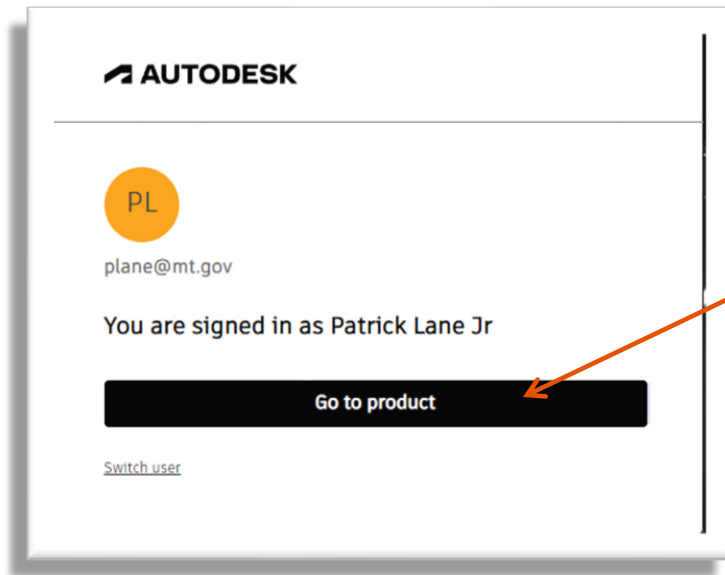
AUTODESK DESKTOP CONNECTOR

WELCOME TO AUTODESK DESKTOP CONNECTOR

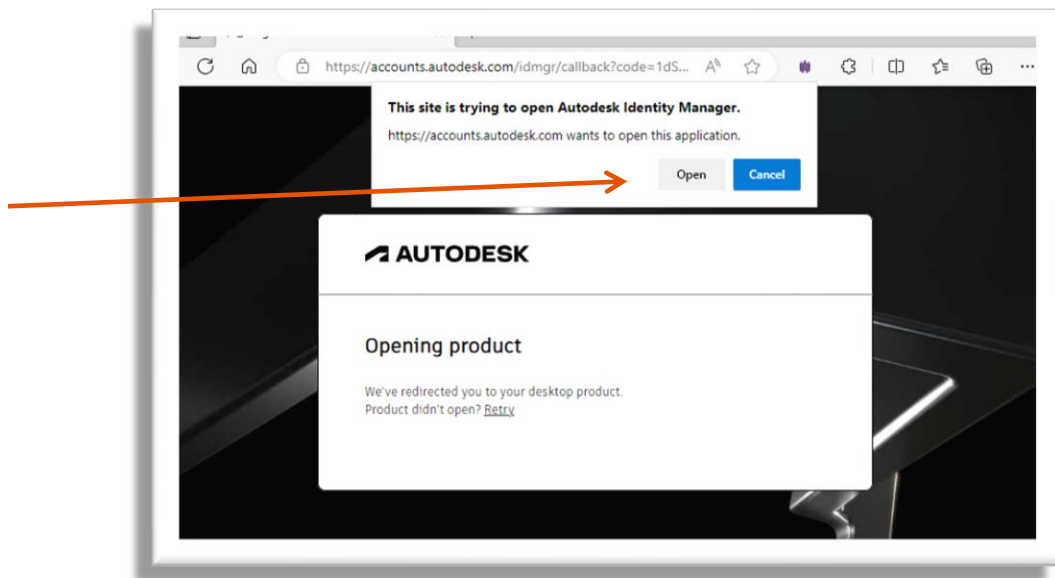
When launching any of the Autodesk applications that have been installed, you will be presented with a splash screen requiring you to log in to the Desktop Connector. The agency has implemented single sign on technology and your mt.gov email address is required to license the product. You will get two splash screens as shown below.



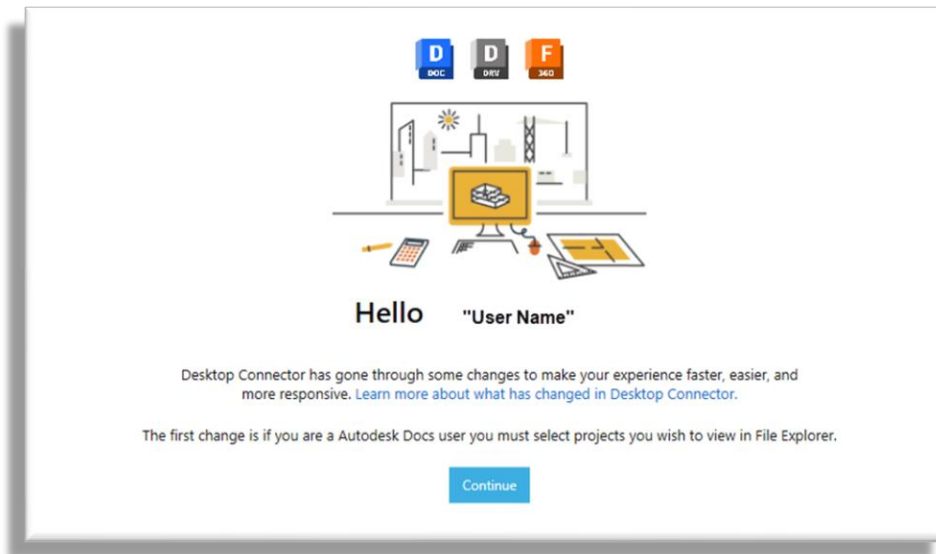
After entering your email address in both you will be presented with this window identifying your account. Select the “Go to product” box.



A web browser will open, and the following splash screen will appear. Select “Open”.

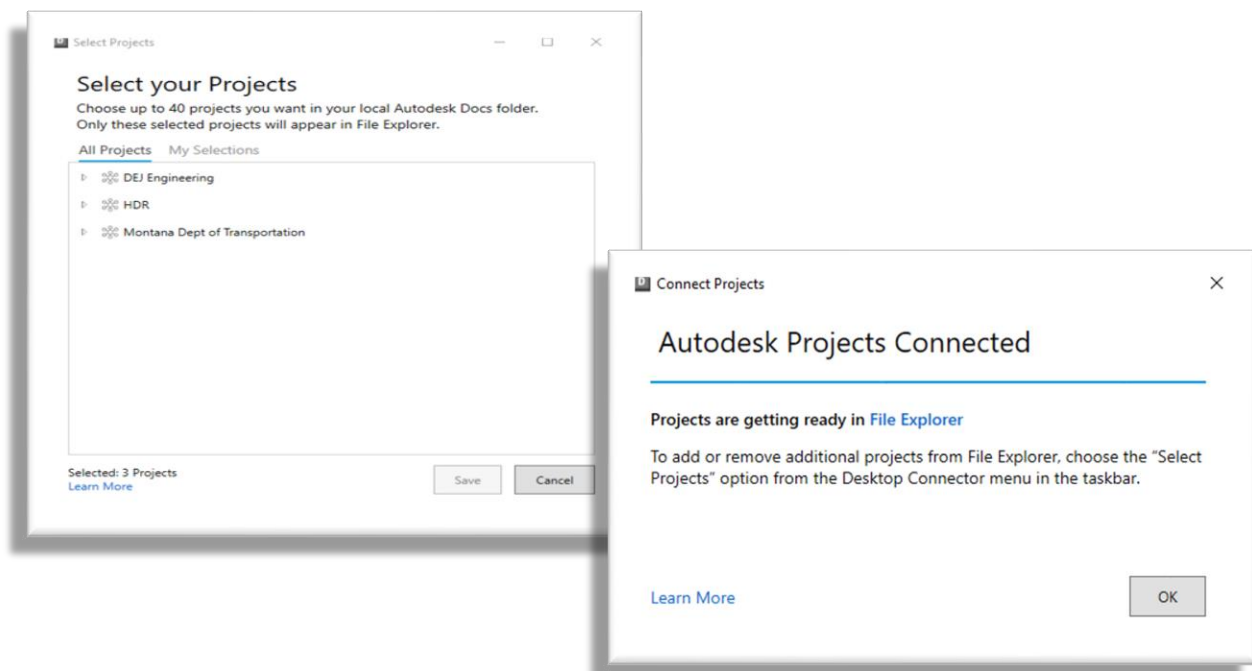


Once you are successfully signed in, the following screen will appear. You can select “Continue”.



SELECTING YOUR DESKTOP CONNECTOR PROJECTS

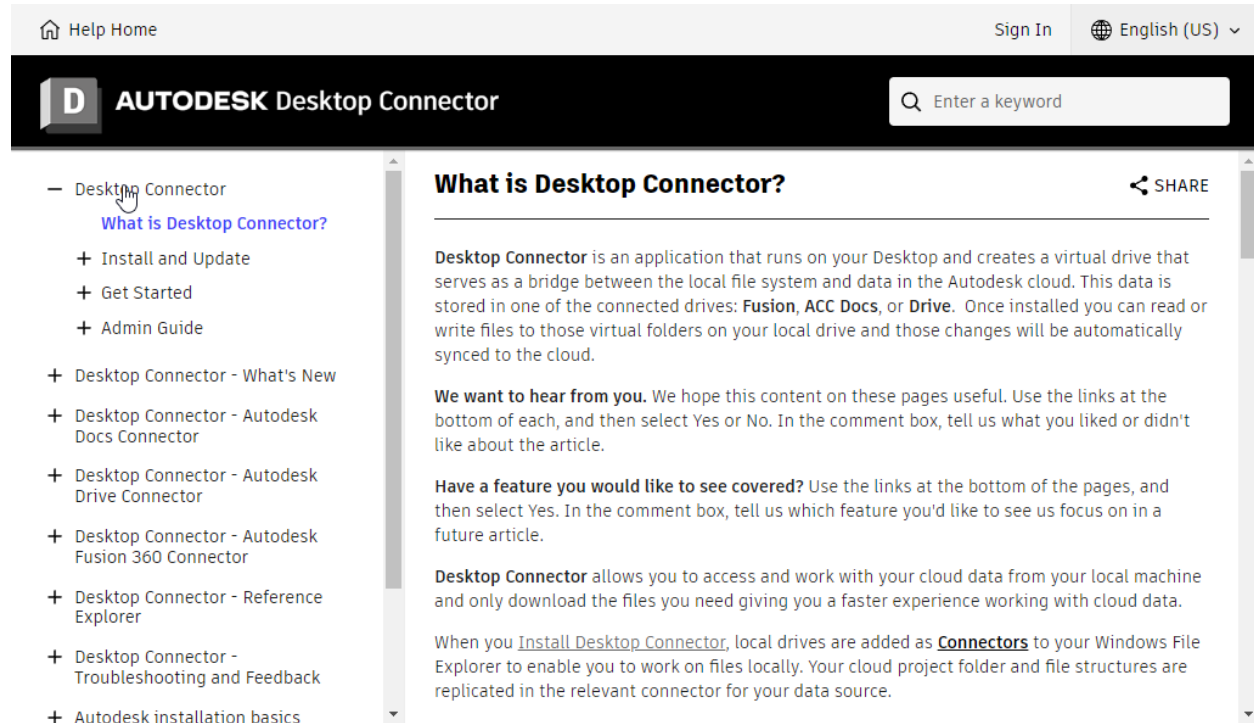
1. When you first Sign into the Desktop Connector, you will be asked to make your initial project selections.
 - a. All the projects you can access are listed in All projects.
 - b. Click a hub to view the relevant projects.
 - c. Select your projects. You can select up to 40 projects.
 - d. After you select your projects select Save and then OK from the Connect Projects box as shown below.



AUTODESK DESKTOP CONNECTOR GUIDE

A complete guide to the Desktop Connector is provided by Autodesk at the link below. This guide will provide you with information regarding what's new in the latest release, the Autodesk BIM 360 / Autodesk Docs cloud data source, information on the Reference Explorer, and other great features of the toolset.

[User Guide | Desktop Connector | Autodesk](#)



The screenshot shows the Autodesk Desktop Connector help page. At the top, there is a navigation bar with 'Help Home', 'Sign In', and 'English (US)'. Below this is a dark header with the 'D' logo and 'AUTODESK Desktop Connector' text, along with a search bar containing 'Enter a keyword'. A left sidebar lists various help topics, with 'Desktop Connector' expanded to show 'What is Desktop Connector?' as the selected item. The main content area displays the article 'What is Desktop Connector?' with a 'SHARE' button. The article text describes the Desktop Connector as an application that creates a virtual drive to bridge local file systems with Autodesk cloud data. It lists supported connectors: Fusion, ACC Docs, and Drive. The text includes sections for user feedback, a feature request section, and a summary of how the connector works with local machines and Windows File Explorer.

Help Home Sign In English (US) ▾

D AUTODESK Desktop Connector

- Desktop Connector
 - What is Desktop Connector?**
 - + Install and Update
 - + Get Started
 - + Admin Guide
- + Desktop Connector - What's New
- + Desktop Connector - Autodesk Docs Connector
- + Desktop Connector - Autodesk Drive Connector
- + Desktop Connector - Autodesk Fusion 360 Connector
- + Desktop Connector - Reference Explorer
- + Desktop Connector - Troubleshooting and Feedback
- + Autodesk installation basics

What is Desktop Connector? SHARE

Desktop Connector is an application that runs on your Desktop and creates a virtual drive that serves as a bridge between the local file system and data in the Autodesk cloud. This data is stored in one of the connected drives: **Fusion**, **ACC Docs**, or **Drive**. Once installed you can read or write files to those virtual folders on your local drive and those changes will be automatically synced to the cloud.

We want to hear from you. We hope this content on these pages useful. Use the links at the bottom of each, and then select Yes or No. In the comment box, tell us what you liked or didn't like about the article.

Have a feature you would like to see covered? Use the links at the bottom of the pages, and then select Yes. In the comment box, tell us which feature you'd like to see us focus on in a future article.

Desktop Connector allows you to access and work with your cloud data from your local machine and only download the files you need giving you a faster experience working with cloud data.

When you [Install Desktop Connector](#), local drives are added as **Connectors** to your Windows File Explorer to enable you to work on files locally. Your cloud project folder and file structures are replicated in the relevant connector for your data source.

AUTODESK DESKTOP CONNECTOR STATUS

To see the status of your Autodesk Desktop Connector, simply click in the Task Bar on “Show hidden Icons” to open the system tray and right-click the “Autodesk Desktop Connector” as shown below.

