



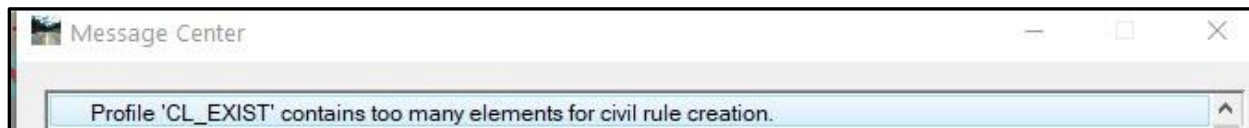
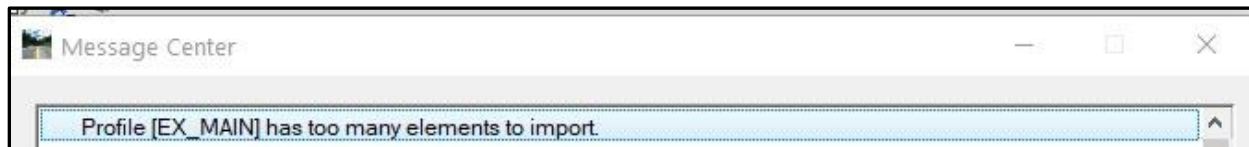
### Application Support Guide

Application/Tool(s): Power GEOPAK V8i SS10  
Version(s): 08.11.09.918  
Environment(s): OpenRoads (Enhanced) Workspace  
Released/Revised: 8/30/2021

# IMPORTING GPK OR ALG HORIZONTAL / VERTICAL ALIGNMENT WITH CIVIL RULES

## ISSUE:

Lengthy horizontal and vertical alignments from ALGs and GPKs will not import or will not become civil ruled features on import. These failures are most common when the user is attempting to import a Geopak/OpenRoads generated existing ground profile or a best fit generated horizontal alignment that contains many small segments (>250) that was stored in a GPK file. Common error messages due to failure of the import process are: "Profile [Profile Name] has too many elements to import", "Profile/Horizontal 'Alignment Name' contains too many elements for civil rule creation", see images of error messages below.



## SOLUTION:

Default workspace configuration settings for the user's current working instance of SS4 OpenRoads can be adjusted to **potentially** resolve the issue. Adjusting these variables does have a limit, so if you continue to receive errors after the fix is performed, you may try breaking your alignment into smaller portions and importing the segmented pieces. It should also be noted that this fix will only be applied to the current running instance of OpenRoads and would need to be reapplied each time you restart the program.

The following 3 workspace configuration settings (SS4 OpenRoads) will assist with the issue of alignment importing and adding civil rules to imported alignments:

1) CIVIL\_RELAX\_NUMBER\_OF\_LINEARs Allows the user to relax the number of adjacent linear elements. If this is set to false or undefined then the maximum number of adjacent lines is 20.

2) CIVIL\_RELAX\_NUMBER\_OF\_ELEMENTS\_FOR\_RULES Allows the user to relax the total number of elements (lines + arcs). If this is set to false or undefined then the maximum number of total elements is 250.

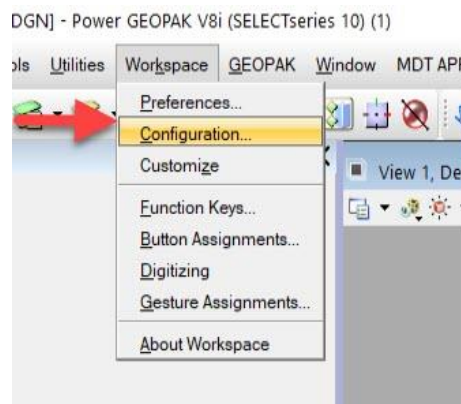
3) CIVIL\_RELAX\_NUMBER\_OF\_ELEMENTS\_ON\_IMPORT Allows the user to relax the total number of elements (lines + arcs) on Import Geometry. If this is set to false or undefined then the maximum number of total elements is 1000. This only applies to vertical alignments.

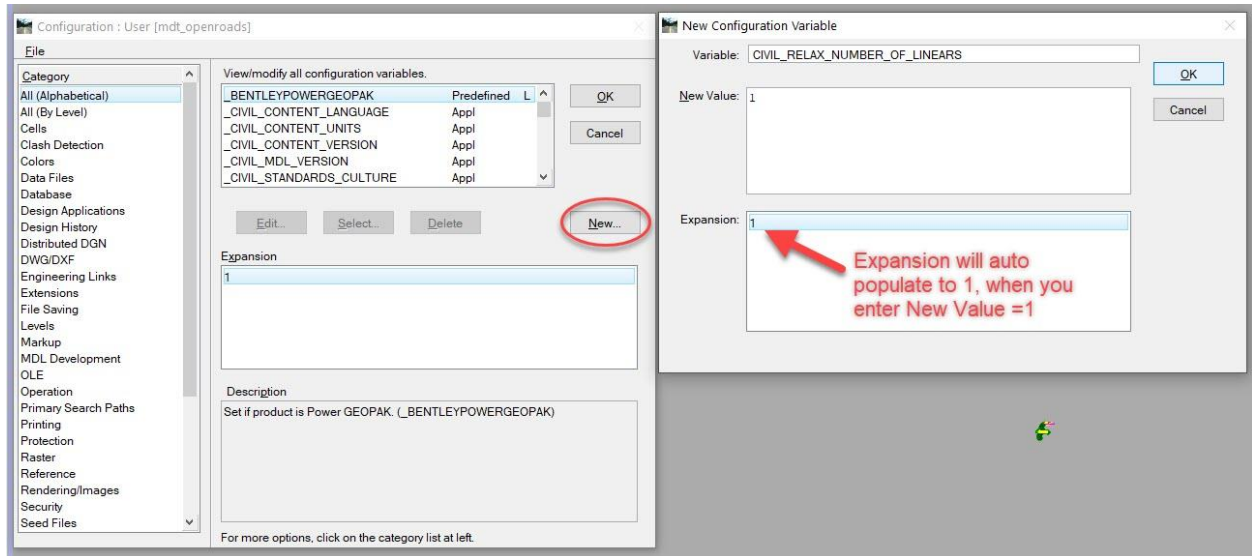
The following configuration variables will need to be changed to a new value of 1 prior to attempting import:

CIVIL\_RELAX\_NUMBER\_OF\_LINEARs  
CIVIL\_RELAX\_NUMBER\_OF\_ELEMENTS\_FOR\_RULES  
CIVIL\_RELAX\_NUMBER\_OF\_ELEMENTS\_ON\_IMPORT

## PROCEDURE:

- 1) In the file you will be performing the alignment import, open Workspace/Configuration, and select New...
- 2) One at a time Copy and paste each of the three Variables listed above, entering a New Value = 1 as shown below. Select OK after entering each of the Variables.





3) Close the Configuration dialog. Note, it is not necessary to save changes to the UCF file.

### SUPPORT CONTACT:

Please [Open a Case](#) with the MDT Service Desk for assistance. This is also accessible from the [Engineering Apps & Resources](#) web page.