

MDT CADD Update Notification

Subject: ADA Detail Sheet Truncated Dome Pattern Update

Date: 8/30/2020

Software/Version(s): MicroStation V8i SS10 / 08.11.09.916;
Power GEOPAK V8i SS10 / 08.11.09.918

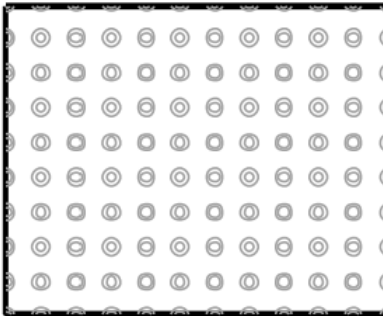
Workspace(s): OpenRoads (Enhanced) Workspace

Impacts: Signed/Sealed Plans for Contract

Update Reference Number(s): CU-10358, CU-10359

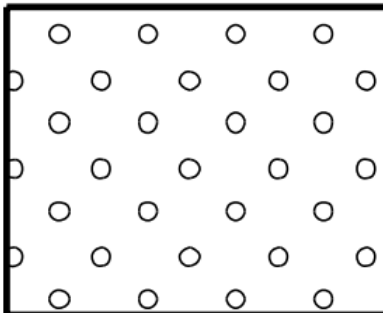
Update

The CEL_RDDET_ADA cell has been updated to replace the existing pattern for ADA truncated dome panels, which does not reflect any of MDT's current circular patterns.



DETECTABLE WARNING DEVICES

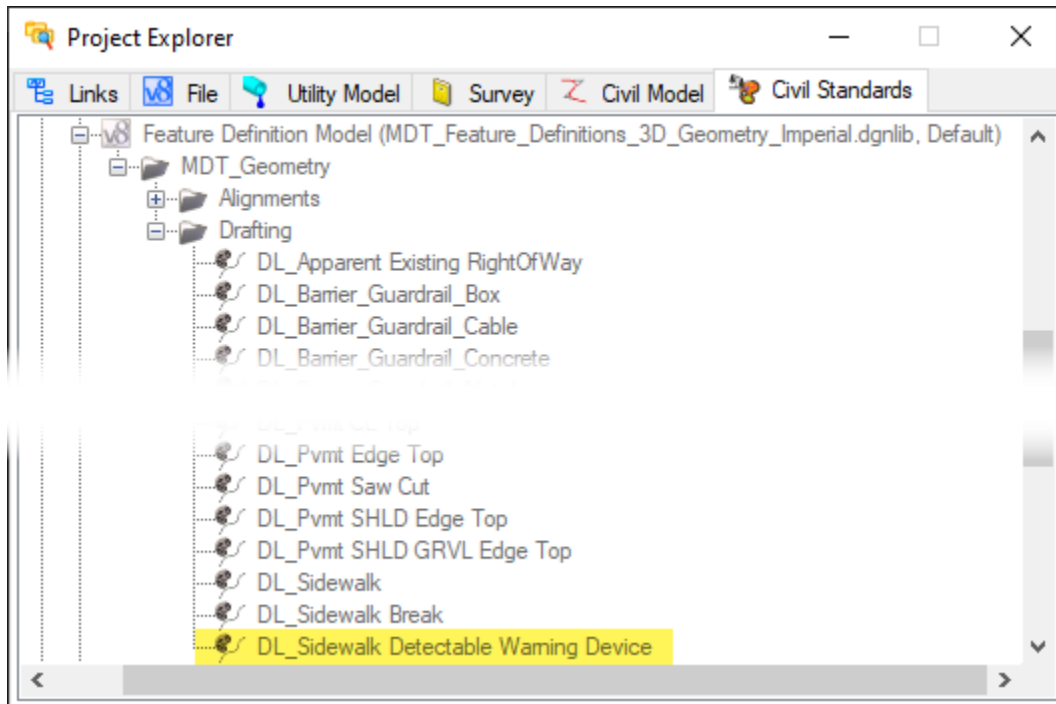
The CEL_RDDET_ADA cell has been updated so the pattern for the ADA truncated dome panels reflects MDT's CIR3 cell pattern.



DETECTABLE WARNING DEVICES

For future ADA detail design, please utilize the CIR3 pattern to hatch the proposed truncated dome areas. This will match the updated ADA detail sheet.

In addition, a new feature definition has been added to the library. When laying out truncated dome panel areas, the DL_Sidewalk Detectable Warning Device feature definition is available.



Please submit an [MDT Engineering Systems Support Request](#) for assistance with this update.