

SYSTEM DESIGNATIONS

- NHS Interstate
- NHS Non-Interstate
- Primary
- Secondary
- Urban
- State Maintained
- Off System
- Alley

ROUTE SURFACE TYPE

- Paved
- Gravel
- Unsurfaced

ROUTE SIGNING

- Interstate Highway
- U.S. Highway
- Montana Route
- Route

BOUNDARIES

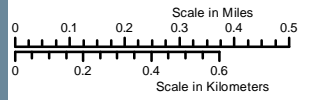
- County Line
- City Boundary
- National Park Service
- Reservation
- National Forest Service
- State Park
- US Fish Wildlife Service

OTHER SYMBOLS

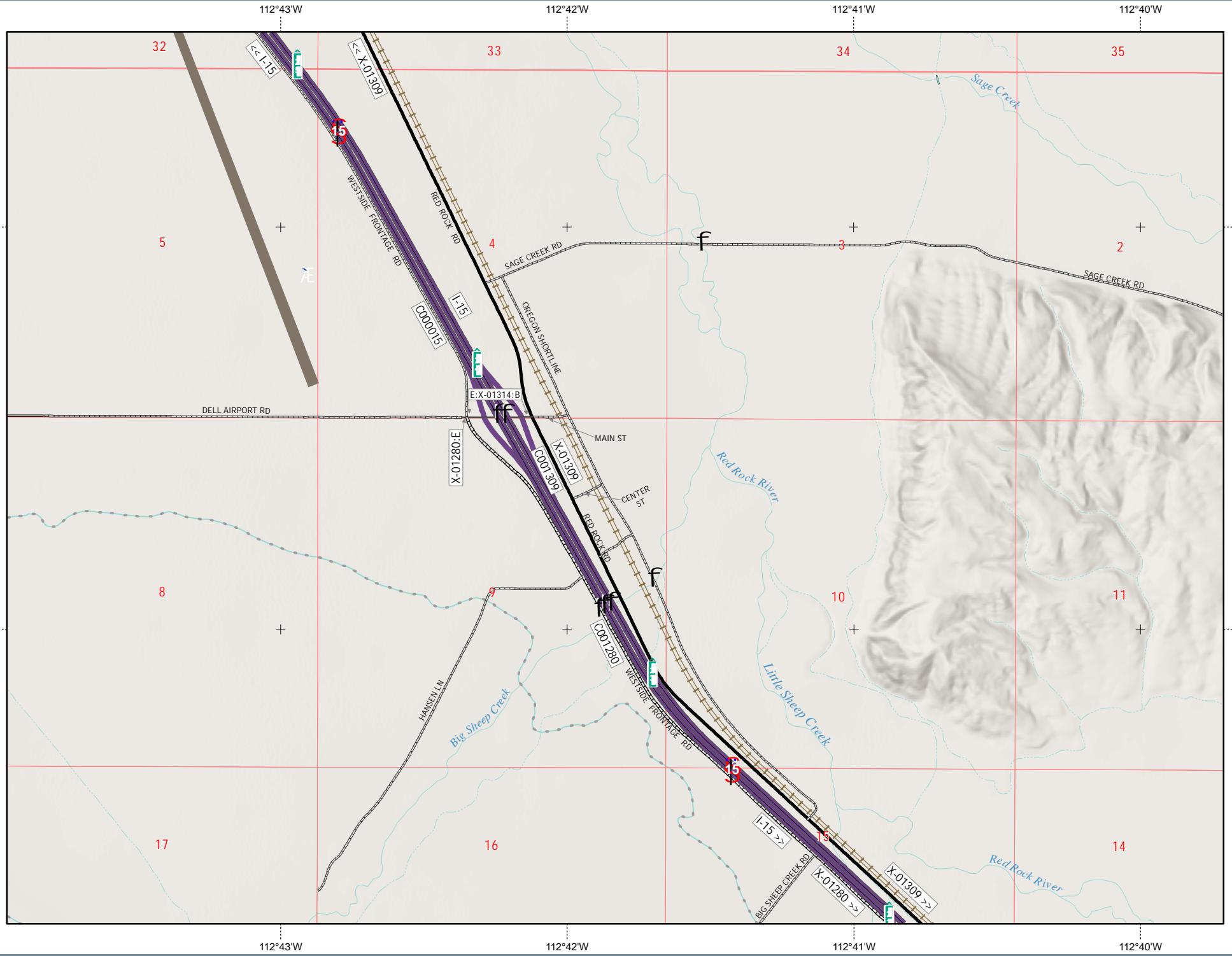
- Stream
- Water
- Railroad
- Bridge
- Rest Area: Year-Round/Seasonal
- Canal or Ditch
- Reference Marker
- Public Airport
- Parking Area



PREPARED BY THE
STATE OF MONTANA
DEPARTMENT OF TRANSPORTATION
GEOSPATIAL INFORMATION SECTION



NAD 1983 State Plane Montana FIPS 2500
Lambert Conformal Conic



44°44'N
44°43'N