




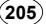
SYSTEM DESIGNATIONS

- |                |                    |
|----------------|--------------------|
| NHS Interstate | NHS Non-Interstate |
| Primary        | Secondary          |
| Urban          | State Maintained   |
| Off System     | Alley              |

ROUTE SURFACE TYPE

- |       |         |
|-------|---------|
| Paved | Unpaved |
|-------|---------|

ROUTE SIGNING

- |  |  |
|--|--|
|  Interstate Highway |  U.S. Highway |
|  Montana Route      |  Route        |

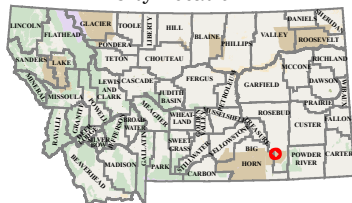
BOUNDARIES

- |                          |
|--------------------------|
| County Line              |
| City Boundary            |
| National Park Service    |
| Reservation              |
| National Forest Service  |
| State Park               |
| US Fish Wildlife Service |

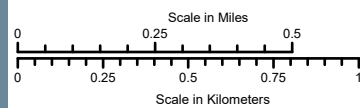
OTHER SYMBOLS

- |                                |                  |
|--------------------------------|------------------|
| Stream                         | Canal or Ditch   |
| Water                          | Reference Marker |
| Railroad                       | Public Airport   |
| Bridge                         | Parking Area     |
| Rest Area: Year-Round/Seasonal |                  |

City Location



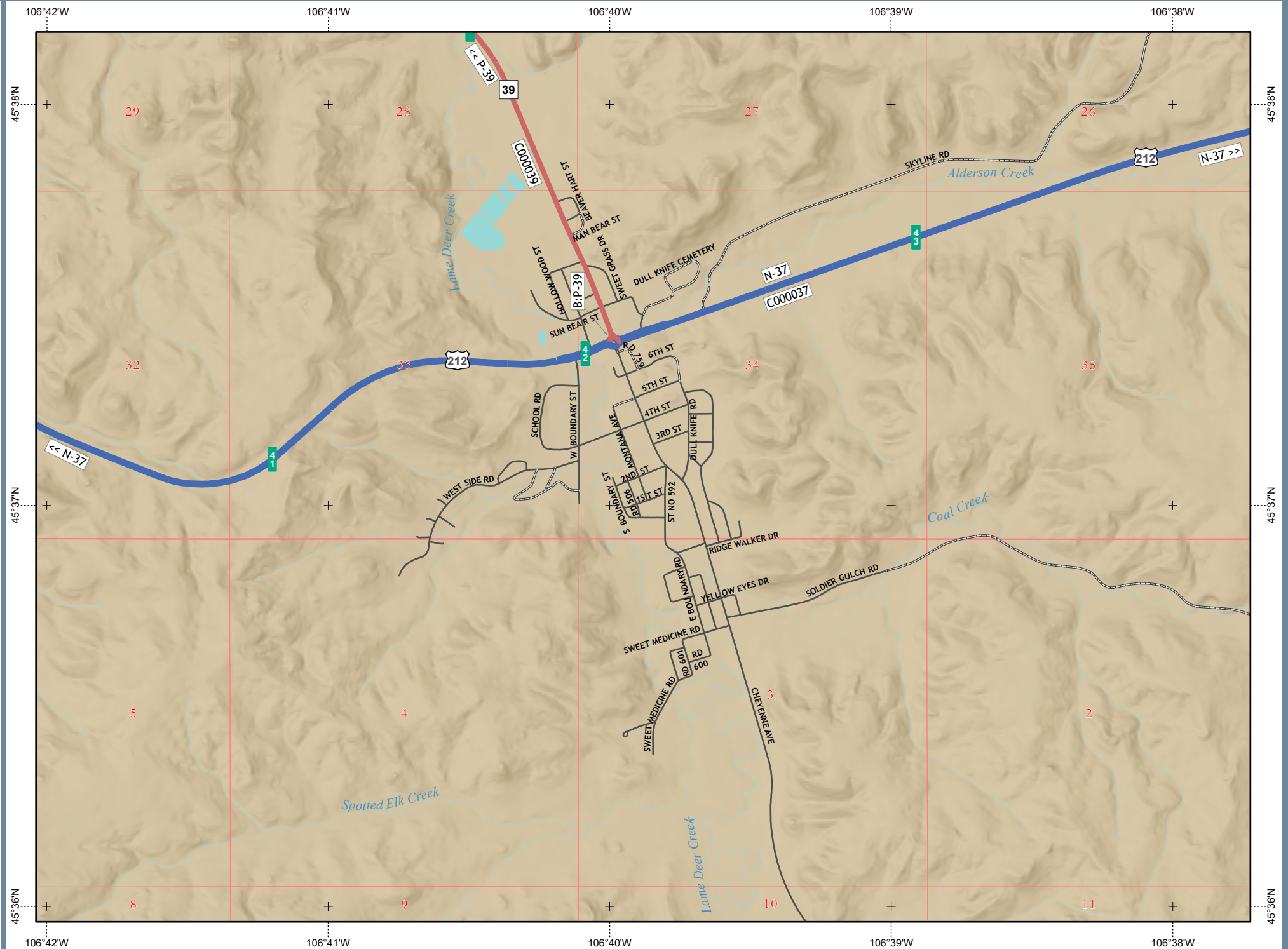
PREPARED BY THE  
STATE OF MONTANA  
DEPARTMENT OF TRANSPORTATION  
GEOSPATIAL INFORMATION SECTION



NAD 1983 State Plane Montana FIPS 2500  
Lambert Conformal Conic



COPYRIGHT© 2024 MONTANA DEPARTMENT OF TRANSPORTATION



LAME  
DEER

UNINC

203