

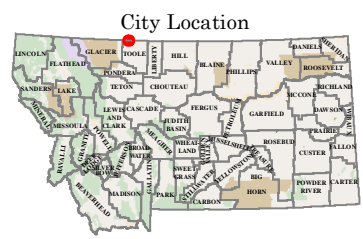
- SYSTEM DESIGNATIONS**
- NHS Interstate
 - NHS Non-Interstate
 - Primary
 - Secondary
 - Urban
 - State Maintained
 - Off System
 - Alley

- ROUTE SURFACE TYPE**
- Paved
 - Gravel
 - Unsurfaced

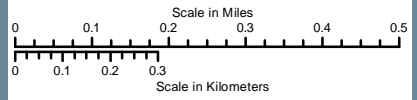
- ROUTE SIGNING**
- Interstate Highway
 - U.S. Highway
 - Montana Route
 - Route

- BOUNDARIES**
- County Line
 - City Boundary
 - National Park Service
 - Reservation
 - National Forest Service
 - State Park
 - US Fish Wildlife Service

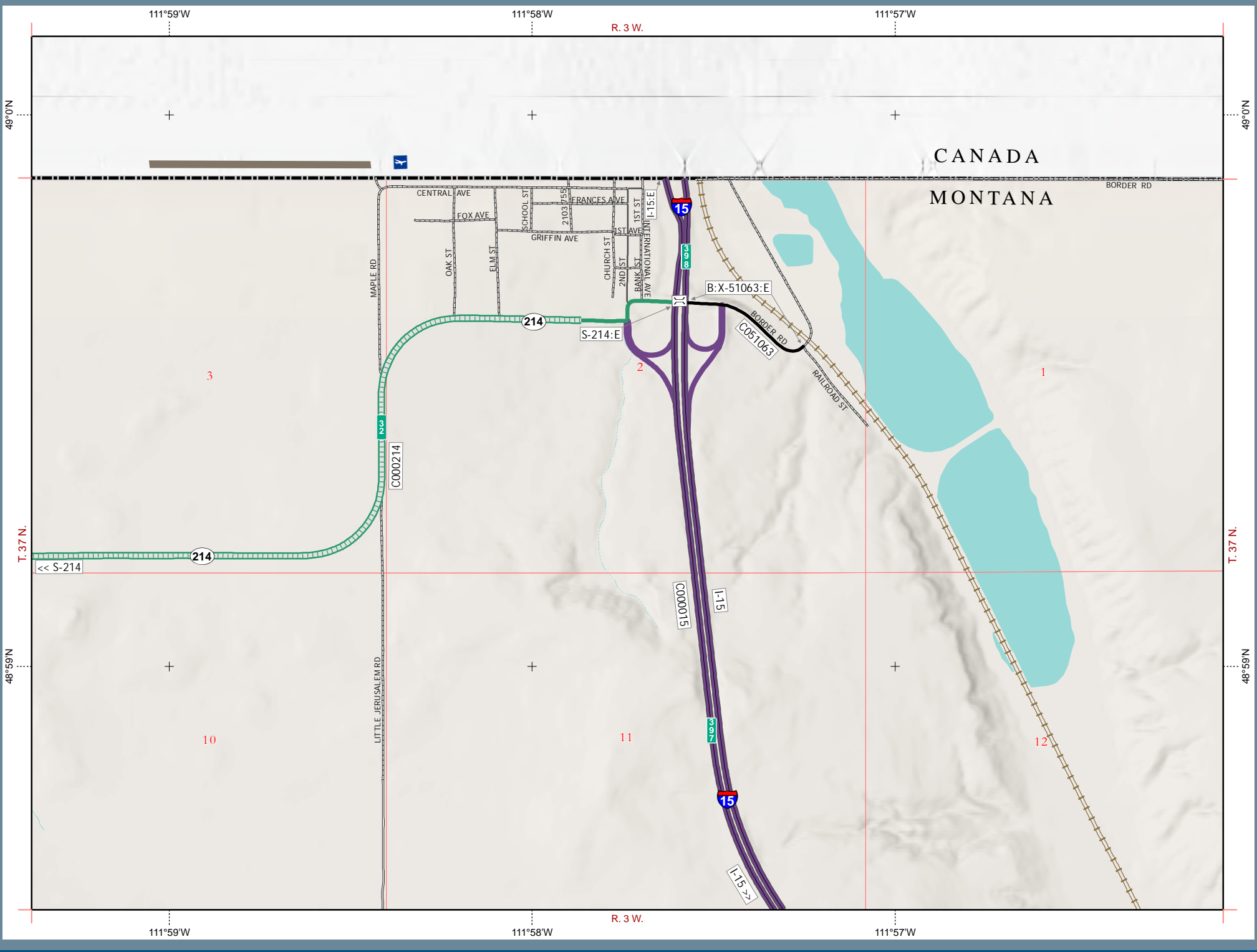
- OTHER SYMBOLS**
- Stream
 - Canal or Ditch
 - Water
 - Reference Marker
 - Railroad
 - Public Airport
 - Bridge
 - Parking Area
 - Rest Area: Year-Round/Seasonal



PREPARED BY THE
STATE OF MONTANA
DEPARTMENT OF TRANSPORTATION
GEOSPATIAL INFORMATION SECTION



NAD 1983 State Plane Montana FIPS 2500
Lambert Conformal Conic



111°59'W 111°58'W 111°57'W
49°0'N 48°59'N

111°59'W 111°58'W 111°57'W
49°0'N 48°59'N