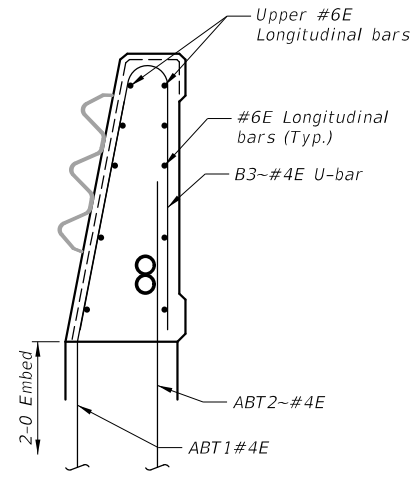
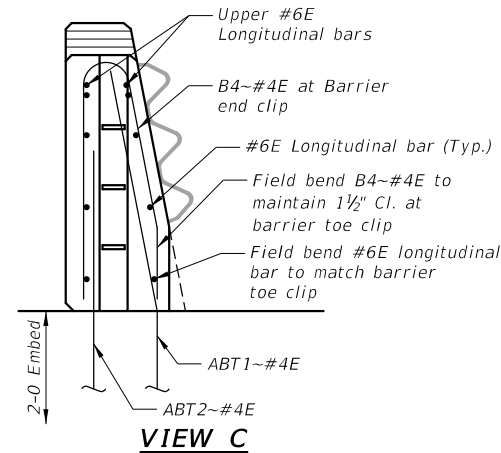


SECTION A



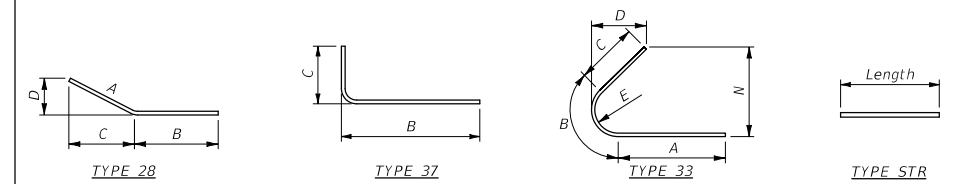
SECTION B



VIEW C

BILL OF REINFORCING STEEL

(ALL DIMENSIONS ARE OUT TO OUT)



NOTE: See Bridge Plans for number of bars required and longitudinal bars.

Mark	Size	Type	Length	A	B	C	D	E	G	N
B1	#4E	28	5-0	3-0	2-0	6 3/4"	2-11 1/4"			
B2	#4E	37	2-11 1/4"		10"	2-1 1/4"				
B3	#4E	33	5-9 1/4"	2-6 1/2"	7 1/4"	2-7 1/2"	2-9"	2"		11"
B4	#4E	33	5-5 3/4"	2-4 1/4"	8 1/2"	2-5 1/4"	2-7"	2 1/4"		11 1/4"
ABT1	#4E	28	4-6 1/2"	2-6 1/2"	2-0	2-6"	5 3/4"			
ABT2	#4E	STR	3-8							

NOTES

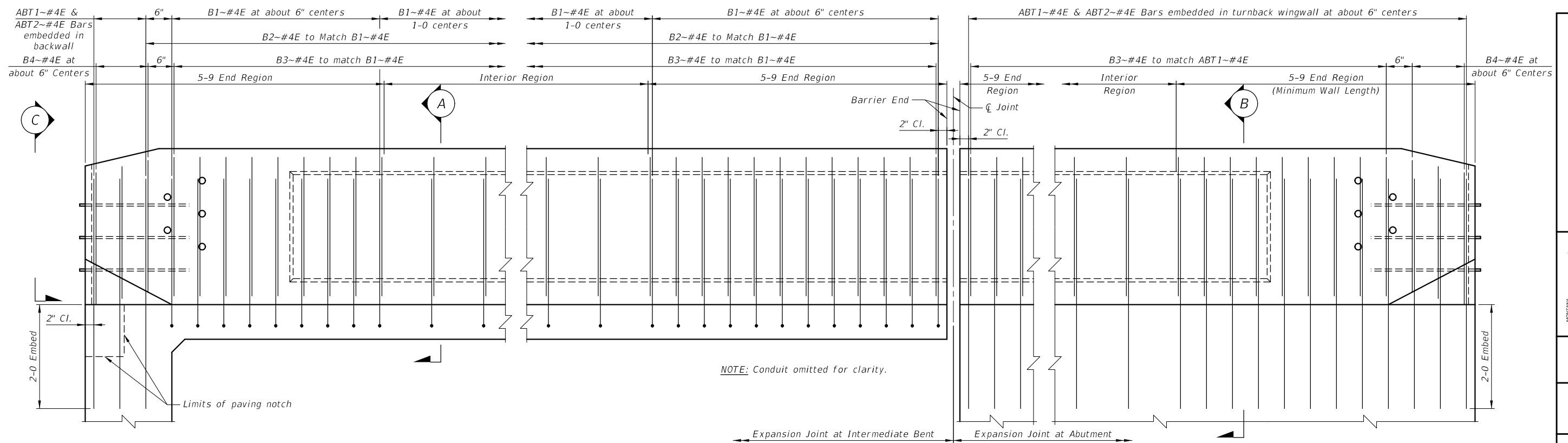
REINFORCING STEEL: All barrier reinforcing steel is epoxy coated.

DETAILS: See Std. Dwg. No SBR-SS36 for barrier details not shown on this drawing.

PAYMENT: Include all costs associated with furnishing and placing reinforcing steel in the barrier in the unit price bid for Reinforcing Steel - Epoxy Coated.

EXCEPTIONS: Use details shown on this drawing only as they apply to the project. Anchorage details may vary. Refer to other drawings for variations in these details.

UPPER LONGITUDINAL BARS: Adjust the lap length by approximately 10 1/2" at the tapered ends of the barrier.

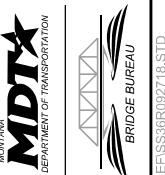


SEMI-INTEGRAL ABUTMENT

ABUTMENT OR INTERMEDIATE BENT WITH EXPANSION JOINT

TURNBACK WINGWALL

STANDARD BRIDGE RAIL TYPE SINGLE SLOPE 36" REINFORCING



REVISED	9-27-18	J.S.O.
REVISED	6-28-18	T.W.S.
REVISED	5-8-18	T.J.B.
APPROVED		
CHECKED		
DRAWN		

DRAWING NO. SBR-SS36R

No Scale