

NOTES

Locate the longitudinal and transverse C of the load frame directly above the C of the static load test pile.

The Load Cell, Hemispherical Bearing, Jack, Base Plate, Dial indicators and their support system, and Timber Blocks furnished by the contractor. Include all costs associated with furnishing and installing these items in the unit price bid for Static Load Test.

Estimated weight of Static Load Test Frame for handling:
Full Assembly = 7.5 Tons
Girder Only = 6.0 Tons

Details shown for steel pipe piles. The details for H-Piles are similar except as noted.

Handle Static Load Test Frame by crane only.

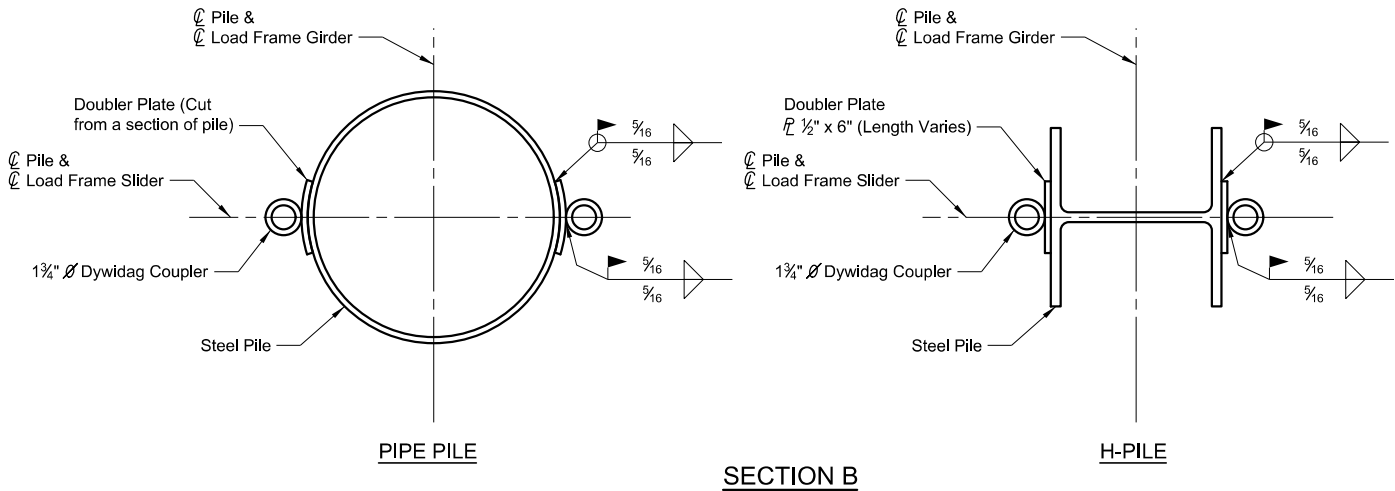
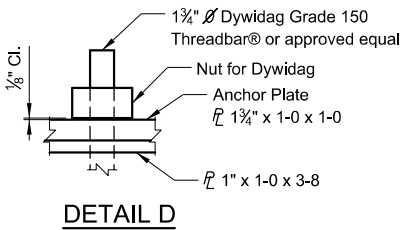
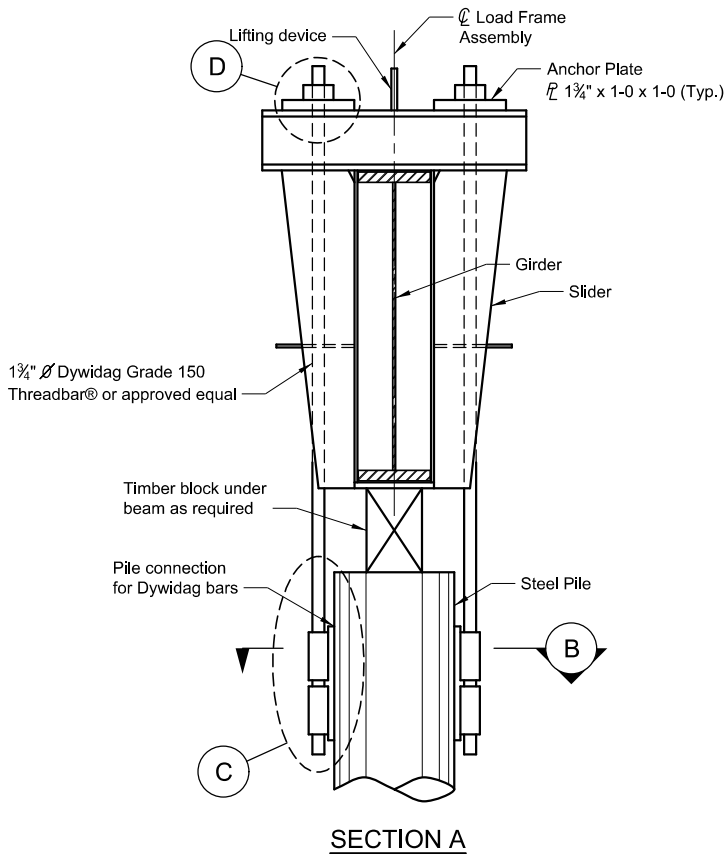
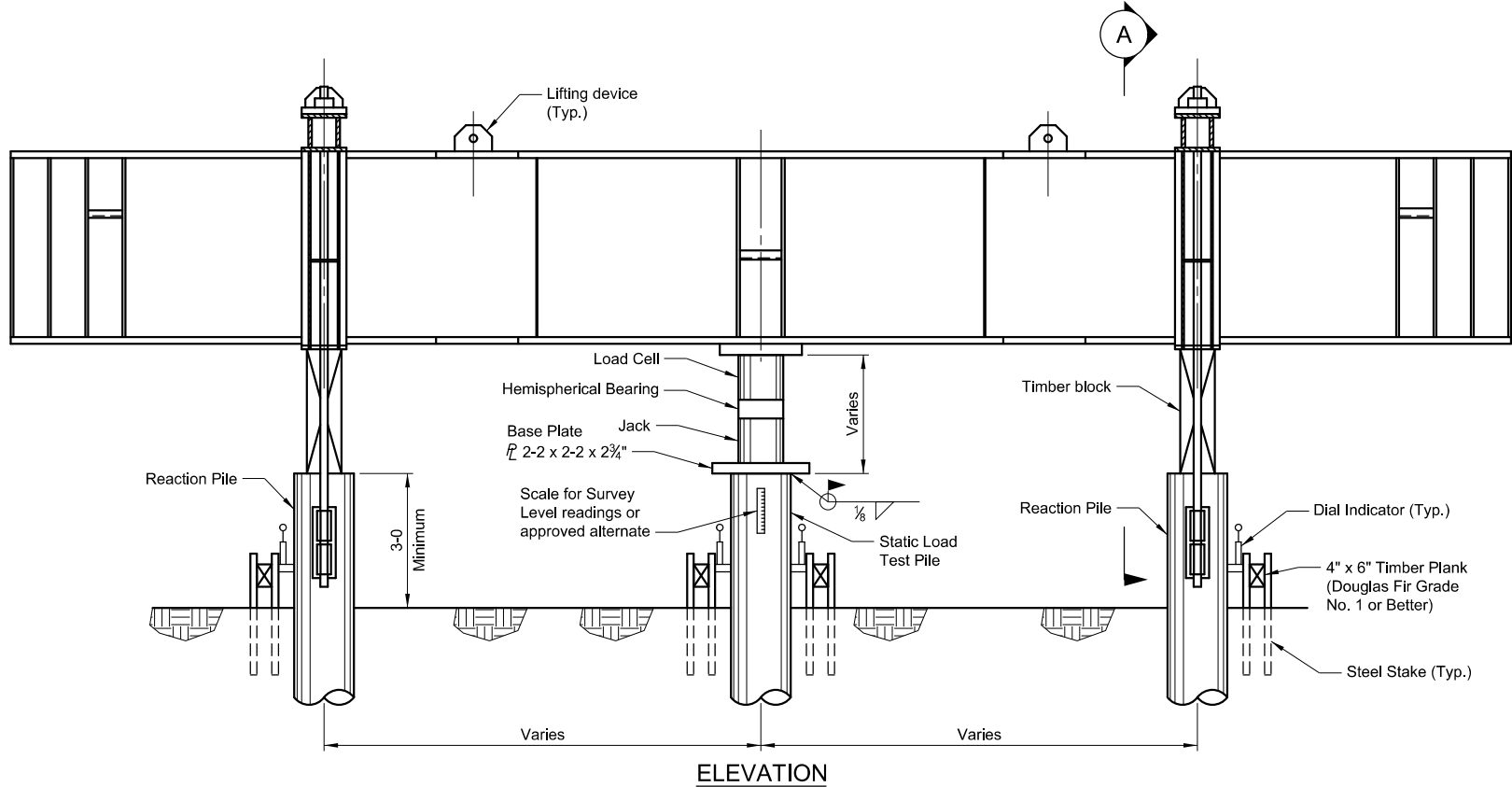
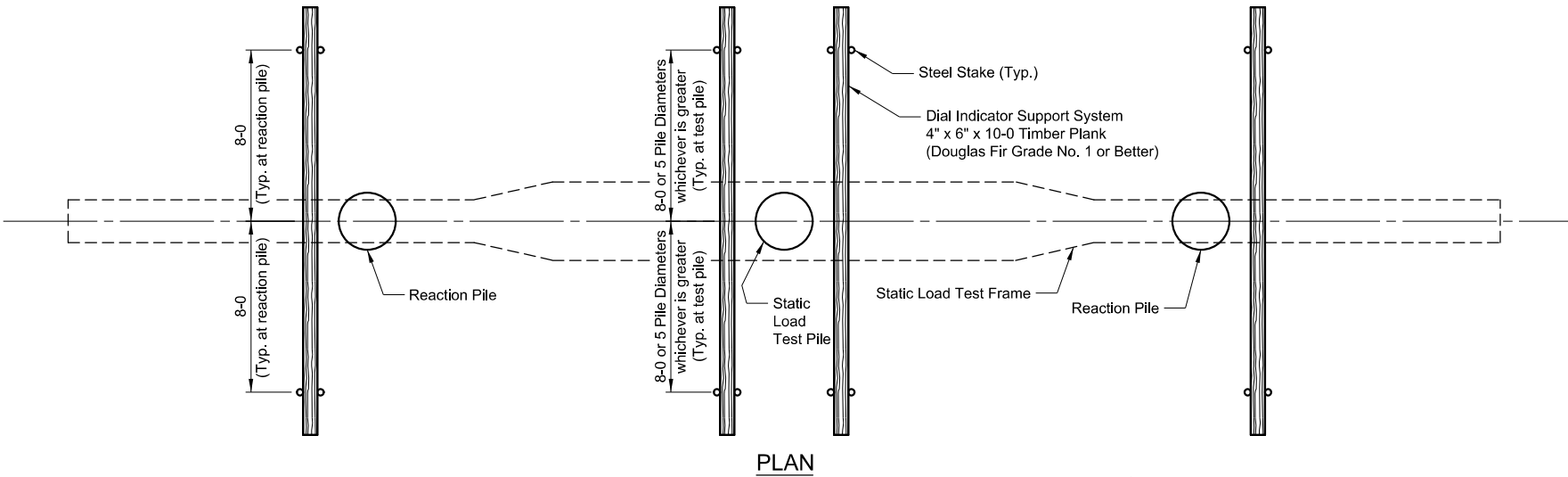
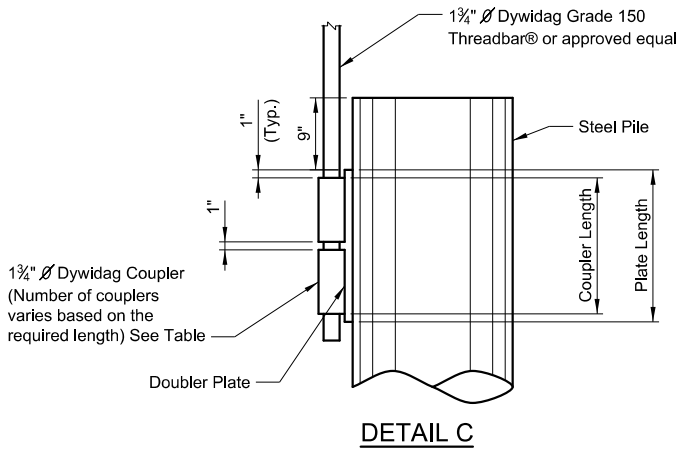


TABLE OF COUPLER LENGTH	
LOAD	MINIMUM REQUIRED COUPLER LENGTH
450	12"
550	15"
650	18"
750	21"



STANDARD STATIC LOAD TEST FRAME FIELD SETUP DETAILS

MDTA

MONTANA DEPARTMENT OF TRANSPORTATION

BRIDGE BUREAU

REVISED	REVISED	REVISED	REVISED	APPROVED	CHECKED	DRAWN
		3-5-14	3-7-13	3-6-13	3-4-13	
		T.J.B.	D.F.J.	C.W.H.	T.J.B.	

DRAWING NO. SLTF

\$DATES\$

\$TIMES\$

\$FILEABBREV\$

No Scale