

Montana Department of Transportation Bridge Bureau Approved Construction Equipment List

Make:	Komatsu
Model:	WA380-3
Equipment Type:	Wheel Loader
Contractor Modifications:	none

Interstate Approval Conditions

<i>Approval Type</i>	crossing only
<i>Speed:</i>	no restriction
<i>Weight:</i>	35,903 lb or less
<i>Traffic:</i>	approved with regular traffic
<i>Location Restrictions:</i>	remain in painted lane

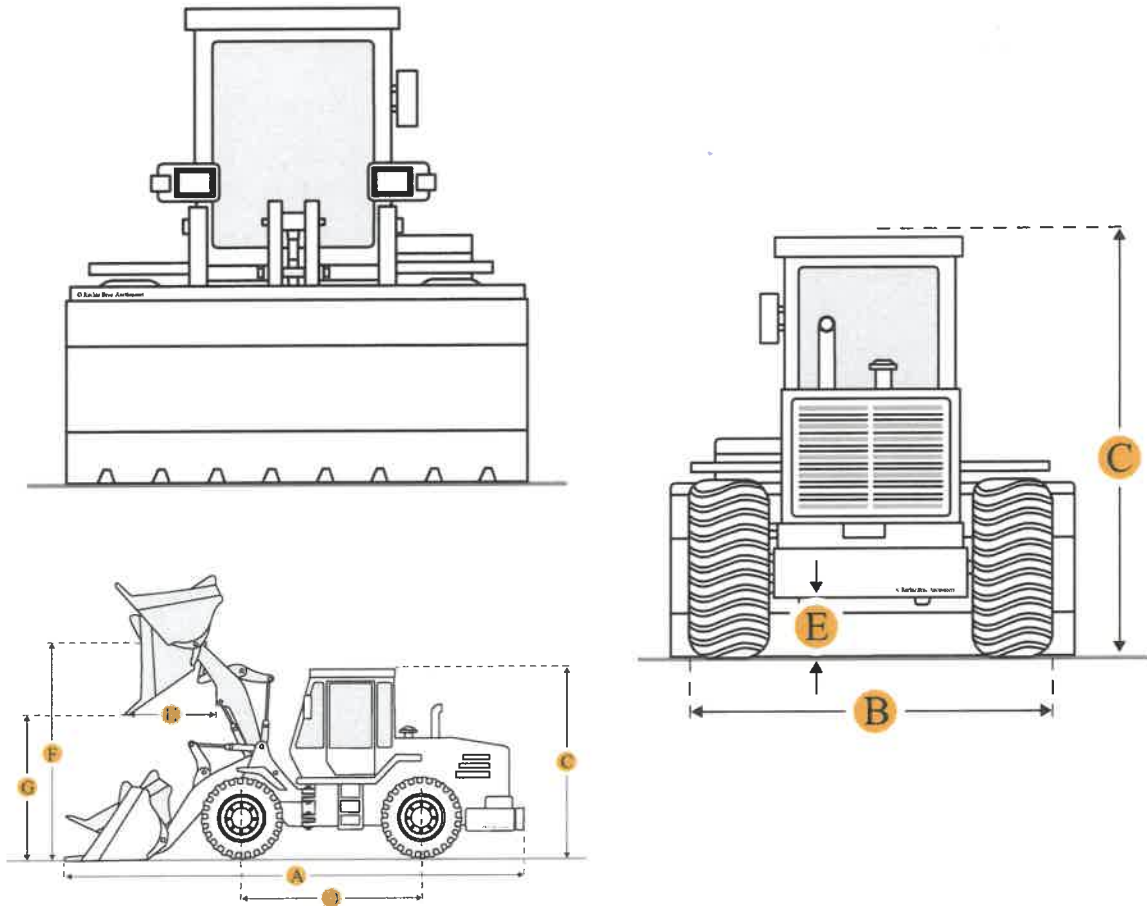
Non-Interstate Approval Conditions

<i>Approval Type</i>	crossing only
<i>Speed:</i>	no restriction
<i>Weight:</i>	35,903 lb or less
<i>Traffic:</i>	approved with regular traffic
<i>Location Restrictions:</i>	remain in painted lane

Comments:

Equipment configuration, weights, and specifications on following pages. Approval does not apply to posted bridges. Other construction equipment is not allowed to operate on or cross bridge at the same time this equipment is on the bridge. Equipment must be empty while crossing.

Komatsu WA380-3 Wheel Loader



Units Imperial Metric

Dimensions

Bucket

G	Dump Clearance At Max Raise	9.6 ft in
	Bucket Capacity - Heaped	4.19 yd3
	Bucket Capacity - Struck	3.54 yd3
	Bucket Width	9.54 ft in
	Breakout Force	33300 lb

Dimensions

E	Ground Clearance	1.28 ft in
A	Length With Bucket On Ground	26.14 ft in
B	Width Over Tires	8.85 ft in
C	Height To Top Of Cab	10.88 ft in
D	Wheelbase	10.5 ft in
F	Hinge Pin - Max Height	13.23 ft in
H	Reach At Max Lift And Dump	3.84 ft in

Specifications

Engine

Engine Make	2238
Engine Model	S6D108
Gross Power	187.8 hp
Displacement	436.4 cu in

Operational

Operating Weight	35902.3 lb
Fuel Capacity	75.9 gal
Static Tipping Weight	27513.7 lb
Turning Radius	21.1 ft in
Tire Size	20.5-25-16PR

Transmission

Number Of Forward Gears	4
Number Of Reverse Gears	4
Max Speed - Forward	19.6 mph
Max Speed - Reverse	20.2 mph
