

MULTIPLE ARCH CULVERTS

(METAL CULVERTS SHOWN)

X: VARIABLE. FOR METAL CULV. SEE DTL. DWG. 603-32 (CIRCULAR) OR 603-34 (ARCH), AND FOR CONCRETE CULV. WITH FETS SEE DTL. DWG. 603-08 (ROUND) OR 603-10 (ARCH), AND FOR CONCRETE CULV. WITH SQUARE ENDS, THE "X" DIMENSIONS IS D/4 OR R/3

H: 3'-0" [900] MIN. OR 1'-0" [300] BELOW BOTTOM OF FOUNDATION MATERIAL IF SPECIFIED.

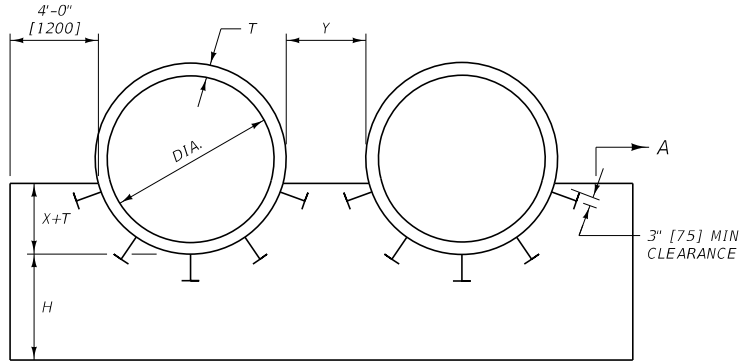
T: CULVERT WALL THICKNESS FOR CONCRETE OR CORRUGATION DEPTH FOR METAL.

Y: FOR METAL CULV. AND CULV. WITHOUT FETS: Y = 4'-0" [1200] (OUTSIDE WALL TO OUTSIDE WALL)

S: INSIDE PIPE SPAN

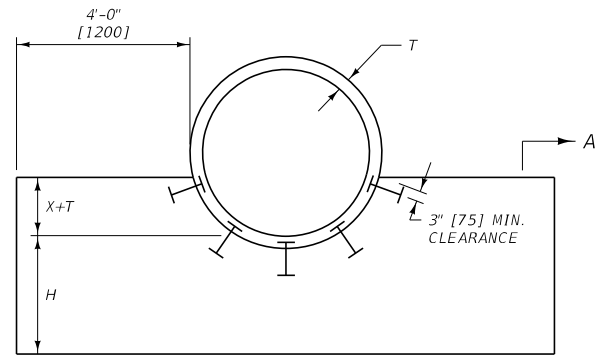
FOR CONCRETE CULV. WITH FETS: USE Y AS REQUIRED FOR PARALLEL PIPE INSTALLATION, PER DTL. DWG. NO. 613-08

NOTE: Y MAY BE INCREASED ON LARGE DIAMETER PIPES (UP TO A MAX. OF 8'-0" [2400]) TO AID IN INSTALLATION AND BACKFILL. THE QUANTITIES SHOWN IN 552-04, 06 & 08 WERE FIGURED USING Y = 4'-0" [1200]. ADJUST QUANTITIES AS NEEDED WHEN Y IS OTHER THAN 4'-0" [1200].



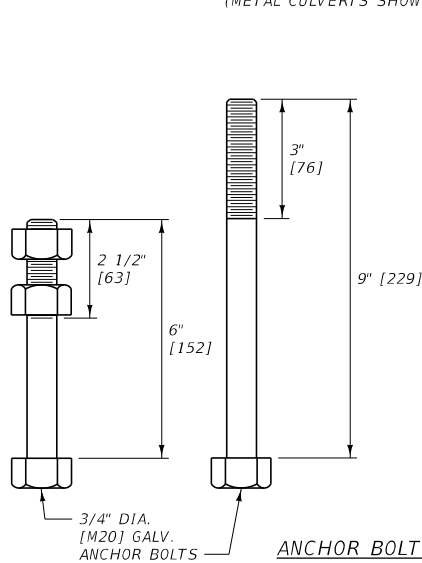
MULTIPLE ROUND CULVERTS

(METAL CULVERTS SHOWN)



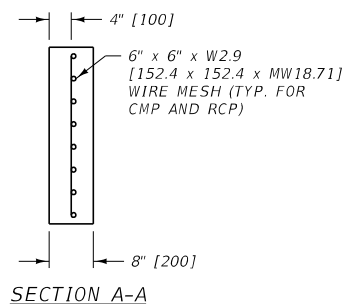
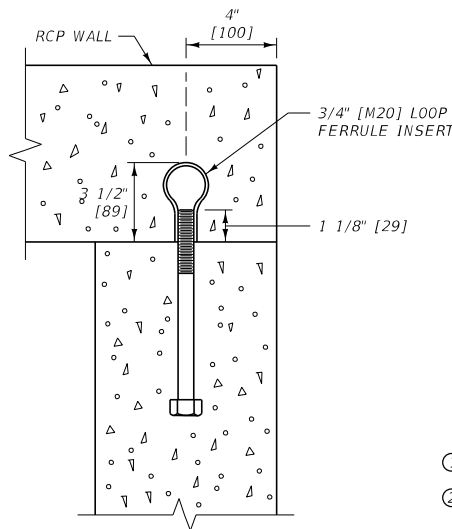
SINGLE ROUND CULVERT

(CONCRETE CULVERT SHOWN)



ANCHOR BOLT DETAILS

6" [152] LONG FOR METAL PIPE
9" [229] LONG FOR CONCRETE PIPE



SECTION A-A

NOTES:

- ① USE CLASS GENERAL CONCRETE OR EQUAL.
- ② SEE DTL. DWG. NO. 603-18 AND 603-19 FOR BEDDING UNDER CULVERTS.

ANCHOR BOLT SPACING:
MIN. OF FIVE 3/4" DIA. [M20] GALV. ANCHOR BOLTS
IN WALL. USE MAX. SPACING OF 1.5' [455].

REINFORCING STEEL:
USE REBAR DOWELS MEETING THE REQUIREMENTS OF
AASHTO M 31 GRADE 60 (GRADE 420).

EPOXY RESIN BONDING ADHESIVE:
MEET THE REQUIREMENTS OF AASHTO M 235 TYPE 4.

UNITS SHOWN IN BRACKETS [] ARE
METRIC AND ARE IN MILLIMETERS (mm)
UNLESS OTHER UNITS ARE SHOWN.

DETAILED DRAWING	
REFERENCE	DWG. NO.
STANDARD SPEC.	552-00
SECTION 552.603.613	

**CONCRETE CUTOFF WALLS
FOR CULVERTS**

