

# DWG TRUEVIEW PLOTTING

## Contents

<b>CONTENTS .....</b>	<b>1</b>
<b>OVERVIEW.....</b>	<b>2</b>
Process Provenance.....	2
<b>STATEMENT OF NEED .....</b>	<b>2</b>
<b>ACRONYMS/DEFINITIONS USED IN THIS DOCUMENT .....</b>	<b>2</b>
<b>PROCESS DESCRIPTION AND EXAMPLES .....</b>	<b>3</b>
Section I.    Create *.dsd in Civil 3D .....	3
Procedure – Create drawing set description (*.dsd) from Civil 3D sheet set (*.dst)	3
Section II.   DWG TrueView Plotting .....	5
Procedure – Publish sheet set using DWG TrueView .....	5

## Overview

This document contains the workflow to plot plan sets using DWG TrueView.

### Process Provenance

- Date of development: 5/28/2025
- Revision date: *N/A*
- Application/Tool(s): *Autodesk DWG TrueView*
- Version(s): *DWG TrueView U.202.0.0*
- Environment(s): *N/A*
- Author: [MDT EngOps Workflow Steering Committee](#)

## Statement of Need

Plotting from DWG TrueView is usually the fastest method of plotting Civil 3D files. This is especially true for sheet sets that contain sheets from multiple DWGs. DWG TrueView will only open files as read-only. Civil 3D opens files for edit and can run processes to update corridors, Civil 3D object data shortcuts, and XREFs that take time.

## Acronyms/Definitions Used in This Document

DSD – Drawing Set description

DST – Sheet Set

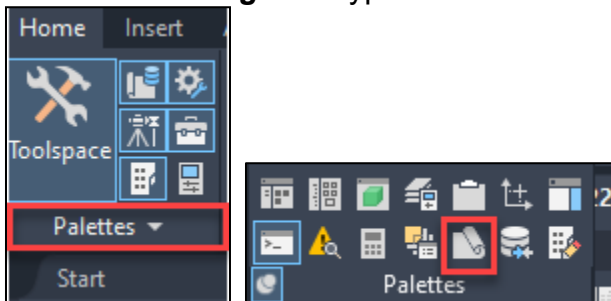
SSM – Sheet Set Manager

# Process Description and Examples

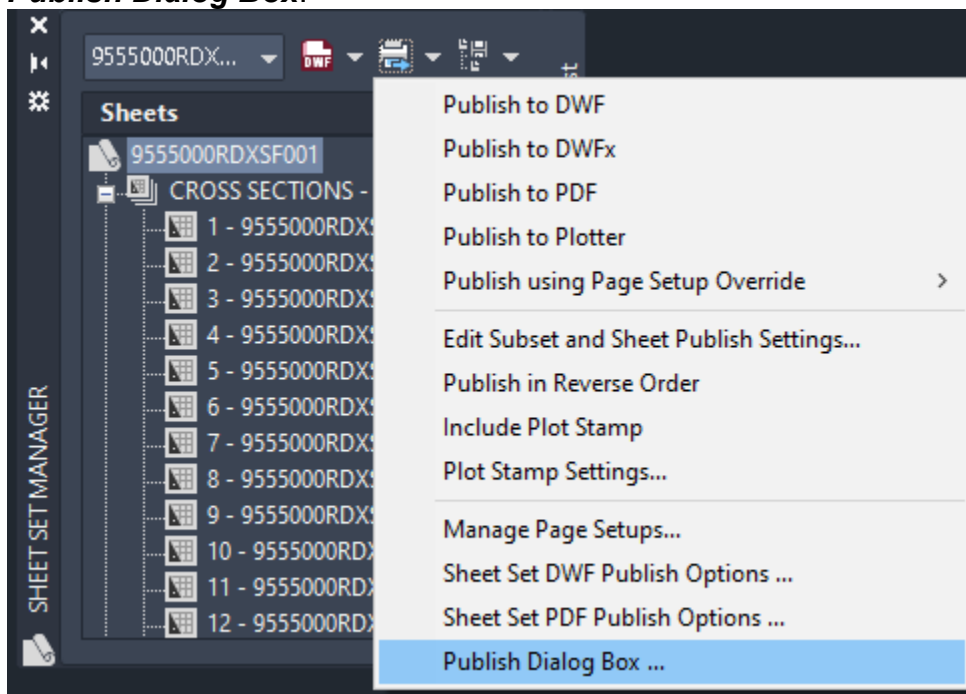
## Section I. Create \*.dsd in Civil 3D

### Procedure – Create drawing set description (\*.dsd) from Civil 3D sheet set (\*.dst)

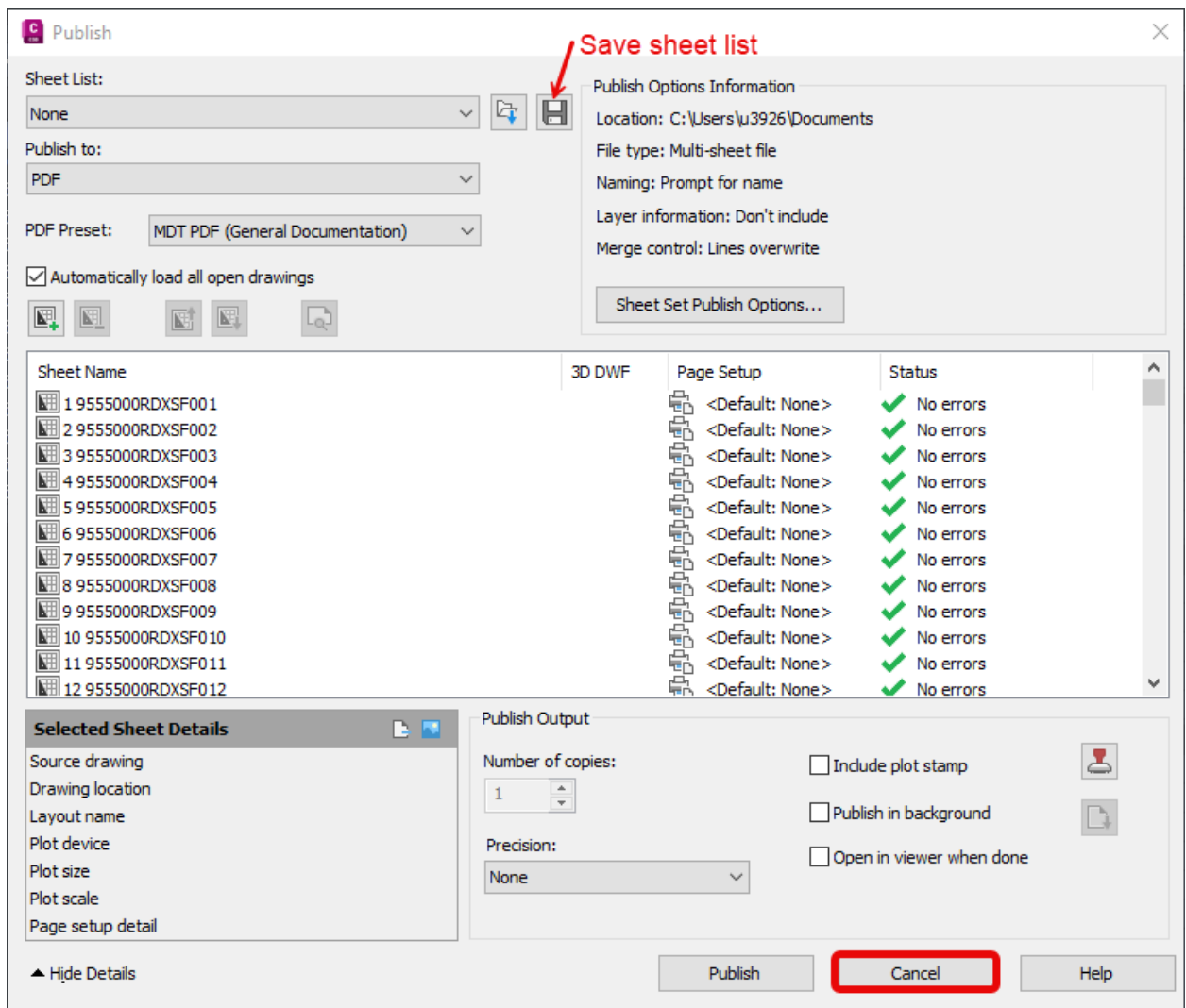
1. In Civil 3D on the **Home** tab select the **Palettes** drop down menu and open **Sheet Set Manager** or type the command **SSM**.



2. In the **Sheet Set Manager** select the **Open**, Open and browse to the Sheet Set file location and select the **\*.dst file**.
3. In the Sheet Set Manager palette, select the **Publish** drop down and select the **Publish Dialog Box**.



4. In the Publish Dialog Box, select **Save Sheet List** button and save the **\*.dsd** file in the same project folder as the **\*.dst** file.

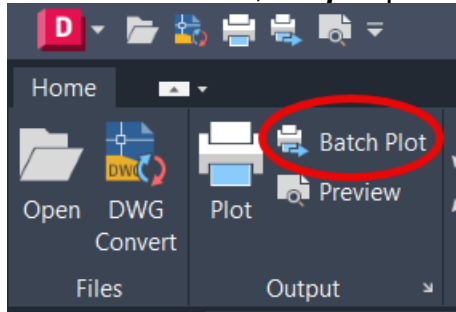


5. Select **Cancel** to close the Publish Dialog Box.

## Section II. DWG TrueView Plotting

### Procedure – Publish sheet set using DWG TrueView

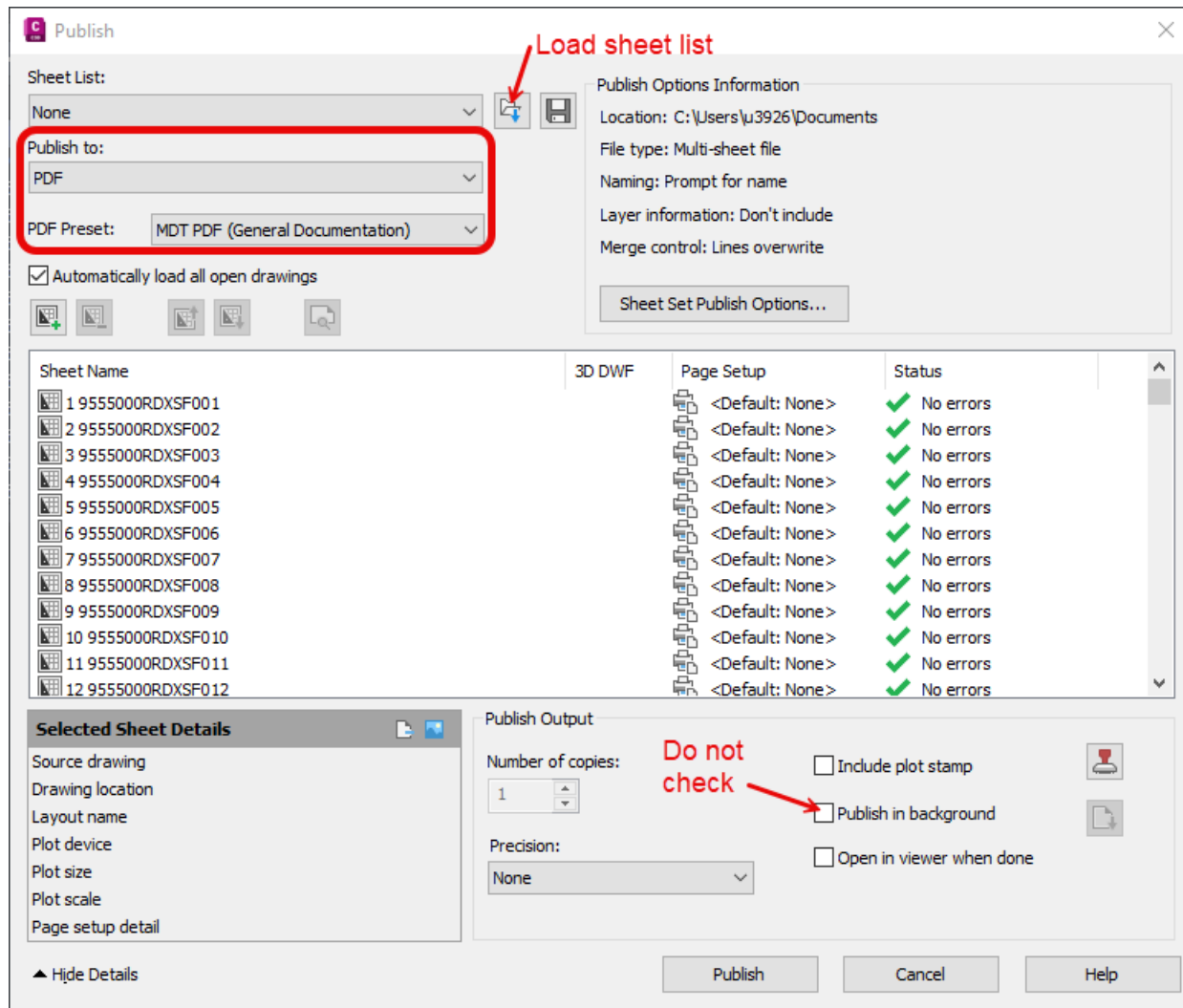
1. Open a drawing in DWG TrueView.
2. On the **Home** tab, **Output** panel, select **Batch Plot**.



3. The Publish dialog will open.
  - a. Set Publish to: **PDF**.
  - b. PDF Preset: **MDT PDF (General Documentation)**.
  - c. **Do not check the Publish in background** or the file will not print.
  - d. Select **Load Sheet List** and browse to the project folder. Select the \*.dsd file.

Note: If you get any of the following messages, follow the instructions below:

- “Do you want to save the current list of sheets?” Select **No**.
- “One or more sheets are currently in the sheet list. What do you want to do?” Select **Replace all sheets in the list**.



4. Select **Publish**
5. Select **file location and name to save PDF.**
6. **Close** the Publish dialog when finished.