



Friendly Montana Invites You



Governor John W. Bonner

"Hospitality" is no hollow word in Montana. Treasure State residents take pride in making strangers feel at home. We are one of the few states that operate entry stations at our borders to welcome the visitor and give him every aid in making his stay enjoyable.

You will find Montana an outstanding vacation state. It has great variety... in scenery and in things to do. From the garish badlands in the east to the towering Rockies in the west, you'll marvel at this vast vacationland.

When you vacation in Montana, you can see two of America's finest national parks—Glacier and Yellowstone, but a day's drive apart across the State.

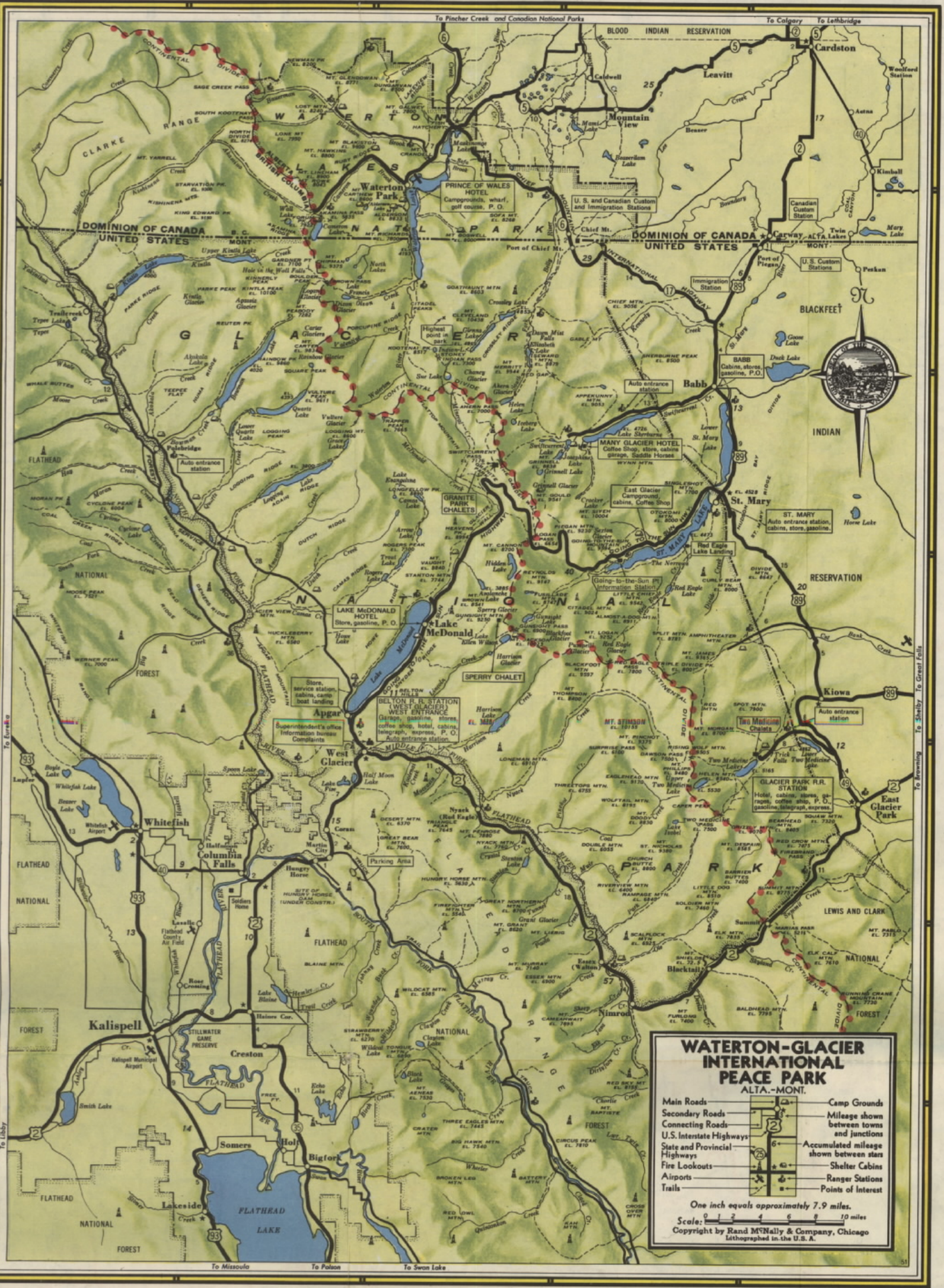
Nearly 6,000 miles of hard-surfaced highways traverse Montana. They lead you into an infinite variety of things to see and do. In this "Land of Shining Mountains" are cowboys, Indians, ghost towns, thousands of miles of fishing streams, caverns to explore, huge man-made dams, national battlefields, wildlife, and room to enjoy yourself to the fullest.

You may be a stranger when you arrive, but not for long among Montana's friendly people. Welcome to Montana—may you come again soon.

Cordially yours,
John W. Bonner
Governor of Montana

TRAFFIC REGULATIONS AND SAFETY RULES

1. Montana speed limits: reasonable and prudent to existing conditions in the day time; 55 miles per hour during the hours when lights are required; except where zoned and posted for lower speeds. No truck shall be operated at a speed greater than 45 miles per hour.
2. Vehicles entering main highways from side road or drive must come to complete stop before entering highway and yield right-of-way to vehicles traveling main highway.
3. Vehicles must drive to right of center line at all times except when passing another car. Never pass on hills or curves. Be sure you can see far enough ahead to make a safe passing before you try to do so.
4. Proper signal must be given when passing another vehicle, changing direction, stopping or slowing down on the highway. Blow horn to warn the car ahead you are going to pass—Left turn, left hand and arm extended horizontally; Right turn, left hand and arm extended upward; Stop or Slow Down, left arm extended downward.
5. Observe and obey all warning signs, such as School Zone, Stop, Slow, Danger, Curve, etc. They are placed there at considerable expense for your protection.
6. Never drive at a speed greater than that at which you can stop in the clear road visible ahead. Slow down at night or when the road is wet or icy.
7. When meeting at night or passing from the rear, dim your lights. Don't be afraid to dim first (courtesy promotes safety).
8. Slow down when approaching any child, pedestrian, bicycle, livestock, parked car, or other obstruction on the highway. Be prepared for the unexpected.
9. Don't stop or park on the main traveled portion of the road, especially on hills or curves. Pull out on the shoulder. It's safer for you and other cars.
10. Report all accidents resulting in death, personal injury or property damage of an apparent extent of \$25.00 or more to the Highway Patrol.
11. Be careful. An alert, careful driver is the best insurance against all accidents.
12. PREVENT FOREST FIRES—USE YOUR ASH TRAY.



APPROXIMATE MILEAGE

	Atlanta, Ga.	Chicago, Ill.	Dallas, Texas	Denver, Colo.	New Orleans, La.	San Francisco, Calif.	Seattle, Wash.	St. Louis, Mo.	Washington, D. C.	Edmonton, Alberta	Dawson Cr., B.C.	Fairbanks, Alaska
Billings	1502	1007	1007	1007	1007	1007	1007	1007	1007	1007	1007	1007
Bozeman	1502	1007	1007	1007	1007	1007	1007	1007	1007	1007	1007	1007
Butte	1502	1007	1007	1007	1007	1007	1007	1007	1007	1007	1007	1007
Helena	1502	1007	1007	1007	1007	1007	1007	1007	1007	1007	1007	1007
Kalispell	1502	1007	1007	1007	1007	1007	1007	1007	1007	1007	1007	1007
Livingston	1502	1007	1007	1007	1007	1007	1007	1007	1007	1007	1007	1007
Miles City	1502	1007	1007	1007	1007	1007	1007	1007	1007	1007	1007	1007
Missoula	1502	1007	1007	1007	1007	1007	1007	1007	1007	1007	1007	1007

MONTANA MILEAGE TABLE

The mileage between two points is found at the intersection of the vertical column of figures under the name of one point, and the horizontal line of figures opposite the name of the other point.

All distances are computed by way of trunk lines. Some may be materially shortened by use of secondary or county roads. Inquire locally.

Point	Atlanta, Ga.	Chicago, Ill.	Dallas, Texas	Denver, Colo.	New Orleans, La.	San Francisco, Calif.	Seattle, Wash.	St. Louis, Mo.	Washington, D. C.	Edmonton, Alberta	Dawson Cr., B.C.	Fairbanks, Alaska
Atlanta, Ga.	0	1502	1007	1007	1007	1007	1007	1007	1007	1007	1007	1007
Chicago, Ill.	1502	0	1007	1007	1007	1007	1007	1007	1007	1007	1007	1007
Dallas, Texas	1007	1007	0	1007	1007	1007	1007	1007	1007	1007	1007	1007
Denver, Colo.	1007	1007	1007	0	1007	1007	1007	1007	1007	1007	1007	1007
New Orleans, La.	1007	1007	1007	1007	0	1007	1007	1007	1007	1007	1007	1007
San Francisco, Calif.	1007	1007	1007	1007	1007	0	1007	1007	1007	1007	1007	1007
Seattle, Wash.	1007	1007	1007	1007	1007	1007	0	1007	1007	1007	1007	1007
St. Louis, Mo.	1007	1007	1007	1007	1007	1007	1007	0	1007	1007	1007	1007
Washington, D. C.	1007	1007	1007	1007	1007	1007	1007	1007	0	1007	1007	1007
Edmonton, Alberta	1007	1007	1007	1007	1007	1007	1007	1007	1007	0	1007	1007
Dawson Cr., B.C.	1007	1007	1007	1007	1007	1007	1007	1007	1007	1007	0	1007
Fairbanks, Alaska	1007	1007	1007	1007	1007	1007	1007	1007	1007	1007	1007	0

