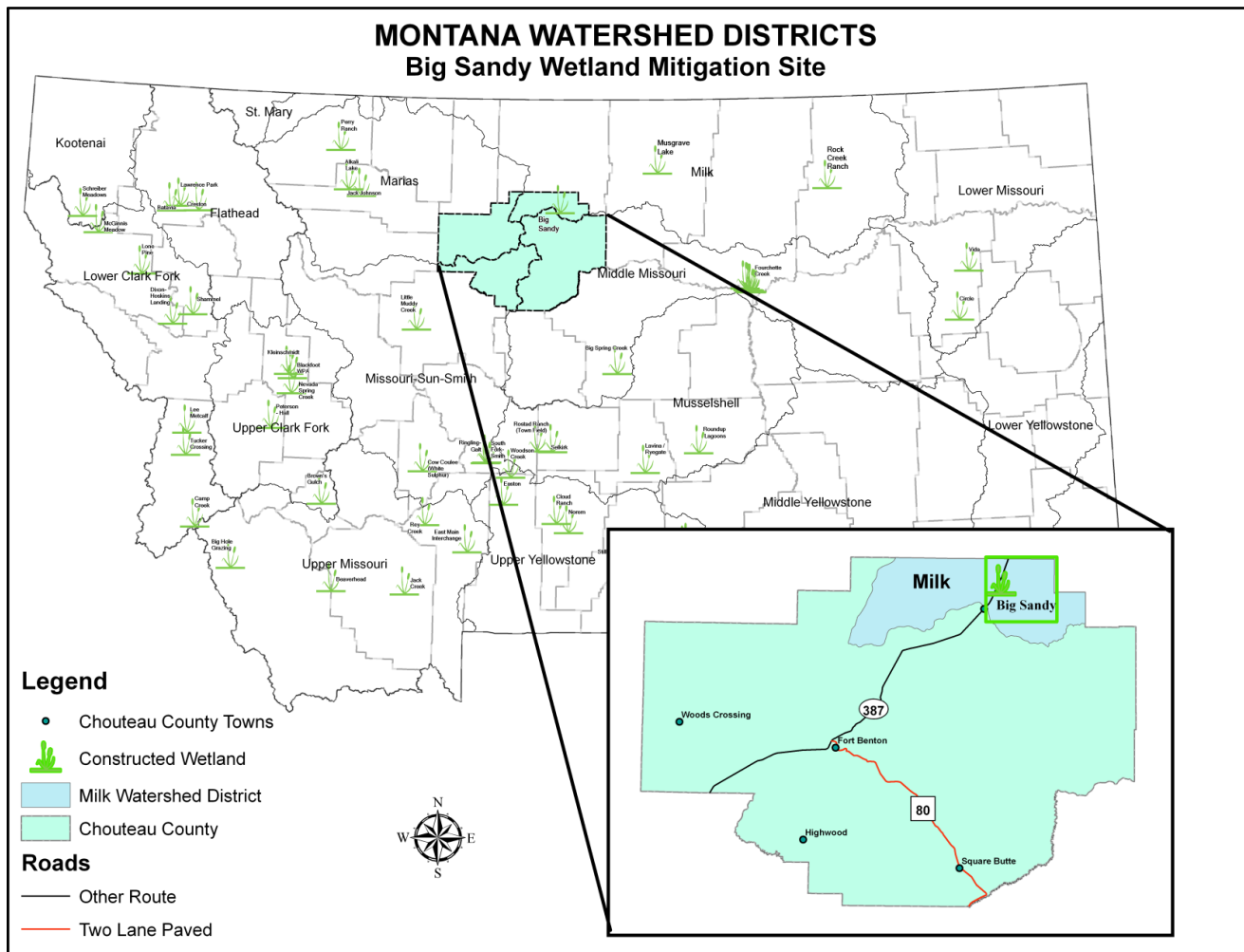


BIG SANDY

Watershed #11-Milk River Basin
Chouteau County, Montana



LAND OWNERSHIP: MONTANA DEPARTMENT OF TRANSPORTATION (MDT)

BACKGROUND INFORMATION

The Big Sandy wetland mitigation site was constructed in 1991 to mitigate wetland impacts associated with Montana Department of Transportation (MDT) projects. Constructed in Watershed #11 (Milk River Basin), the site is located northeast of Big Sandy east of U.S. Highway 87 in Chouteau County. The site includes four excavated ponds constructed to retain storm water and groundwater and to retain semi-permanent standing water. Design features included nesting islands for waterfowl, irregular shoreline with flatten slopes to allow for the development of edge cover, revegetation, and protection from grazing. This restoration project has developed approximately 13 acres of mitigation credits to mitigate transportation projects in the watershed.

WETLAND INHABITANTS

FISH	
Western Mosquitofish (<i>Gambusia affinis</i>)**	
AMPHIBIANS	
Northern Leopard Frog (<i>Rana pipiens</i>)** Western Chorus Frog (<i>Pseudacris triseriata</i>)**	
REPTILES	
Painted Turtle (<i>Chrysemys picta</i>) Plains Garter Snake (<i>Thamnophis radix</i>) Western Rattlesnake (<i>Crotalus viridis</i>)**	
BIRDS	
American Avocet (<i>Recurvirostra americana</i>) American Coot (<i>Fulica americana</i>) American Wigeon (<i>Anas americana</i>) Black-necked Stilt (<i>Himantopus mexicanus</i>) Brewer's Blackbird (<i>Euphagus cyanocephalus</i>) Canada Goose (<i>Branta Canadensis</i>) Canvasback (<i>Aythya valisineria</i>) Cinnamon Teal (<i>Anas cyanoptera</i>) Cliff Swallow (<i>Petrochelidon pyrrhonota</i>) Common Snipe (<i>Gallinago gallinago</i>) Common Yellowthroat (<i>Geothlypis trichas</i>) Eastern Kingbird (<i>Tyrannus tyrannus</i>) Gadwall (<i>Anas strepera</i>) Golden Eagle (<i>Aquila chrysaetos</i>)** Grasshopper Sparrow (<i>Ammodramus savannarum</i>)** Horned Lark (<i>Eremophila alpestris</i>)** Killdeer (<i>Charadrius vociferous</i>) Lesser Scaup (<i>Aythya affinis</i>)	Mallard (<i>Anas platyrhynchos</i>) Marbled Godwit (<i>Limosa fedoa</i>) Marsh Wren (<i>Cistothorus palustris</i>) Mourning Dove (<i>Zenaida macroura</i>) Northern Harrier (<i>Circus cyaneus</i>)** Northern Pintail (<i>Anas acuta</i>) Northern Shoveler (<i>Anas chryseata</i>) Pied-billed Grebe (<i>Podilymbus podiceps</i>)** Red-winged Blackbird (<i>Agelaius phoeniceus</i>) Rock Dove (<i>Columba livia</i>) Song Sparrow (<i>Melospiza melodia</i>)** Swainson's Hawk (<i>Buteo swainsoni</i>) Tree Swallow (<i>Tachycineta bicolor</i>) Vesper Sparrow (<i>Pooecetes gramineus</i>)** Western Grebe (<i>Aechmophorus occidentalis</i>)** Western Meadowlark (<i>Sturnella neglecta</i>) Willet (<i>Catoptrophorus semipalmatus</i>) Wilson's Phalarope (<i>Phalaropus tricolor</i>) Yellow-headed Blackbird (<i>Xanthocephalus xanthocephalus</i>)
MAMMALS	
Mule Deer (<i>Odocoileus hemionus</i>) Muskrat (<i>Ondatra zibethicus</i>) Pronghorn (<i>Antilocapra americana</i>) Raccoon (<i>Procyon lotor</i>) Richardson's Ground Squirrel (<i>Spermophilus richardsonii</i>)	
** Observed by MDT during prior visits; not observed during formal 2001 monitoring activities.	



Marsh Wren



Northern Leopard Frog

WETLAND VEGETATION

Dominate wetland species

Type 1- Broad-leaf cattail (*Typha latifolia*)

Type 2- Foxtail barley/ American bulrush (*Hordeum jubatum/Scripus americanus*)

Type 3- Pondweed/Water milfoil (*Potamogeton/Myriophyllum*)



***Typha latifolia* (Broadleaf cattail)**

Big Sandy



Click the icon below for complete monitoring reports for this site (2001)

