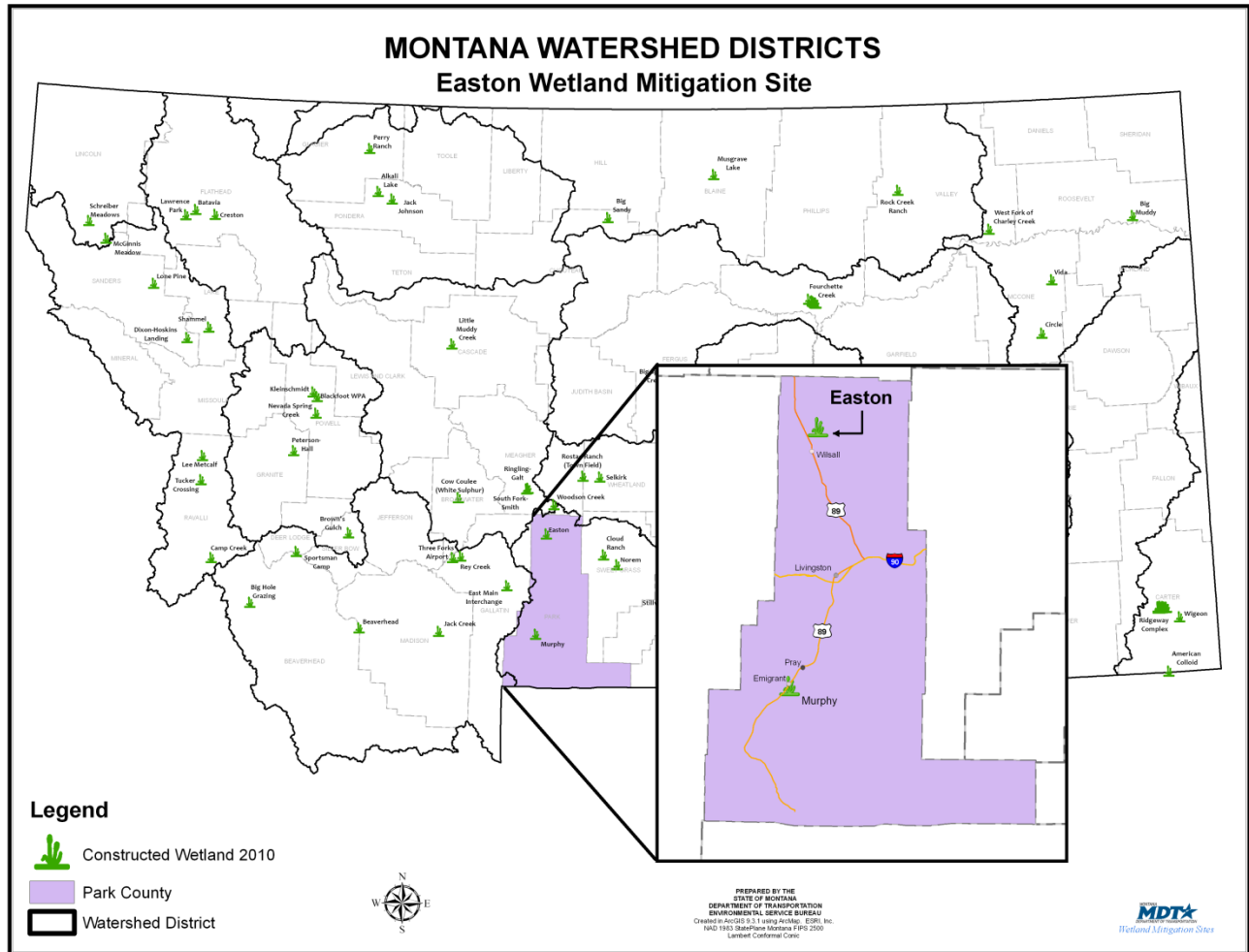


EASTON

Watershed # 13-Upper Yellowstone River Basin
Park County, Montana



LAND OWNERSHIP: PRIVATE

BACKGROUND INFORMATION

The property is located approximately 3 miles east of the US Highway 89 corridor and 4 miles northeast of the town of Wilsall. The site is on private property protected by an Montana Department of Transportation (MDT) wetland conservation adjacent to the Shields River in Watershed #13 – Upper Yellowstone River Basin. This restoration project is anticipated to provide approximately 27 acres of mitigation credits for MDT projects in the watershed.

WETLAND INHABITANTS

COMMON NAME	SCIENTIFIC NAME
AMPHIBIAN	
Columbia spotted frog	<i>Rana luteiventris</i>
BIRD	
American Crow	<i>Corvus brachyrhynchos</i>
American Goldfinch	<i>Spinus tristis</i>
AMERICAN ROBIN	<i>Turdus migratorius</i>
AMERICAN WIGEON	<i>Anas americana</i>
Bald Eagle	<i>Haliaeetus leucocephalus</i>
Bank Swallow	<i>Riparia riparia</i>
Black-billed Magpie	<i>Pica hudsonia</i>
CANADA GOOSE	<i>Branta canadensis</i>
Cedar Waxwing	<i>Bombycilla cedrorum</i>
Eastern Kingbird	<i>Tyrannus tyrannus</i>
Golden Eagle	<i>Aquila chrysaetos</i>



Click the icon below for complete monitoring reports for this site (2010)



Wetland Mitigation Site