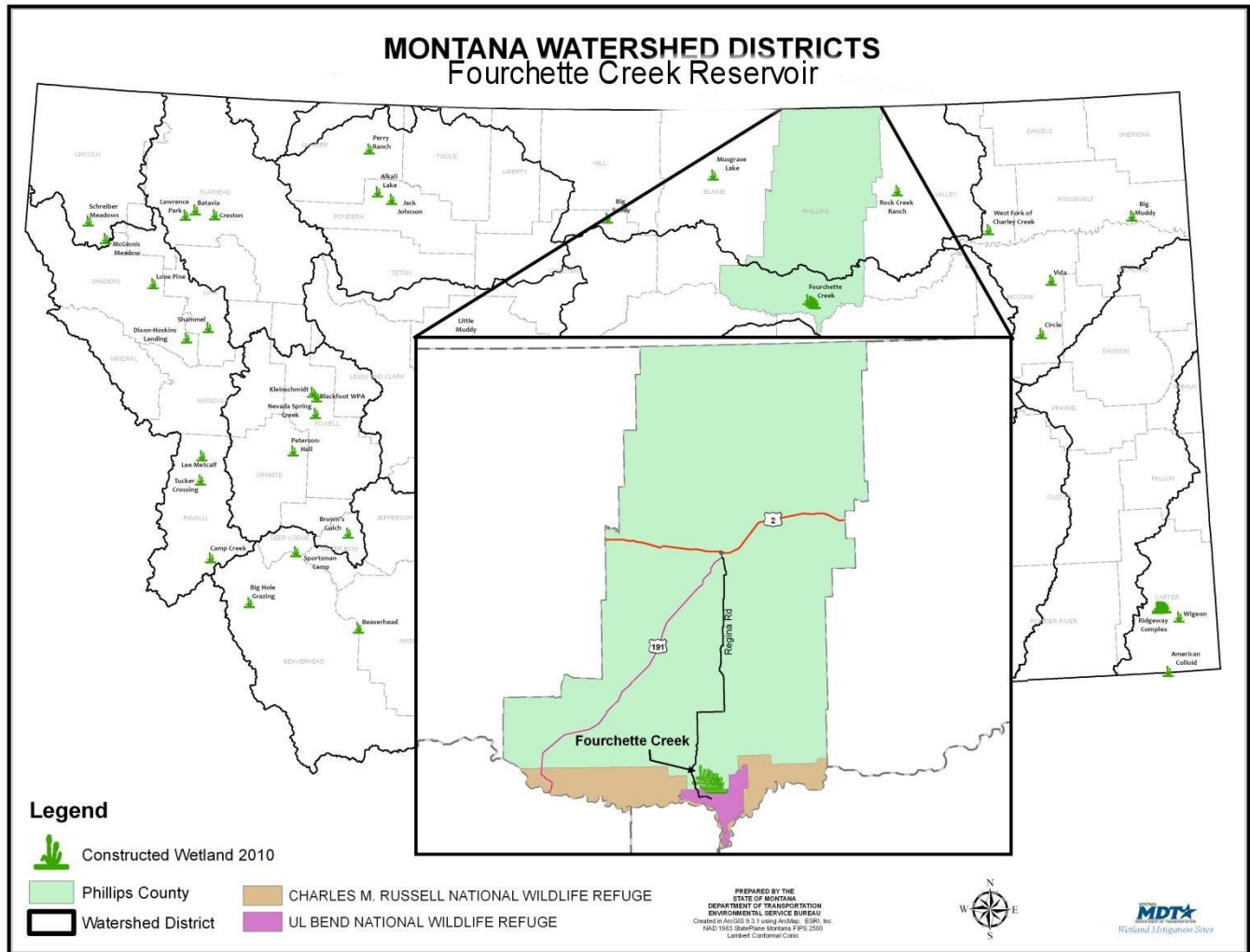


FOURCHETTE CREEK RESEVOIR

(INCLUDES: FLASHLIGHT, PINTAIL, PENGUIN, PUFFIN, AND ALBTROSS)

Watershed # 9-Middle Missouri River Basin

Phillips County, Montana



LAND OWNERSHIP: BUREAU OF LAND MANAGEMENT (BLM)

BACKGROUND INFORMATION

The Fourchette Creek Reservoir Complex was constructed in the Missouri River Breaks in 1997 and is considered the first attempted wetland mitigation site in Montana. The project was constructed to mitigate wetland impacts associated with Montana Department of Transportation (MDT) projects constructed in Watershed #9 (Middle Missouri River Basin). The site is located approximately 15 miles southwest of Sun Prairie in Phillips County. It was constructed on Bureau of Land Management (BLM) lands northwest of the Charles M. Russell National Wildlife Refuge. This restoration project was anticipated to provide approximately 10 acres of mitigation.

WETLAND INHABITANTS

FISH	Penguin	Flashlight	Pintail	Albatross	Puffin
Unidentified Minnow Species (<i>Hybognathus</i> sp.)		X			
AMPHIBIANS					
Western Chorus Frog (<i>Pseudacris triseriata</i>)	X	X		X	
Northern Leopard Frog (<i>Rana pipiens</i>)	X	X	X		
Woodhouse's Toad (<i>Bufo woodhousii</i>)					X
Short-horned Lizard (<i>Phrynosoma hernandesi</i>)					
REPTILES					
Painted Turtle (<i>Chrysemys picta</i>)	X	X	X		
Plains Garter Snake (<i>Thamnophis radix</i>)	X	X			
BIRDS					
Blue-winged Teal (<i>Anas discors</i>)	X		X	X	
Eastern Kingbird (<i>Tyrannus tyrannus</i>)	X	X	X	X	
Northern Harrier (<i>Circus cyaneus</i>)		X			X
Killdeer (<i>Charadrius vociferous</i>)	X	X	X	X	
Spotted Sandpiper (<i>Actitis macularia</i>)	X	X	X		
Gadwall (<i>Anas strepera</i>)			X	X	
American Avocet (<i>Recurvirostra americana</i>)				X	
Savannah Sparrow (<i>Passerculus sandwichensis</i>)	X	X	X		
Willet (<i>Catoptrophorus semipalmatus</i>)	X			X	
Mourning Dove (<i>Zenaidura macroura</i>)	X				
Northern Pintail (<i>Anas acuta</i>)	X				
Marbled Godwit (<i>Limosa fedoa</i>)		X		X	
Vesper Sparrow (<i>Pooecetes gramineus</i>)			X		
Northern Shoveler (<i>Anas chlypeata</i>)			X		
Grebe (<i>Podiceps</i> sp.)	X		X		
Wilson's Phalarope (<i>Phalaropus tricolor</i>)			X		
Canada Goose (<i>Branta canadensis</i>)	X	X			
American Coot (<i>Fulica americana</i>)					
MAMMALS					
Elk (<i>Cervus elaphus</i>)	X			X	X
Coyote (<i>Canis latrans</i>)		X	X	X	X
Mule Deer (<i>Odocoileus hemionus</i>)					X
Raccoon (<i>Procyon lotor</i>)			X		
Red Fox (<i>Vulpes vulpes</i>)				X	
Muskrat (<i>Ondatra zibethicus</i>)				X	
Pronghorn (<i>Antilocapra americana</i>)		X			
Black-tailed Jack Rabbit (<i>Lepus californicus</i>)					

Bolded species were observed during 2004 monitoring. All other species were observed during one or more of the previous monitoring years, but not during 2004.



Spotted Sandpiper



Red Fox

WETLAND VEGETATION

Dominant wetland vegetation

Five types of communities were observed:

Type 1- Foxtail barley/Spike rush (*Hordeum jubatum*/*Eleocharis spp.*)

Type 2- Water milfoil / Pondweed (*Myriophyllum spp./Potamogeton spp.*)

Type 3- Foxtail barley/ Wheatgrass (*Hordeum jubatum/Agropyron spp.*)

Type 4- Saltmarsh bulrush/ Broad-leaf cattail (*Scirpus maritimus/Typha latifolia*)

Type 5- Rough cocklebur (*Xanthium strumarium*)



Saltmarsh bulrush*

*Gary Larson @ USDA-NRCS PLANTS Database / USDA NRCS. 1992. *Western wetland flora: Field office guide to plant species*. West Region, Sacramento.

Fourchette Creek Reservoir



Click the icon below for complete monitoring reports for this site (2001 to 2004)

