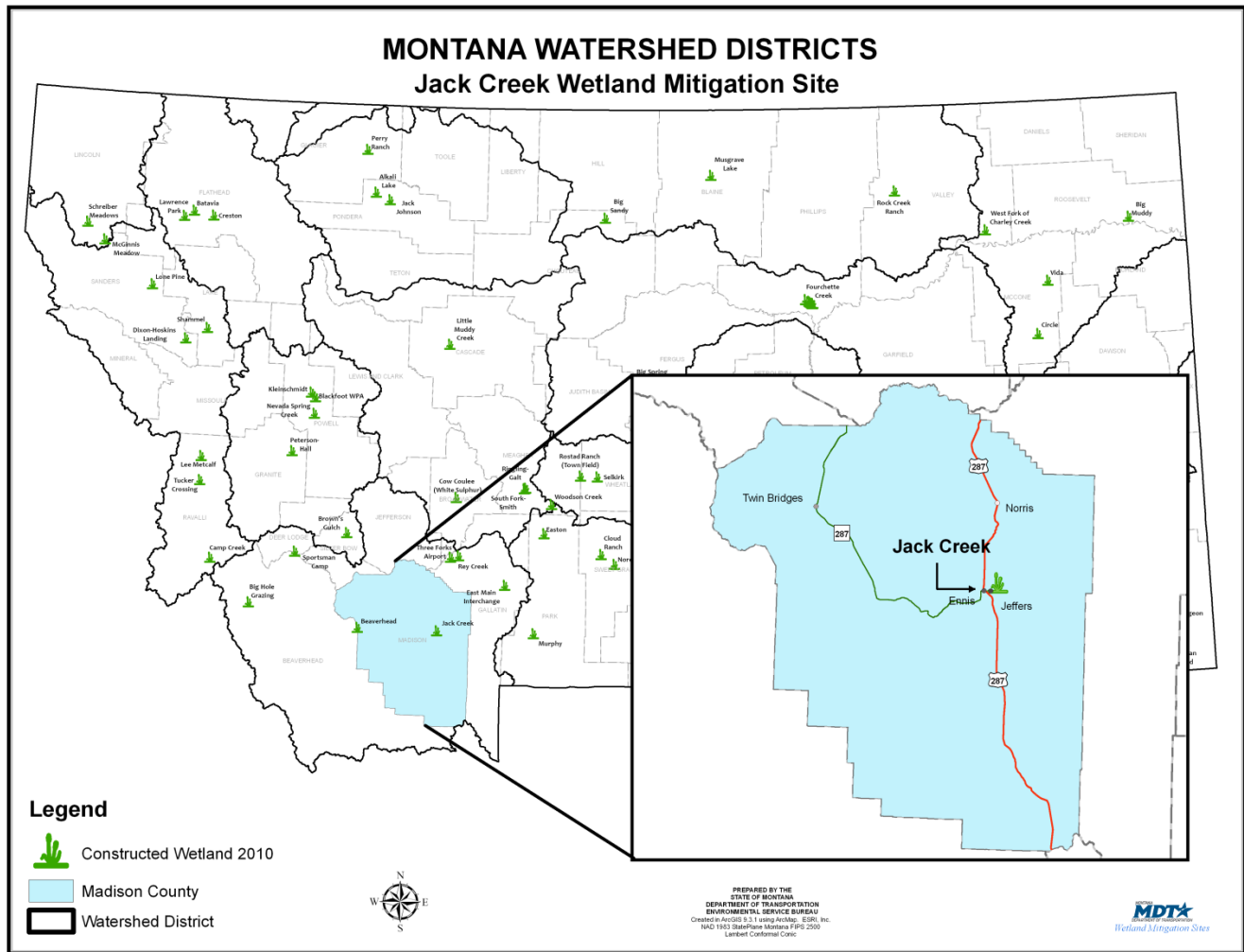


JACK CREEK

Watershed # 6-Upper Missouri River Basin
Madison County, Montana



LAND OWNERSHIP: PRIVATE

BACKGROUND INFORMATION

The Jack Creek Ranch stream and wetland restoration project was completed by Jack Creek Ranch LLC and Aquatic Design and Construction (ADC), now Oasis Environmental, Inc. in the summer and fall of 2003 to provide mitigation for wetland impacts associated with Montana Department of Transportation (MDT) projects. The site is located on private property protected with a MDT Wetland Conservation Easement northeast of the town of Ennis in watershed #6 (Upper Missouri River Basin). The surrounding land uses include livestock pastures and hay production. The project is anticipated to provide 50 acres of mitigation credits to mitigate transportation projects in the watershed.

WETLAND INHABITANTS

| | |
|--|--|
| REPTILES | |
| None | |
| AMPHIBIANS | |
| None | |
| FISH | |
| Brook trout (<i>Salvelinus fontinalis</i>) Brown trout (<i>Salmo trutta</i>) | Rainbow trout (<i>Oncorhynchus mykiss</i>) Long nose dace (<i>Rhinichthys cataractae</i>) |
| CRUSTACEAN | |
| Crayfish | |
| BIRDS | |
| American Kestrel (<i>Falco sparverius</i>) American Robin (<i>Turdus migratorius</i>) Bald eagle (<i>Haliaeetus leucocephalus</i>) Canada Goose (<i>Branta canadensis</i>) Cinnamon Teal (<i>Anas cyanoptera</i>) Common Goldeneye (<i>Bucephala clangula</i>) Common Merganser (<i>Mergus merganser</i>) Common Snipe (<i>Gallinago gallinago</i>) Eastern Kingbird (<i>Tyrannus tyrannus</i>) Great Blue Heron (<i>Ardea herodias</i>) Green-winged Teal (<i>Anas crecca</i>) Killdeer (<i>Charadrius vociferous</i>) Lesser Scaup (<i>Aythya fuligula</i>) Mallard (<i>Anas platyrhynchos</i>) Northern Flicker (<i>Colaptes auratus</i>) | Northern Harrier (<i>Circus cyaneus</i>) Red-tailed hawk (<i>Buteo jamaicensis</i>) Red-winged Blackbird (<i>Agelaius phoeniceus</i>) Ring-necked Pheasant (<i>Phasianus colchicus</i>) Sandhill Crane (<i>Grus canadensis</i>) Savannah Sparrow (<i>Passerculus sandwichensis</i>) Sora (<i>Porzana Carolina</i>) Spotted Sandpiper (<i>Actitis macularia</i>) Tree Swallow (<i>Tachycineta bicolor</i>) Trumpeter swan (<i>Cygnus buccinator</i>) Turkey Vulture (<i>Cathartes aura</i>) Western Meadowlark (<i>Sturnella neglecta</i>) Wilson's Phalarope (<i>Phalaropus tricolor</i>) Yellow-rumped Warbler (<i>Dendroica coronata</i>) |
| MAMMALS | |
| Antelope (<i>Antilocarpa Americana</i>) Beaver (<i>Castor canadensis</i>) Elk (<i>Cervus canadensis</i>) Longtail weasel (<i>Mustela frenata</i>) Moose (<i>Alces alces</i>) Mountain cottontail (<i>Sylvilagus nuttalli</i>) Mule deer (<i>Odocoileus hemionus</i>) | Muskrat (<i>Ondatra zibethicus</i>) Porcupine (<i>Erethizon dorsatum</i>) River otter (<i>Lutra canadensis</i>) Red fox (<i>Vulpes fulva</i>) White-tailed deer (<i>Odocoileus virginianus</i>) Striped Skunk (<i>Mephitis mephitis</i>) Vole spp. |



River Otter



American kestrel

WETLAND VEGETATION

Dominant wetland vegetation

Three types of communities were observed

Type 1- Quackgrass/Smooth brome/Tall fescue (*Agropyron repens/Bromus inermis/Festuca arundinacea*)

Type 2- Foxtail barley (*Hordeum jubatum*/Mixed Herbaceous Wetland)

Type 3- Broad-leaf cattail/ Bulrush species (*Typha latifolia/Scirpus spp.*)



Smooth brome

Jack Creek



Click the icon below for complete monitoring reports for this site (2003 to 2010)

