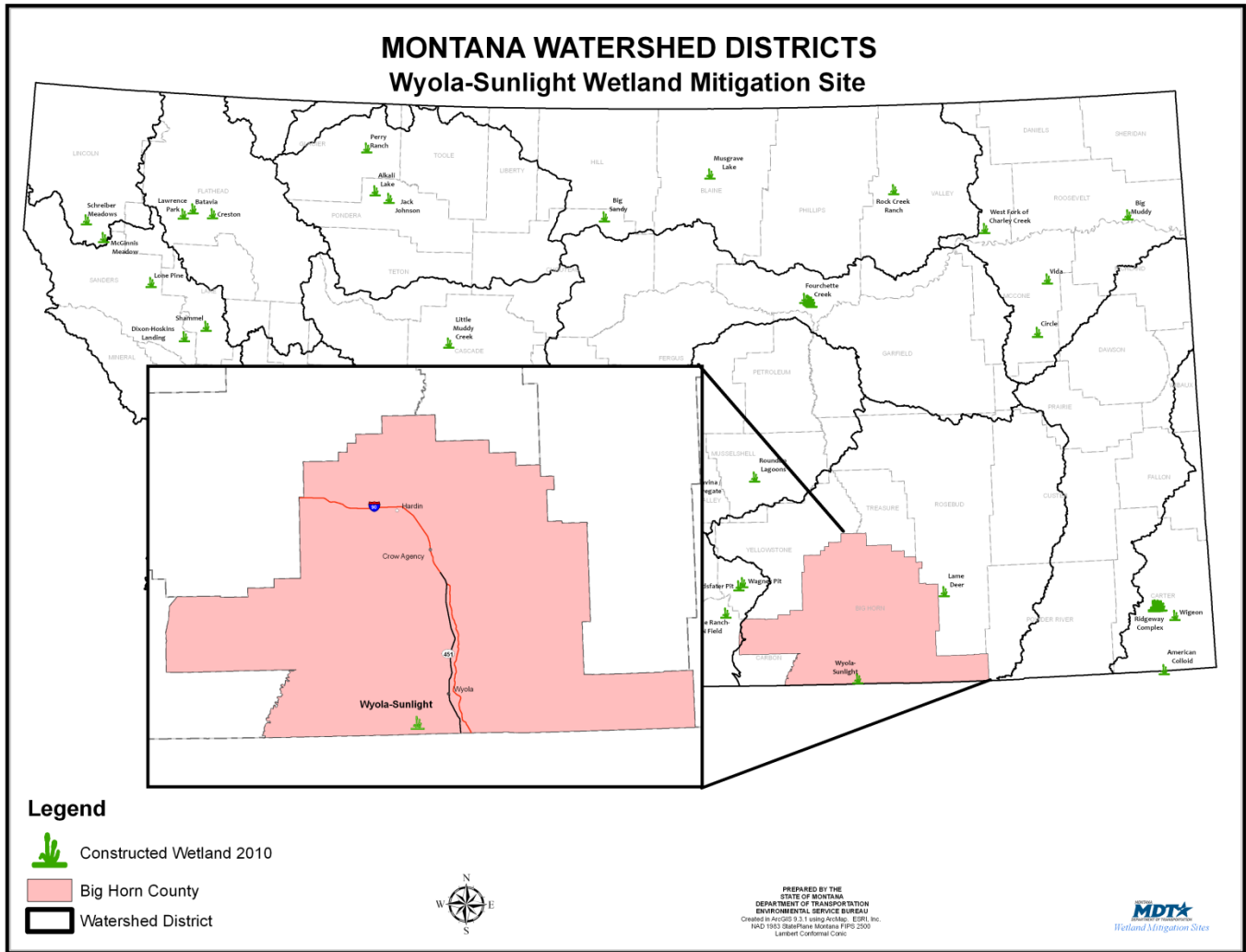


WYOLA-SUNLIGHT

Watershed # 14- Middle Yellowstone River Basin
Big Horn County, Montana



LAND OWNERSHIP: PRIVATE

BACKGROUND INFORMATION

The Wyola-Sunlight (Sunlight Ranch) wetland was constructed onsite to mitigate wetland impacts associated with MDT projects in Middle Yellowstone River Basin (Watershed #13). The site is located on private property within the Crow Reservation southwest of Wyola. This restoration project has provided approximately 1 acre of mitigation credits to mitigate transportation projects in the watershed.

WETLAND INHABITANTS

AMPHIBIANS

Leopard frogs (<i>Rana pipiens</i>)

BIRDS

American robin (<i>Turdus migratorius</i>)
--

Belted Kingfisher (<i>Ceryle alcyon</i>)
--

Blue winged teal (<i>Anas discors</i>)
--

Cedar waxwing (<i>Bombycilla cedrorum</i>)
--

Western Kingbird (<i>Tyrannus verticalis</i>)

Wilson's warbler (<i>Wilsonia pusill</i>)

MAMMALS

Beaver (<i>Castor Canadensis</i>)

White-tailed deer (<i>Odocoileus virginianus</i>)



Belted Kingfisher

WETLAND VEGETATION

Dominant wetland vegetation

Three community types were observed

Type 1- Common cattail (*Typha* spp.)

Type 2- Baltic rush (*Juncus balticus*)

Type 3- Canada thistle (*Cirsium arvense*)



Baltic rush

Wyola-Sunlight



Click the icon below for complete monitoring reports for this site (2001)

