



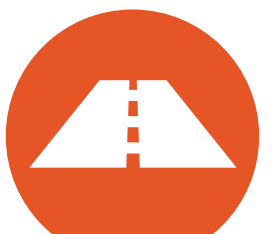
# OPEN HOUSE

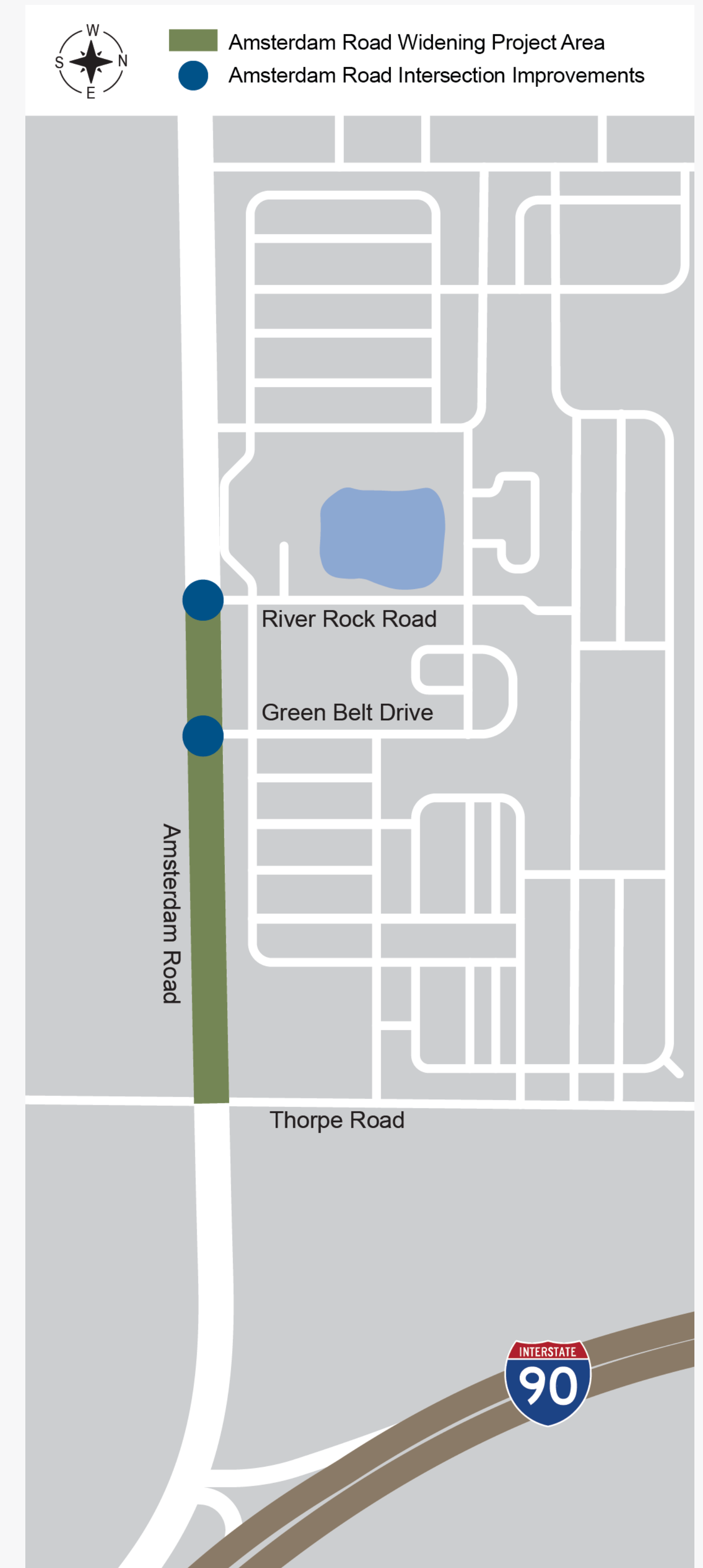
**JUNE 11, 2024  
4 TO 7 P.M.**

The Montana Department of Transportation (MDT) is hosting a public open house to discuss the the Belgrade Intersection Improvements and Amsterdam Road Intersection Improvements projects. Join us to learn about the projects!



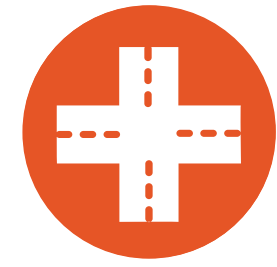
# PROJECT OVERVIEW

-  MDT and its consultant, DOWL, are designing the Amsterdam Road Intersection Improvements project. The Amsterdam Road Intersection Improvements project will enhance roadway safety features by addressing intersection-related crashes at two sites along Amsterdam Road near Belgrade.
-  The project will install a traffic signals at the intersection of Amsterdam Road with River Rock Road, and improve turn lane configuration at the intersection of Amsterdam Road with Green Belt Drive.
-  Lane improvements are planned to include an eastbound left-turn lane on Amsterdam Road and reconstruct right turn lanes to meet current design standards. Amsterdam Road is planned to be widened to three lanes from River Rock Road to Thorpe Road, including a center turn lane.





# PROJECT OVERVIEW



MDT and its consultant, DOWL, are designing the Belgrade - Intersection Improvements project. The Belgrade - Intersection Improvements project will enhance intersection safety features in Belgrade along Jackrabbit Lane and Amsterdam Road.



This project will improve traffic operations and pedestrian accessibility to meet Americans with Disabilities Act (ADA) design standards. Improvements will include upgrading the existing traffic signals by adding flashing yellow arrows and retroreflective backplates at the following intersections:

- Amsterdam Road with Thorpe Road.
- Amsterdam Road with Interstate 90 (I-90) Eastbound Ramps.
- Amsterdam Road with Jackrabbit Lane.
- Jackrabbit Lane with I-90 Westbound Ramps.



ADA improvements will also be included at the private right-in, right-out approach to the former Flying J Travel Plaza and the I 90 Eastbound Ramp from Jackrabbit Lane. The project will also review both signal and roundabout options at the intersection of North Broadway with Main Street. A full reconstruction of the intersection is being considered.



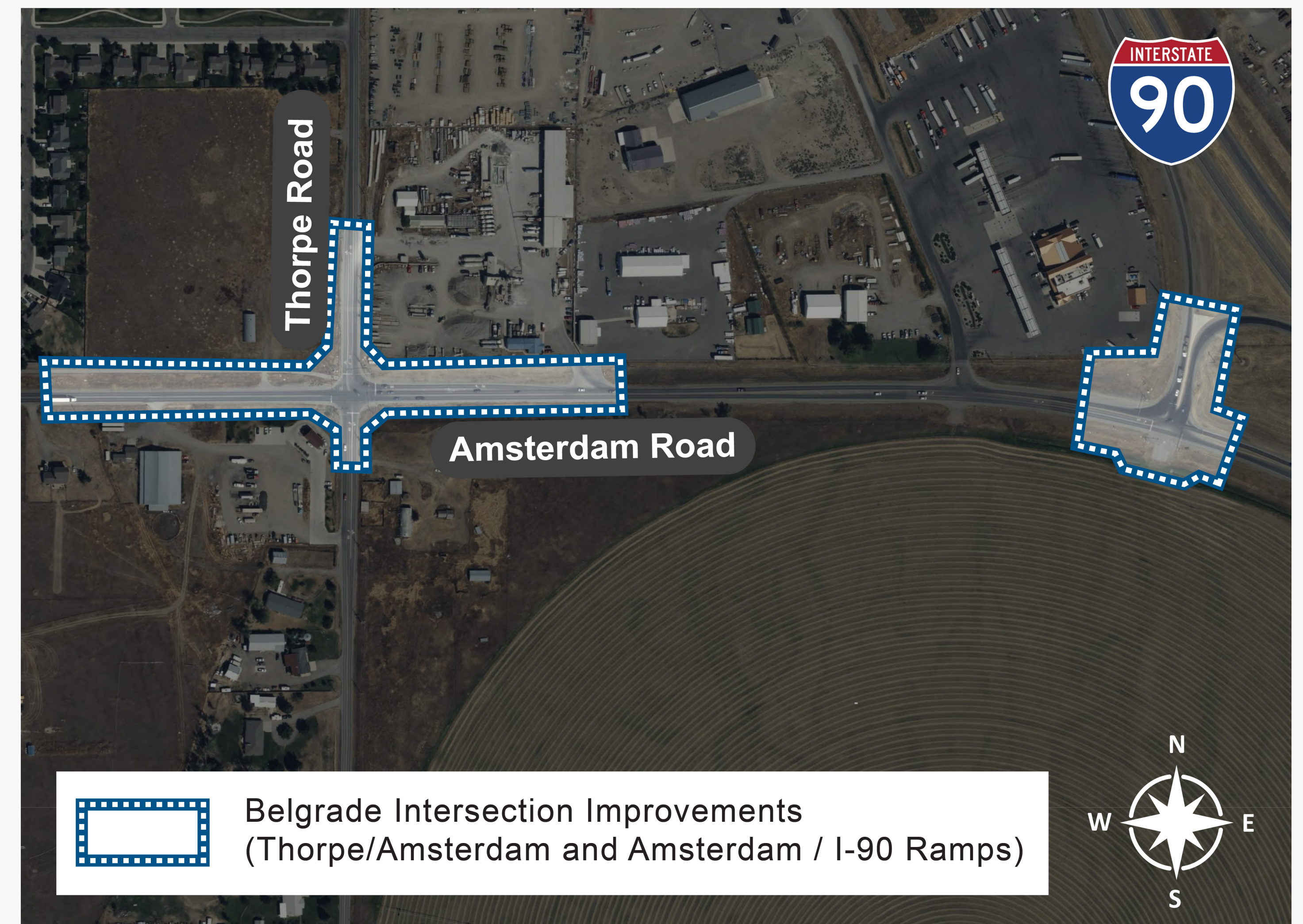


# AMSTERDAM AND BELGRADE INTERSECTIONS (THORPE/AMSTERDAM AND AMSTERDAM/ I-90 RAMPS)

**AMSTERDAM ROAD**  
INTERSECTION  IMPROVEMENTS

## Planned Improvements:

- Added turn lanes in both directions.
- New or upgraded traffic signals.
- Wider shoulders for future pedestrian facilities.





# BELGRADE INTERSECTION (JACKRABBIT LANE AND FRONTAGE ROAD/RAMPS)

## Planned Improvements:

- Enhanced safety features including flashing yellow arrows.
- Additional turn lanes and traffic signal upgrade at Jackrabbit and Amsterdam Road.
- Improved ADA features including new curb ramps and pedestrian push buttons.

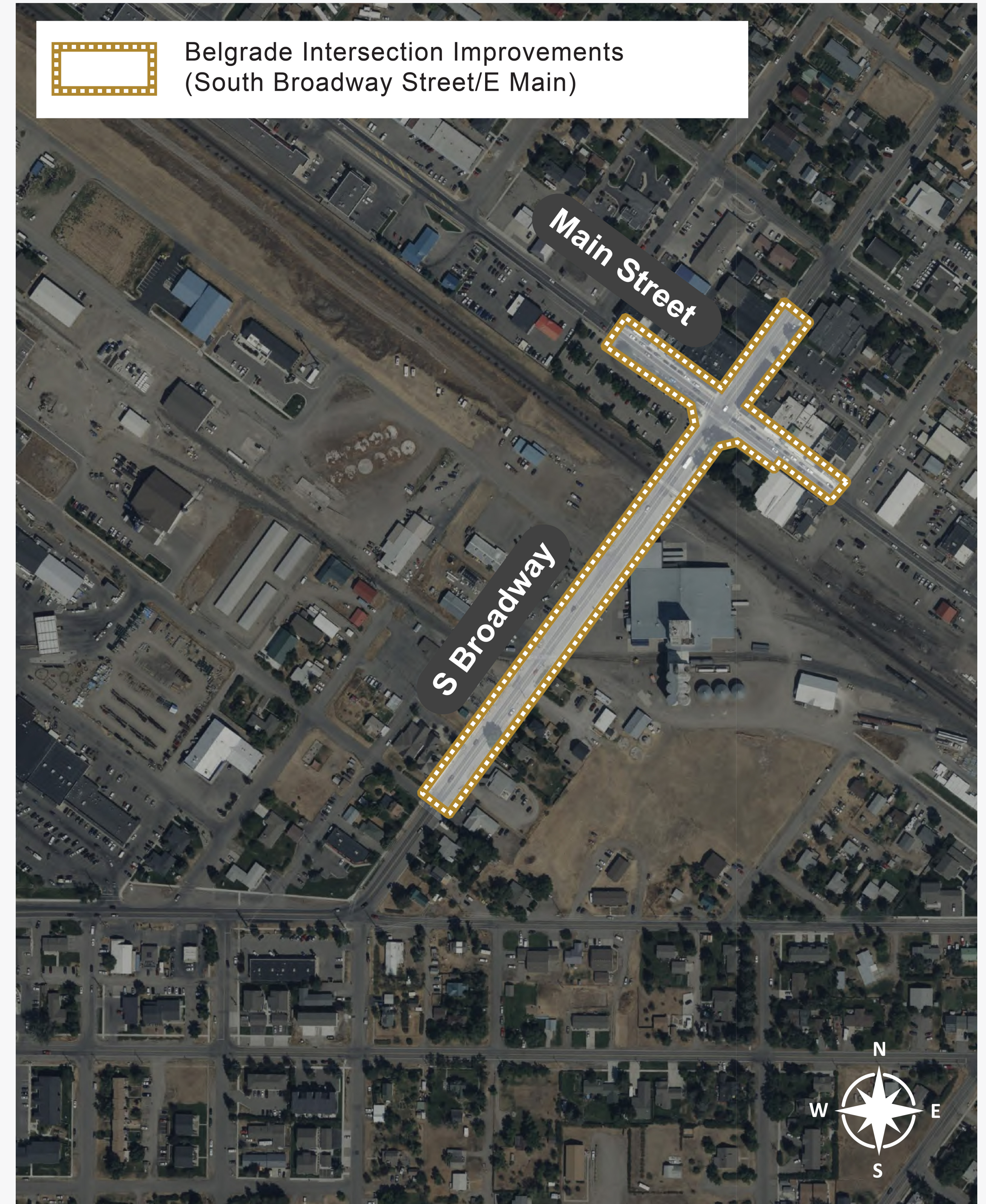




# BELGRADE INTERSECTION (SOUTH BROADWAY STREET/EAST MAIN)

## Project Benefits:

- Improved pedestrian accommodations and ADA improvements.
- Improved traffic flow in the downtown area.
- Safety improvement at the BNSF rail crossing.





# ROUNDAABOUT OF SOUTH BROADWAY AND EAST MAIN

In coordination with the city of Belgrade, MDT is considering a roundabout alternative for the intersection of South Broadway with East Main.

This roundabout may be signal controlled to alert drivers when to move through the roundabout and when to stop for railway traffic.

## Why a roundabout?

- A signal will still allow traffic congestion.
- Creates more room for pedestrian facilities.





# ADDITIONAL BELGRADE AREA PROJECTS



## QUESTIONS ABOUT OTHER BELGRADE AREA PROJECTS?

See the Active Projects page on MDT's website and the Belgrade Area Projects Interactive Map for updates!

### MDT'S ACTIVE PROJECTS



### BELGRADE AREA PROJECTS INTERACTIVE MAP





# FREQUENTLY ASKED QUESTIONS



## **Are these projects directly related to other city of Belgrade or MDT projects in the area?**

These projects are not directly linked to any other MDT or city of Belgrade projects. However, MDT, the city, and other project teams are coordinating with each other to be aware of project alternatives and scheduling.



## **Will additional right-of-way be required?**

Some additional right-of-way may be needed where widening of the roadways or intersections exceeds existing right-of-way.



## **When is construction planned?**

Construction is tentatively planned for 2027 based on completion of design and availability of funding.



## **HAVE ADDITIONAL QUESTIONS? CONTACT US!**



### PHONES:

*Amsterdam Road Intersection Improvements*

**833-396-0845**

*Belgrade Road Intersection Improvements*

**833-573-1128**



### EMAIL:

**[AmsterdamIntImp@dowl.com](mailto:AmsterdamIntImp@dowl.com)**

**[BelgradeIntImp@dowl.com](mailto:BelgradeIntImp@dowl.com)**