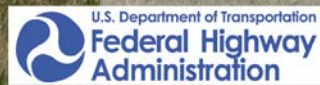




BELGRADE to BOZEMAN **corridor** FRONTAGE ROAD **study**

Public Informational Meeting #1

Welcome and Introductions



Title VI Considerations

3

This meeting is held pursuant to Title VI of the 1964 Civil Rights Act which ensures that no person shall be excluded from participation in, denied the benefits of, or otherwise be subjected to discrimination on the basis of a protected status during any MDT project.

Meeting Agenda


4

Presentation

- ▣ What is a Corridor Study?
- ▣ Historic & Projected Traffic Volumes
- ▣ Next Steps

Discussion Period

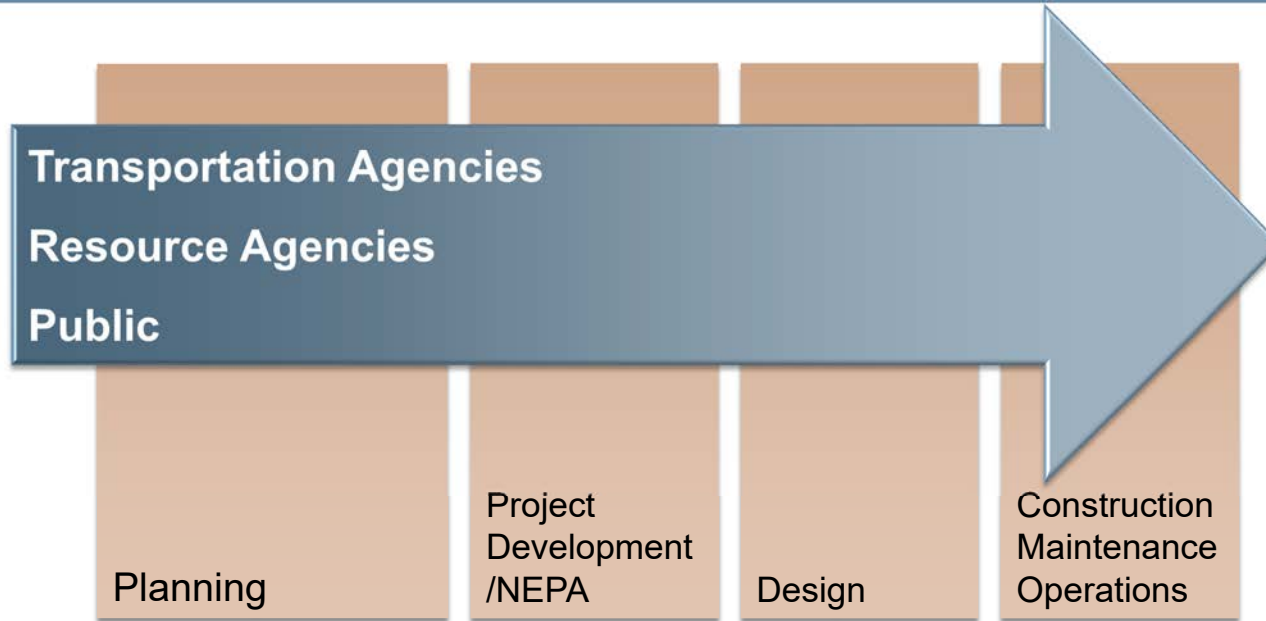




**What is a
Corridor Study?**

What is a Corridor Study?

6



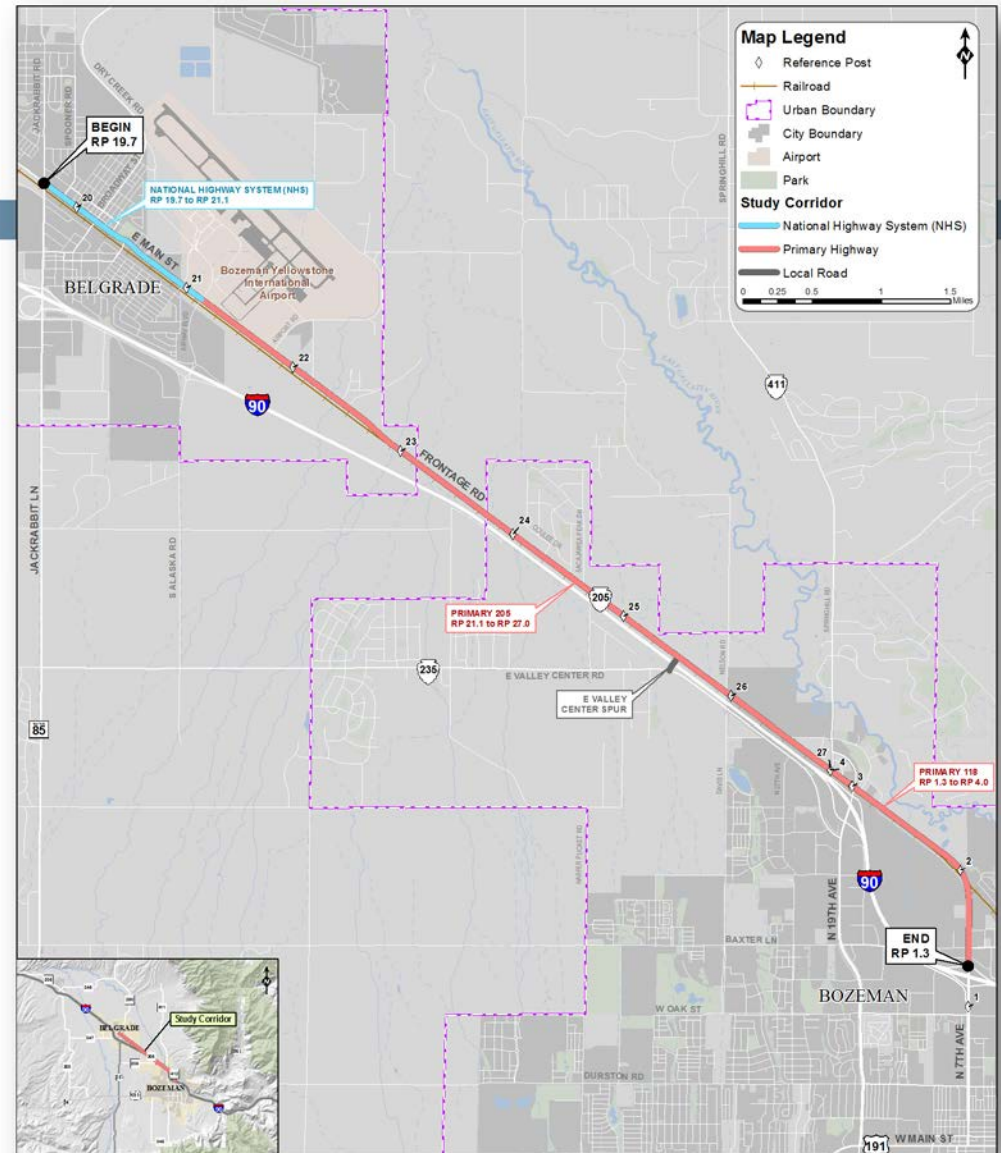
A corridor study is conducted before design, right-of-way acquisition, environmental compliance, and construction.

Study Area

7

Frontage Road (9 Miles)

- **BEGIN:** Jackrabbit Lane
- **END:** Interstate 90 (Exit 306) Westbound Ramps
- Includes Valley Center Spur Road



Background

8

Past Planning

- ▣ LRTPs
- ▣ PROST Plan
- ▣ East Belgrade Interchange
- ▣ Others

Existing Concerns

- ▣ Congestion
- ▣ Intersections
- ▣ Safety
- ▣ Non-motorized Transportation

Future Concerns

- ▣ Growth
- ▣ Development

*LRTP – Long Range Transportation Plan
PROST – Parks, Recreation, Open Space and Trails*

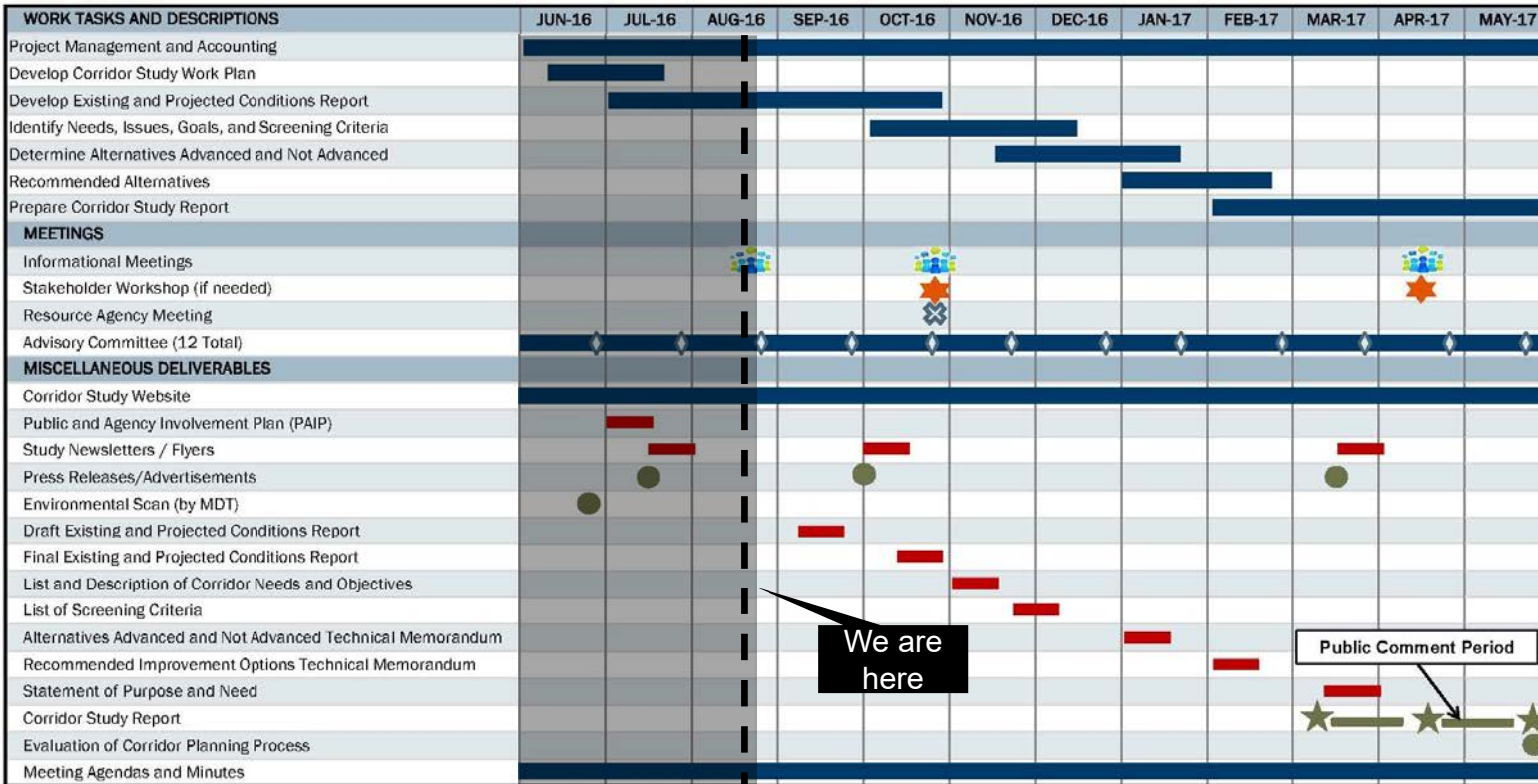
Goals and Purpose of Study

- Document existing conditions within the corridor
- Identify needs and objectives
- Identify potential impacts and constraints
- Identify feasible short- and long-range improvements
- Develop planning level cost estimates
- Develop information and data to be forwarded into the environmental process if a project moves forward from the study (dependent on available funds)

Study Schedule

Belgrade to Bozeman Frontage Road Corridor Study

STUDY SCHEDULE



We are here

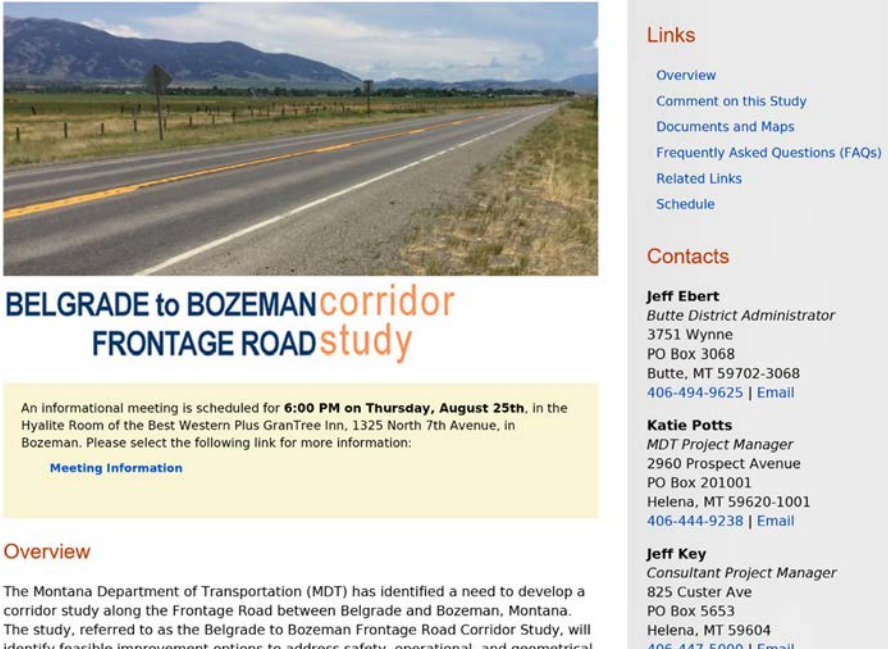
Public Comment Period

- Public Meeting
- Advisory Committee Meeting
- Resource Agency Workshop
- Stakeholder Workshop

Public Involvement

11

- Three informational meetings
 - ▣ August 25, 2016
 - ▣ Fall, 2016
 - ▣ April, 2017
- Outreach to interested parties and resource agencies, as warranted
- Study newsletters
- Website
 - ▣ www.mdt.mt.gov/belgradetobozean
- Other as needed



Links

- [Overview](#)
- [Comment on this Study](#)
- [Documents and Maps](#)
- [Frequently Asked Questions \(FAQs\)](#)
- [Related Links](#)
- [Schedule](#)

Contacts

Jeff Ebert
Butte District Administrator
3751 Wynne
PO Box 3068
Butte, MT 59702-3068
[406-494-9625](#) | [Email](#)

Katie Potts
MDT Project Manager
2960 Prospect Avenue
PO Box 201001
Helena, MT 59620-1001
[406-444-9238](#) | [Email](#)

Jeff Key
Consultant Project Manager
825 Custer Ave
PO Box 5653
Helena, MT 59604
[406-447-5000](#) | [Email](#)

Overview

The Montana Department of Transportation (MDT) has identified a need to develop a corridor study along the Frontage Road between Belgrade and Bozeman, Montana. The study, referred to as the Belgrade to Bozeman Frontage Road Corridor Study, will identify feasible improvement options to address safety, operational, and geometrical

Comments will be received through the study!

'WikiMap' Commenting Platform

12

The screenshot displays the WikiMap web application interface. At the top, a dark blue header contains the title "Belgrade to Bozeman Frontage Road" and navigation links for "About & Help", "Routes", and "Points". On the right side of the header, it shows the user is "Anonymous" and includes social media icons for Google+, Facebook, Twitter, and YouTube.

The main map area shows a route starting at a "BEGIN" marker in Belgrade and ending at an "END" marker in Bozeman. The route is highlighted in a dark grey line. The map includes various geographical features, roads, and landmarks such as the Bozeman Yellowstone International Airport, Springhill Park, and Montana State University. The Google logo is visible in the bottom left corner, and "Map data ©2016 Google Terms of Use" is in the bottom right.

On the right side of the map, there are two panels:

- Routes:** Contains instructions: "Click once to start. Click to add points along the route. Double Click at the endpoint. Then press Submit to save." Below this are three options: Automobile (represented by a brown line and a circle), Bicycle (represented by a dark blue line and a circle), and Pedestrian (represented by an orange line and a circle).
- Points:** Contains instructions: "Select point type and then place on map." Below this are three options: Automobile (represented by a car icon and a circle), Bicycle (represented by a bicycle icon and a circle), and Pedestrian (represented by a person icon and a circle).



Historic and Projected Traffic Volumes

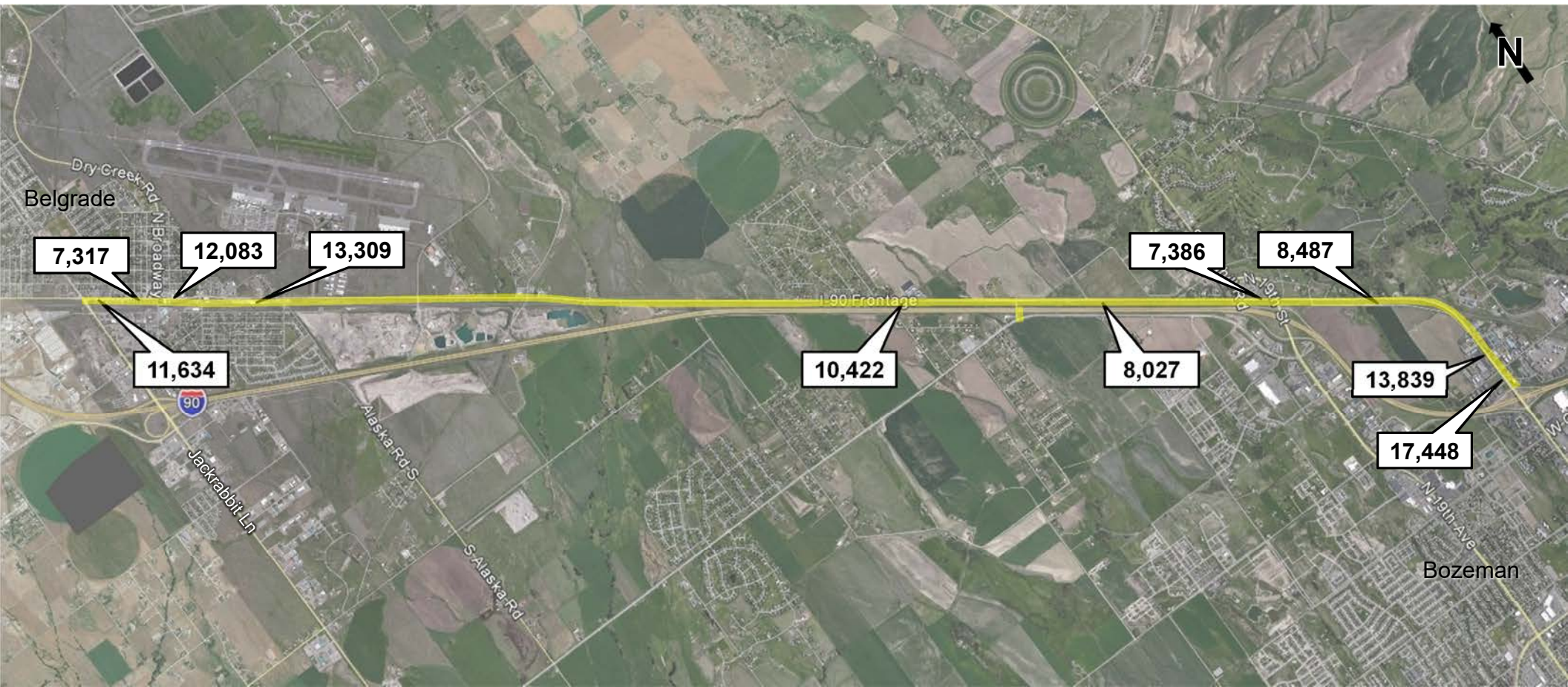
Existing AADT (2015)



Change between 2014 and 2015

Location	2014 AADT	2015 AADT	% Difference
East of Jackrabbit Lane	9,460	8,348	-11.8%
West of Broadway Street	7,210	5,250	-27.2%
East of Broadway Street	9,980	8,670	-13.1%
East of Madison Avenue	11,510	9,550	-17.0%
West of Valley Center Spur Road	11,360	7,478	-34.2%
West of Springhill Road	10,100	5,760	-43.0%
East of Springhill Road	8,370	5,300	-36.7%
North of Red Wing Drive	8,160	6,090	-25.4%
North of Griffin Drive	9,540	9,930	4.1%
South of Griffin Drive	14,410	12,520	-13.1%
Average for Corridor			-21.2%

Projected AADT (2040)





**Conclusion and
Next Steps**

Upcoming Milestones

18

- Existing & Projected Conditions Report
 - ▣ Mid-September, 2016
- Informational Meeting Number 2
 - ▣ Late-October, 2016
- Identify feasible improvement options
 - ▣ January/February, 2017
- Draft corridor study report
 - ▣ April, 2017



Submit Comments

19

□ Comment sheets

□ Study website:

www.mdt.mt.gov/belgradetobozeaman

□ Study Contacts:

Katie Potts

MDT Project Manager

(406) 444-9238

kpotts@mt.gov

Jeff Ebert

MDT Butte District Administrator

(406) 494-9625

jebert@mt.gov

□ Info on newsletter

BELGRADE to BOZEMANcorridor
FRONTAGE ROADstudy

Issue 1
August,
2016



Please join us for an informational meeting on Thursday, August 25th at 6:00 PM. The meeting will be held in the Hyalite Conference Room at the Gran Tree Inn, Bozeman.

Informational Meeting Scheduled for the Belgrade to Bozeman Frontage Road Corridor Study

The Montana Department of Transportation (MDT), in partnership with the Federal Highway Administration and in coordination with Gallatin County and the cities of Belgrade and Bozeman, is developing a corridor study of the Frontage Road between Belgrade and Bozeman. The study area includes the Frontage Road beginning in Belgrade at the intersection of Main Street and Jackrabbit Lane and extends nine miles to the east to the Interstate 90 Exit 306 westbound ramps. The study area also includes East Valley Center Spur Road.

An informational meeting will be held on Thursday, August 25th in the Hyalite Conference Room at the Gran Tree Inn, 1325 N. 7th Avenue, Bozeman. The meeting will begin with a presentation at 6:00 PM, followed by a question and answer period. Time for informal discussion with the project team will also be available.

The meeting is intended to inform interested parties about the scope and purpose of the planning study and to solicit input on existing conditions and concerns that may be relevant to the planning effort. We encourage you to attend and provide feedback about your issues, concerns, and/or support for the study.

Public input is a very important part of the process. Interested parties are encouraged to attend and participate. Comments and concerns may be submitted in writing at the meeting or sent to:

Katie Potts
Project Manager
MDT Statewide and Urban Planning
PO Box 201001
Helena MT 59620-1001
kpotts@mt.gov

Study Description

The Belgrade to Bozeman Frontage Road Corridor Study is a planning-level analysis undertaken before conducting project-level environmental compliance activities under the National and Montana Environmental Policy Acts (NEPA/MEPA). The study involves early communication with interested agencies and the public to help identify needs, constraints, and opportunities for a corridor and to determine if there are implementable improvements, given available resources and local support.

The purpose of the study is to develop a comprehensive long-range plan for managing the corridor and determining what improvements can be made to improve the corridor based on identified needs, public and agency input, and financial constraints. The study will include a package of feasible short- and long-term improvement options intended to address the transportation needs over the next twenty years. Identifying these improvement options will help the study partners define the most critical needs and allocate resources.

Corridor studies are planning activities rather than design or construction projects. The studies are designed to facilitate a smooth and efficient transition from transportation planning to project development and environmental review if a project is forwarded. The studies include consideration of multiple improvement options to address the needs and objectives within the study area. The planning process is distinct from NEPA/MEPA environmental compliance documentation and from the design, right-of-way acquisition, and construction phases of an individual project.

For more information, visit:
www.mdt.mt.gov/belgradetobozeaman

MDT
DEPARTMENT OF TRANSPORTATION

Alternative accessible formats of this information will be provided upon request by contacting the Office of Civil Rights, P.O. Box 201001, Helena, MT 59620, (406) 444-6220, fax (406) 444-7243, or e-mail to ofccr@mt.gov. Those using a TTY may call (800) 333-7592 or through the Montana Relay Service at 711.

Page 1