



BILLINGS
bypass
NCPD 56(55) CN 4199



VIRTUAL PUBLIC MEETING

July 2, 2020

PANELISTS



Rod Nelson, PE, District Administrator

Fred Bente, Project Manager

Mike Taylor, PE, Pre-construction Engineer

Michael Fabricius, Right-of-way Supervisor



Doug Enderson, PE, PTOE, Design Project Manager

Lisa Olmsted, Public Involvement Manager



VIRTUAL MEETING AGENDA

- ✓ Project Team
- ✓ Project Overview
- ✓ Project Segments
- ✓ Johnson Lane Interchange
- ✓ Railroad Overpass
- ✓ Q&A

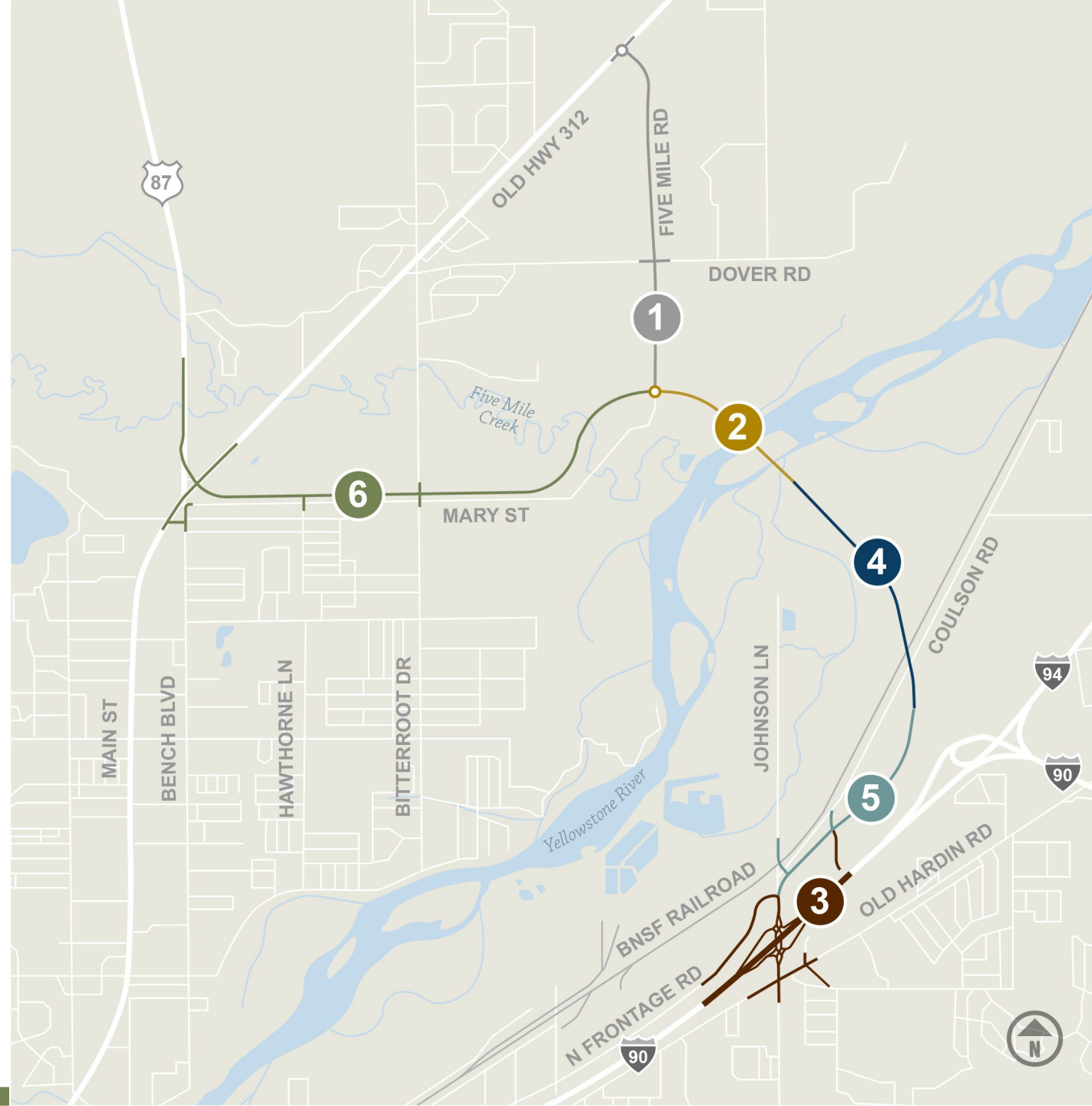
PROJECT TEAM





- 1** **Five Mile Road**
Under Construction
- 2** **Yellowstone River**
Estimated completion Fall 2022
- 3** **Johnson Lane Interchange**
+/- 2022 (Tentative)*
- 4** **RR O'Pass**
+/- 2023 (Tentative)*
- 5** **Johnson Ln Intch – RR O'Pass**
+/- 2024 (Tentative)*
- 6** **Five Mile Rd to US 87**
+/- 2025 (Tentative)*

**Letting dates subject to change*



FIVE MILE ROAD



Schedule

Currently under construction

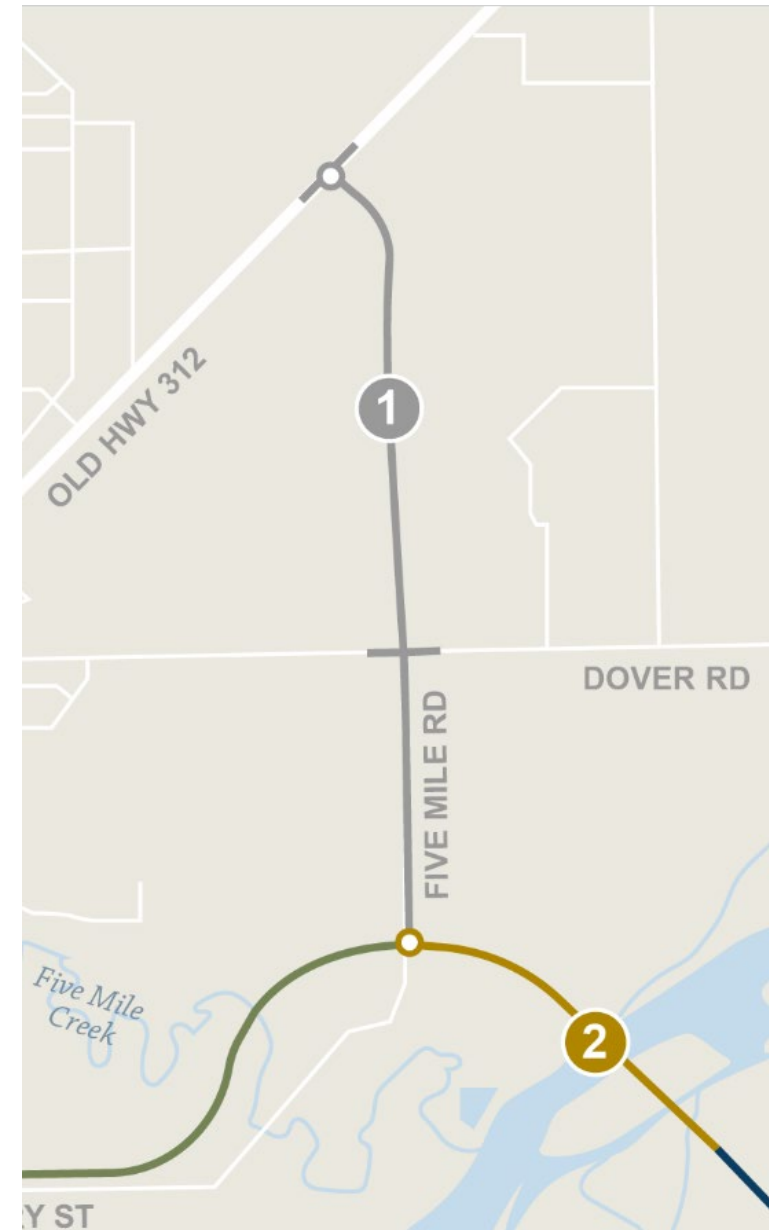
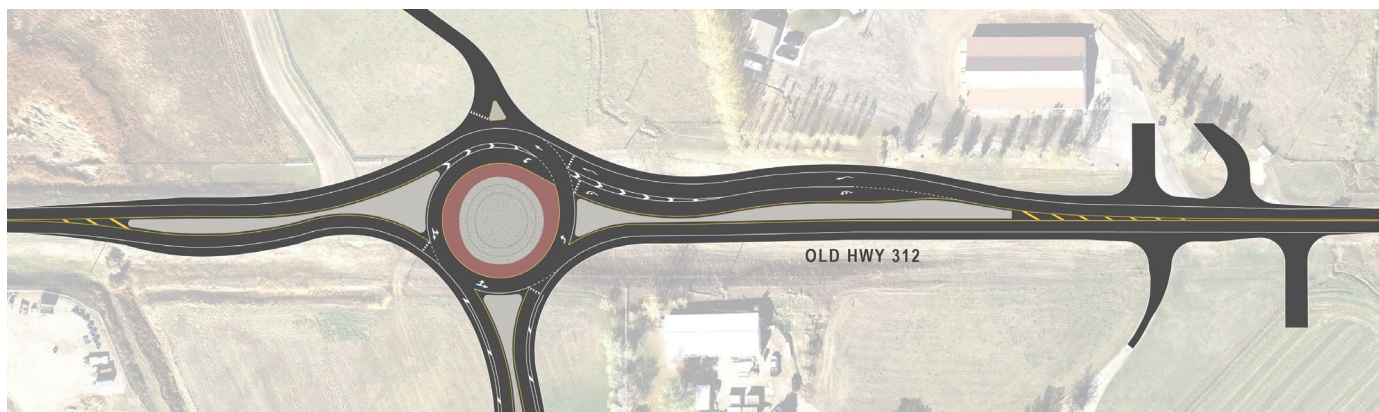
Anticipated completion: Fall 2020



Features

Roundabout at Old HWY 312

Two-way stop controlled intersection at Dover Road



YELLOWSTONE RIVER



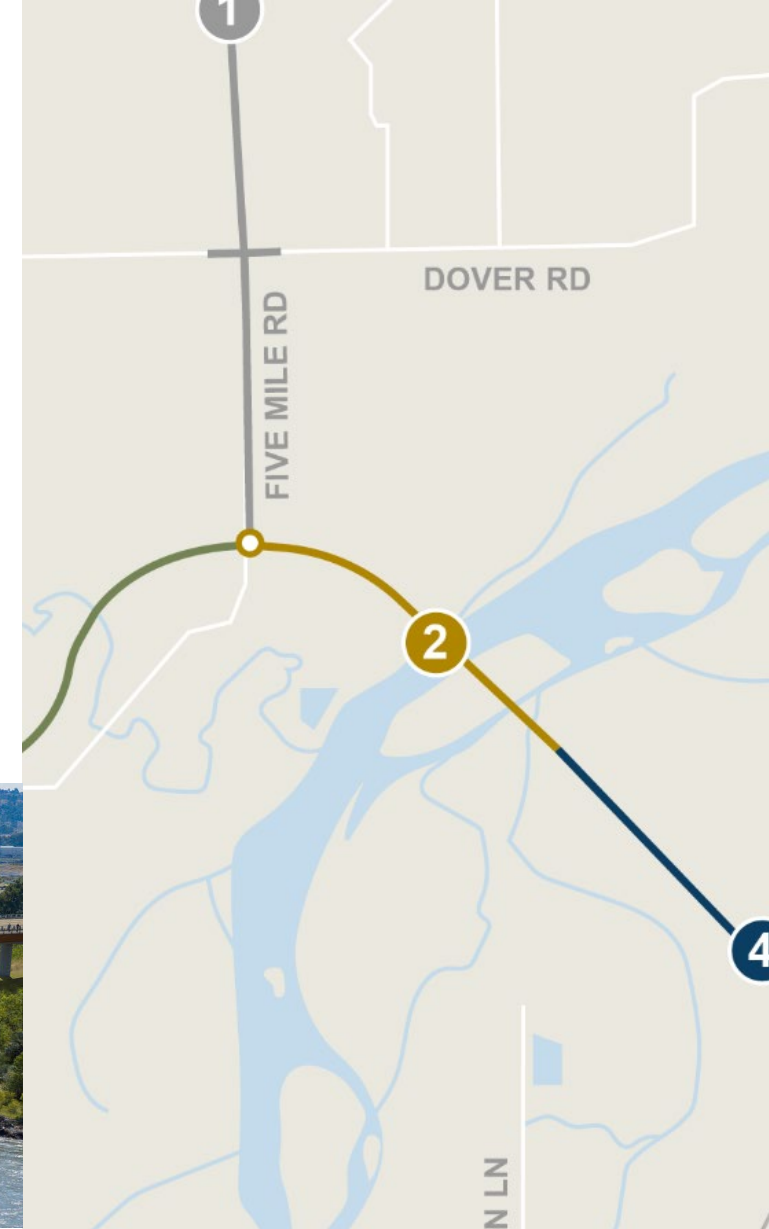
Schedule

Anticipated completion: Fall 2022



Features

Bridge across Yellowstone River
Bike/Ped Lane



JOHNSON LANE INTERCHANGE



Schedule

+/- 2022 (Tentative)

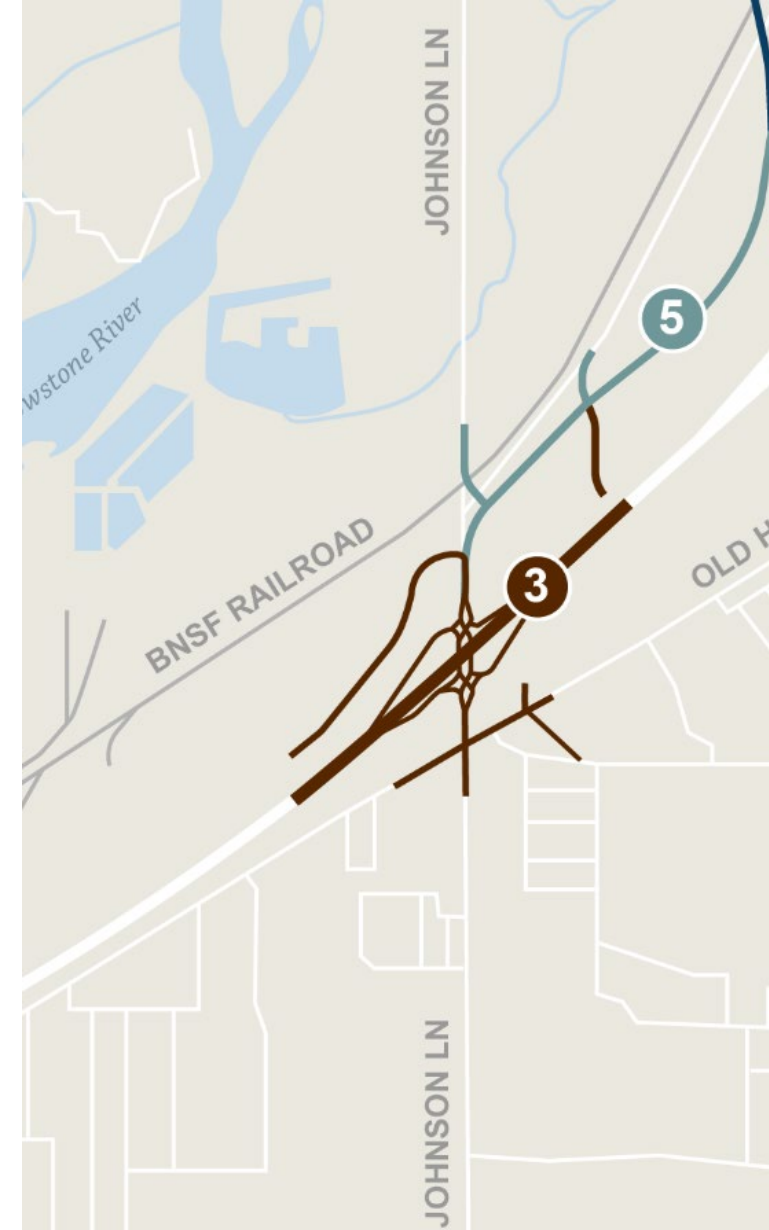
Granite/LHC selected
as CM/GC summer
2019



Features

Diverging Diamond
Interchange (DDI)

Safety Improvements



RAILROAD OVERPASS



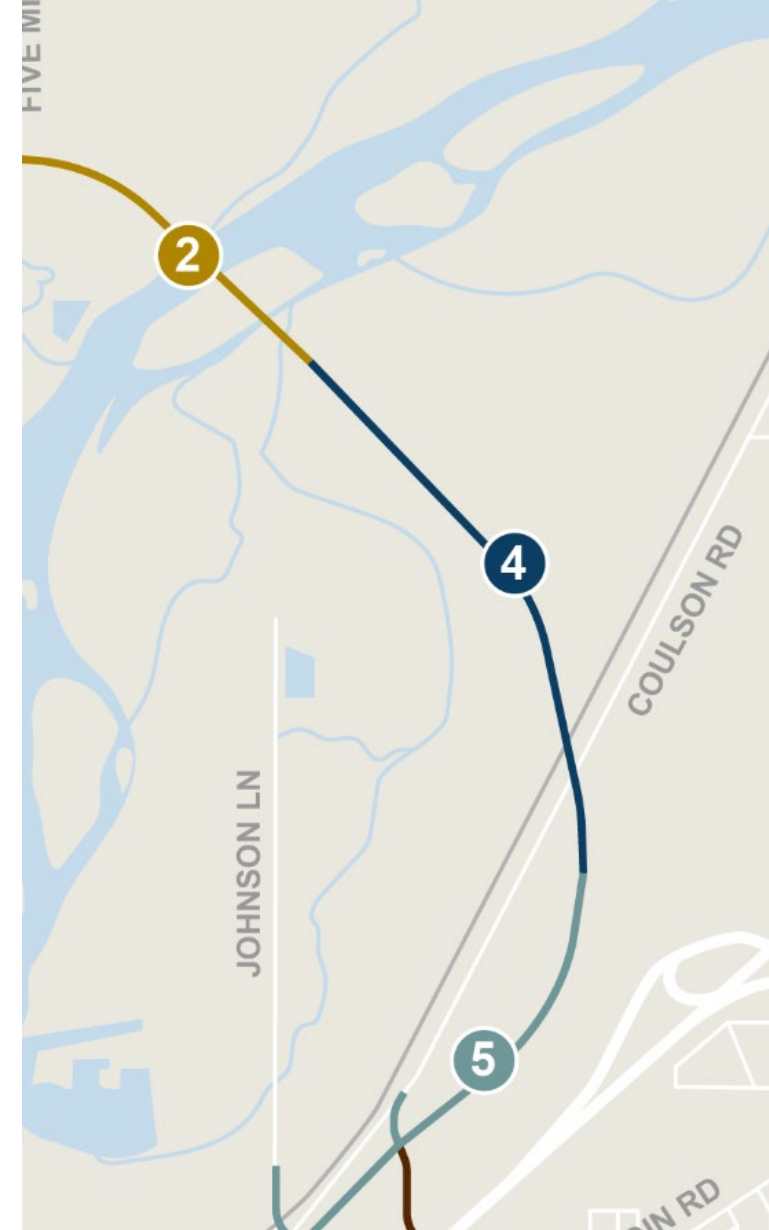
Schedule

+/- 2023 (Tentative)



Features

One bridge crossing the BNSF railroad



JOHNSON LN INTCH – RAILROAD OVERPASS



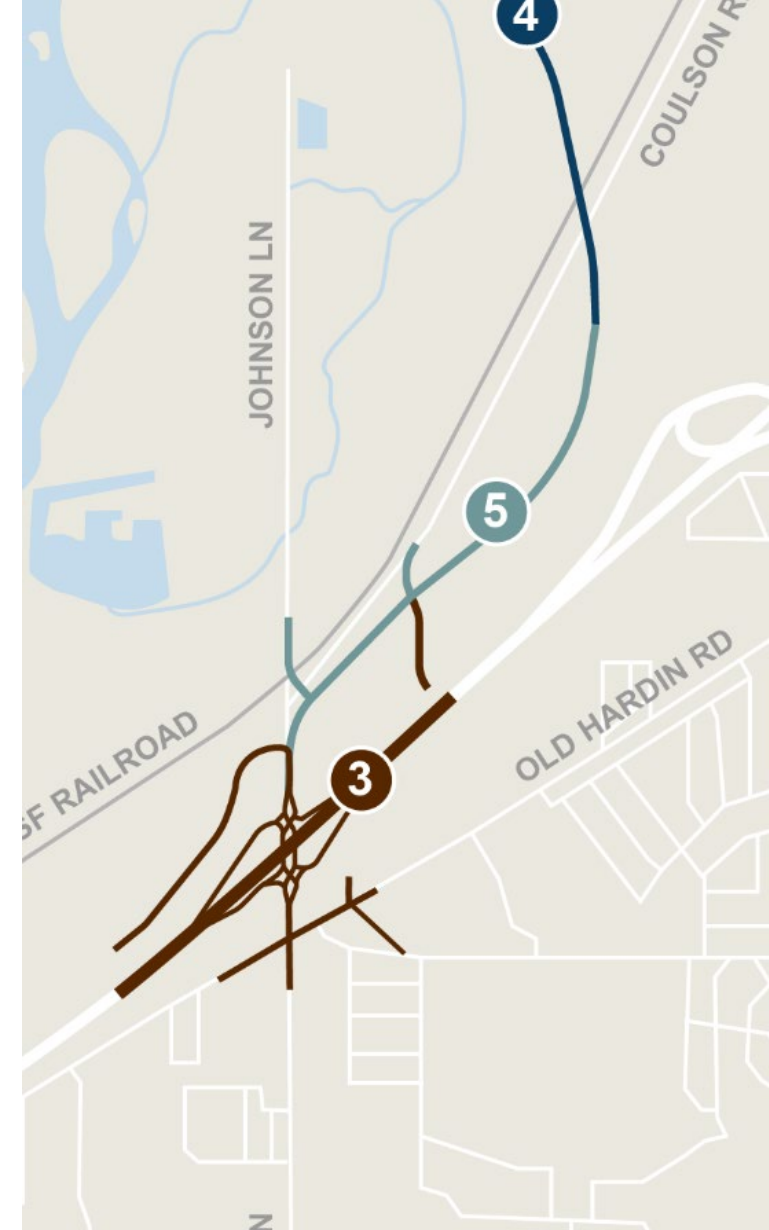
Schedule

+/- 2024 (Tentative)



Features

Arterial road connecting Johnson Lane Interchange to railroad bridge



FIVE MILE ROAD TO US 87



Schedule

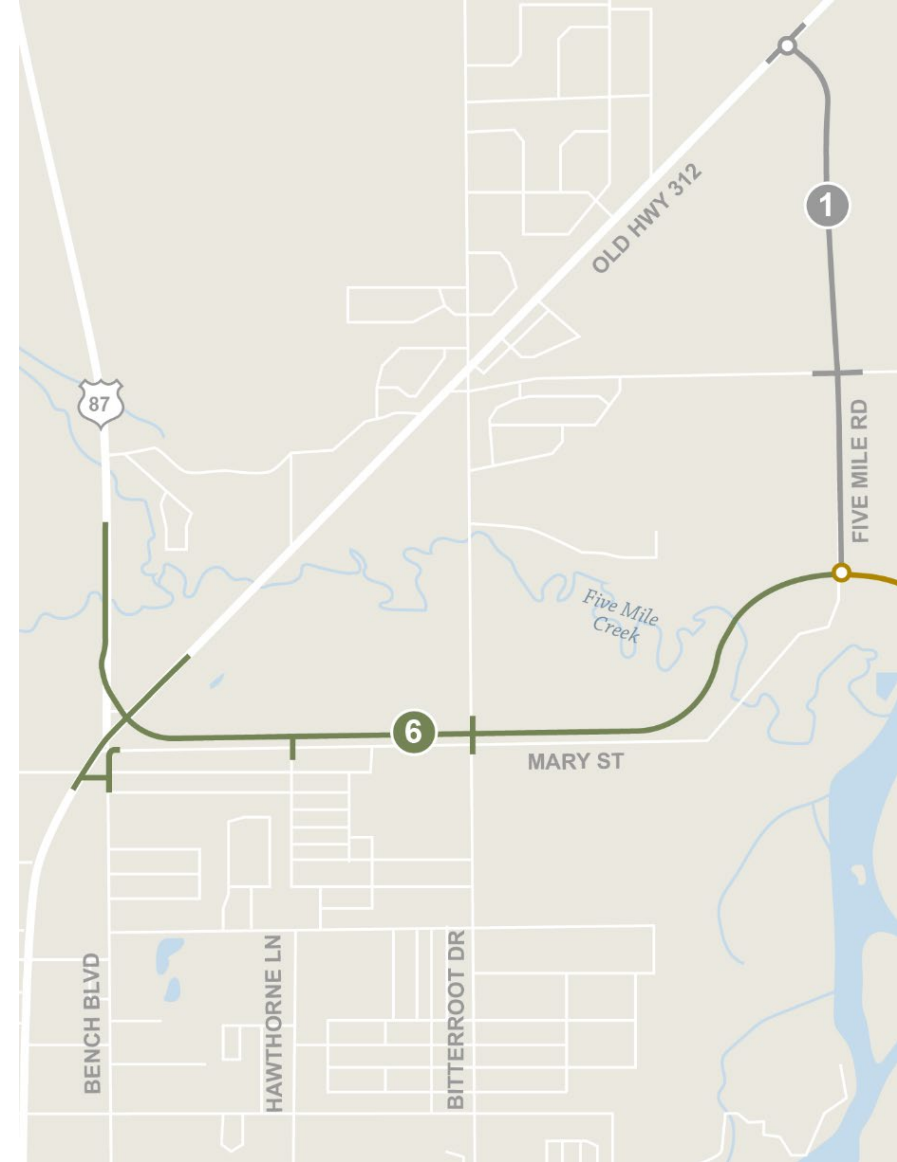
+/- 2025 (Tentative)



Features

New urban arterial north of Mary Street

Reconfigured Main Street connection



JOHNSON LANE INTERCHANGE



Project Segment Updates

Diverging Diamond Interchange (DDI)

Adjacent work:

Old Hardin Road

- Johnson Lane
- Becraft Lane
- Cole Street

Frontage Road

- Sannon Boulevard



JOHNSON LANE INTERCHANGE



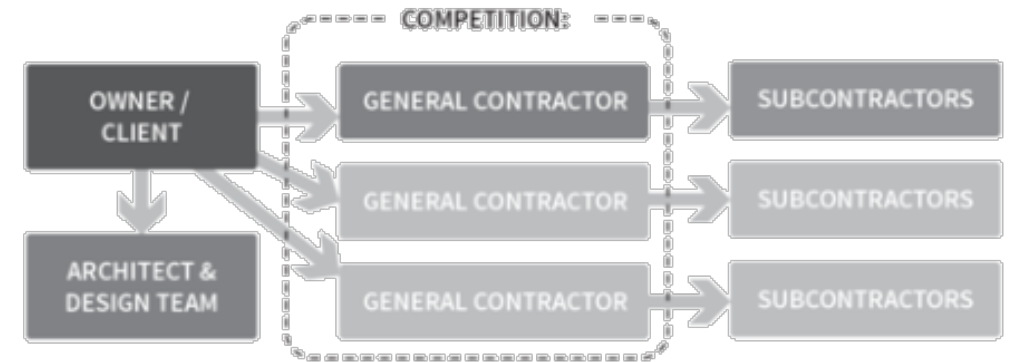
Project Segment Updates

Construction Manager/General Contractor

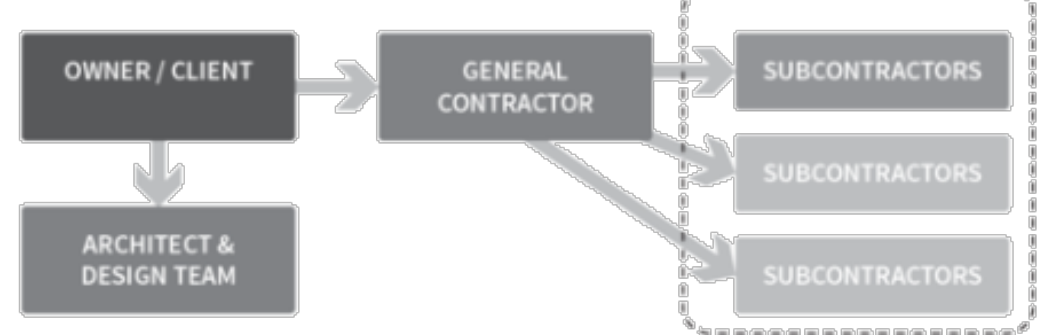
Advantages:

- ✔ Reduces Owner risk, increases Owner control
- ✔ Uses most qualified contractor
- ✔ Allows for collaboration/innovation
- ✔ More predictable schedule, speed of delivery
- ✔ Provides for cost certainty, required bids from subcontractors
- ✔ Open-book policy (ICE – Independent Cost Estimator)

DESIGN-BID-BUILD:



CONSTRUCTION MANAGER AT RISK:



Source:

www.jacksongalloway.com

JOHNSON LANE INTERCHANGE



Project Segment Updates

Traffic Analysis and Design

Environmental Review and Compliance

Road and Bridge Design

Multi-modal Accommodations

Electrical Design

Utility Design

Right-of-Way Design & Acquisition



JOHNSON LANE INTERCHANGE



Project Segment Updates

Traffic Analysis and Design

Environmental Review and Compliance

Road and Bridge Design

Multi-modal Accommodations

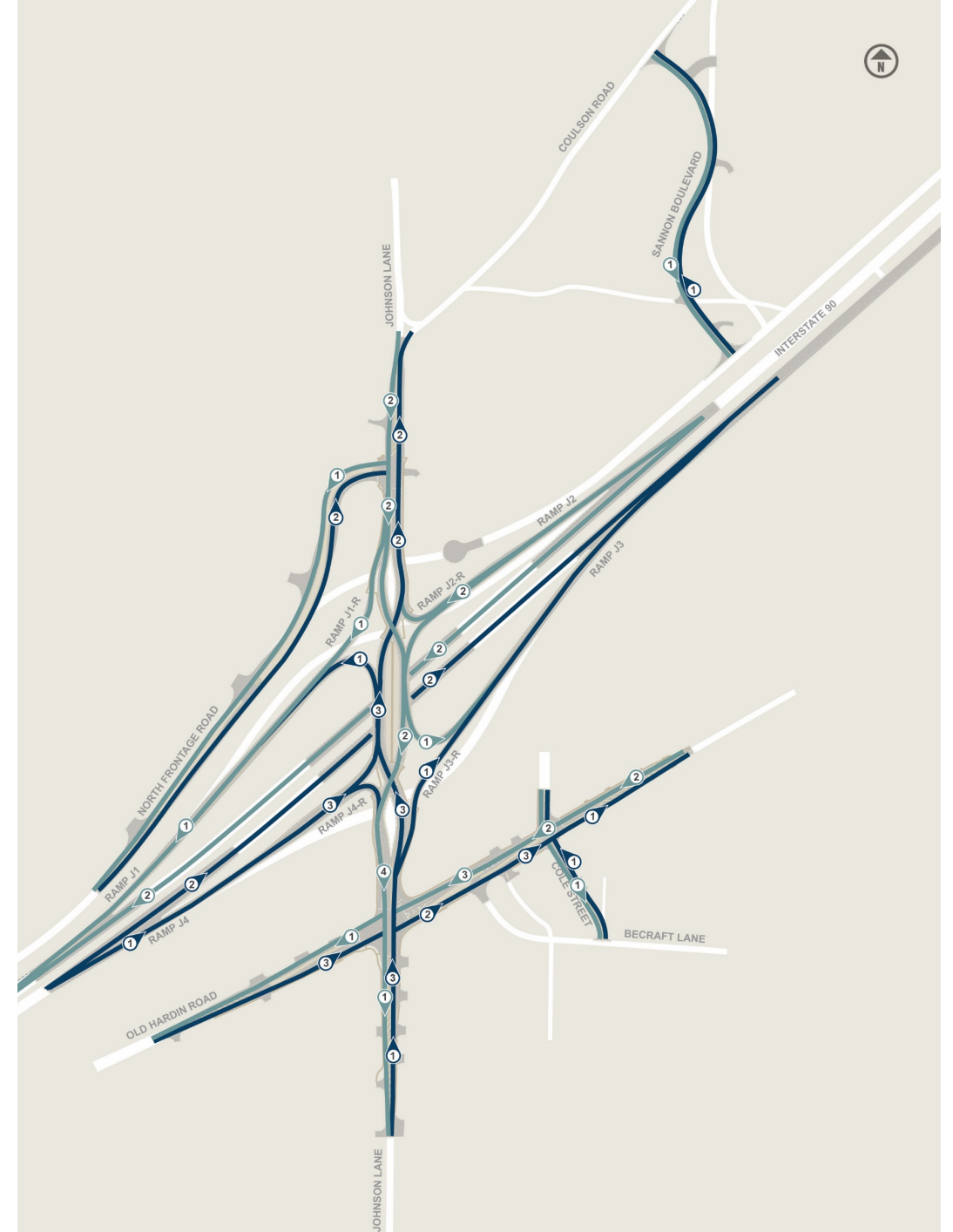
Electrical Design

Utility Design

Right-of-Way Design & Acquisition

Videos of DDI available at:

https://www.mdt.mt.gov/pubinvolve/billings_bypass/links.shtml



JOHNSON LANE INTERCHANGE



Project Segment Updates

Traffic Analysis and Design

Environmental Review and Compliance

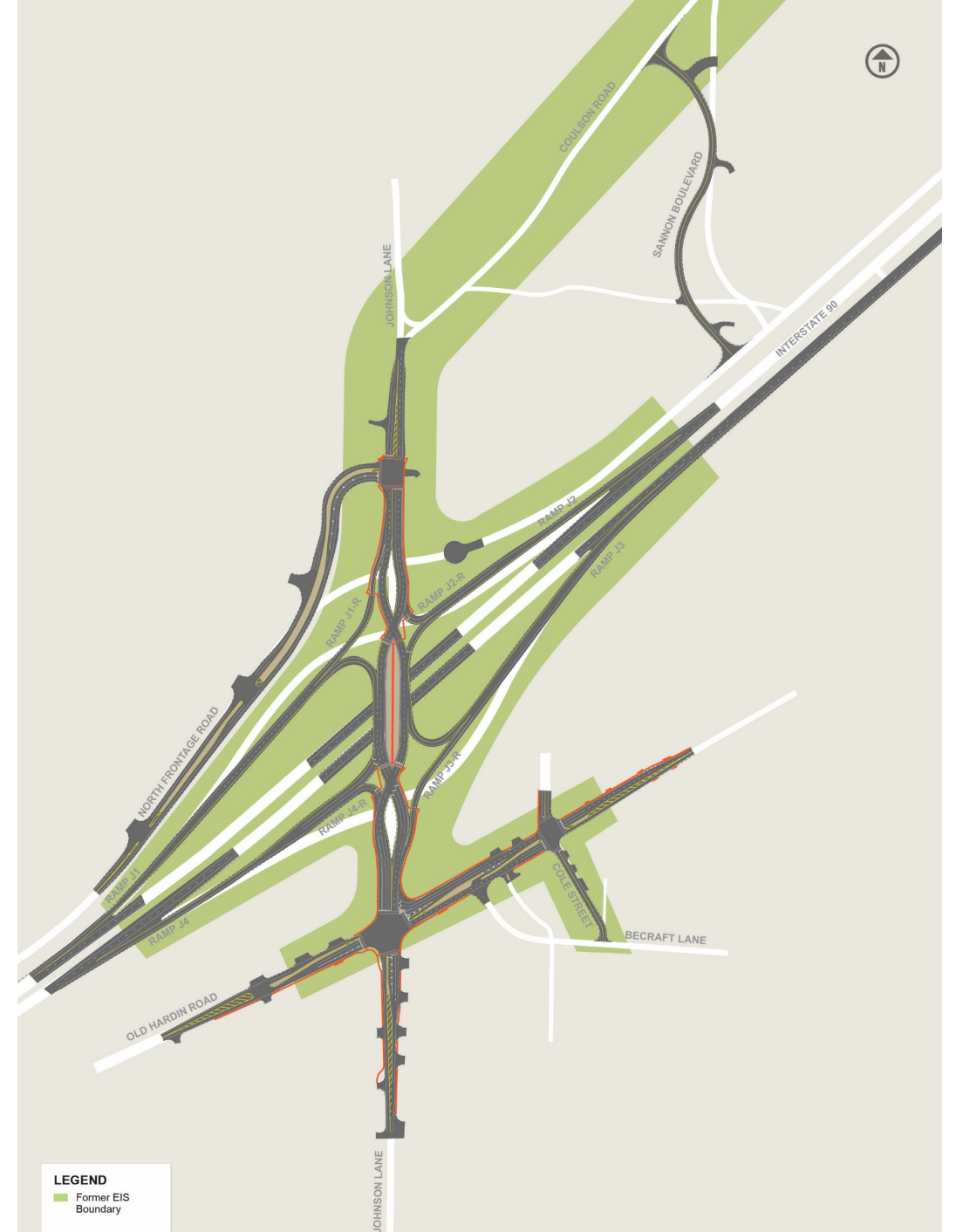
Road and Bridge Design

Multi-modal Accommodations

Electrical Design

Utility Design

Right-of-Way Design & Acquisition



JOHNSON LANE INTERCHANGE



Project Segment Updates

Traffic Analysis and Design

Environmental Review and Compliance

Road and Bridge Design

- Trucks
- Bridge Clearance
- Medians

Multi-modal Accommodations

Electrical Design

Utility Design

Right-of-Way Design & Acquisition



JOHNSON LANE INTERCHANGE



Project Segment Updates

Traffic Analysis and Design

Environmental Review and Compliance

Road and Bridge Design

Multi-modal Accommodations

- Pedestrians
- Bicycles

Electrical Design

Utility Design

Right-of-Way Design & Acquisition



JOHNSON LANE INTERCHANGE



Project Segment Updates

Traffic Analysis and Design

Environmental Review and Compliance

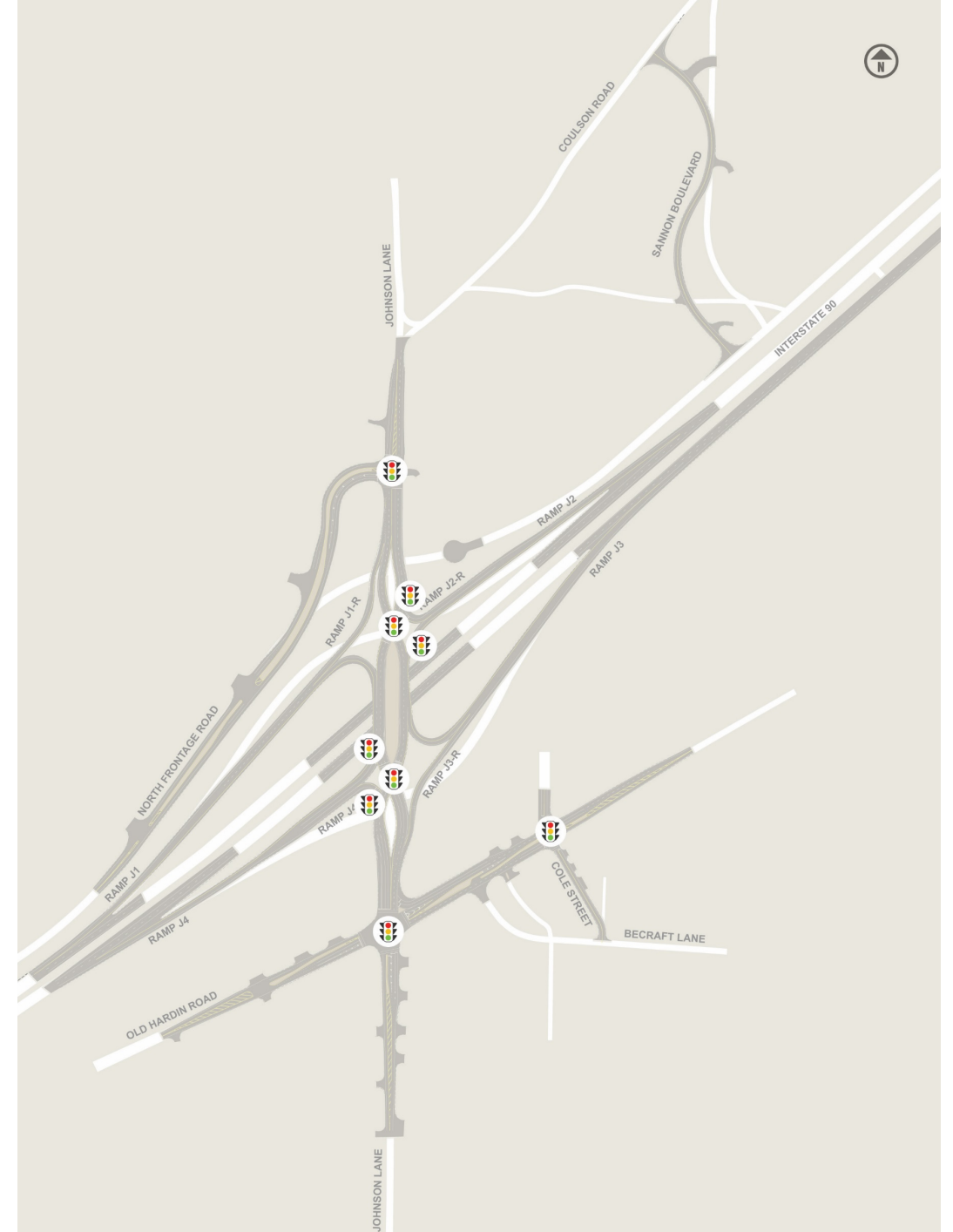
Road and Bridge Design

Multi-modal Accommodations

Electrical Design

Utility Design

Right-of-Way Design & Acquisition



JOHNSON LANE INTERCHANGE



Project Segment Updates

Traffic Analysis and Design

Environmental Review and Compliance

Road and Bridge Design

Multi-modal Accommodations

Electrical Design

Utility Design

Right-of-Way Design & Acquisition



JOHNSON LANE INTERCHANGE



Project Segment Updates

Traffic Analysis and Design

Environmental Review and Compliance

Road and Bridge Design

Multi-modal Accommodations

Electrical Design

Utility Design

Right-of-Way Design & Acquisition



**Finalize
Design**

Summer
2020

**Right-of-
Way
Acquisition**

Begin Owner
Communication:
Fall 2020

Construction

2022
(tentative)

RAILROAD OVERPASS

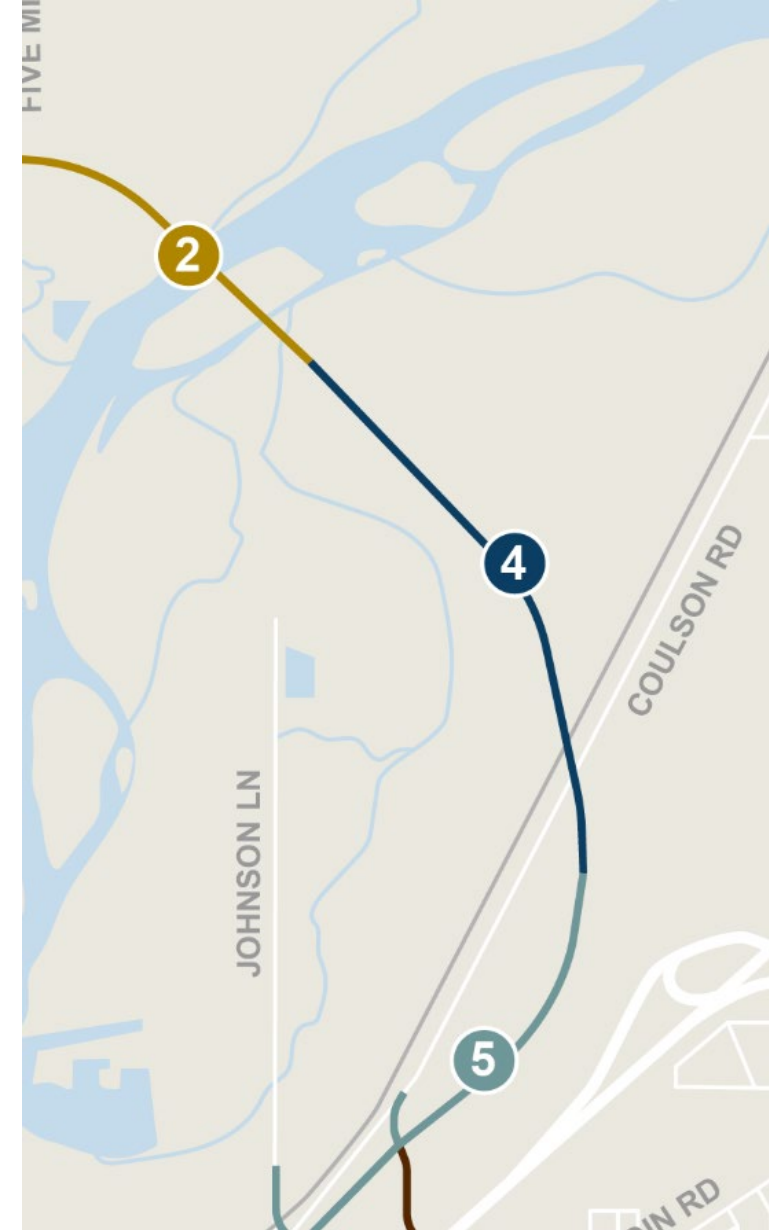


Project Segment Updates

Begins at Yellowstone River Bridge

Bridge to Span RR Tracks and Coulson Road

Temporary Connection to Coulson Road



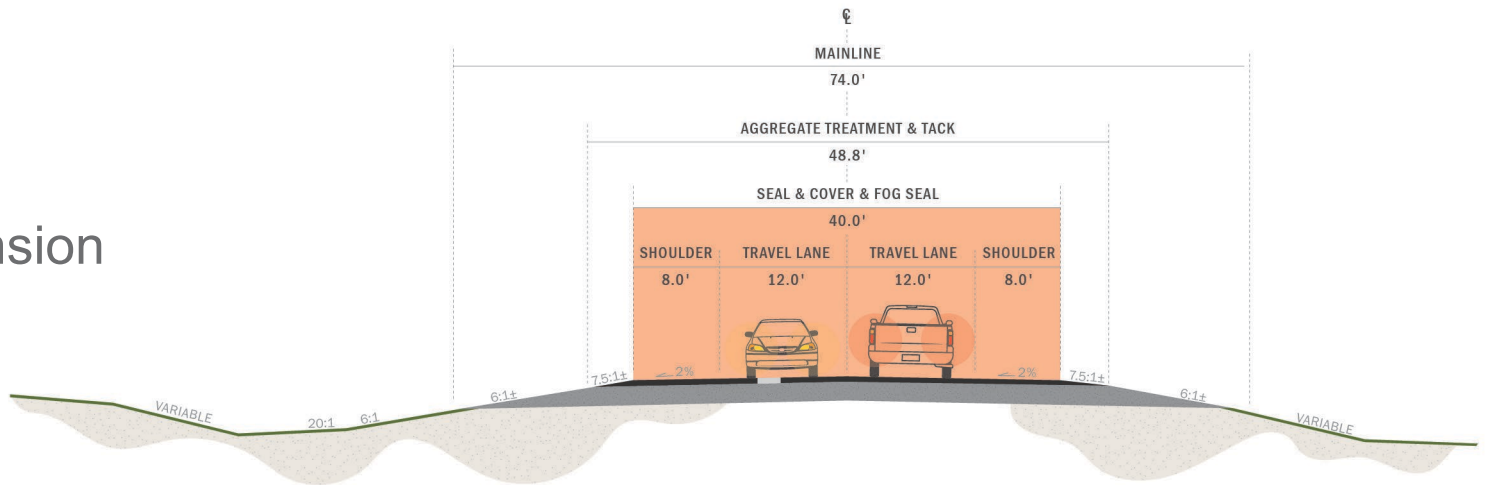
RAILROAD OVERPASS



Project Segment Updates

Road Design

- Preliminary Design
- Room for Future Expansion



LEGEND

- Current Facilities
- Future Facilities

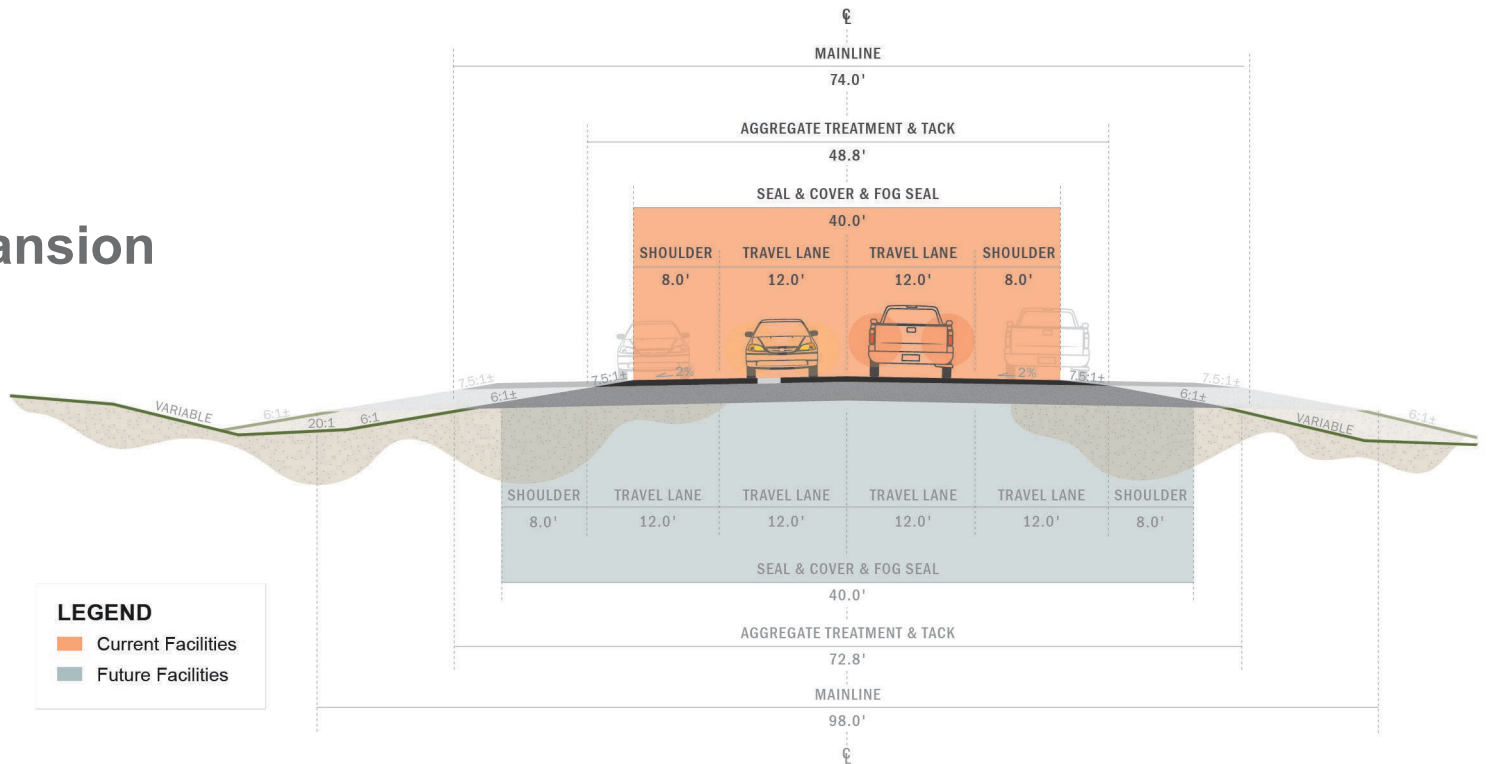
RAILROAD OVERPASS



Project Segment Updates

Road Design

- Preliminary Design
- Room for Future Expansion



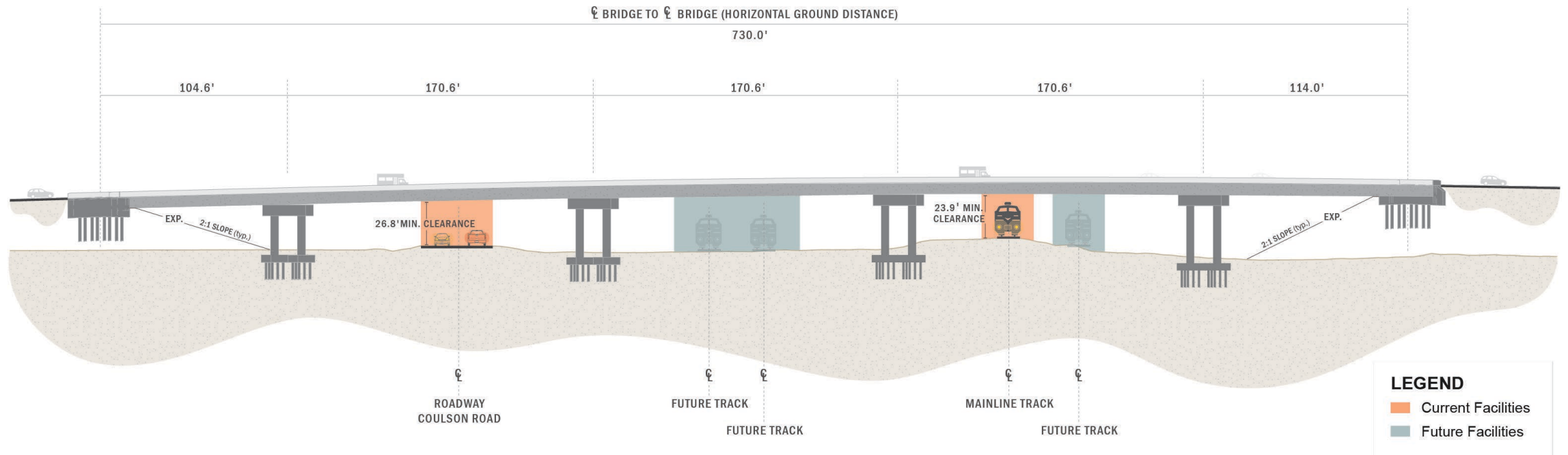
RAILROAD OVERPASS



Project Segment Updates

Bridge Design

- Railroad Expansion
- Expandable Single Structure



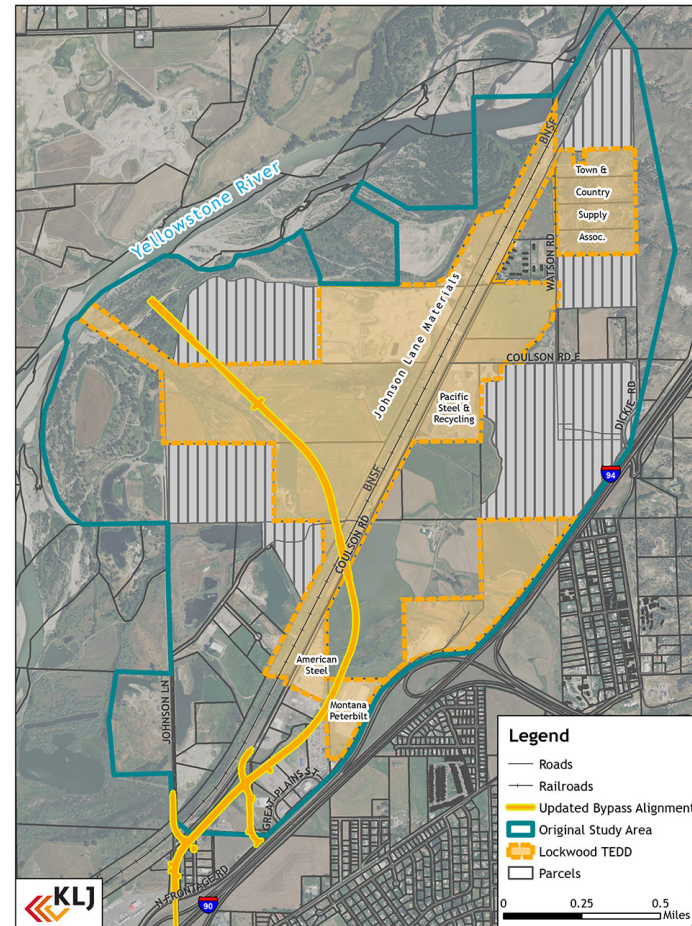
RAILROAD OVERPASS



Project Segment Updates

Coordination with TEDD

Future Infrastructure Needs



The cover features the 'BIG SKY ECONOMIC DEVELOPMENT' logo and the 'YELLOWSTONE COUNTY MONTANA' seal. The title 'Lockwood TEDD INFRASTRUCTURE MASTER PLAN' is prominently displayed, with a submission date of 'Submitted: 10/9/2017'. The Morrison Maierle logo is at the bottom left, and the KLJ logo is at the bottom right. The background is an aerial photograph of the Lockwood area.

ADDITIONAL INFORMATION



[www.mdt.mt.gov/
pubinvolve/billingsbypass](http://www.mdt.mt.gov/pubinvolve/billingsbypass)



billingsbypass@dowl.com



406.294.9668



222 North 32nd #700
Billings, MT 59101



Renderings by NC3D