



Missoula County
South Avenue Bridge Project

Subject:	Missoula County Community and Planning Services Department Bicycle/Pedestrian Stakeholder Meeting	Meeting Location:	Missoula County CAPS Office 323 W. Alder Street Missoula, Montana
Meeting Date:	January 17, 2017; 9:00 AM (Mountain)	Conference Call Information	Call-in: n/a Code: n/a

Attendees (please sign attendance list):

Meeting Purpose:

Conduct project informational meeting to discuss the project status, present recommended project elements and provide overview on the basis for the recommended project.

Section 1 - Introductions and Committee Purpose
1.1 Formal Introductions 1.2 Purpose of Meeting
Section 2 - Agenda
2.1 Project Status and Environmental Document Status 2.2 Recommended Project 2.3 Alignment and Bridge Type Alternatives Evaluated 2.4 Bridge Typical Section alternatives Evaluated 2.5 Basis of Recommended Bridge Typical Section 2.6 Next Steps <ul style="list-style-type: none"> • Conduct Final TDC Meeting (traffic calming, aesthetics) • Address Agency Comments on Environmental Document • Conduct Final Public Informational Meeting

Attachments:

- Presentation .ppt
- Figures



South Avenue Bridge

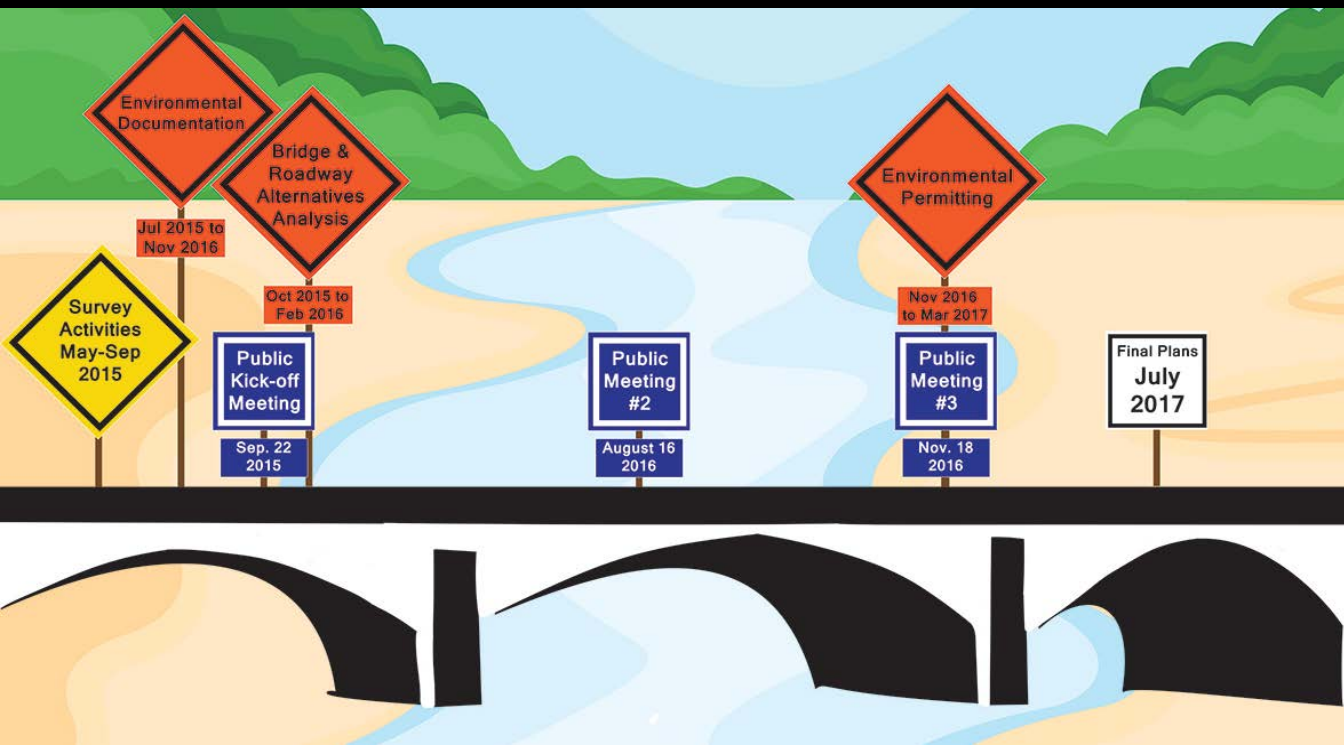
CAPS Informational Meeting
January 17, 2017



Agenda

- Introductions
- Project update
- Overview of Alternatives
Evaluated
- Overview of Recommended
Project
- Update on Environmental Process



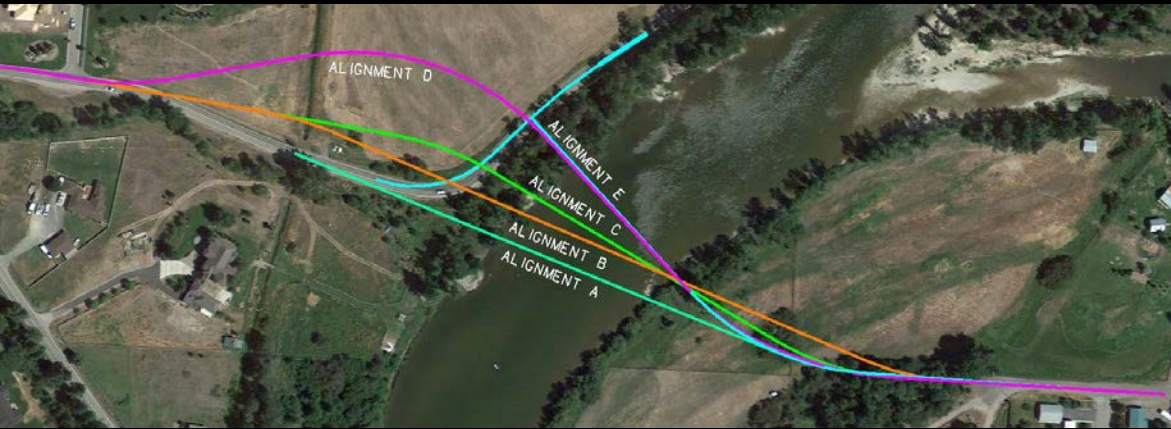


Project Schedule

As of August 2016

- Field surveys completed
- Bridge Type, Size, and Location Study drafted and under review
- Preliminary roadway alignment complete and under review
- Hydraulics report drafted and under review
- DFIRM mapping discrepancies discovered during hydraulic analysis (delayed project, back on-schedule)
- Environmental review ongoing

Alignment Development



Alignments Carried Forward



Alignment 1



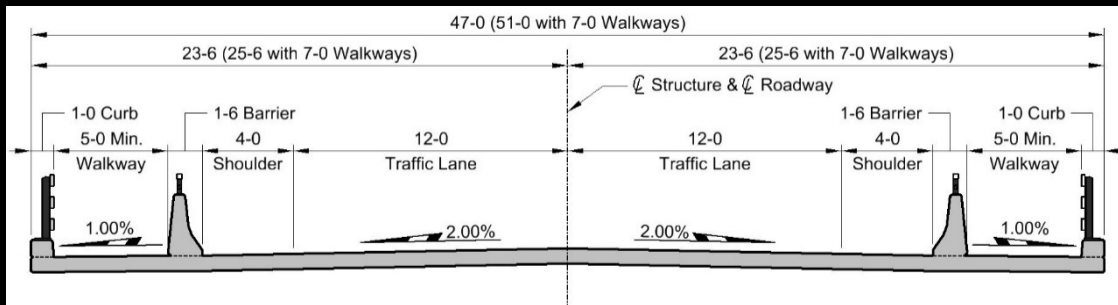
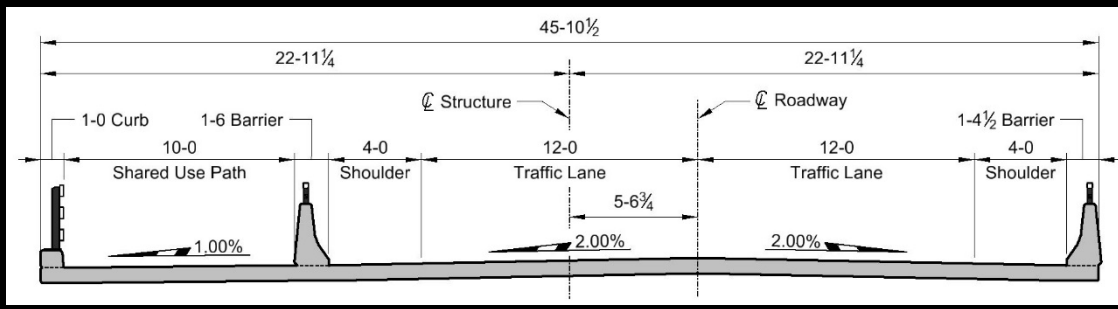
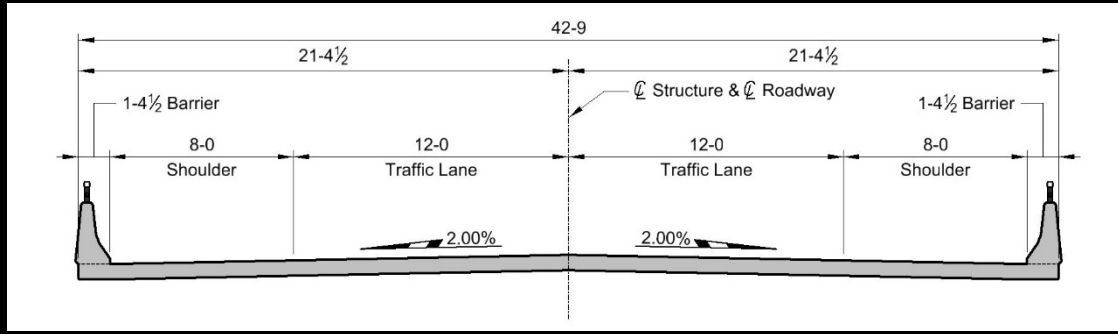
Alignment 2

- Multiple potential alignments considered
- Alignments refined/eliminated based on:
 - Design criteria
 - Environmental impacts (avoidance of O'Brien Creek)
 - Right-of-way
 - Overall costs
 - Bridge length
 - Safety
- Alignments B and C carried forward (becoming Alignments 1 and 2, respectively)

Alignment Carried Forward



Bridge Typical Sections & Walkway Options Considered

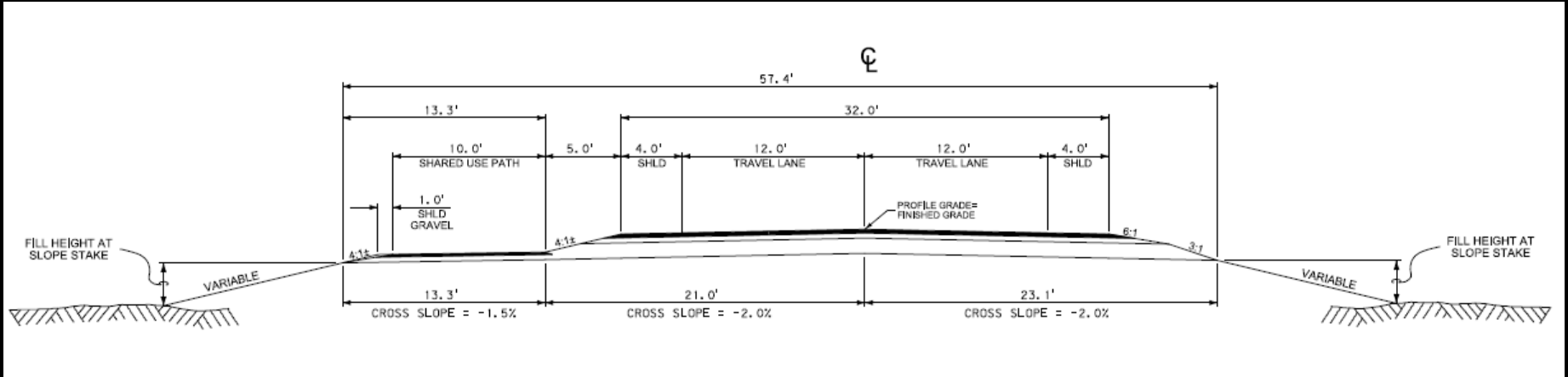


- No dedicated walkways. Increased shoulder widths
- 12-ft lanes, 8-ft shoulders

- Shared-use path for bikes and pedestrians on one side only
- 12-ft lanes and 4-ft shoulders

- Separated walkways on either side. Bikes use the shoulders
- 12-ft lanes, 4-ft shoulders

South Avenue Roadway Typical Section



Proposed Bridged Design



Arched girder profile and wall piers

Environmental Documentation and Process

Environmental documentation has been conducted in tandem with design process and submitted to MDT/FHWA for review.

Major NEPA/MEPA analyses include:

- Cultural Resources
- Hydraulic and Hydrology Evaluation (floodplains)
- Biological Resource Report / Biological Assessment
- Noise Analysis
- Section 4(f) Evaluation
- Environmental Document (Categorical Exclusion, narrative format)



Next Steps

- Conduct next TDC meeting to discuss traffic calming, aesthetics, etc.
- Address agency comments on environmental document
- Final public meeting anticipated in February

200 West Broadway Street
Missoula, Montana 59802-4292



**Parks, Trails
& Open Lands**

MISSOULA COUNTY 

South Avenue Bridge Project Update with HDR & County Public Works

January 17, 2017 / 9:00 – 10:00 AM / 323 West Alder, 2nd Floor

Please Sign In

Name / Organization

Contact Info (phone and/or email)

Hillary Ogg / RunWild Missoula	370-0137 / hillaryo@runwildmissoula.org
Julia Schechter / BWAM	614-738-5610 juliaschechter22@gmail.com
Eric Dickson / Missoula County	258-3772 / edickson@missoulacounty.us
Mike Kerkviss / MIBA	519-6689
Ginny Sullivan Adventure Cycling	406-532-2769 gsullivan@adventurecycling.org
Jean Belangie-Nye LRTA/BTPA	273-0213 / jnwonyeimage.com
Dustin Hirose HDR	532-2206 dustin.hirose@hinc.com
Dan Haman	" 532-2207 danhaman@hinc.com